

VERTICAL SEISMIC PROFILE

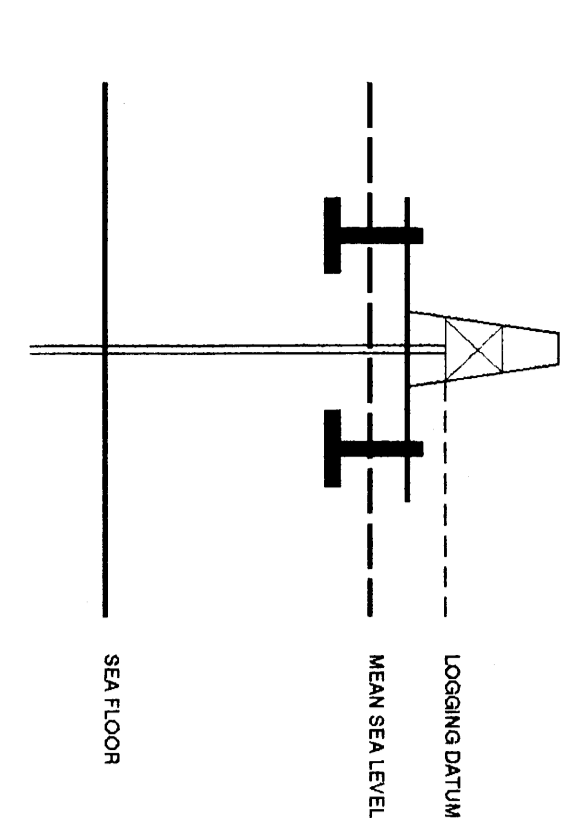
ZERO OFFSET VSP
WASHSHAPING AND CORRIDOR STACK

PLOT 5

Company: ESSO AUSTRALIA LTD.
 Well: BLACKBACK #3
 Field: BLACKBACK
 Country: AUSTRALIA
 Reference No: SVJ261011561012 Interval: 3100.00 to 5000.00
 Date Logged: 05-APR-1994 Date Processed: 12-APR-1994
 Location: 028 311 34.84' S 148 31' 05.50" E
 Elevations: NS: 25.00 DF: 24.70 QI: -318.00
 Permanent Datum: MSL Depth Units: METRES
 FIELD RECORDING: Engineer: S. MANNING Location: VLA Program Version: 600-603
 CORPORATION: Analyst: A. WILSONG Operator: SVJ Borehole: 513

ELEVATION ABOVE MEAN SEA LEVEL

Logging Datum: 25.00
 Seismic Reference Datum: 0100



Total Number of Levels: 37
 Depth Reference: SRD

Time Reference	Raw	Total	Br. Size	Chasing Size	Top	Bottom
	Time	Time	Depth	Depth	Open	Open
1	01-04-84	01-04-84	3 1/2 IN	2 7/8 IN	2752 M	3007 M
1	01-04-84	01-04-84	3 1/2 IN	2 7/8 IN	2752 M	3007 M
1	01-04-84	01-04-84	3 1/2 IN	2 7/8 IN	2752 M	3007 M

HEADINGS

The well name, location and coordinate reference data were furnished by the customer.
 All interpretations are opinions based on inferences from electrical or other measurements and we cannot, and do not guarantee the accuracy or completeness of any interpretations, and we shall not, except in the case of well negligence on our part, be liable or responsible for any loss, costs, damages or expenses incurred or sustained by anyone resulting from any interpretation made by any of our officers, agents or employees. These interpretations are also subject to Clause 4 of our General Terms and Conditions as set out in our current Price Schedule.

*** CORRIDOR STACK + AGC ***
 AGC WINDOW : 250 MS
 POLARITY (S.E.G.) : REVERSE

**** WAVESHAPING ****
 WAVESHAPING DECONVOLUTION
 ZERO PHASE
 ENHANCED UPDIPING WAVEFIELD
 PROCESSING SEQUENCE:

MEDIAN STACK APPLIED
 FILTER BAND : 0 HZ - 7.87 HZ
 BAND PASS FILTER : 5-65 HZ
 NORMALIZATION GATE : 7/70-1100 MS
 TIME VARYING GAIN : 7/70-1100 MS
 DOWNGOING WAVEFIELD SUBTRACTION
 WAVESHAPING DECONVOLUTION
 OPERATOR LENGTH : 1.00 S
 PREWITTING : 2 %
 5 LEVEL ENHANCED UPDIPING WAVEFIELD

CORRIDOR STACK
 CORRIDOR WINDOW : 250 MS
 POLARITY (S.E.G.) : REVERSE

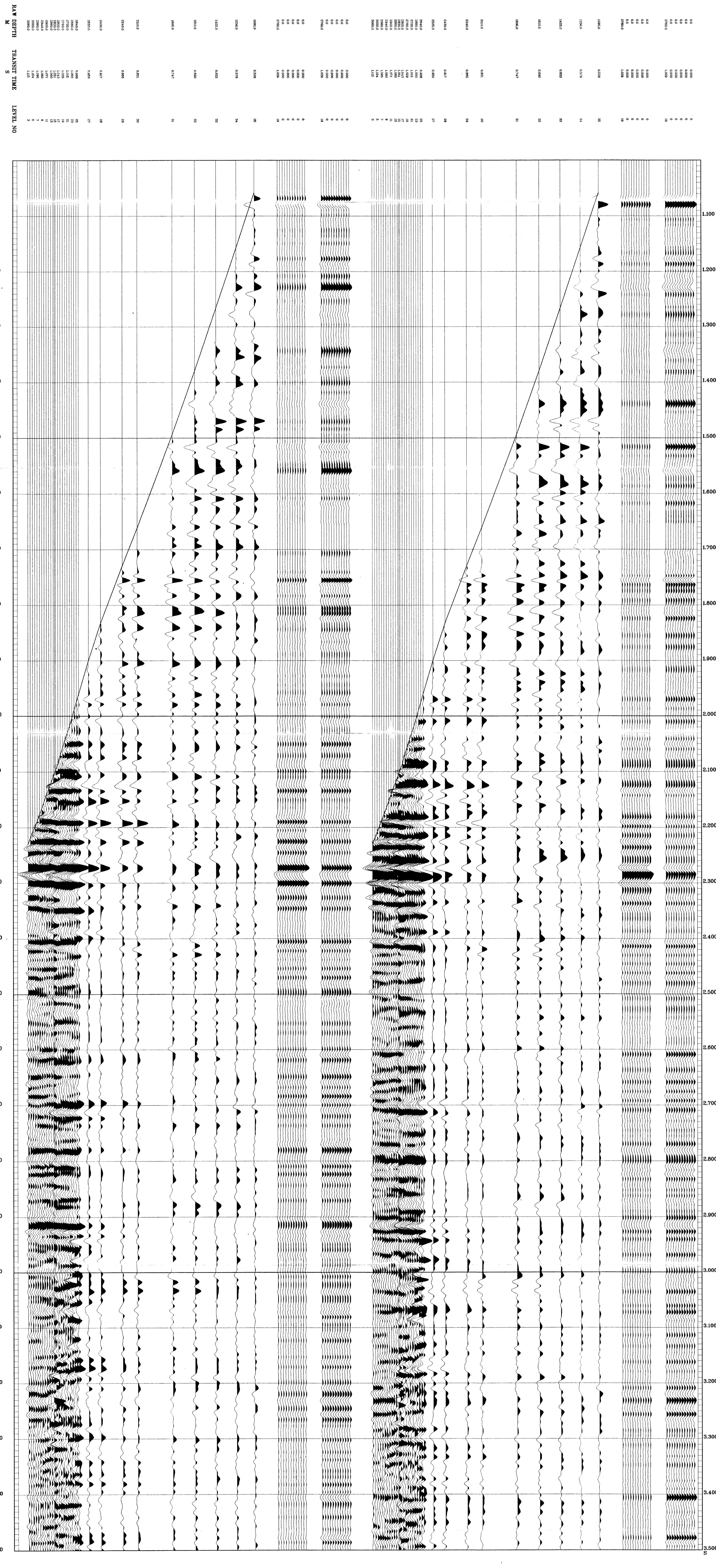
*** CORRIDOR STACK + AGC ***
 AGC WINDOW : 250 MS
 POLARITY (S.E.G.) : NORMAL

*** CORRIDOR STACK ***
 CORRIDOR WINDOW : 250 MS
 POLARITY (S.E.G.) : NORMAL

**** WAVESHAPING ****
 WAVESHAPING DECONVOLUTION
 ZERO PHASE
 ENHANCED UPDIPING WAVEFIELD
 PROCESSING SEQUENCE:

MEDIAN STACK APPLIED
 FILTER BAND : 0 HZ - 7.87 HZ
 BAND PASS FILTER : 5-65 HZ
 NORMALIZATION GATE : 7/70-1100 MS
 TIME VARYING GAIN : 7/70-1100 MS
 DOWNGOING WAVEFIELD SUBTRACTION
 WAVESHAPING DECONVOLUTION
 OPERATOR LENGTH : 1.00 S
 PREWITTING : 2 %
 5 LEVEL ENHANCED UPDIPING WAVEFIELD

VERTICAL SCALE
 POLARITY (S.E.G.) : 40 CM/SEC
 NORMAL



COMPANY ESSO AUSTRALIA LTD.
 FIELD BLACKBACK
 WELL BLACKBACK #3
 COUNTRY AUSTRALIA

