

Plate 3: 3220 m (Latrobe Group)

Reflected Light

Exinite (brown) is much more abundant than vitrinite (grey) in this coal fragment.

Field Dimensions: 0.26 x 0.18 mm.

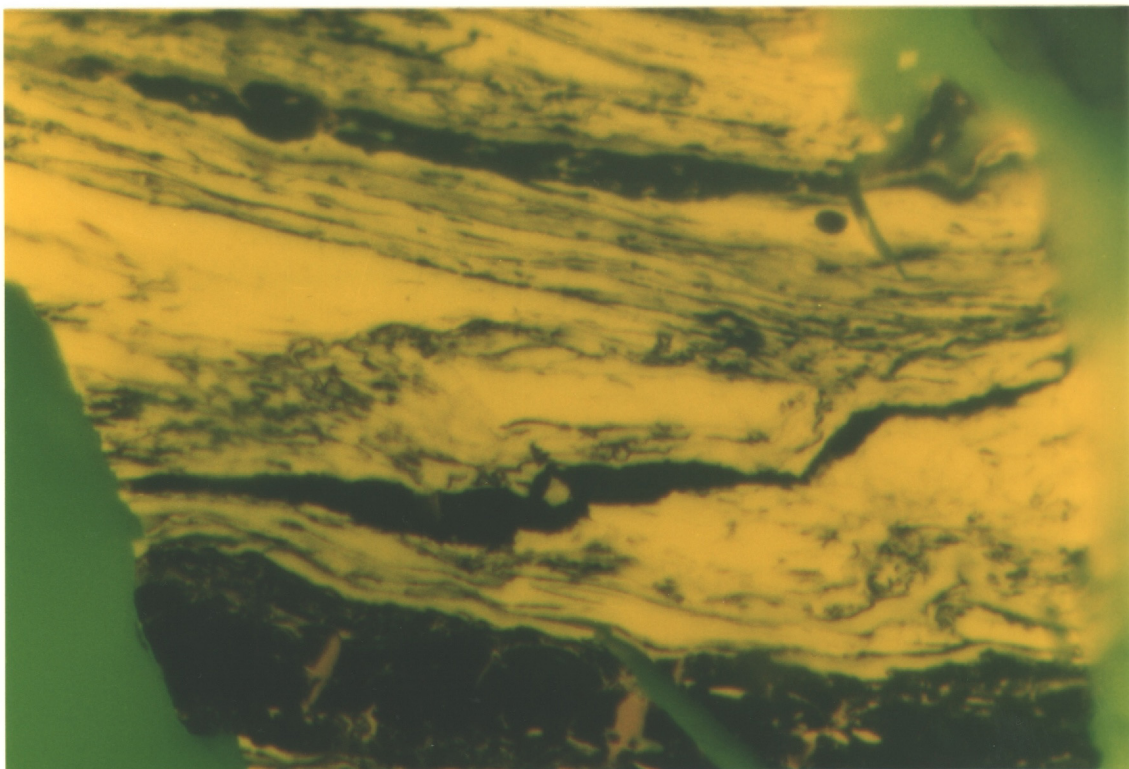


Plate 4: Same Field as above.

Reflected Light

Exinite in this field consists almost entirely of resinite. Exsudatinite (bottom; veins in vitrinite) is common.