

Schlumberger

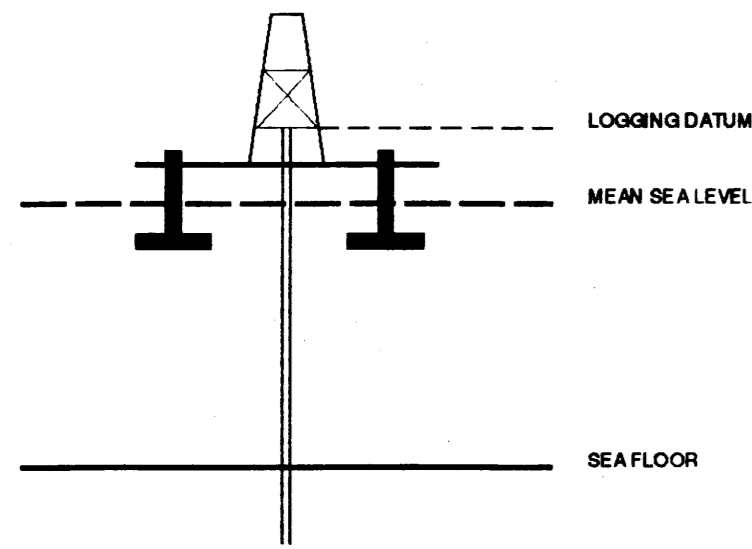
SYDNEY LOG  
INTERPRETATION  
CENTRE

# SEISMIC CALIBRATION LOG

(Adjusted Continuous Velocity Log)



Company: BHP PETROLEUM  
Well: AMBERJACK #1  
Field: WILDCAT  
Country: AUSTRALIA  
Reference No: 56592 Interval: 1727.00 to 203.00  
Date Logged: 14-MAY-90 Date Processed: 21/5/90  
Location: 28 29'33.44" SS 147 18'55.05" EE  
Elevations: KB: 21.00 DF: 20.70 GL: -37.00  
Permanent Datum: MSL Depth Units: METRES  
FIELD RECORDING: Engineer: R. CRIST Location: Program Version: 32.2  
COMPUTATION: Analyst: Z.KATELIS Centre: SYJ Baseline: 18.1  
ELEVATION ABOVE MEAN SEA LEVEL  
Logging Datum: 21.00  
Seismic Reference Datum: 0.00



Total Number of Levels: 23  
Depth Reference: SRD  
Time Reference: SRD

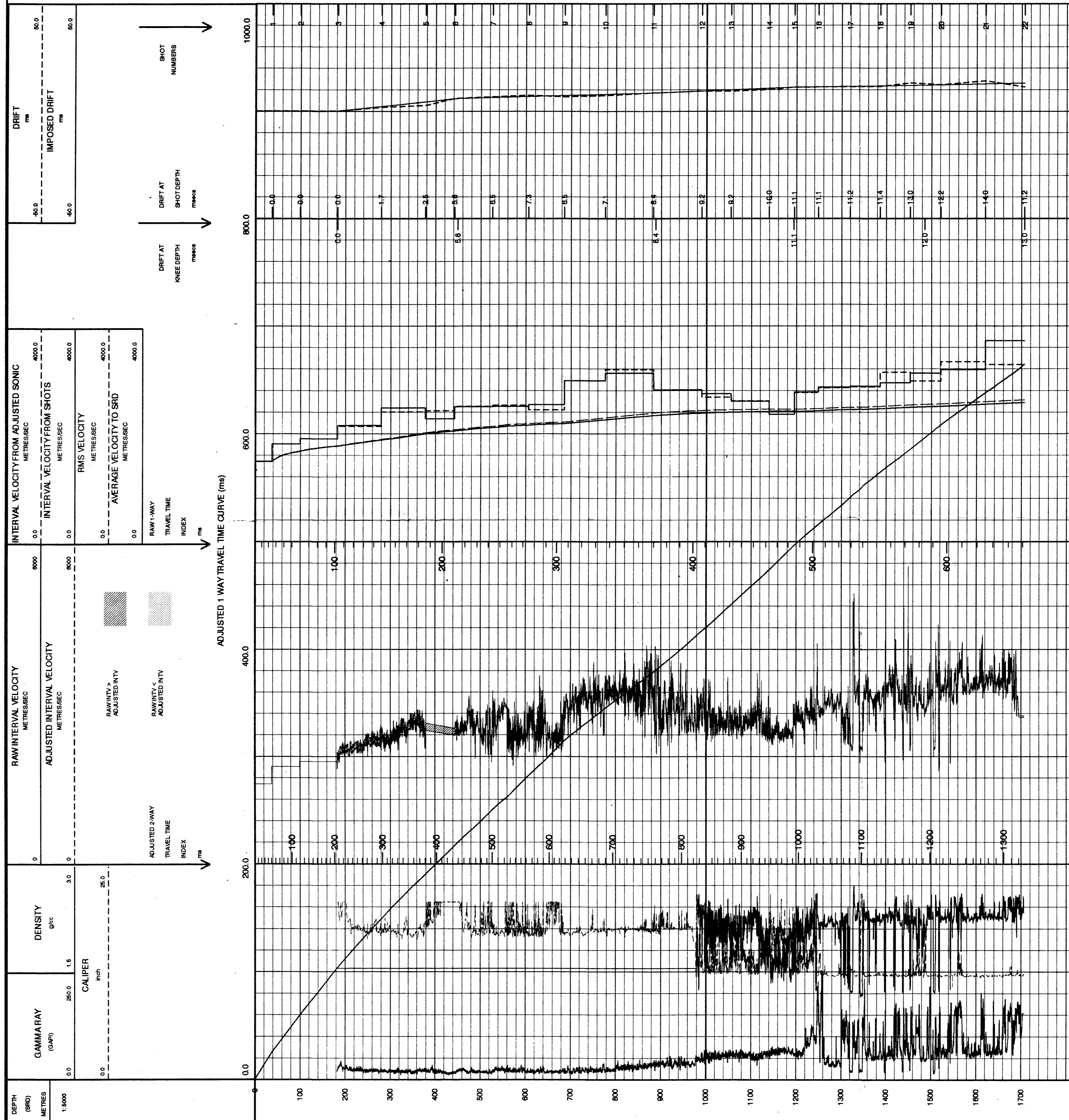
Run	Date	Tool Type	Bit Size/Depth	Casing Size/Depth	Top Depth	Bottom Depth
1,2	7-5-90	SDT	12 1/2"	13 3/8"	203.0 M	1727.0 M

VSP Run	Date	Gun Offset	Hydro Offset	Gun Elevation	Hydro Elevation	Gun Azimuth	Hydro Azimuth
1	14/5/90	40 M	40 M	4 M BELOWMSL	9 M BELOWMSL		

The well name, location and borehole reference data was furnished by the customer.

All interpretations are optional based on information from electrical or other measurements and we cannot, and do not guarantee the accuracy or correctness of any interpretations, and we shall not, except in the case of gross or willful negligence on our part be liable or responsible for any loss, costs, damages or expense, incurred or sustained by anyone resulting from any interpretations made by any of our officers, agents or employees. These interpretations are subject to Clause 4 of our General Terms and Conditions as set out in our Confidentiality Schedule.



FOLD HERE

COMPANY BHP PETROLEUM  
FIELD WILDCAT  
WELL AMBERJACK #1  
COUNTRY AUSTRALIA

