

Figure 3.10.2-a: 2D view of fault model

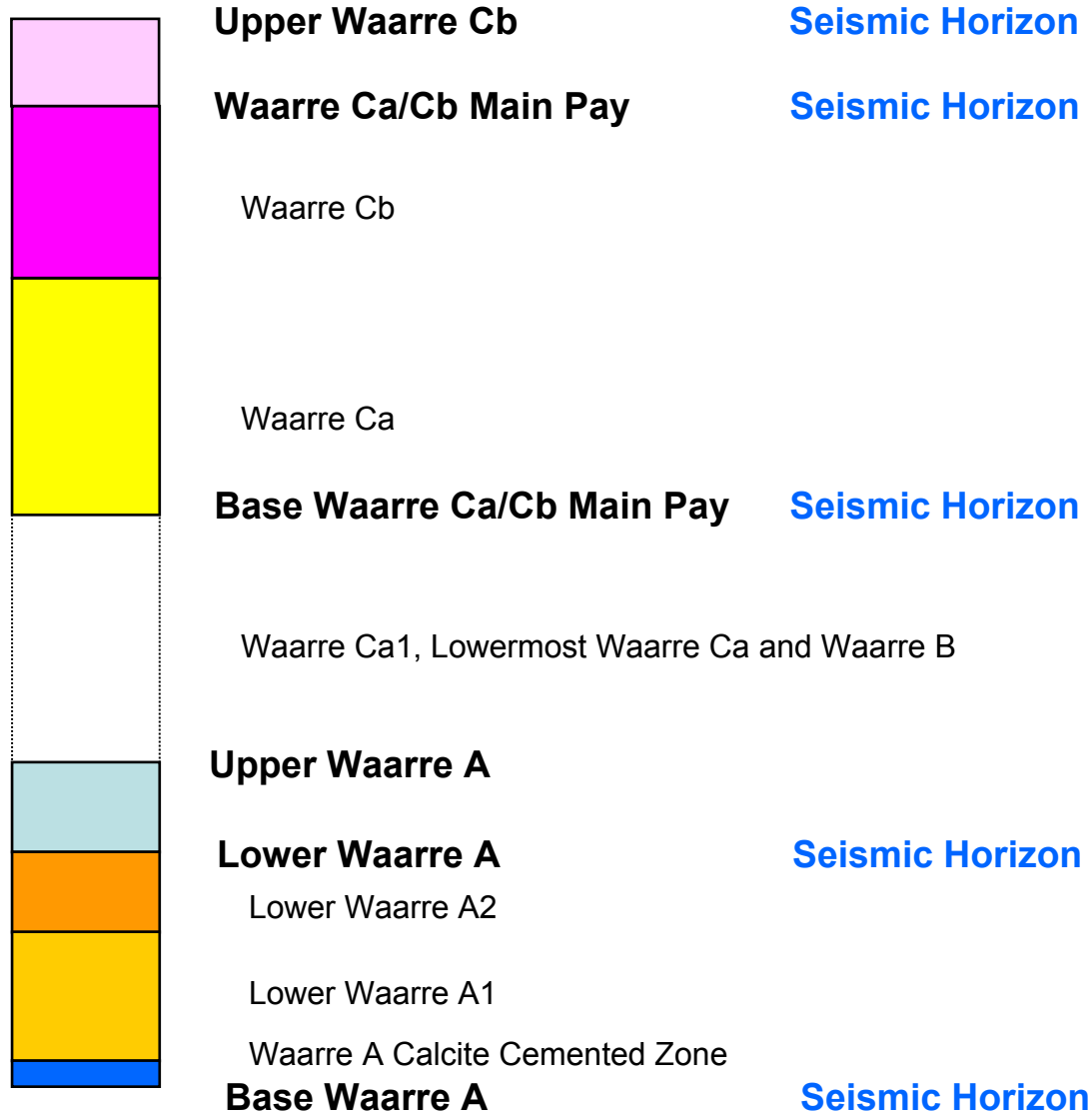


Figure 3.10.2-b: Seismic Picks

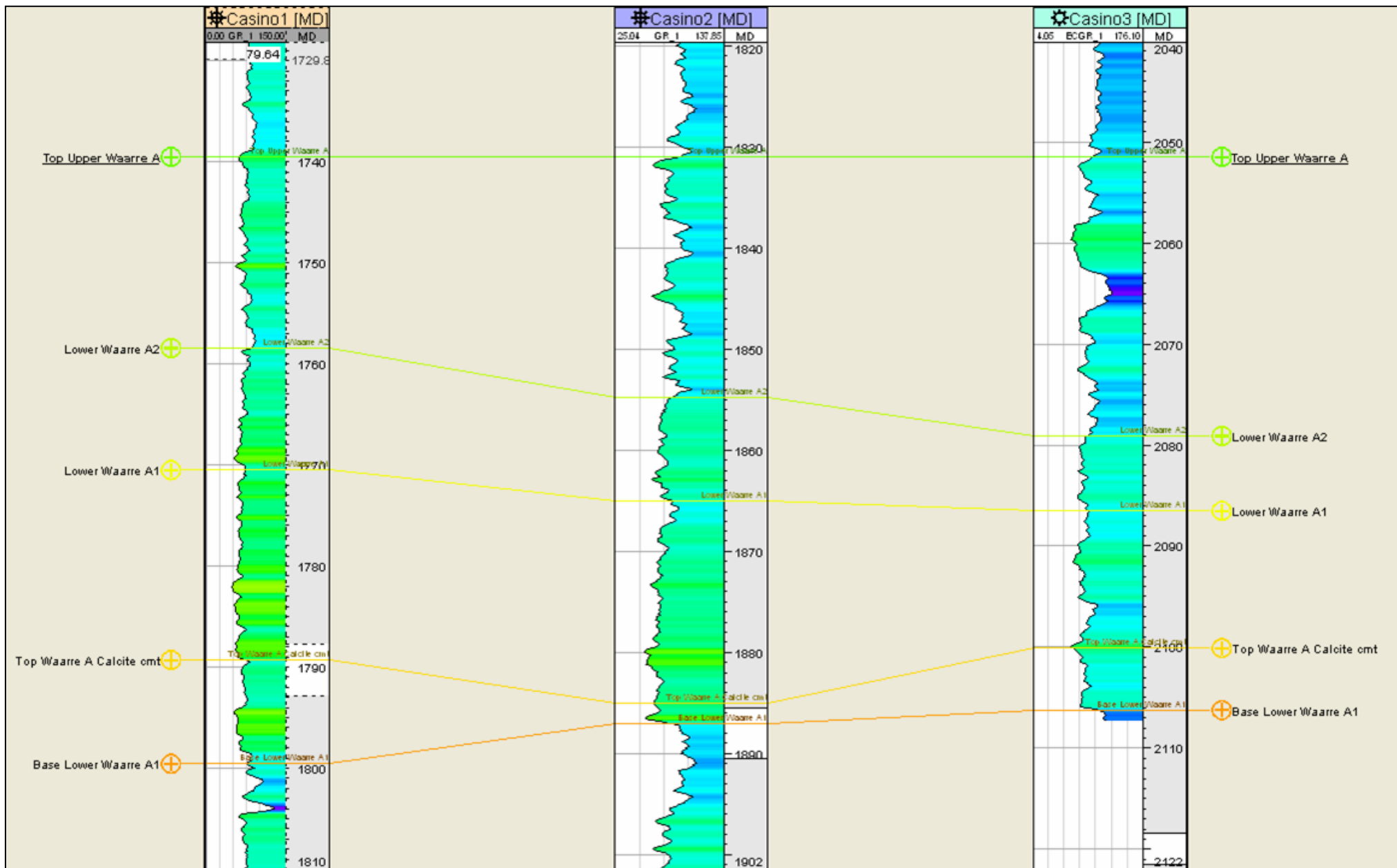


Figure 3.10.3-a: Waarre A reservoir sub-division

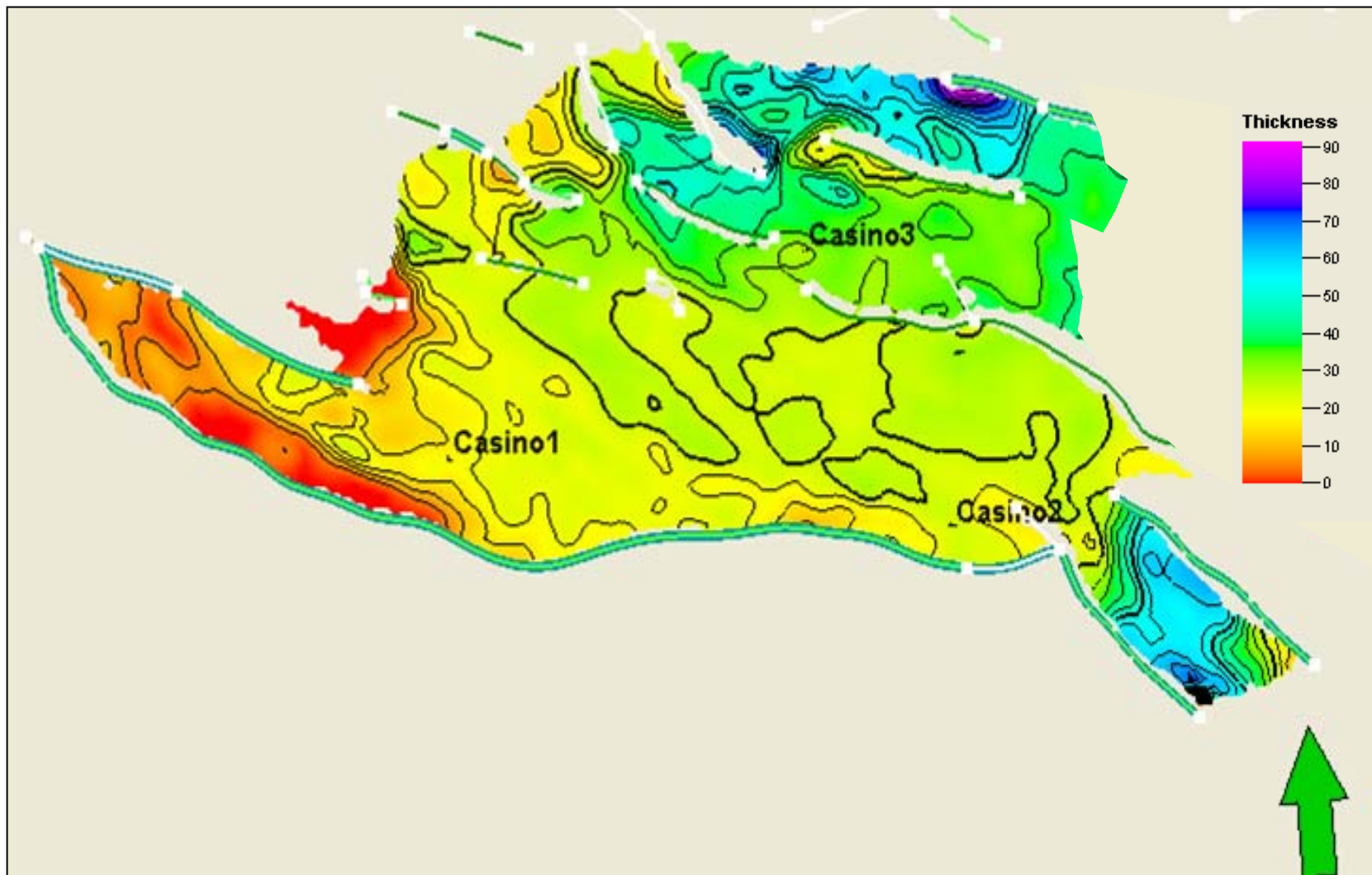


Figure 3.10.3-b: Upper Waarre A isopach

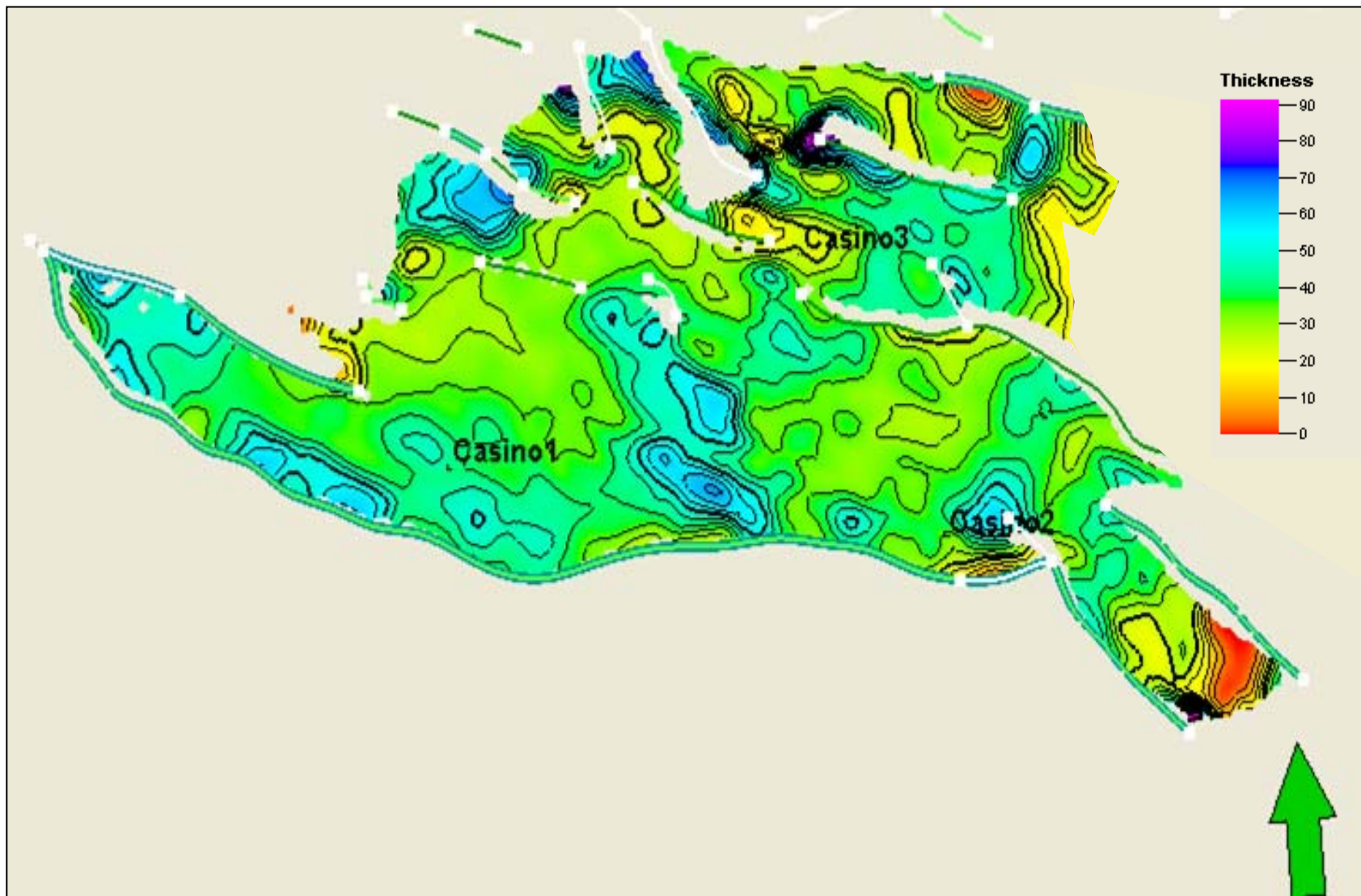


Figure 3.10.3-c: Lower Waarre A isopach

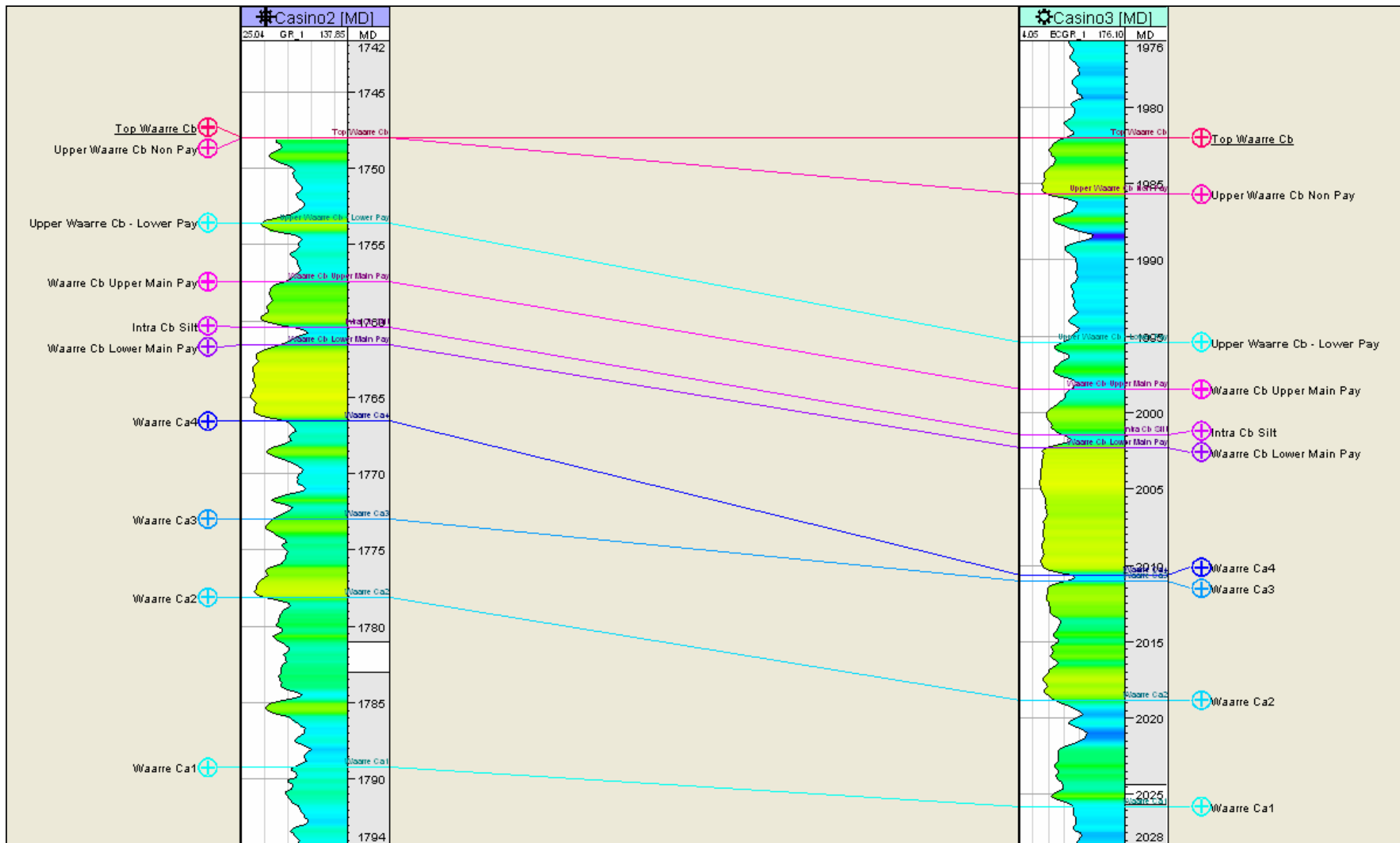


Figure 3.10.3-d: Waarre C reservoir sub-division



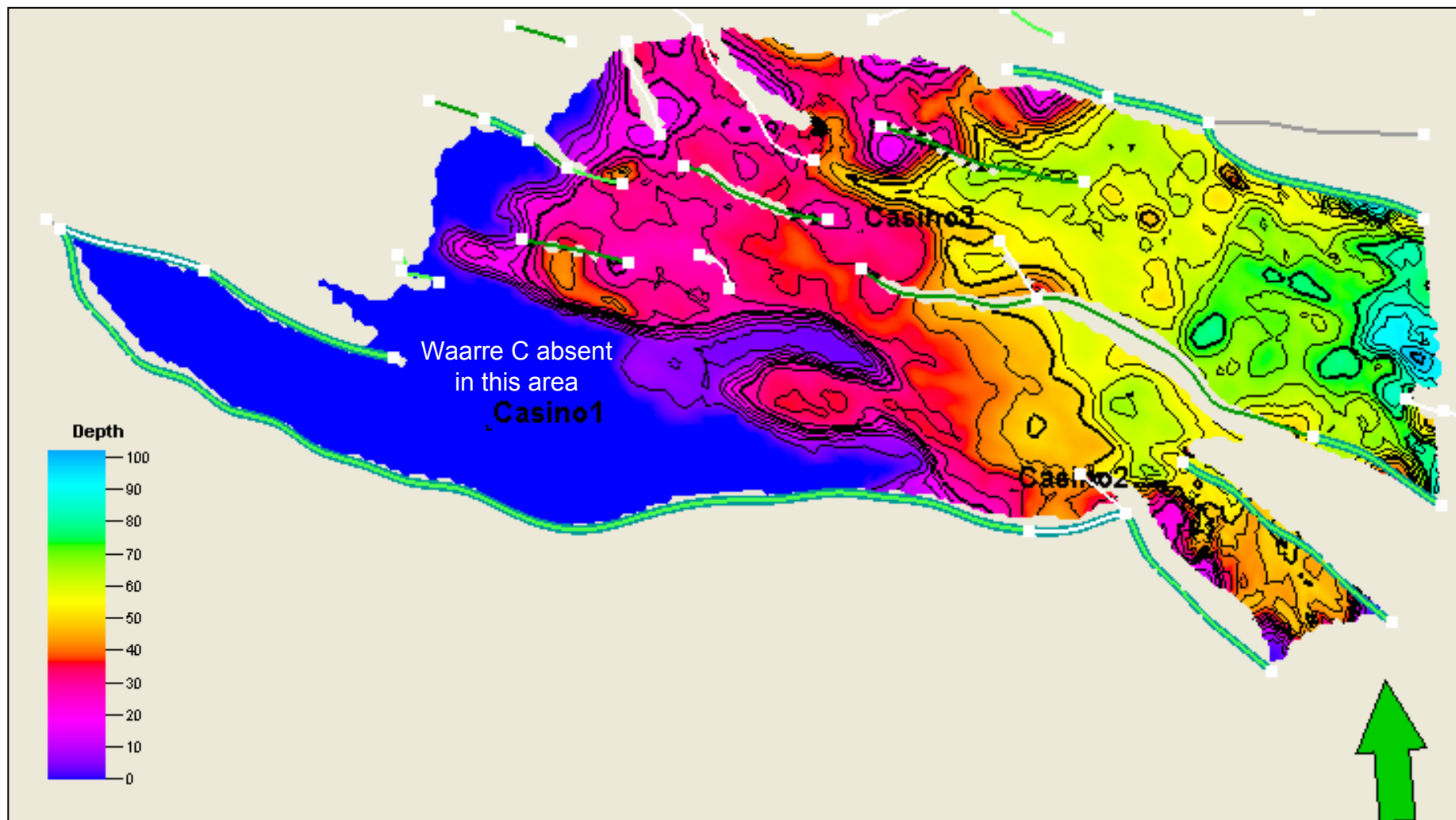


Figure 3.10.3-e: Combined Upper Waarre Cb and Ca/Cb Main Pay isopach

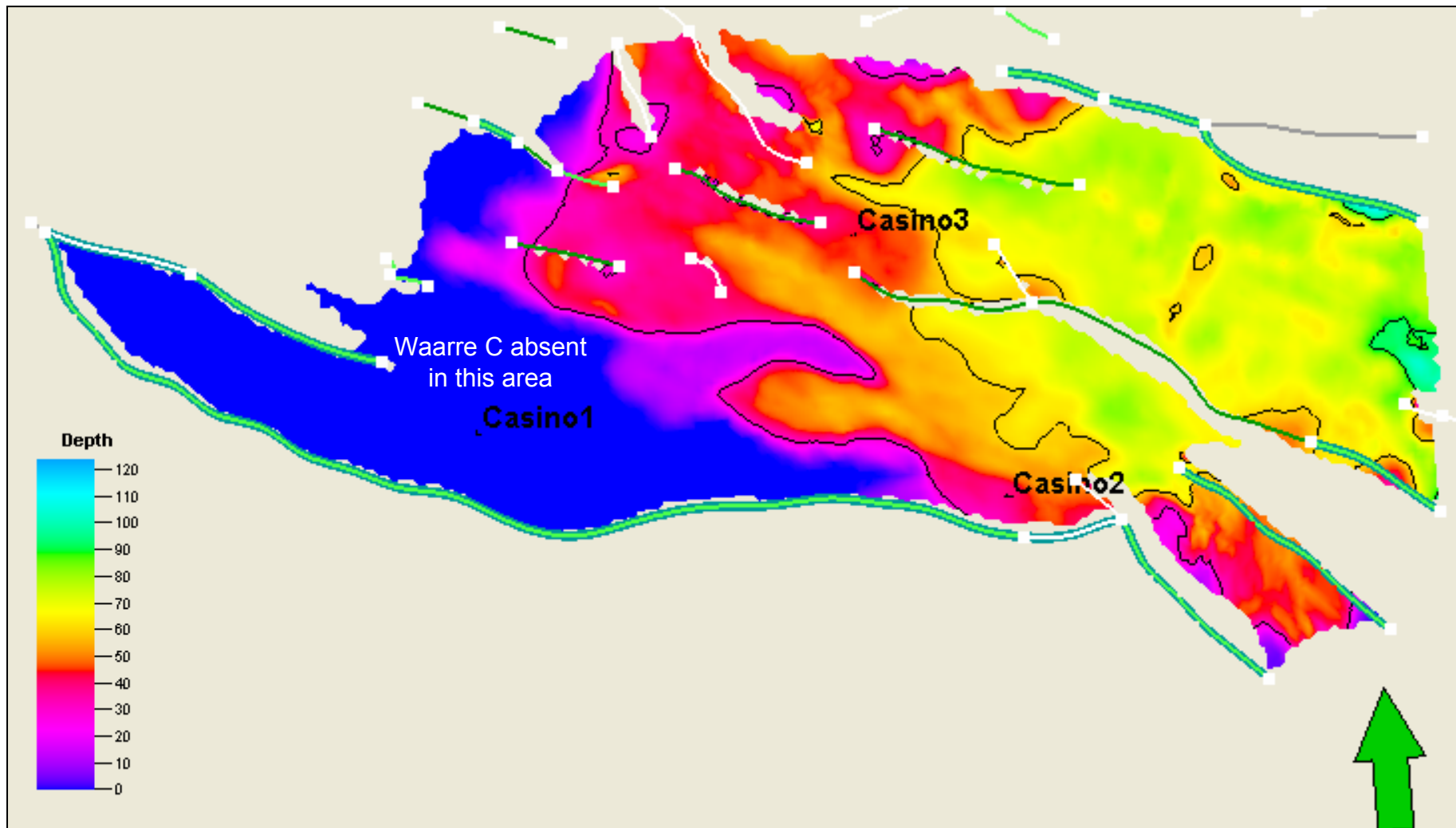


Figure 3.10.3-f: Waarre Ca/Cb Main Pay isopach



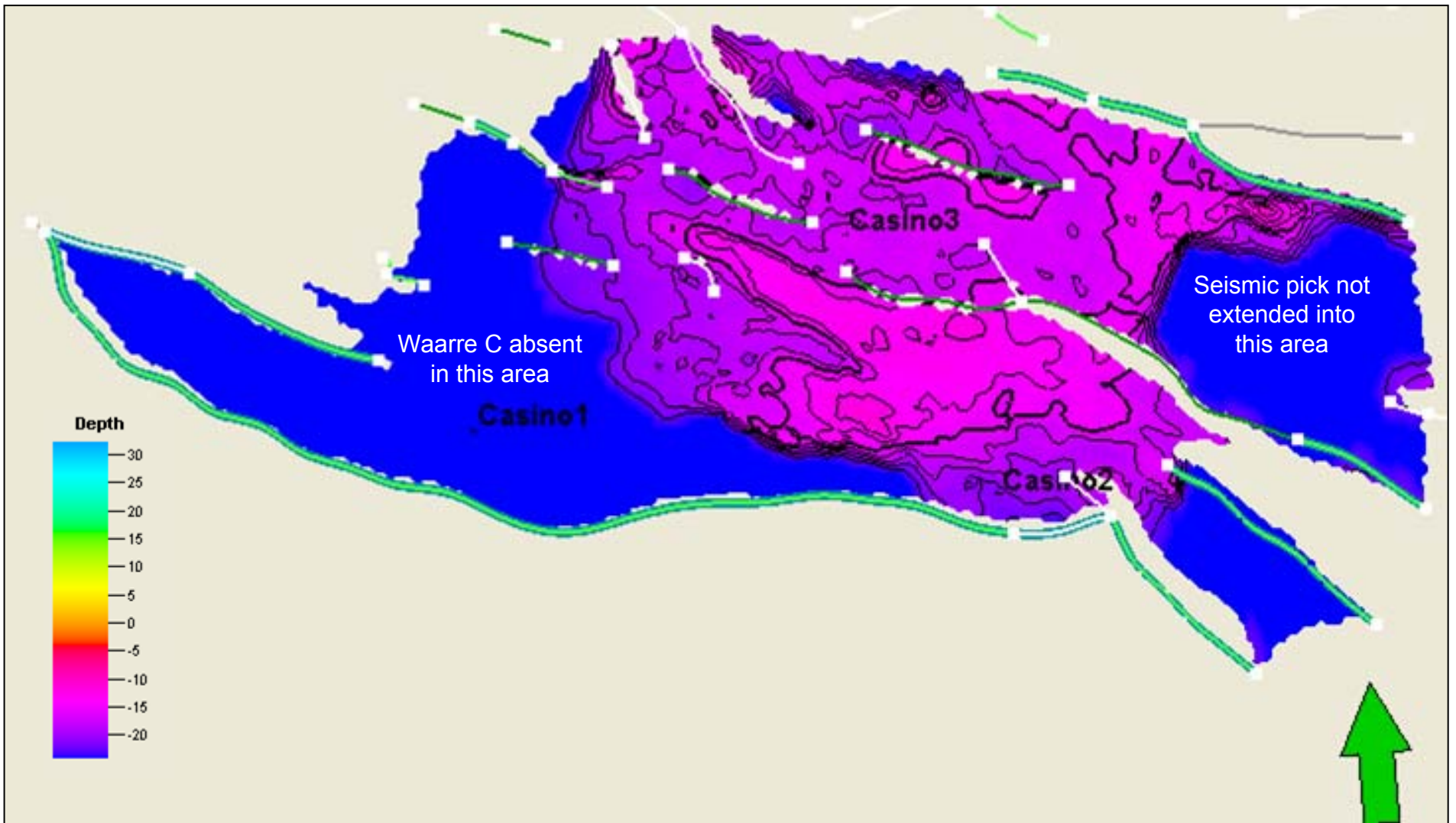
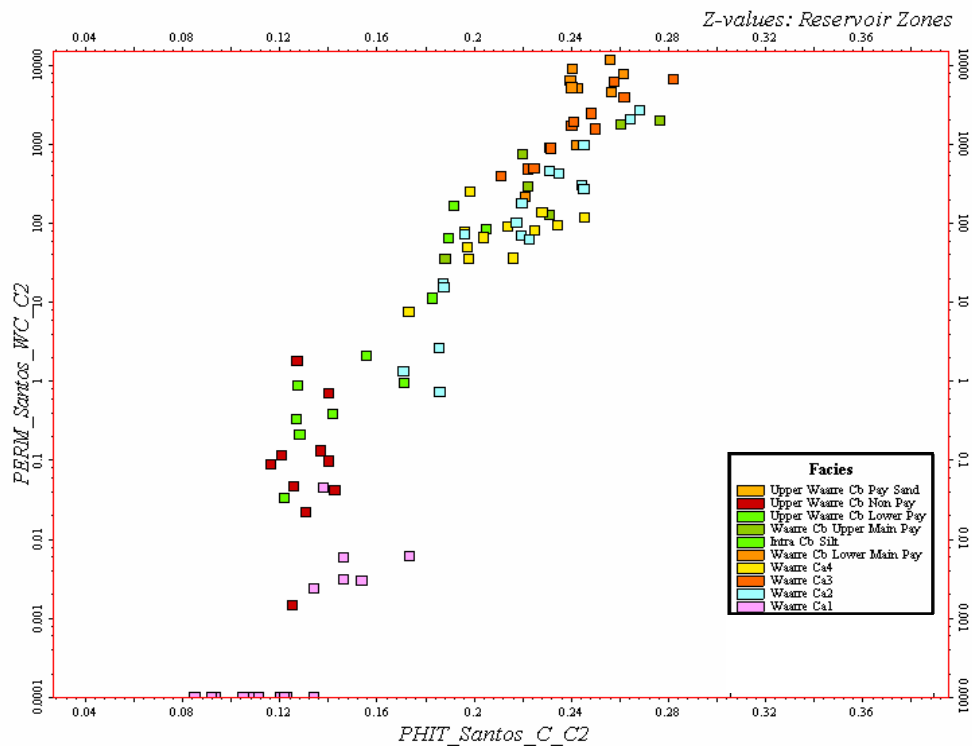
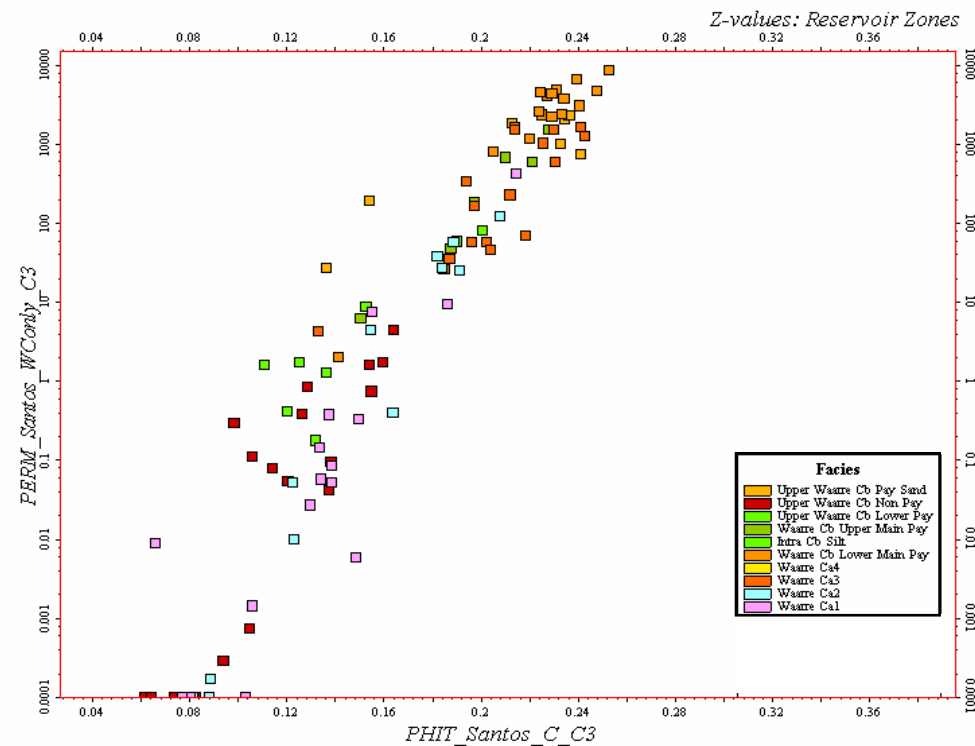


Figure 3.10.3-g: Upper Waarre Cb Pay and Non Pay isopach



■ PHIT\_Santos\_C\_C2 vs. PERM\_Santos\_WC\_C2 vs. Reservoir Zones (Casino2)



■ PHIT\_Santos\_C\_C3 vs. PERM\_Santos\_WCOnly\_C3 vs. Reservoir Zones (Casino3)

Figure 3.10.3-h: Waarre C PHIT versus Perm – Casino-2 & -3

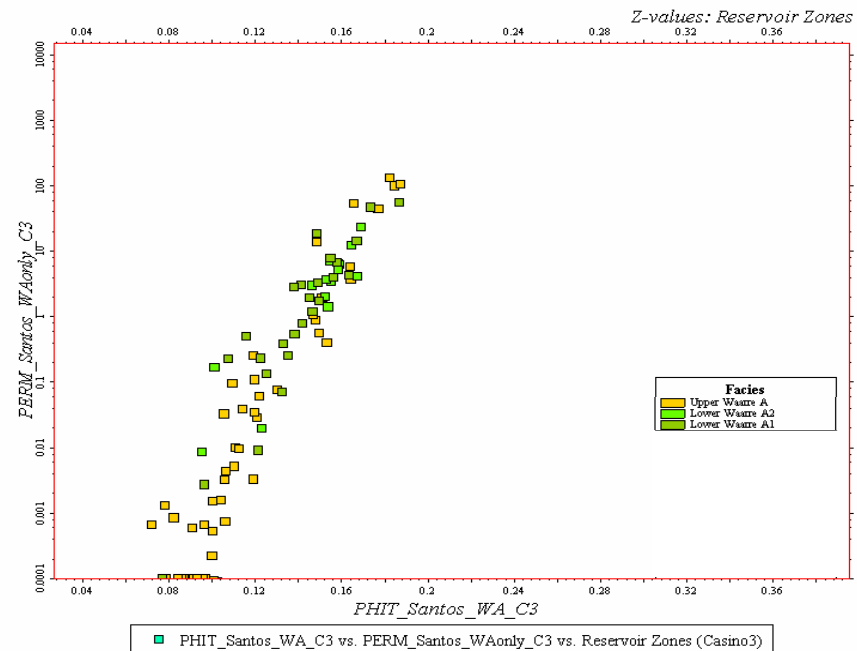
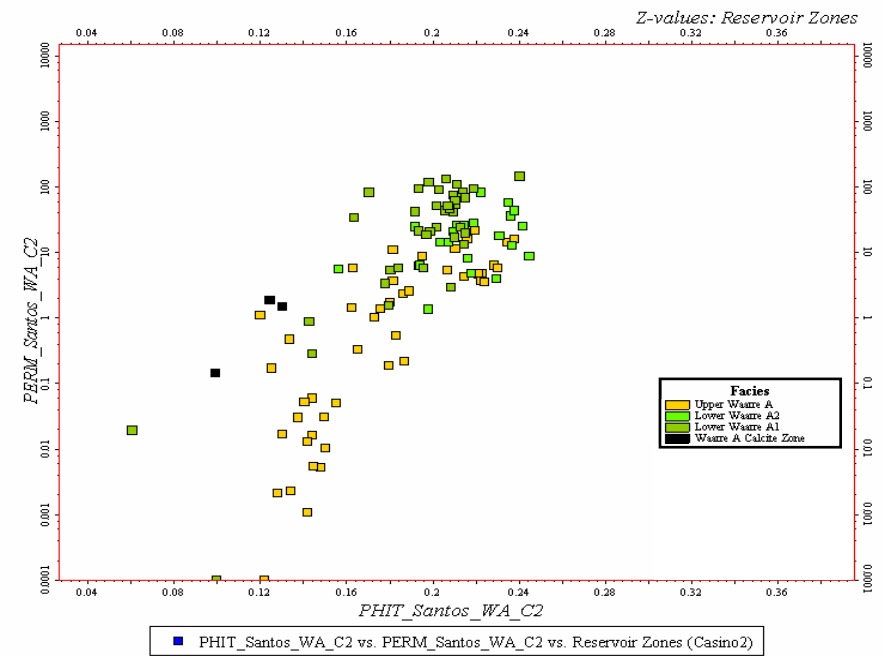
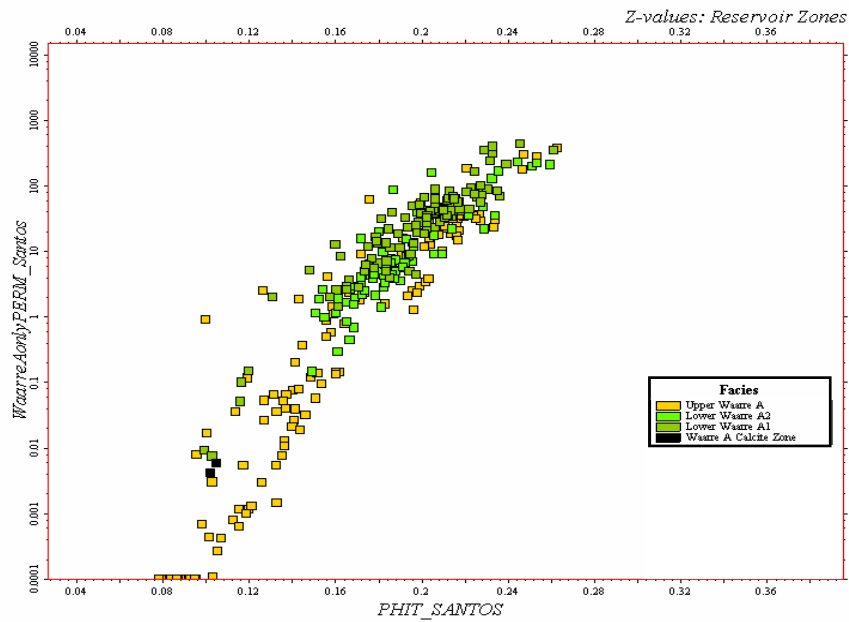


Figure 3.10.3-i: Waarre A PHIT versus Perm – Casino-1,2 & 3

### Casino 2 - Waarre C

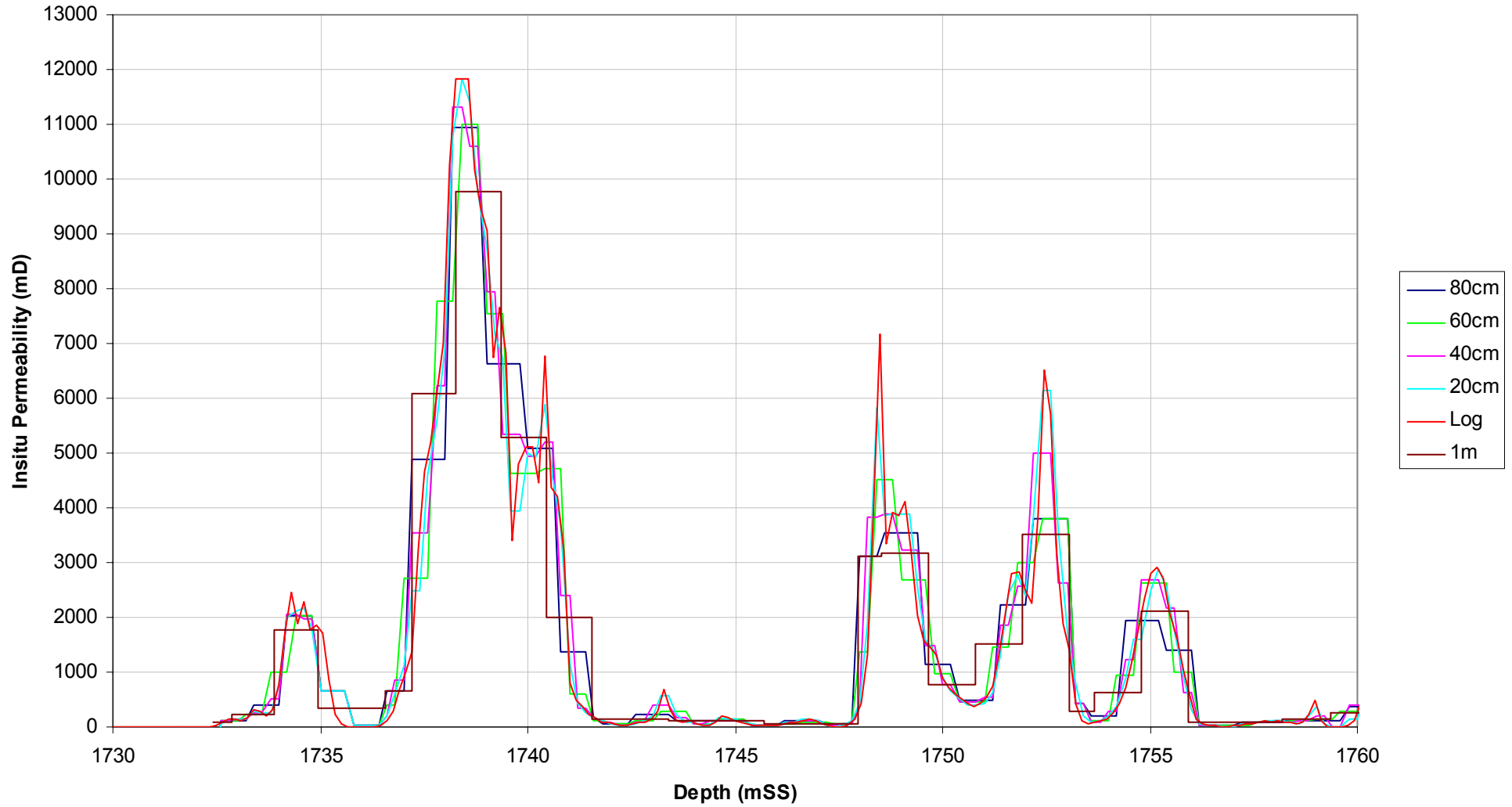


Figure 3.10.4-a: Casino-2 Waarre C Up-scaled permeability compared to original

### Casino 1 - Waarre A

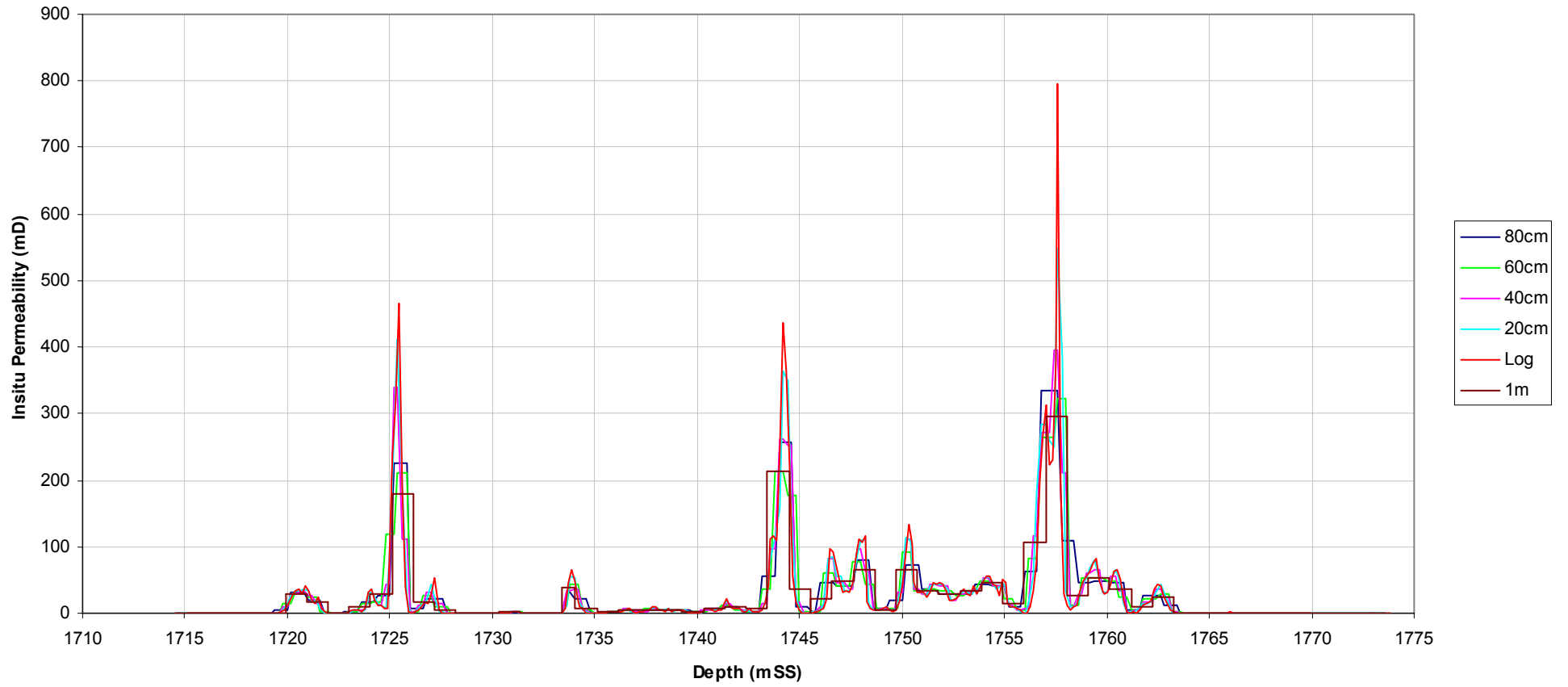


Figure 3.10.4-b: Casino-1 up-scaled permeability compared to original

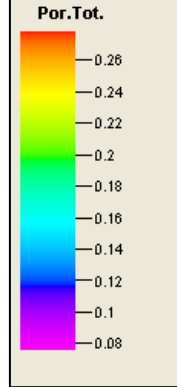
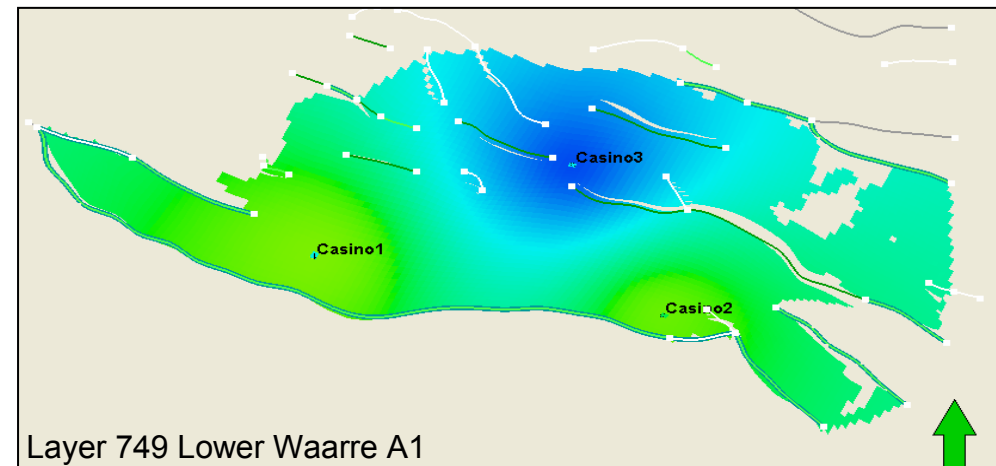
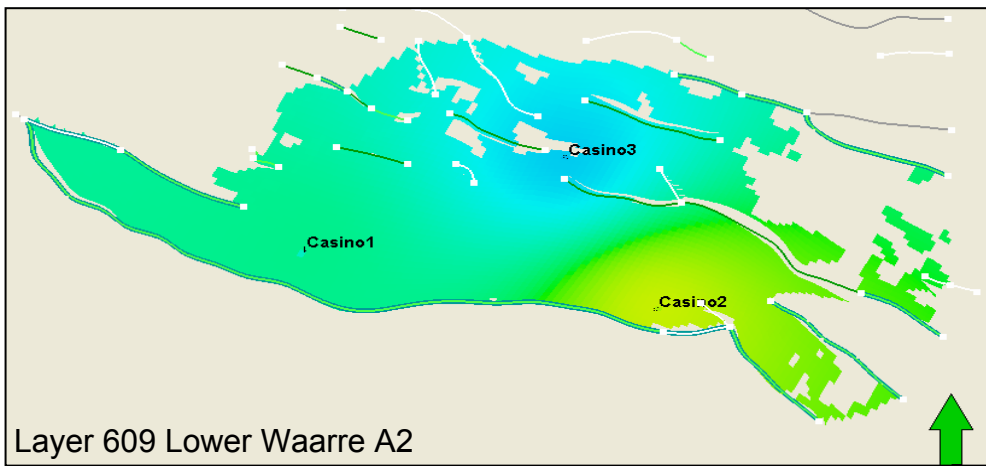
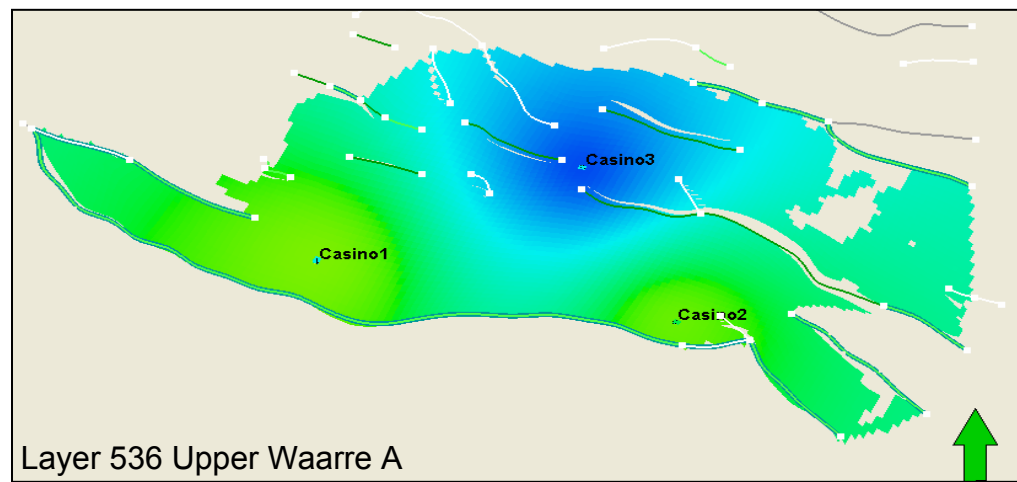
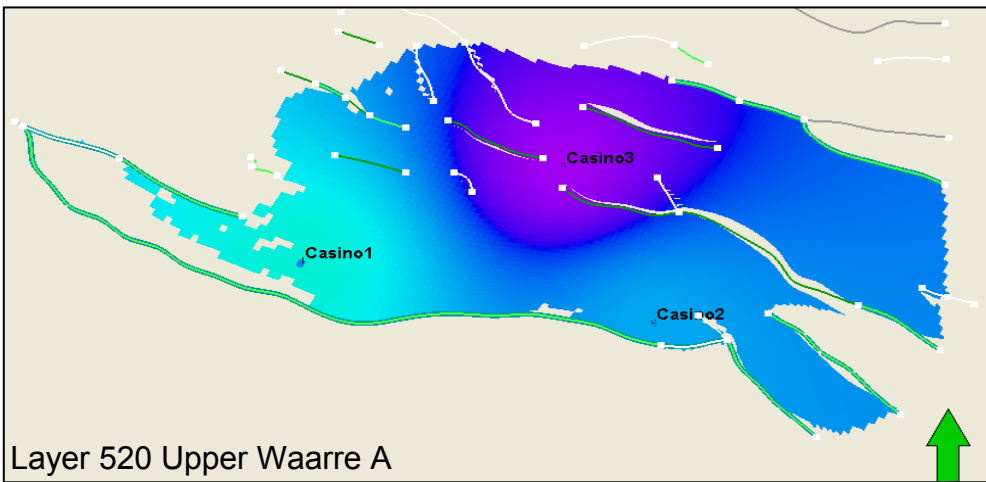


Figure 3.10.5-a: Waarre A upscaled porosity – Base Case model



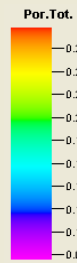
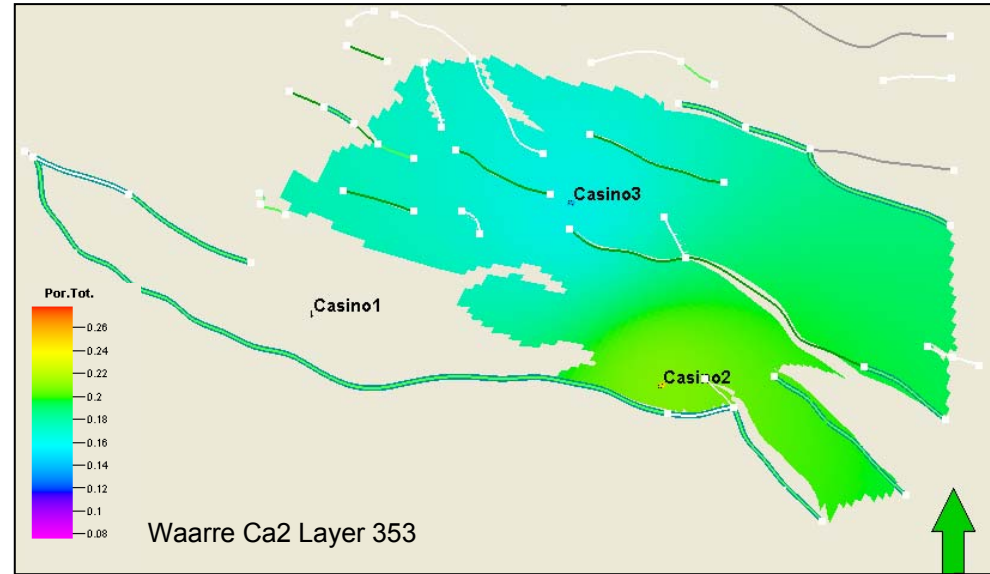
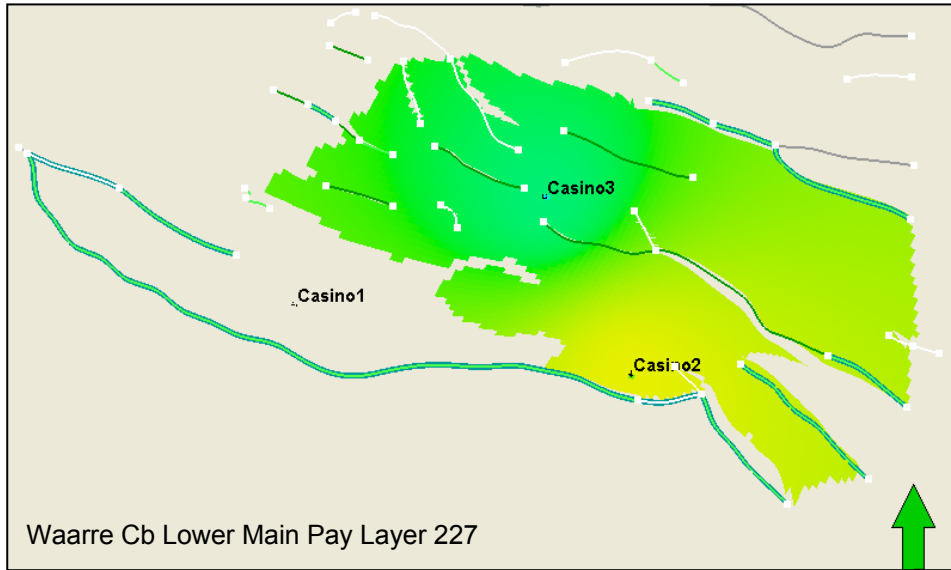
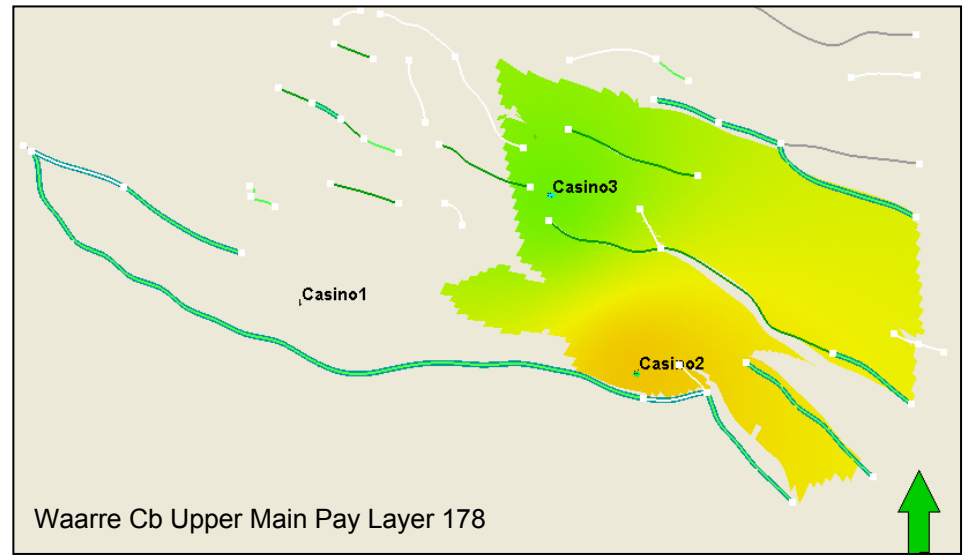
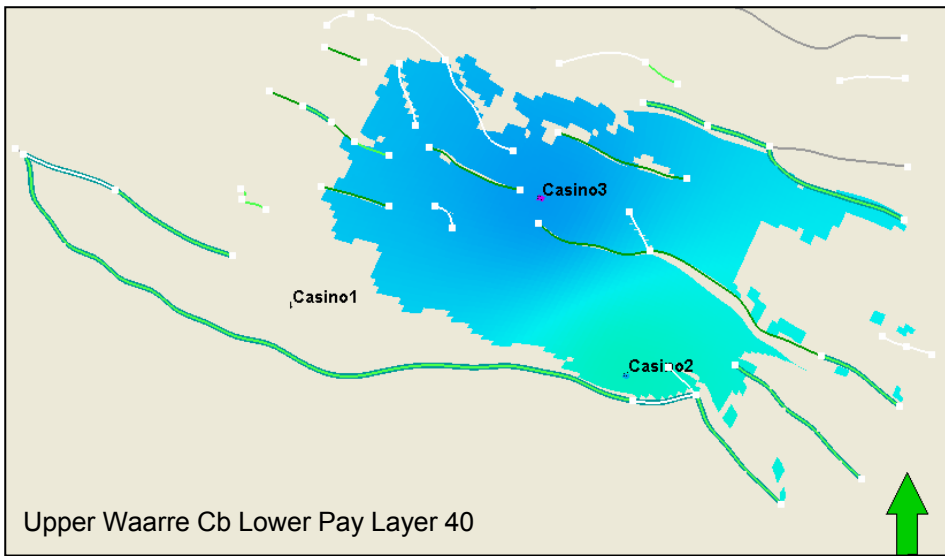


Figure 3.10.5-b: Waarre C upscaled porosity – Base Case model

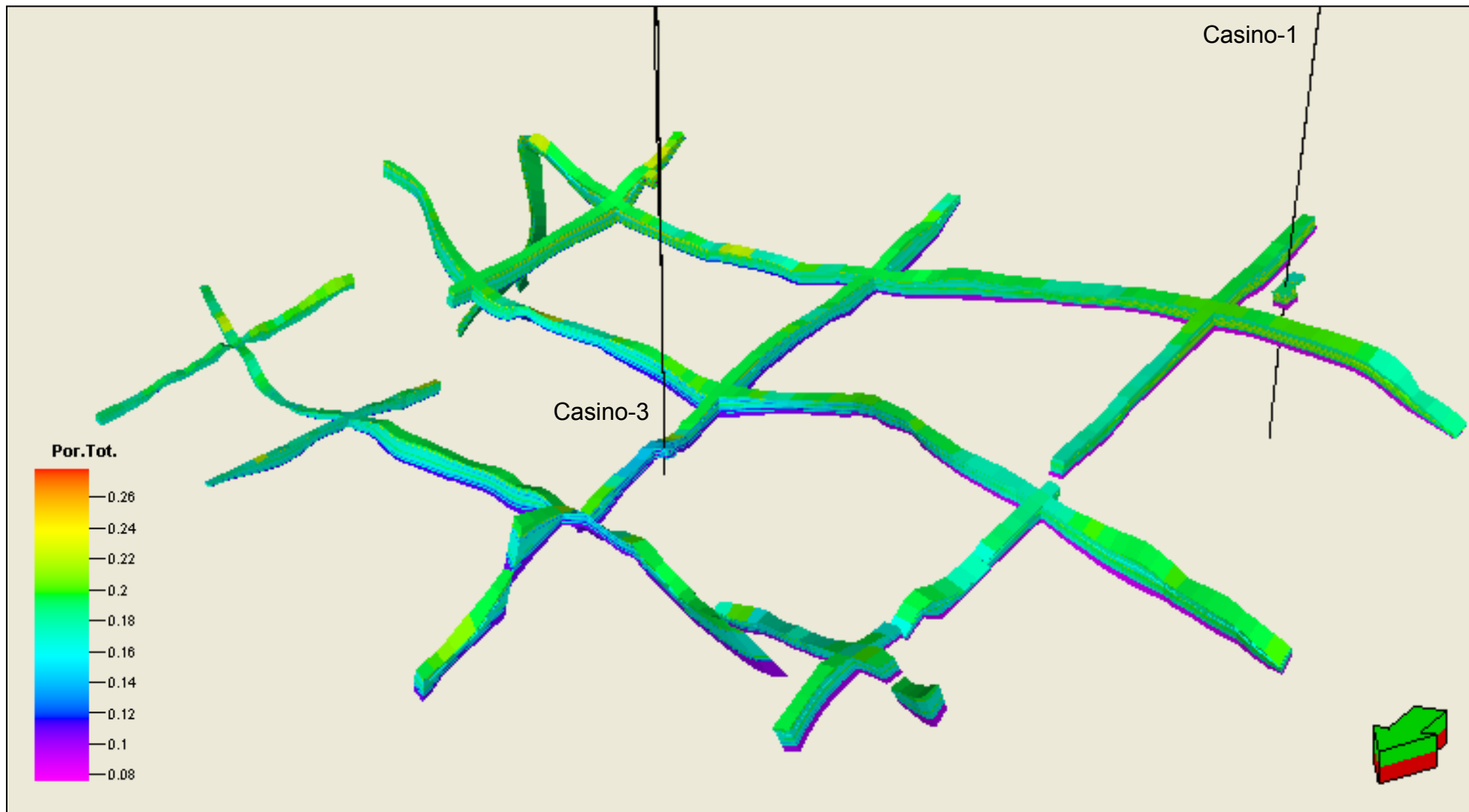


Figure 3.10.5-c: Lower Waarre A visualisation of porosity distribution

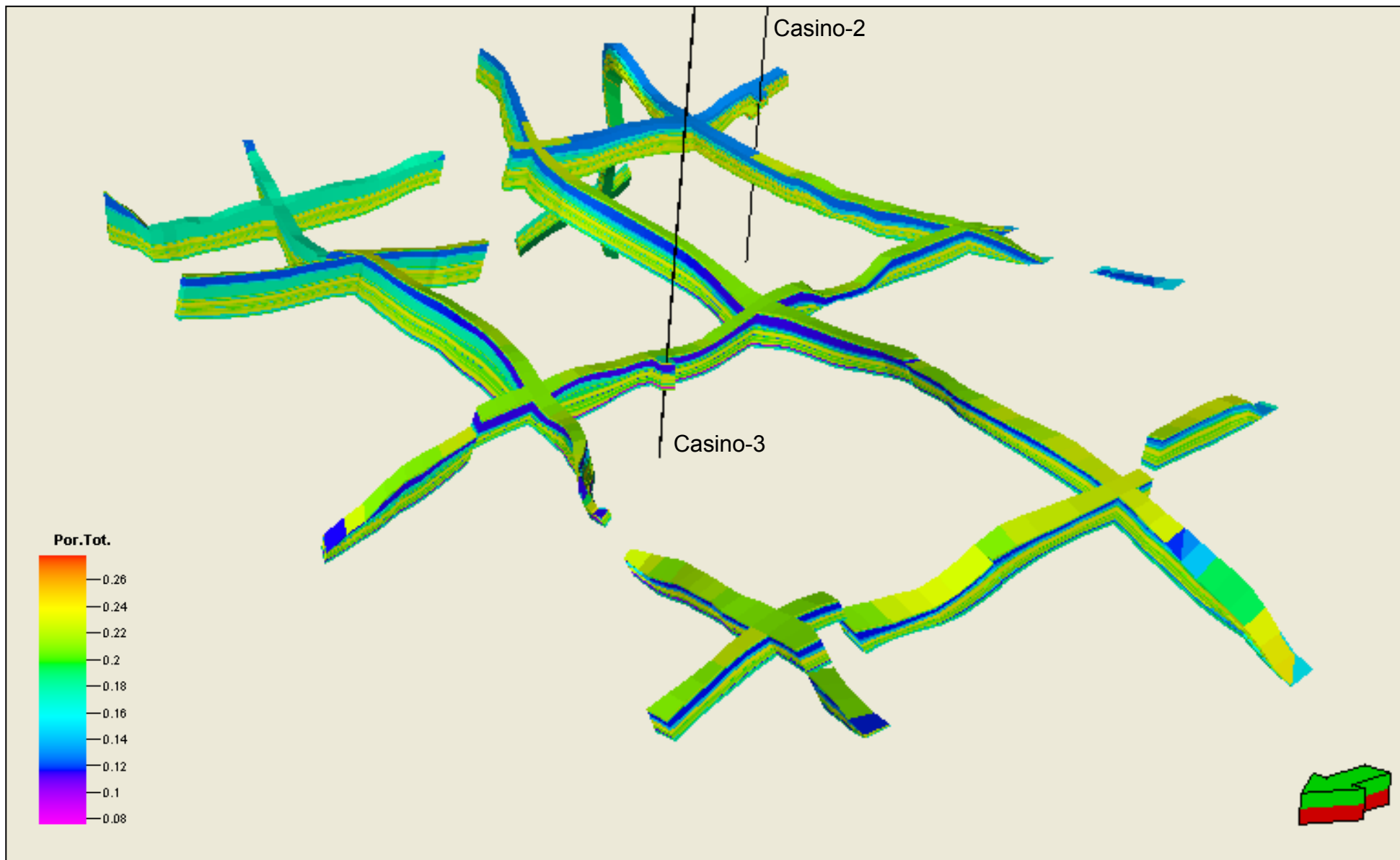


Figure 3.10.5-d: Waarre C visualisation of porosity distribution

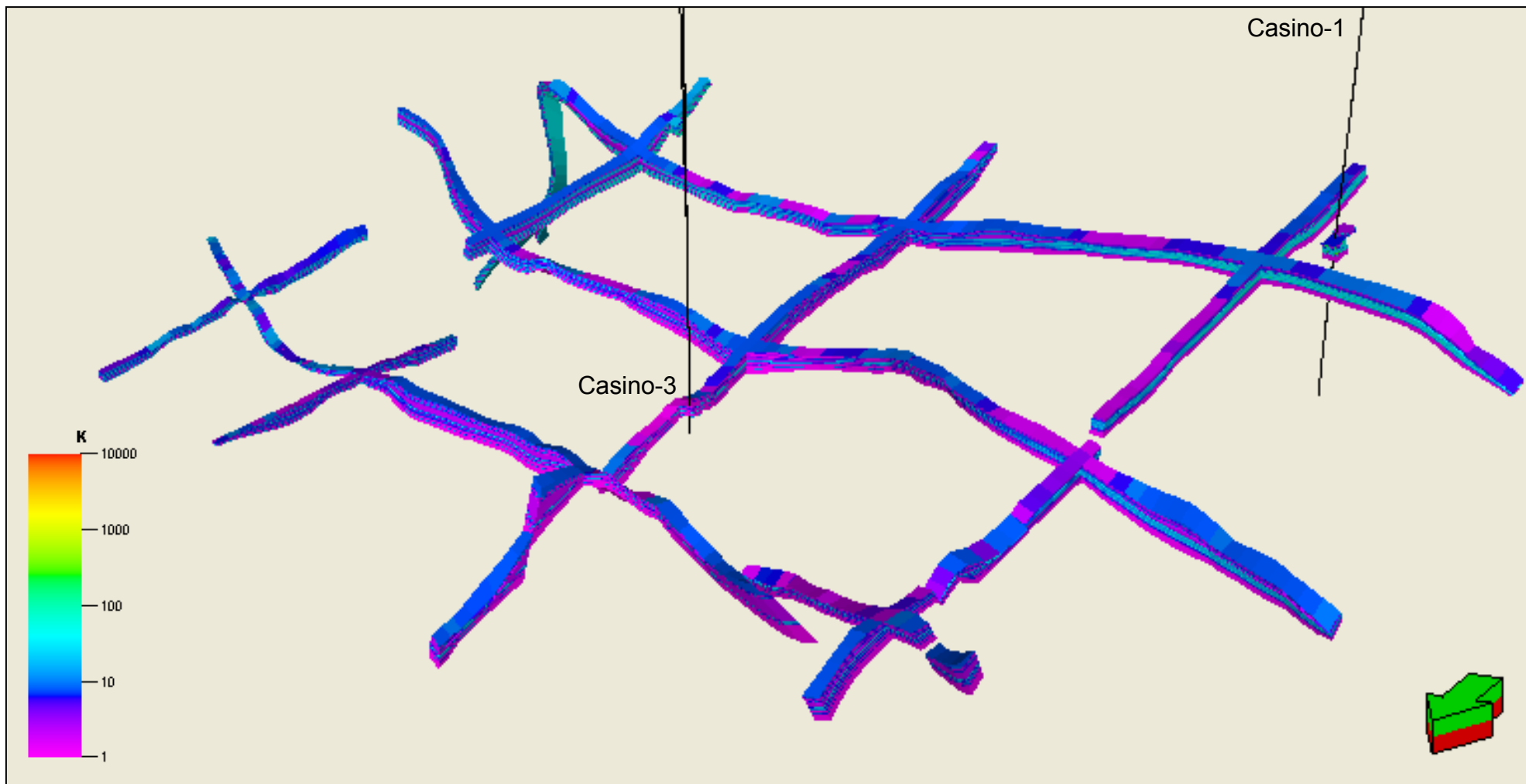


Figure 3.10.5-e Lower Waarre A visualisation of permeability distribution

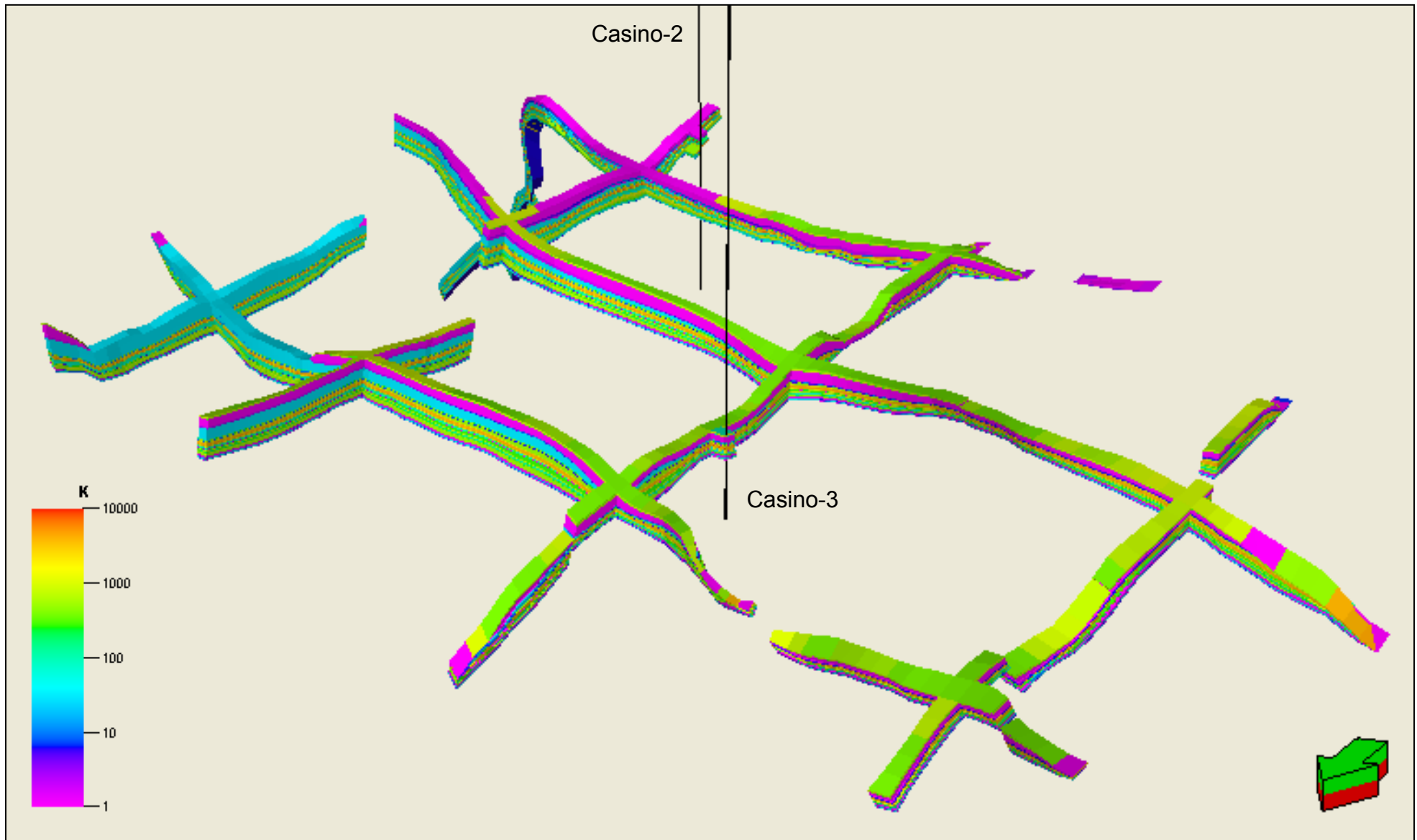
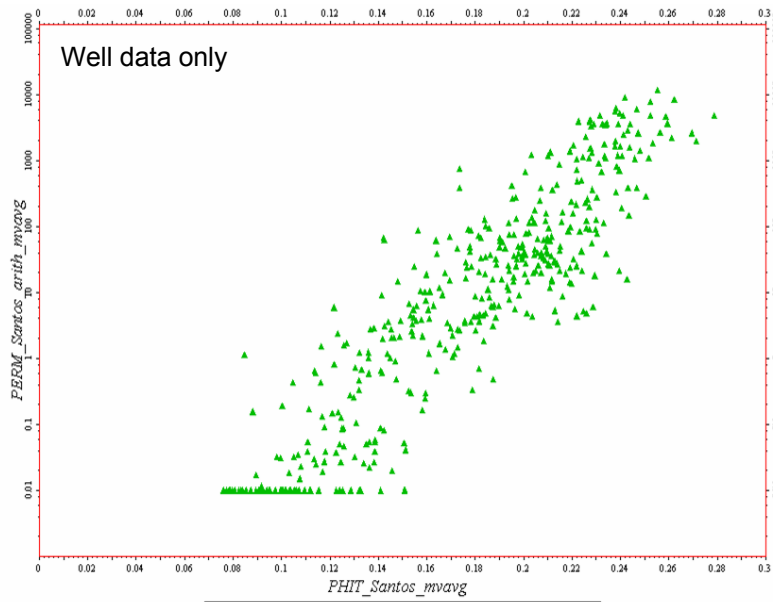
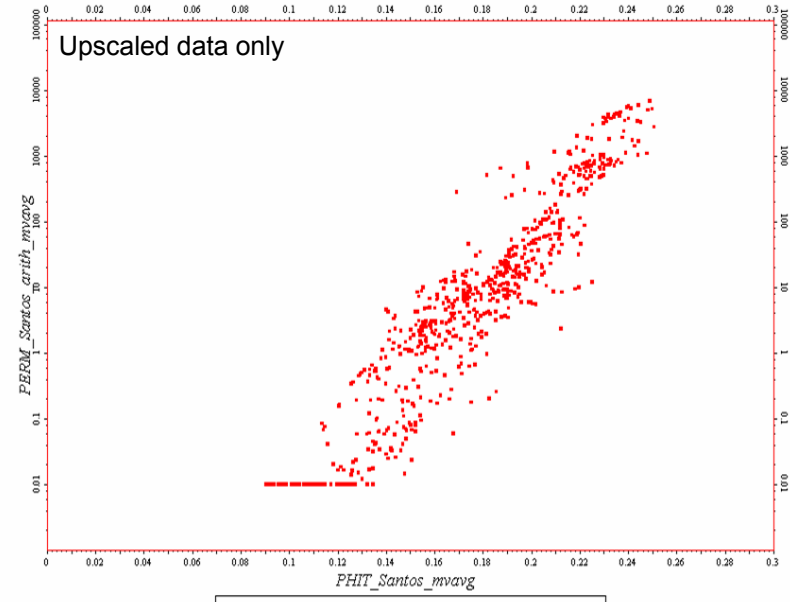


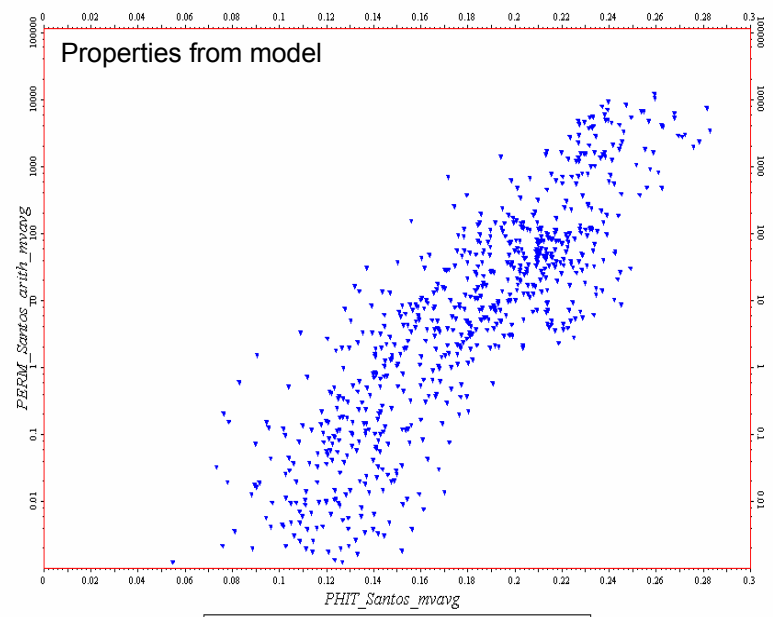
Figure 3.10.5-f: Waarre C visualisation of permeability distribution



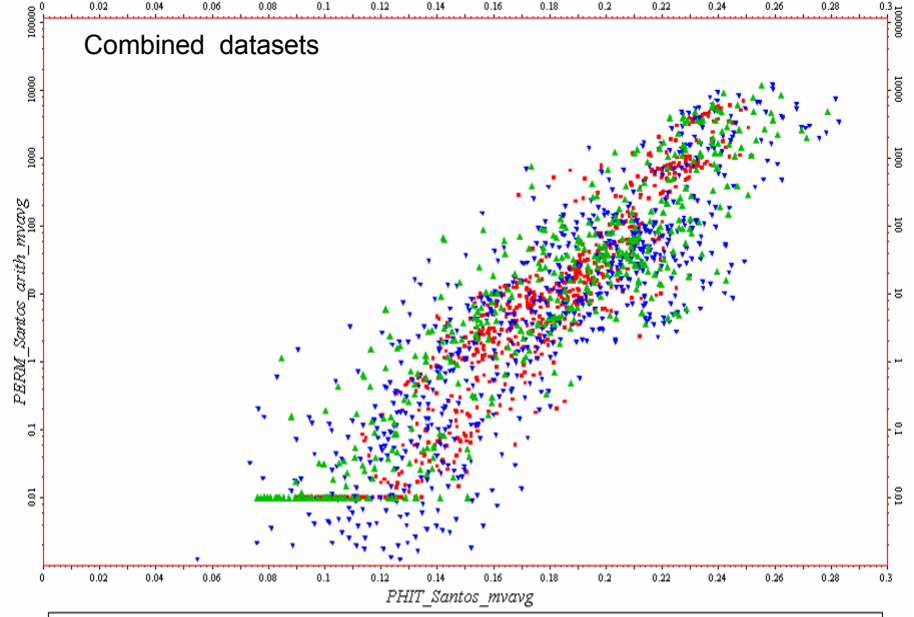
▲ PHIT\_Santos\_mvavg vs. PERM\_Santos\_arith\_mvavg (Upscaled)



● PHIT\_Santos\_mvavg vs. PERM\_Santos\_arith\_mvavg (All cells)



▼ PHIT\_Santos\_mvavg vs. PERM\_Santos\_arith\_mvavg (Well logs)



● PHIT\_Santos\_mvavg vs. PERM\_Santos\_arith\_mvavg (All cells) ▲ PHIT\_Santos\_mvavg vs. PERM\_Santos\_arith\_mvavg (Upscaled)  
▼ PHIT\_Santos\_mvavg vs. PERM\_Santos\_arith\_mvavg (Well logs)

Figure 3.10.5-g: Poroperm Crossplots – Well only, upscaled data, properties from model and combined datasets



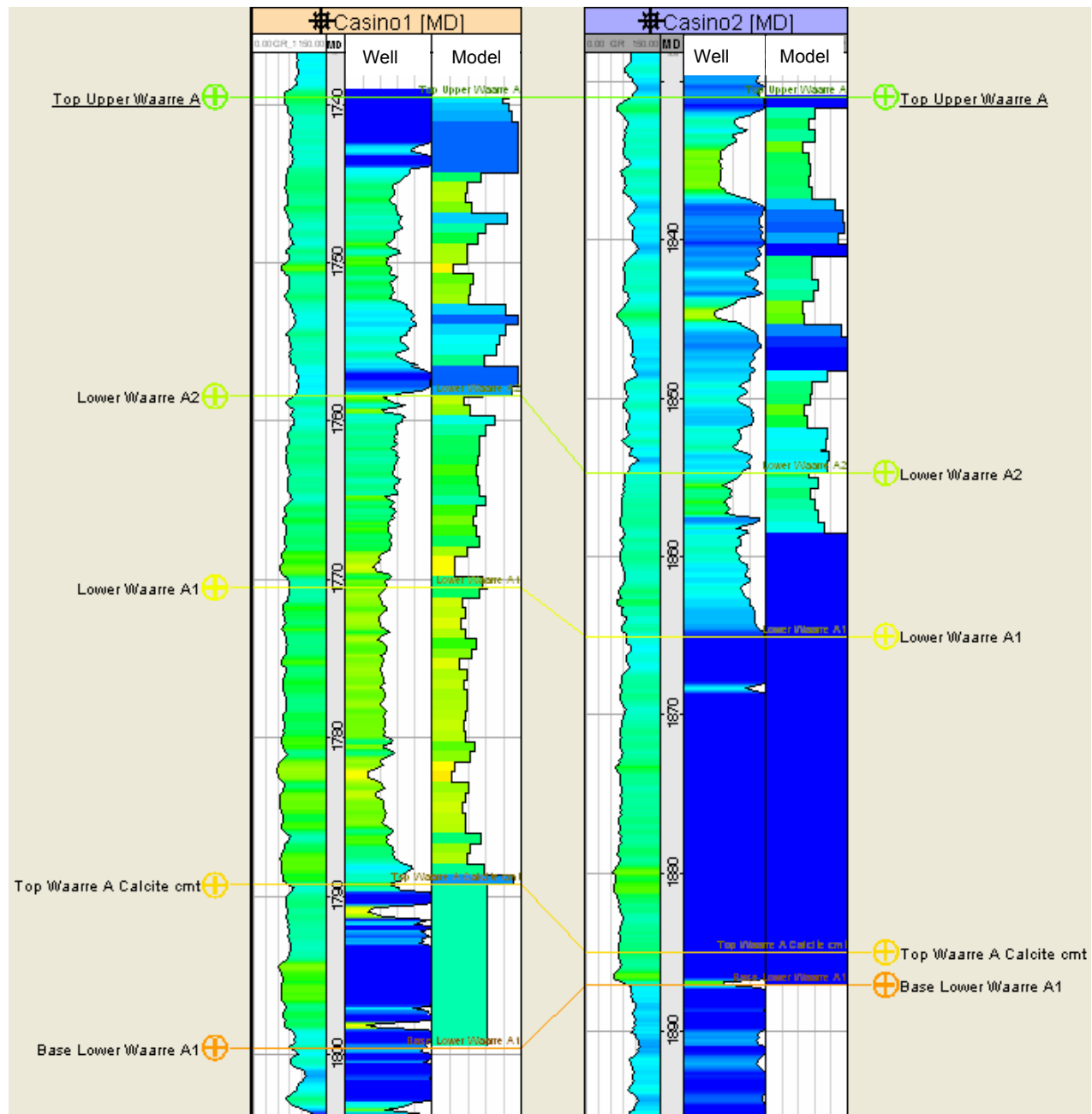


Figure 3.10.6-a: Lower Waarre A - Well derived Sw vs Model's Sw

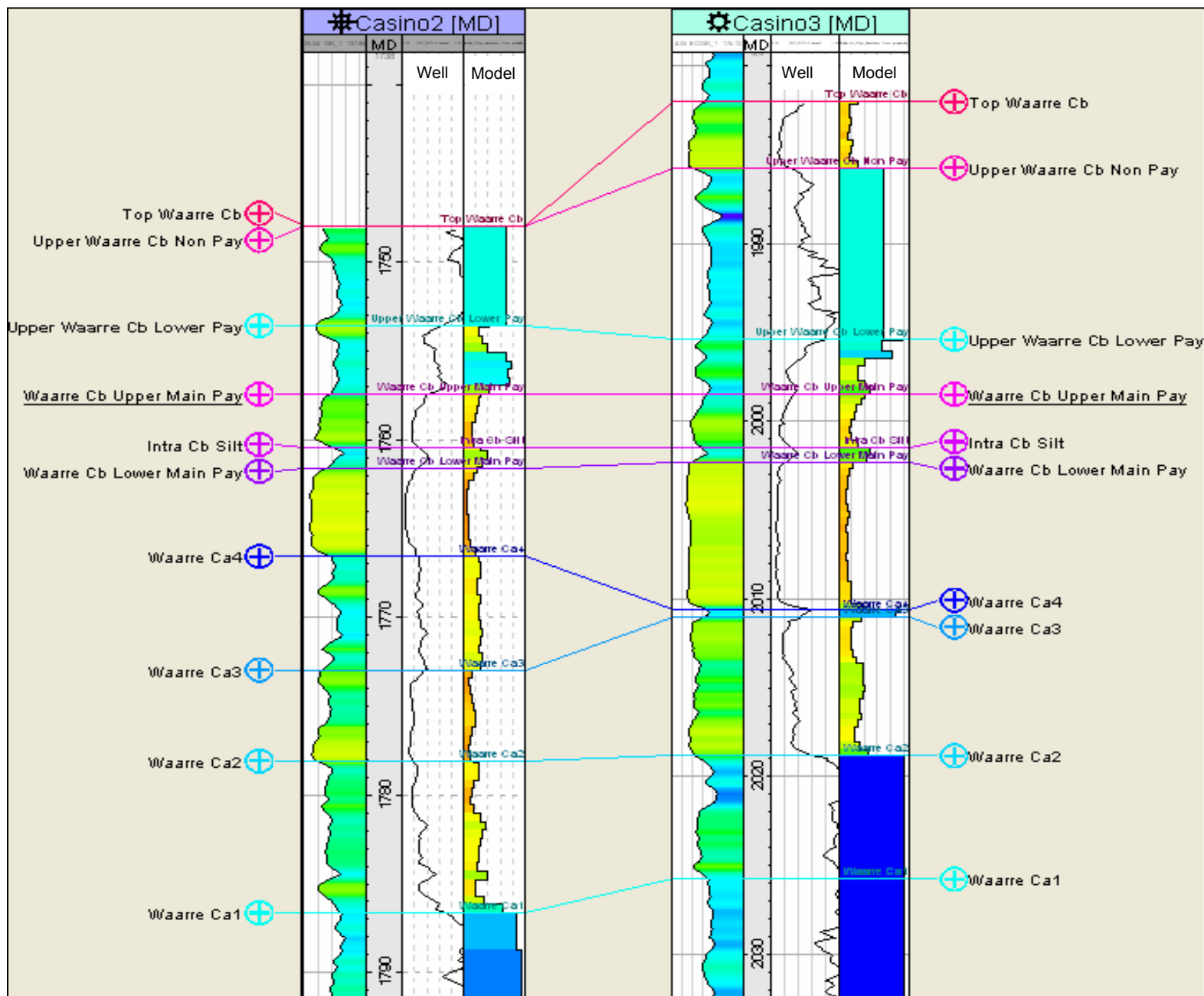
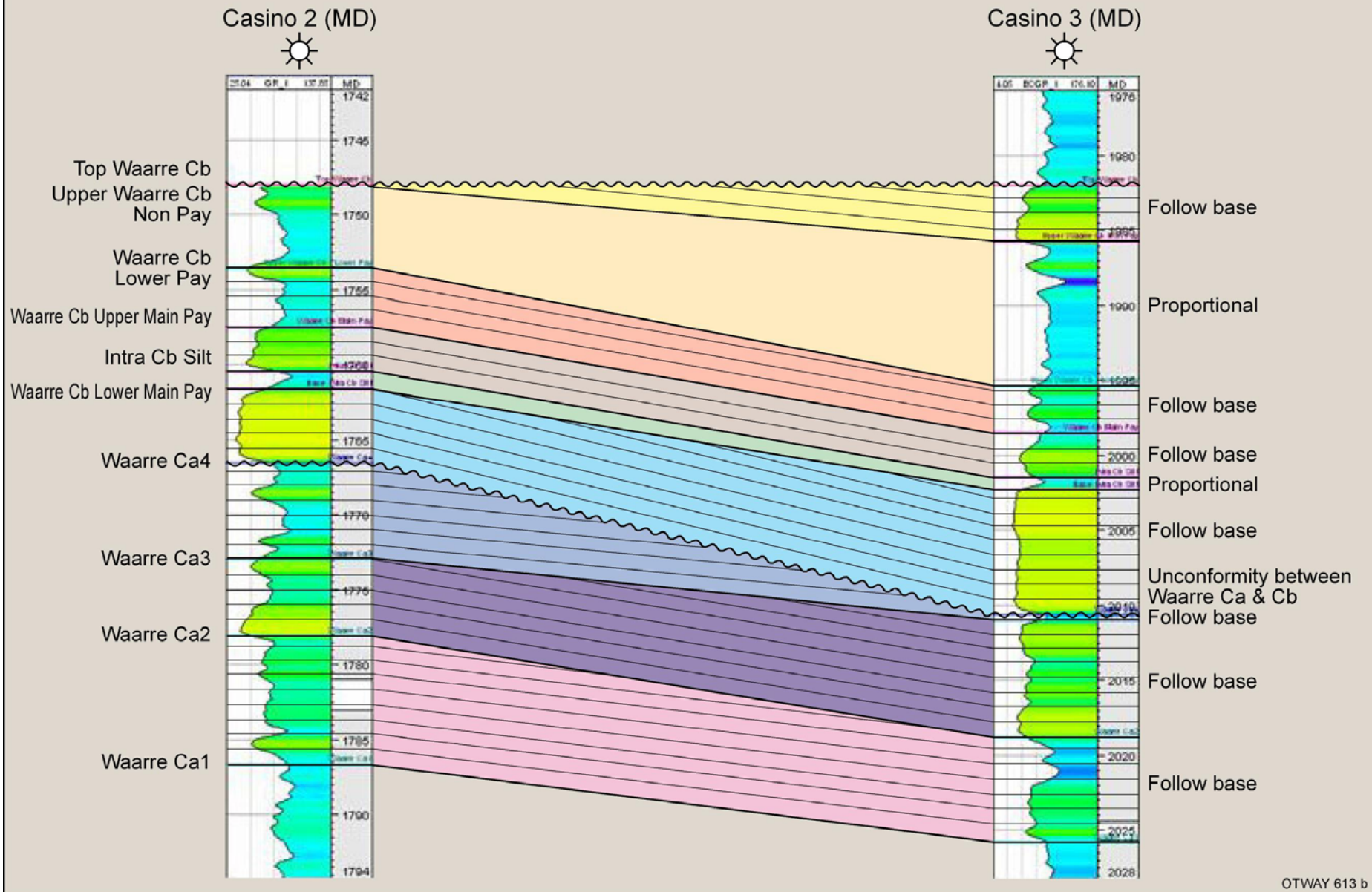


Figure 3.10.6-b: Waarre C - Well derived Sw vs Model's Sw

# Schematic of Interlayer Geometry Waarre C - Base Case



OTWAY 613 b

Figure 3.10.7-a: Waarre C intra layer sub-division – Base Case

# Schematic of Interlayer Geometry Waarre C - Hybrid Case

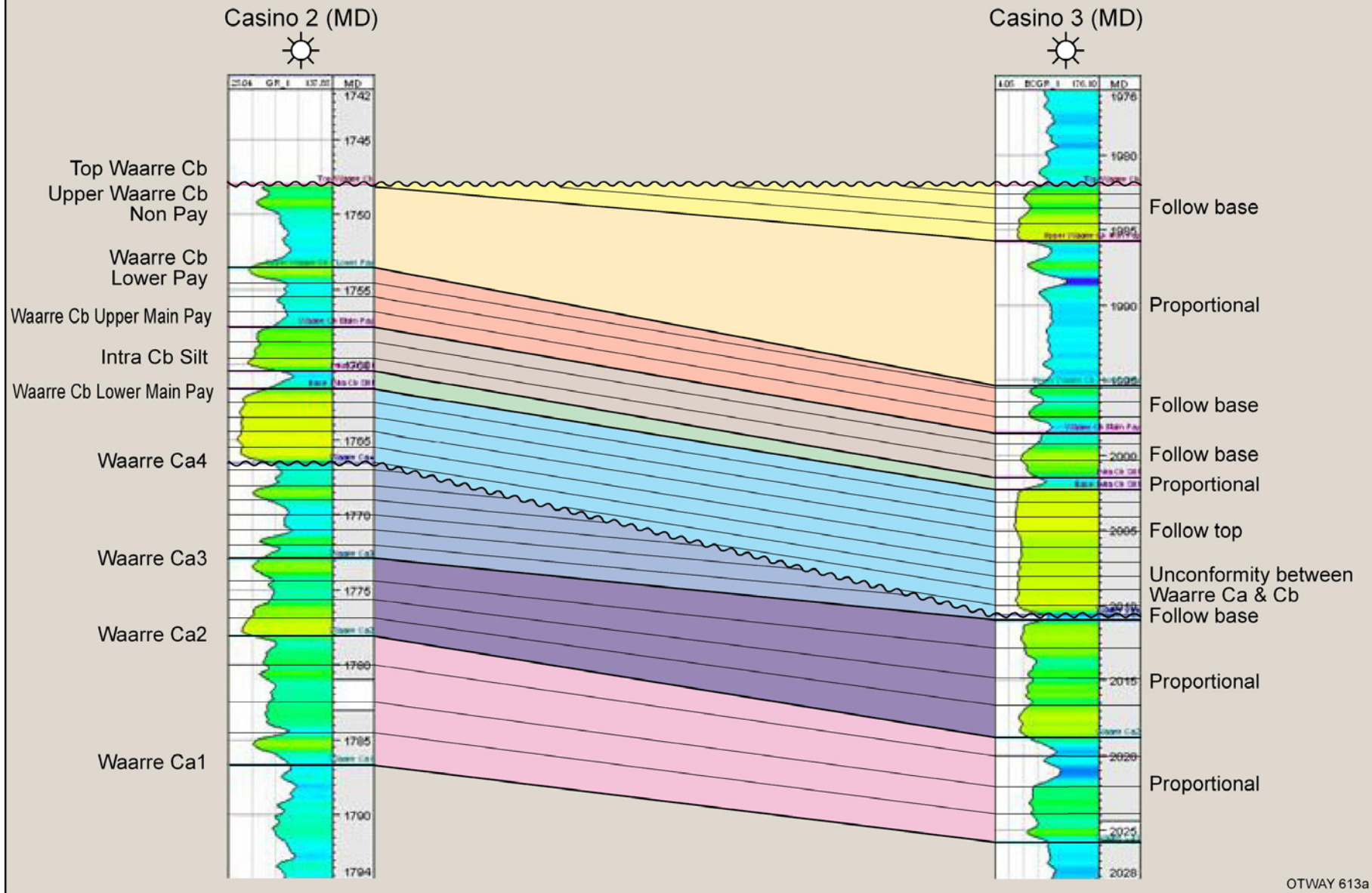


Figure 3.10.7-b: Waarre C intra layer sub-division – hybrid case