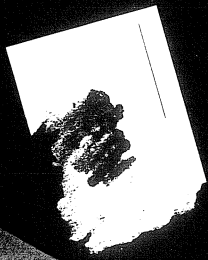


DEPT. NAT. RES. & ENV.
PE032351

Kestrel Information Management/IL
TRC03208

C E W	6812	VP No's	187	To	221
Field Reel No.	46	Recorder	7T1	From	94
Client of Vic	2/2/83	7T1	From	94	To
Line No.	83	MPX	127	Sample Rate	2ms
COLAC	17-96	Sweep Freq.	17-96	Length of Rec.	168L



DAVISTAPE
6250 BPI

GEOPHYSICAL
MAGNETICS
HASTECOM 81 Box 8