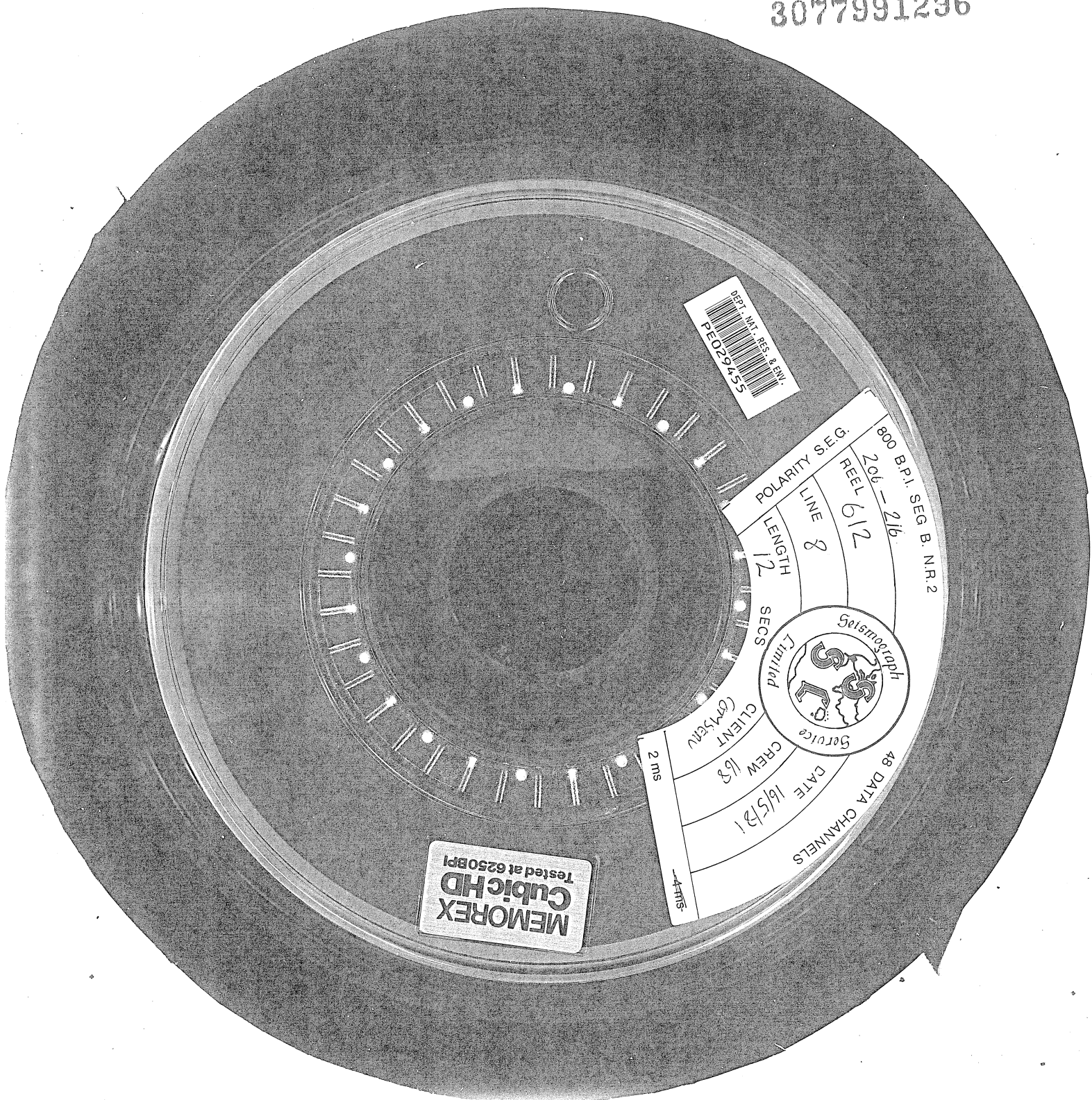
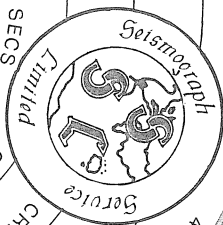


3077991296



800 B.P.I. SEG. B. NR. 2
REEL 206-219
POLARITY SEG.
LINE 8
LENGTH 12 SECS



48 DATA CHANNELS
DATE 16/5/81
CREW 68
CLIENT GOMSON
Service
2 ms
-AMS-

MEMOREX
CubicHD
Tested at 6250BPI