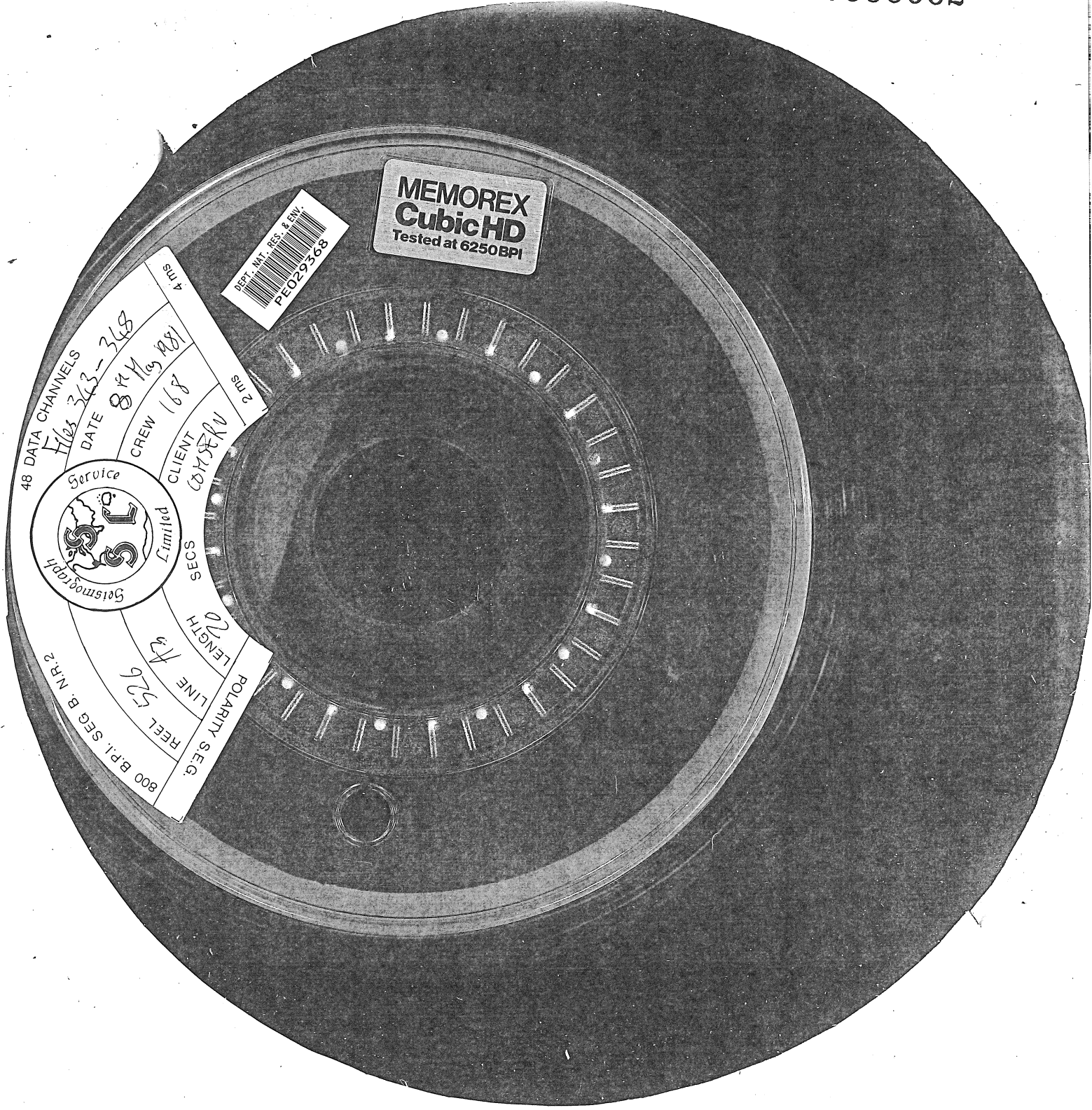


3077990062



**MEMOREX**  
**Cubic HD**  
Tested at 6250BPI

DPT, MT, RES. & EN.  
PEO29368

48 DATA CHANNELS  
FILE 343-348  
DATE 8 May 1981  
CREW 168  
CLIENT COMSERV  
SECS Limited  
POLARITY SEG. 02  
LINE 43  
REEL 526  
800 B.P.I. SEG. B. NR. 2

