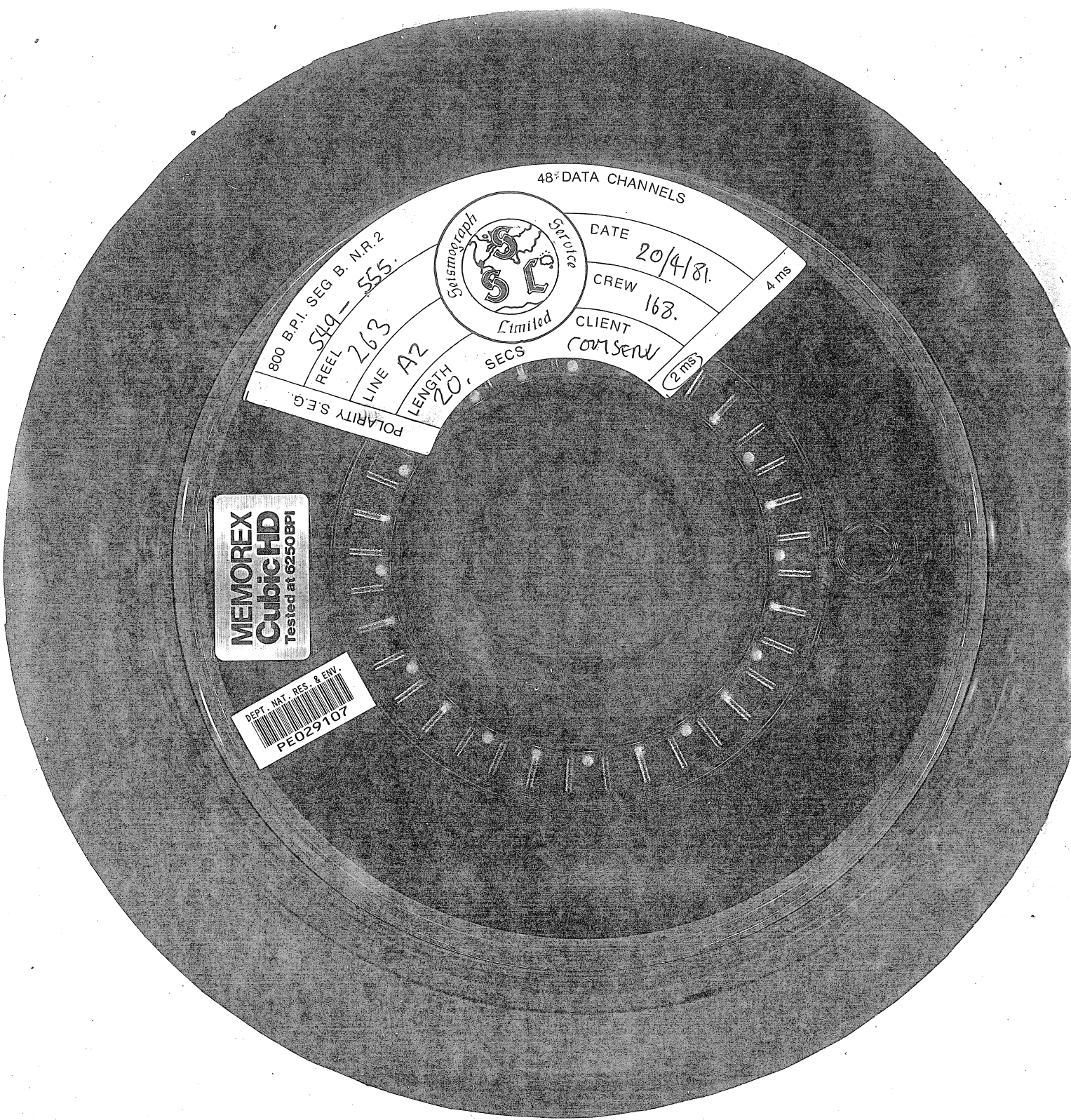
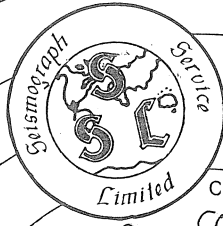


3077989245



800 B.P.I. SEG B. NR. 2
 REEL 549 - 555.
 LINE 263
 POLARITY S.E.G.
 LENGTH 20 SECS
 48 DATA CHANNELS
 DATE 20/4/81
 CREW 168
 CLIENT COMSERV
 4 ms
 2 ms



MEMOREX
CubicHD
 Tested at 6250 BPI

DEPT. MAT. RES. & ENW.
 PE029107