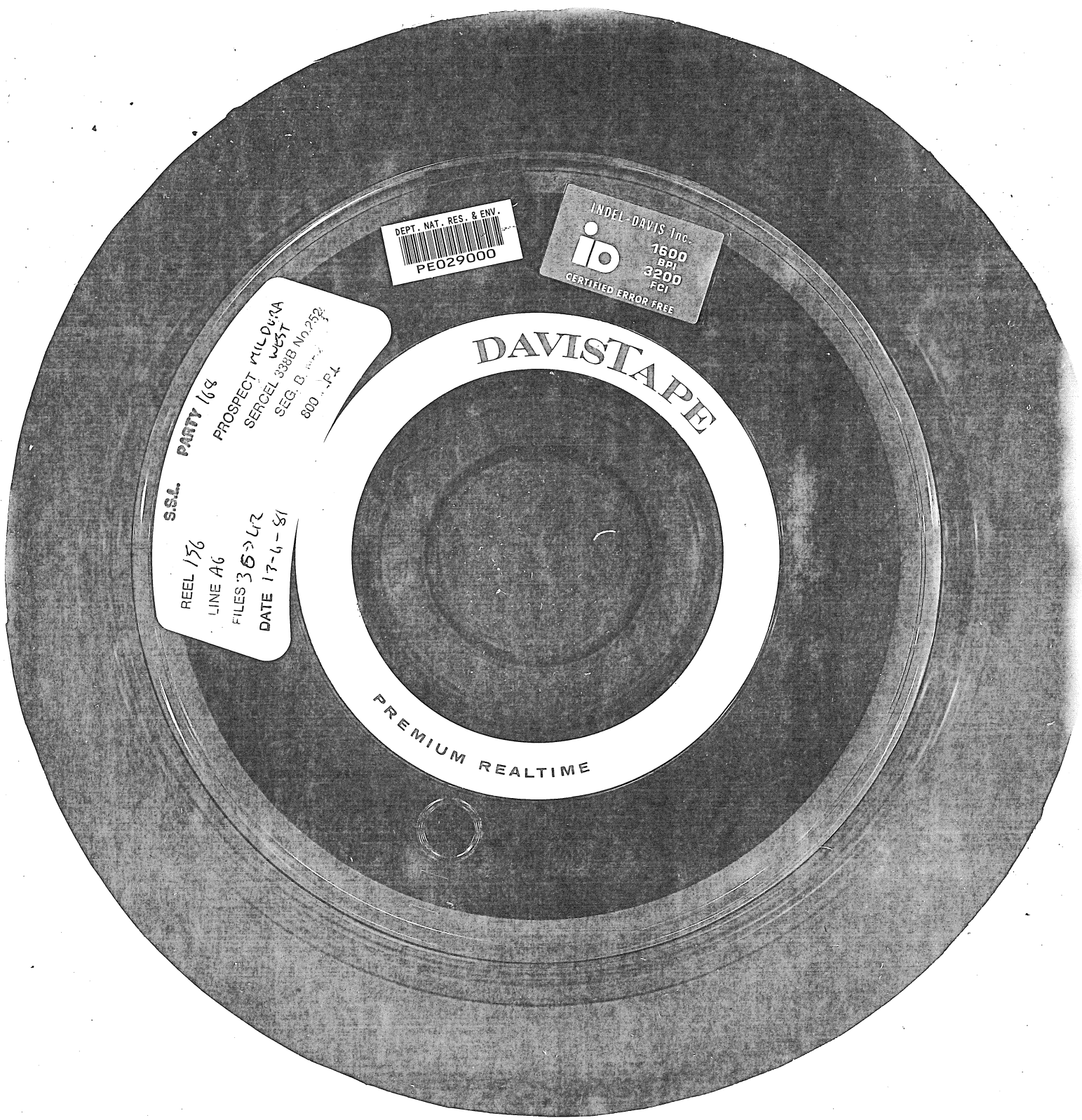


3077988094



DEPT. NAT. RES. & ENV.
PE029000

INDEL-DAVIS Inc.
id
1600
BPI
3200
FCI
CERTIFIED ERROR FREE

SSA PARTY 169
REEL 156
LINE A6
FILES 36 → 42
DATE 17-6-81
PROSPECT MILDEN
SERCEL 338B No. 252
SEG. B
800 - JPL

PREMIUM REALTIME

DAVISTAPE