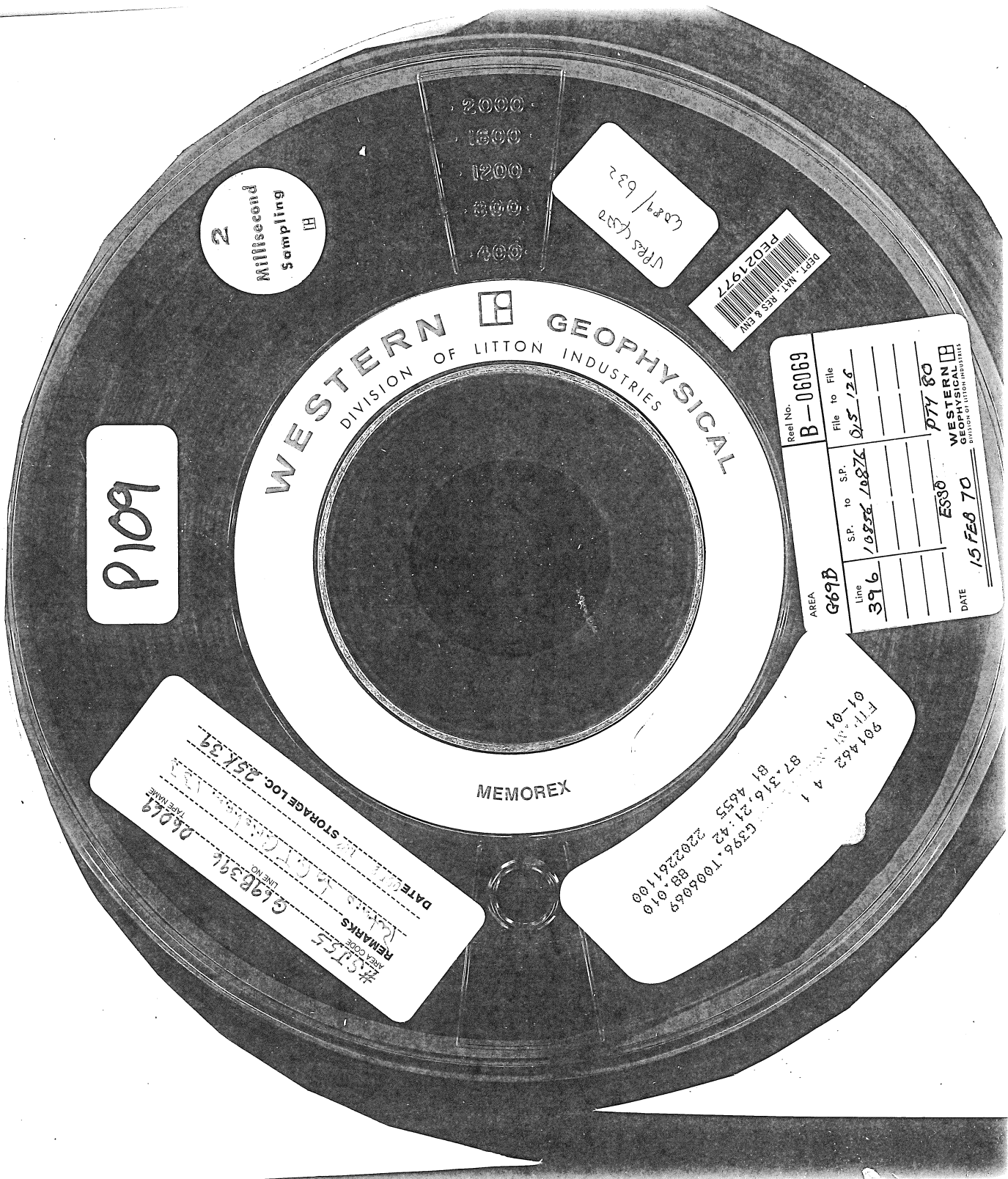


77963418



2000  
1600  
1200  
800  
400

2  
Millisecond  
Sampling  
H

UPRS 432  
0829/632

DEPT. MAT. RES. & ENV.  
PE021977

P109

WESTERN  GEOPHYSICAL  
DIVISION OF LITTON INDUSTRIES

Real No.	B-06069	
File to File	05/126	
SP. to SP.	10836 10876	
Line	396	
AREA	G69D	
DATE	15 FEB 70	
	ES80	
	PT7 80	

WESTERN  
GEOPHYSICAL  
DIVISION OF LITTON INDUSTRIES

MEMOREX

#5755  
REMARKS  
AREA CODE  
DATE  
LINE NO.  
LINE NAME  
G19B396  
06079  
STORAGE LOC. 25K39

901462  
4 1  
87.316  
81.4535  
6396.1008069  
88.010  
2202281100  
01-01