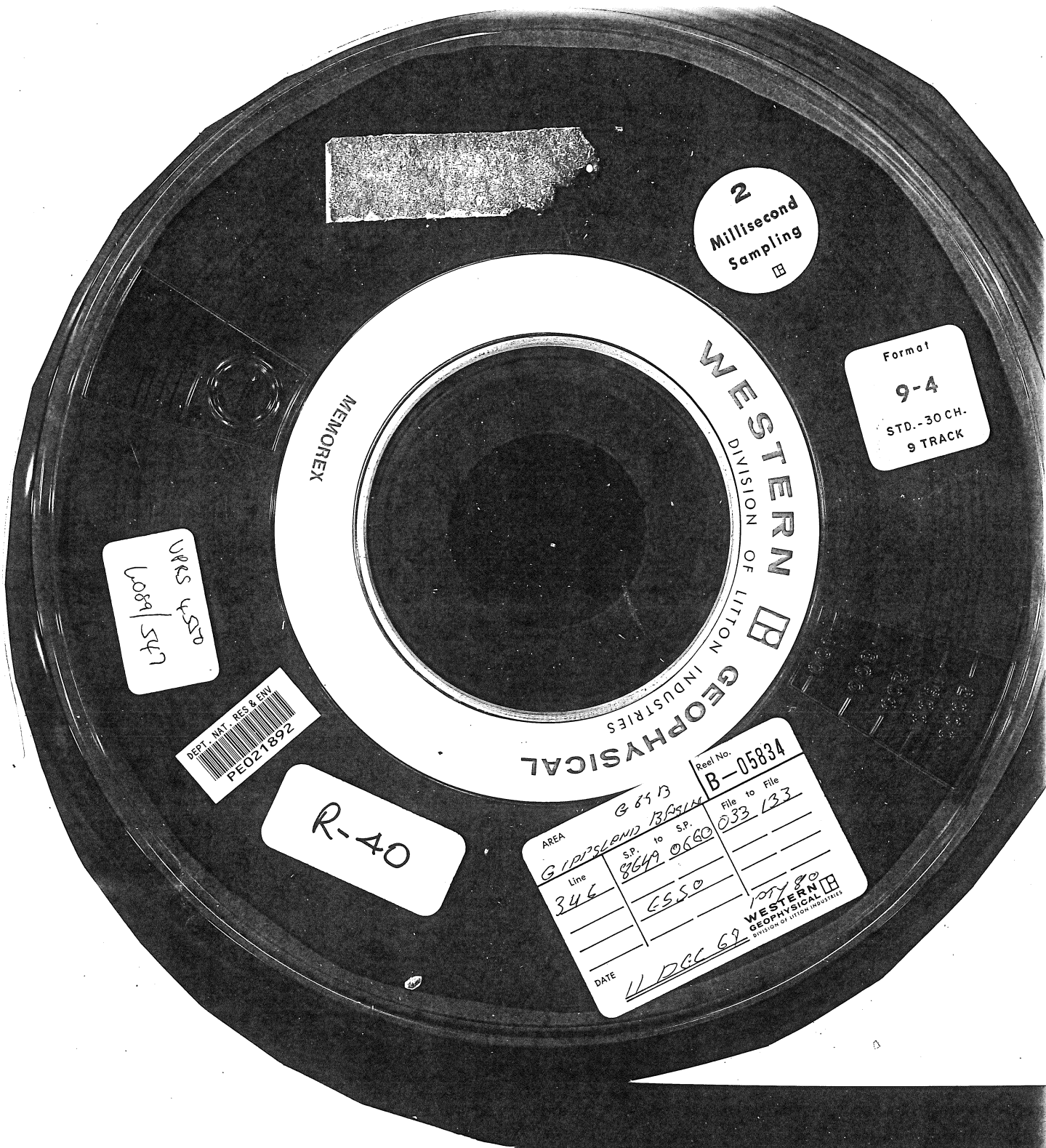


77963248



2
Millisecond
Sampling

Format
9-4
STD.-30 CH.
9 TRACK

URS 4550
6089/547

DEPT. MAT. RES & ENV
PEO21892

R-40

AREA	G 85 B		Real No.	B-05834
Line	8649	to S.P.	File to File	033 133
DATE	10/27/80		WESTERN GEOPHYSICAL DIVISION OF LITTON INDUSTRIES	