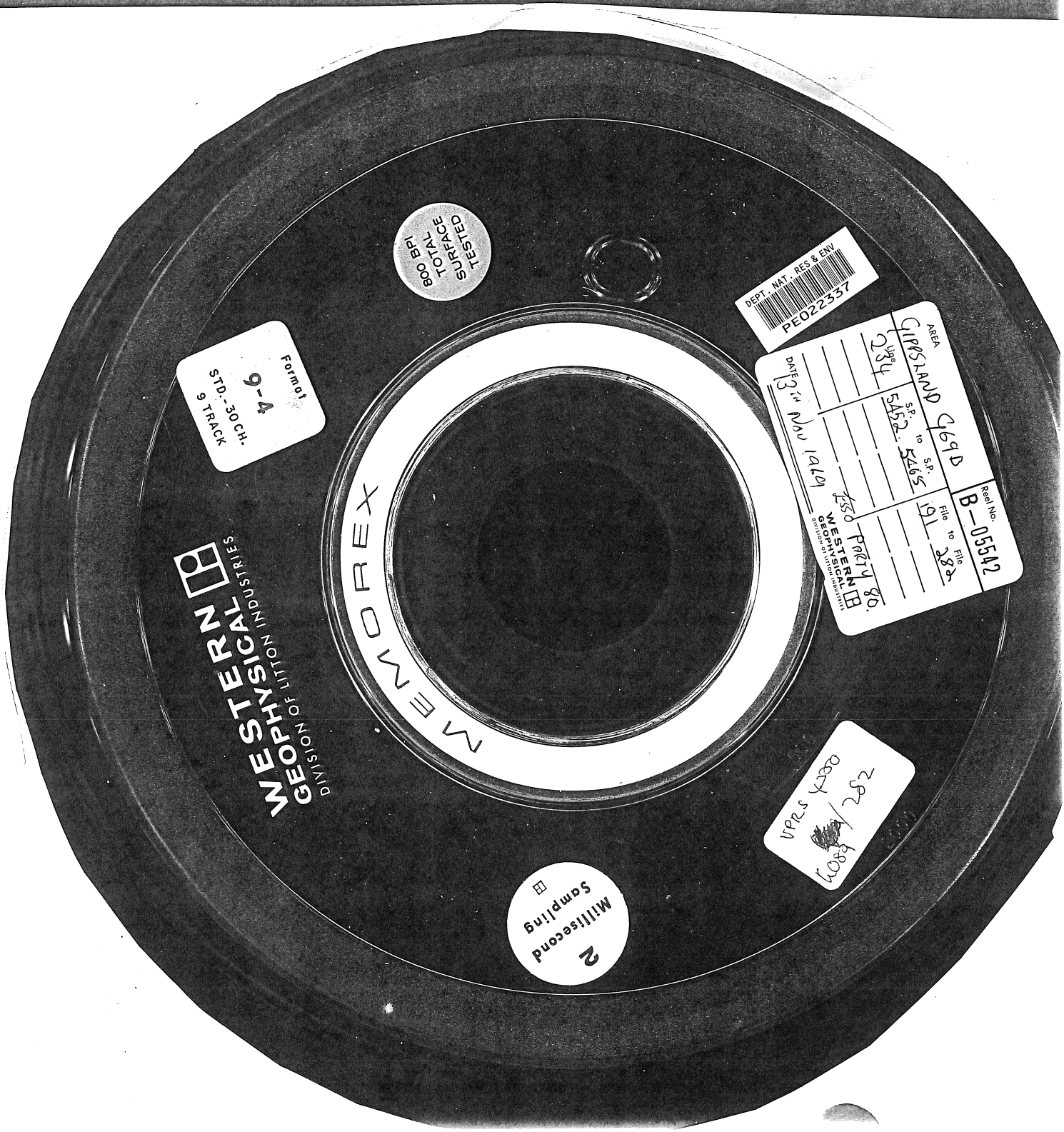


77963145



TESTED
TOTAL
SURFACE
BOB BPI

DEPT. NAT. RES & ENV
PE022337

Format
9-4
STD.-30 CH.
9 TRACK

DEPT. NAT. RES & ENV 311 NW 14th	AREA GIBSLAND 469D	Real No. B-05542
DATE 3/11/80	S.P. to S.P. 5452. 5465	File to File 191 282
WESTERN B GEOPHYSICAL	450 PACTY 80.	

WESTERN B
GEOPHYSICAL
DIVISION OF LITTLE ROCK
INDUSTRIAL

MEMOREX

VPES 4300
1089/282

2
Millisecond
Sampling