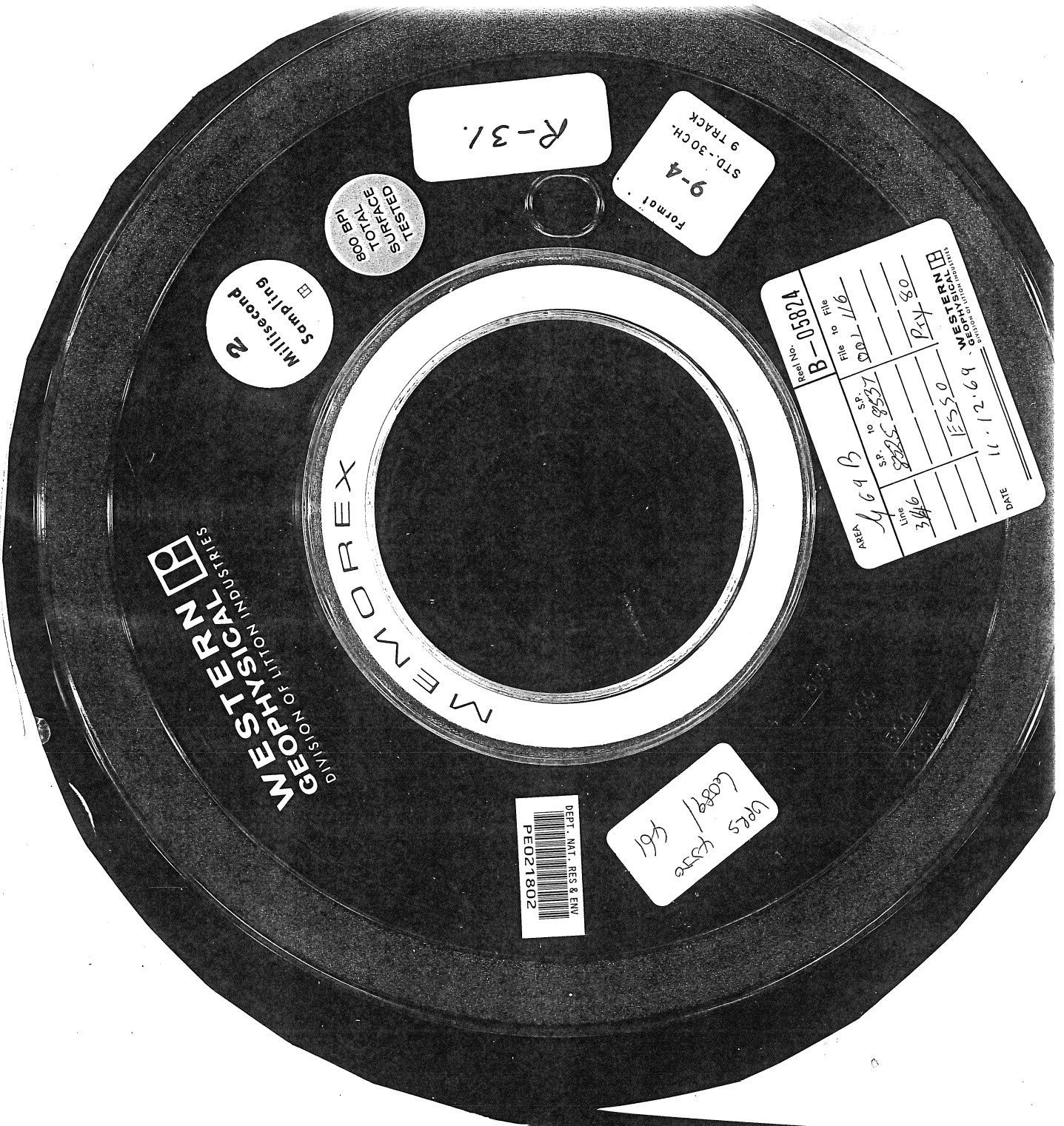


77961345



R-31.

9-4  
STD.-30CH.  
9 TRACK  
Format

80 BPI  
TESTED  
SURFACE  
TOTAL

Millisecond  
Sampling  
2

MEMDREX

WESTERN  
GEOPHYSICAL  
DIVISION OF LITTON INDUSTRIES

|      |      |            |      |         |     |                               |
|------|------|------------|------|---------|-----|-------------------------------|
| AREA | 464B | SP. to SP. | 8537 | File to | 116 | WESTERN<br>GEOPHYSICAL        |
| Line | 346  |            |      |         |     | DIVISION OF LITTON INDUSTRIES |
|      |      |            |      |         |     | DATE                          |
|      |      |            |      |         |     | 11.12.69                      |
|      |      |            |      |         |     | 123827                        |
|      |      |            |      |         |     | B-00                          |

DEPT. NAT. RES. & ENV.  
PE021802

6088/461  
4945 4536