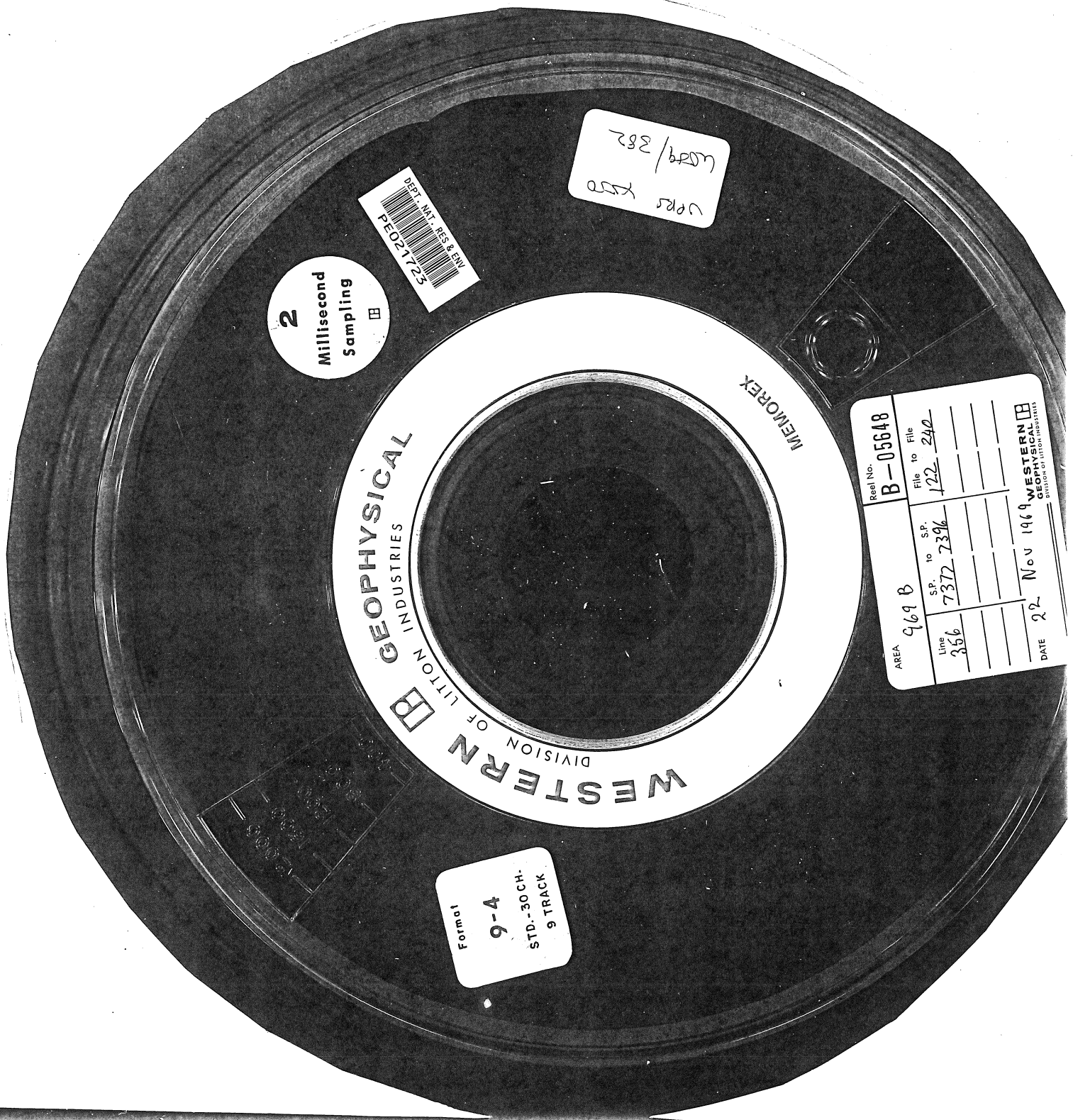


77391188



WESTERN
DIVISION OF LITTON INDUSTRIES
GEOPHYSICAL
INDUSTRIES
MEMOREX

2
Millisecond
Sampling

DEPT. NAT. RES. & ENV.
PED21725

URS
K550
US29/382

Format
9-4
STD.-30 CH.
9 TRACK

AREA	969 B	Reel No.	B-05618
Line	356	File to File	122-240
S.P.	7372-7396		
DATE	22 Nov 1969		

WESTERN
GEOPHYSICAL INDUSTRIES
DIVISION OF LITTON INDUSTRIES