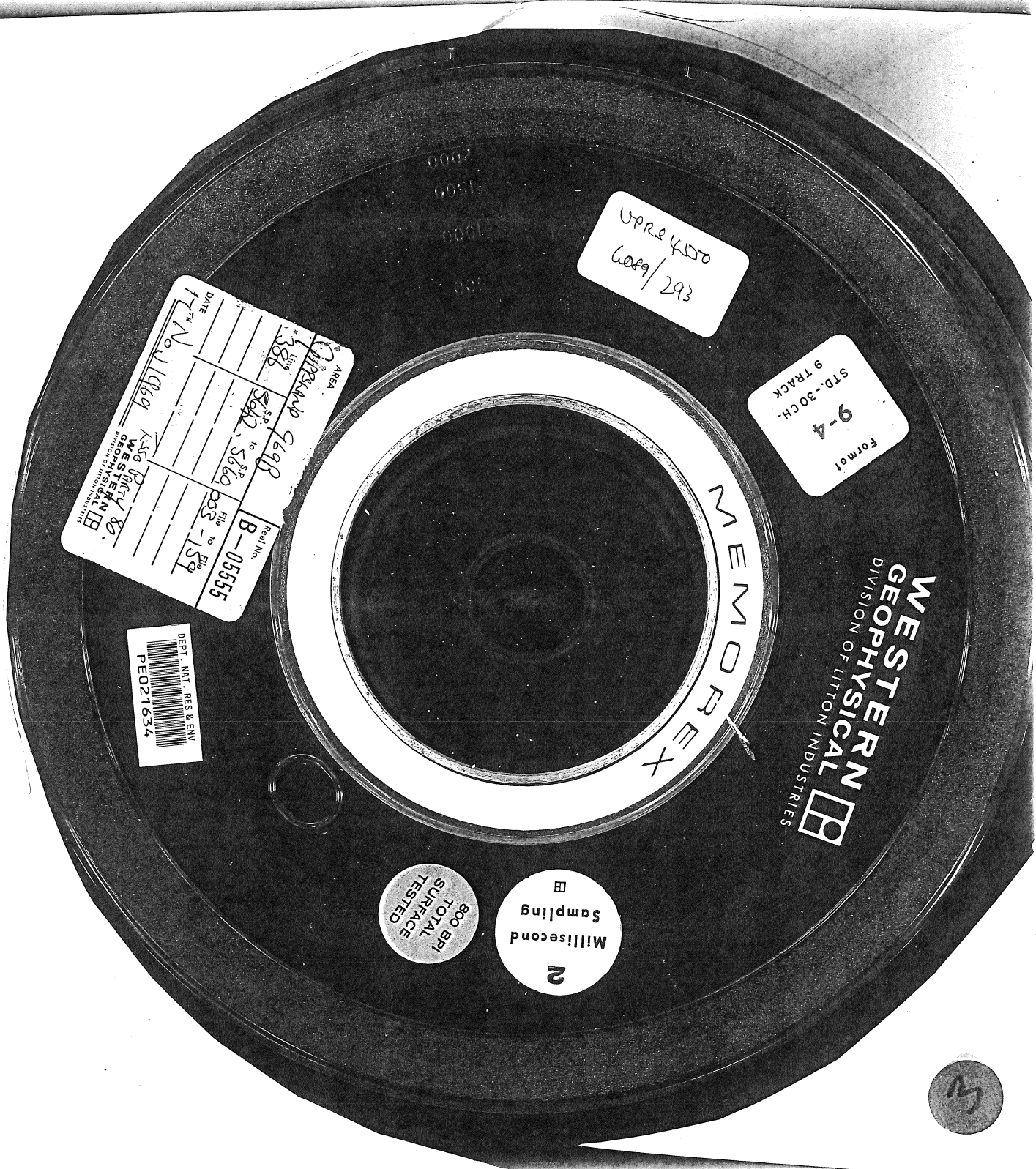


77961010



UPRE KSDO
6089/293

Form 01
9-4
STD.-30 CH.
9 TRACK

DATE	17 th	Area	388
LINE	No. 11969	Area	388
WESTERN GEOPHYSICAL DIVISION OF LITTON INDUSTRIES	5660 to 5669	Area	388
WESTERN GEOPHYSICAL DIVISION OF LITTON INDUSTRIES	833-159	Area	388
Real No.	B-05555	Area	388

DEPT. NAT. RES & ENV
PE021634

MEMOREX

WESTERN
GEOPHYSICAL
DIVISION OF LITTON INDUSTRIES

800 BPI
TOTAL
SURFACE
TESTED

Millisecond
Sampling
2

5