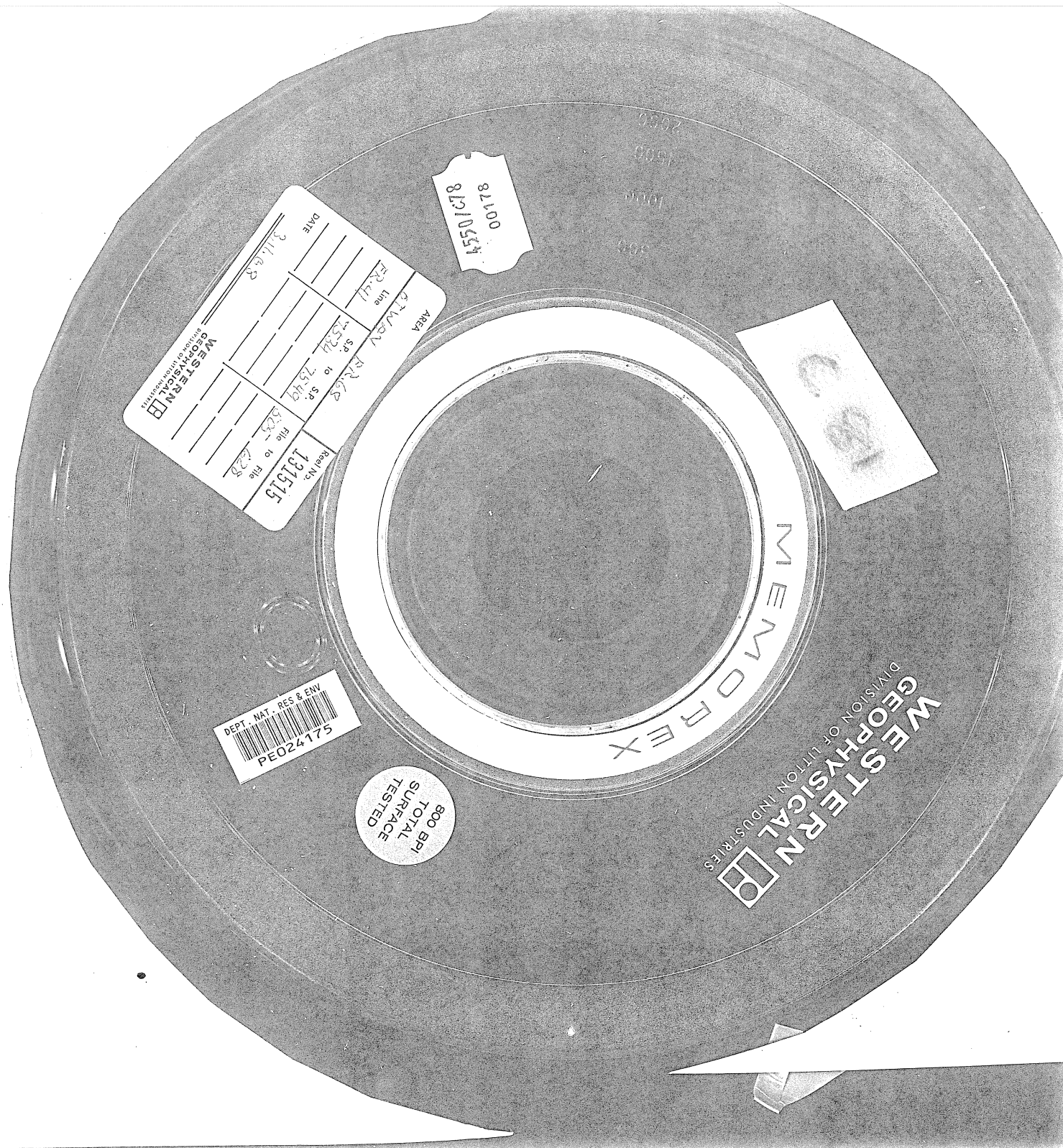


567358



81100  
45501078

AREA

Line (1)

SP 131515 to SP 131515

DATE 3/1/68

File 131515 to File 131515

WESTERN GEOPHYSICAL  
DIVISION OF LITTON INDUSTRIES



DEPT. MAT. RES & ENV.

PE024175

800 BPI  
TOTAL  
SURFACE  
TESTED

MEMOREX

WESTERN GEOPHYSICAL  
DIVISION OF LITTON INDUSTRIES