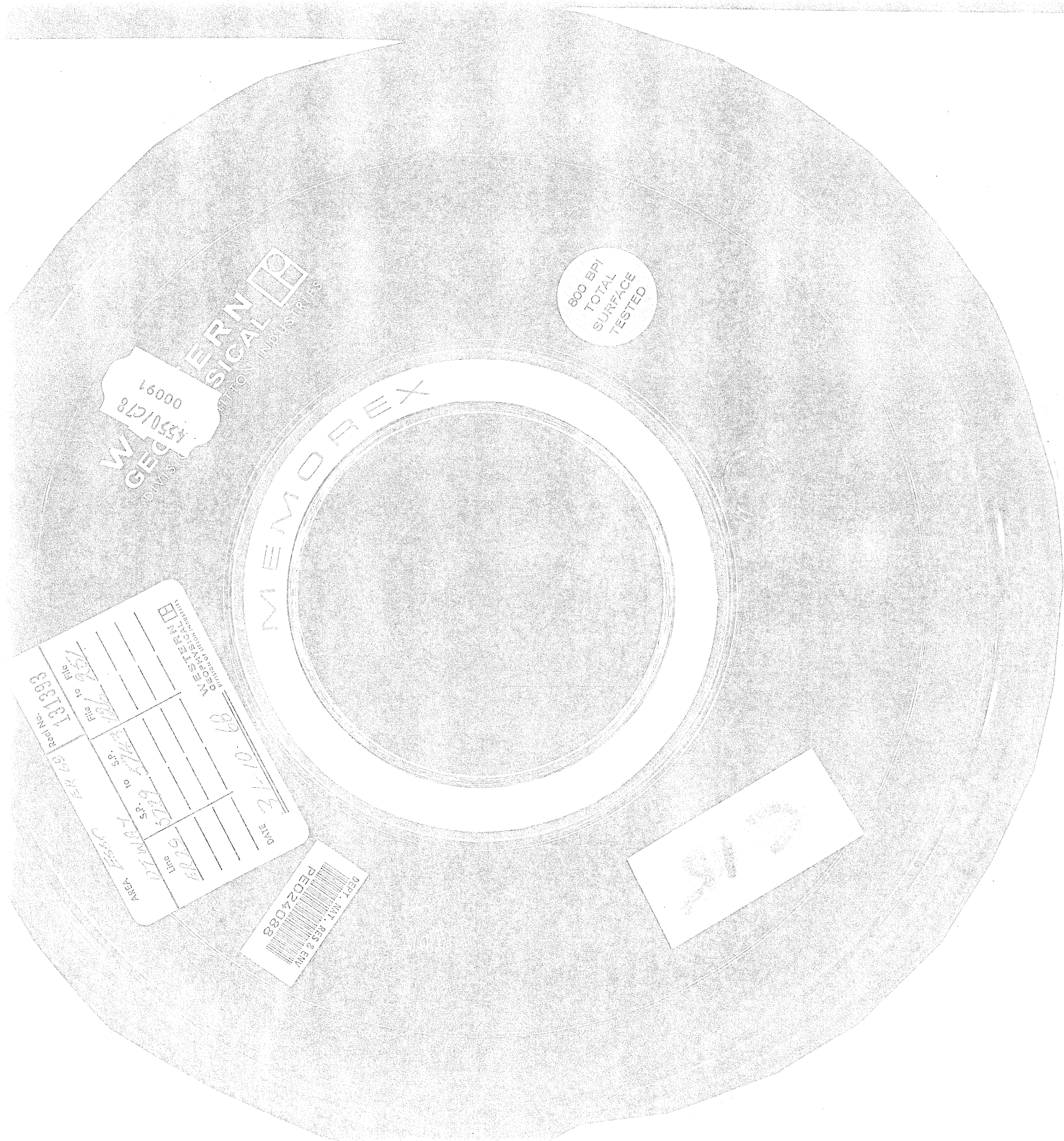


567184



WESTERN PHYSICAL
16000
4550/178
00091

800 BPI
TOTAL
SURFACE
TESTED

MEMOREX

AREA	LINE	S. 1	S. 2	S. 3	S. 4	S. 5	S. 6	S. 7	S. 8	S. 9	S. 10	DATE	FILE NO.
100	100											3/10/88	15

WESTERN PHYSICAL
DEPT. NO. 1, RESS. 2, ENV. REQ24088

DEPT. NO. 1, RESS. 2, ENV.
REQ24088

15