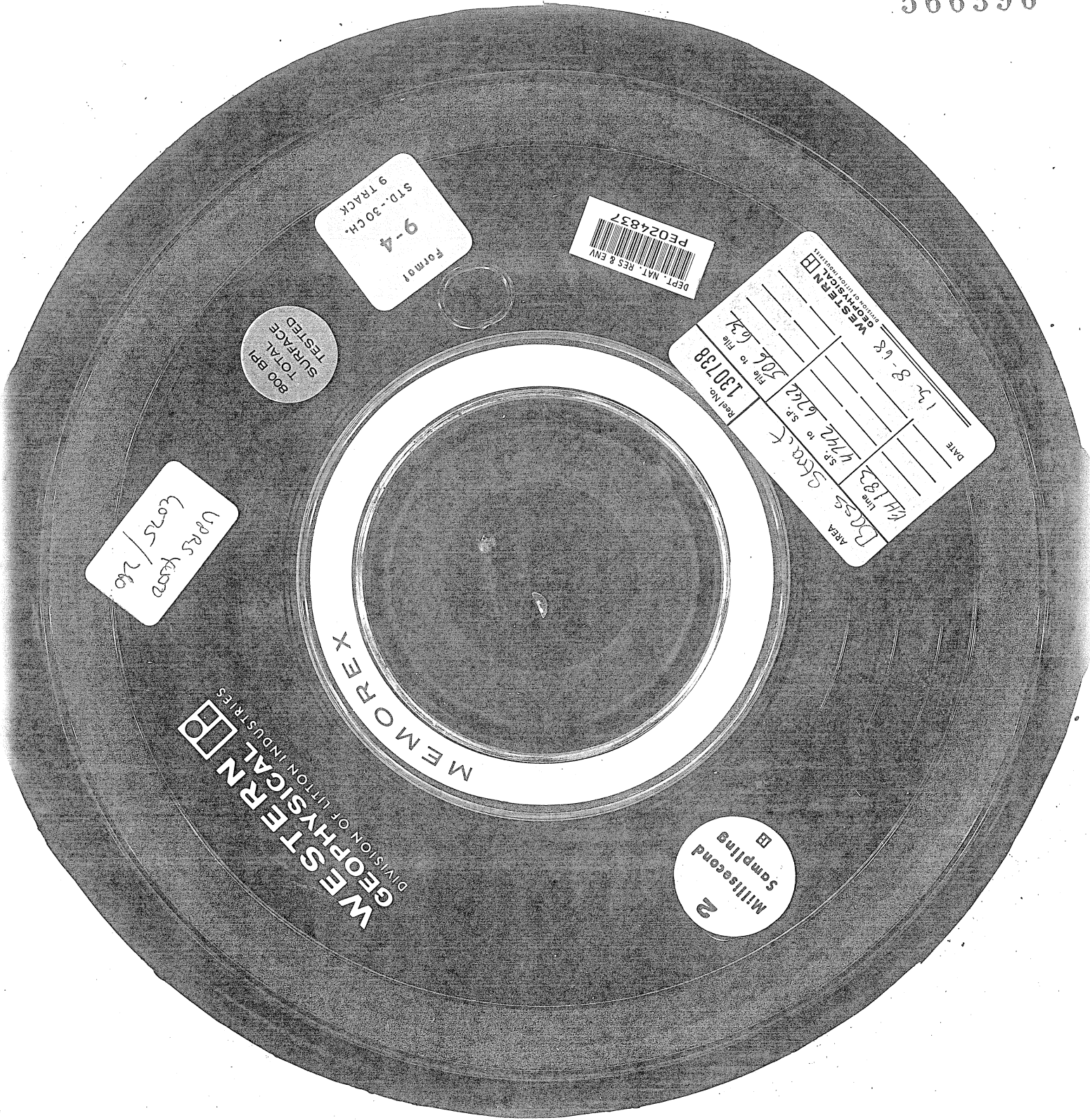


566396



Formal  
9-4  
STD.-30CH.  
9 TRACK

DEPT. NAT. RES & ENV  
PE024837

800 BPL  
TOTAL  
SURFACE  
TESTED

DATE 12-8-68	
WESTERN GEOPHYSICAL DIVISION OF UNION INDUSTRIES	
AREA D255	LINE # 182
SP. TO 1/42	SP. FROM 2/42
SP. TO 5/42	SP. FROM 7/42
SP. TO 7/42	SP. FROM 7/42
Real No. 130738	File No. 79
Section	File

Vars 4000  
4025/26

WESTERN  
GEOPHYSICAL  
DIVISION OF UNION INDUSTRIES

MEMOREX

2  
Millisecond  
Sampling