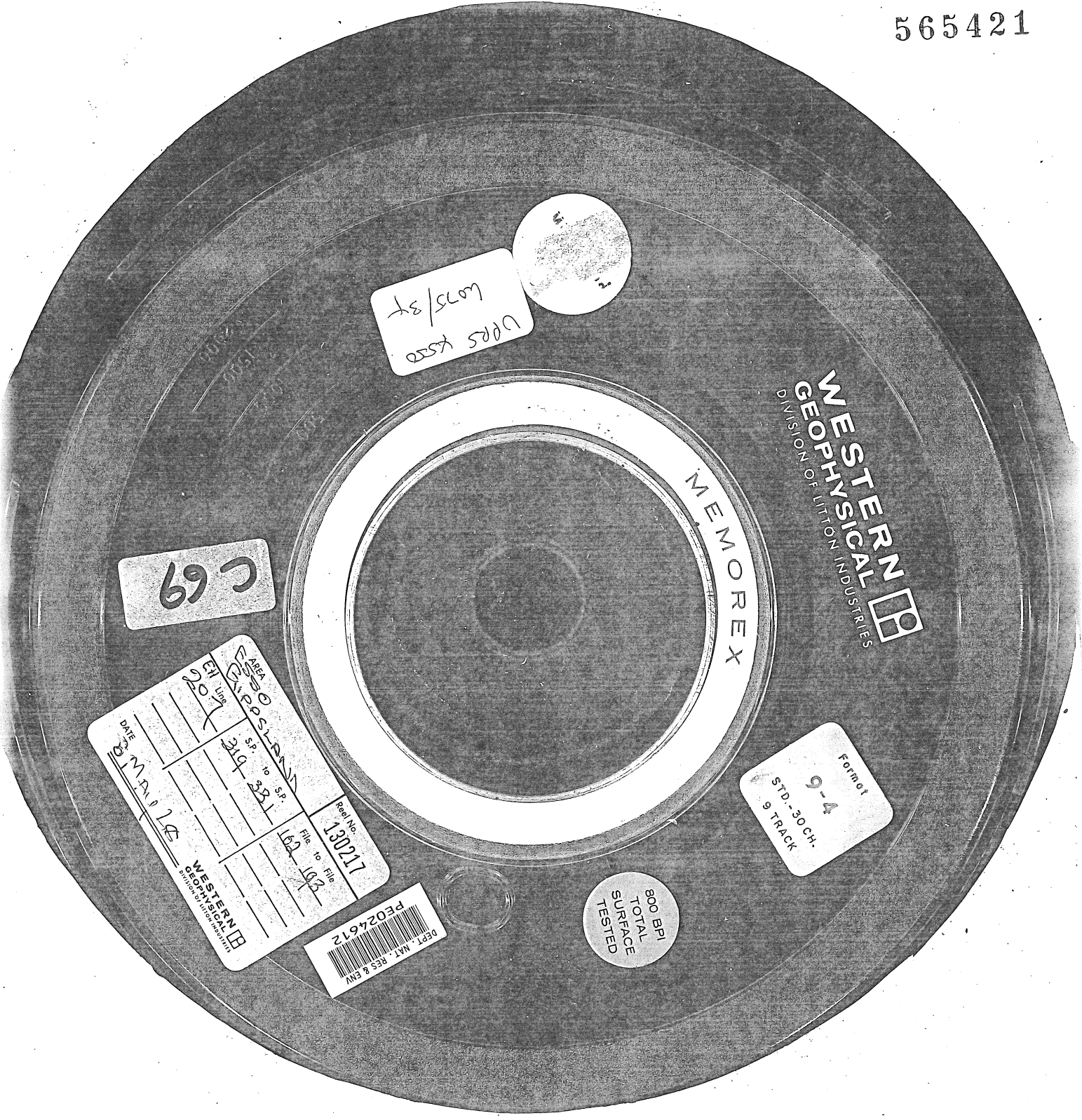


565421



VPR5 K500  
6075/34

2

69

**WESTERN GEOPHYSICAL**  
DIVISION OF LITTON INDUSTRIES

MEMOREX

Format  
9-4  
STD-30 CH.  
9 TRACK

DATE	AREA	FILE NO.	REEL NO.
3 MAR 74	PPS-100	100	130217
	LINE	FILE TO FILE	
	20	100	
	SP. TO SP.		
	310		
	331		

WESTERN GEOPHYSICAL  
DIVISION OF LITTON INDUSTRIES

DEPT. MAT. RES & ENV  
PE024612

800 BPI  
TOTAL  
SURFACE  
TESTED