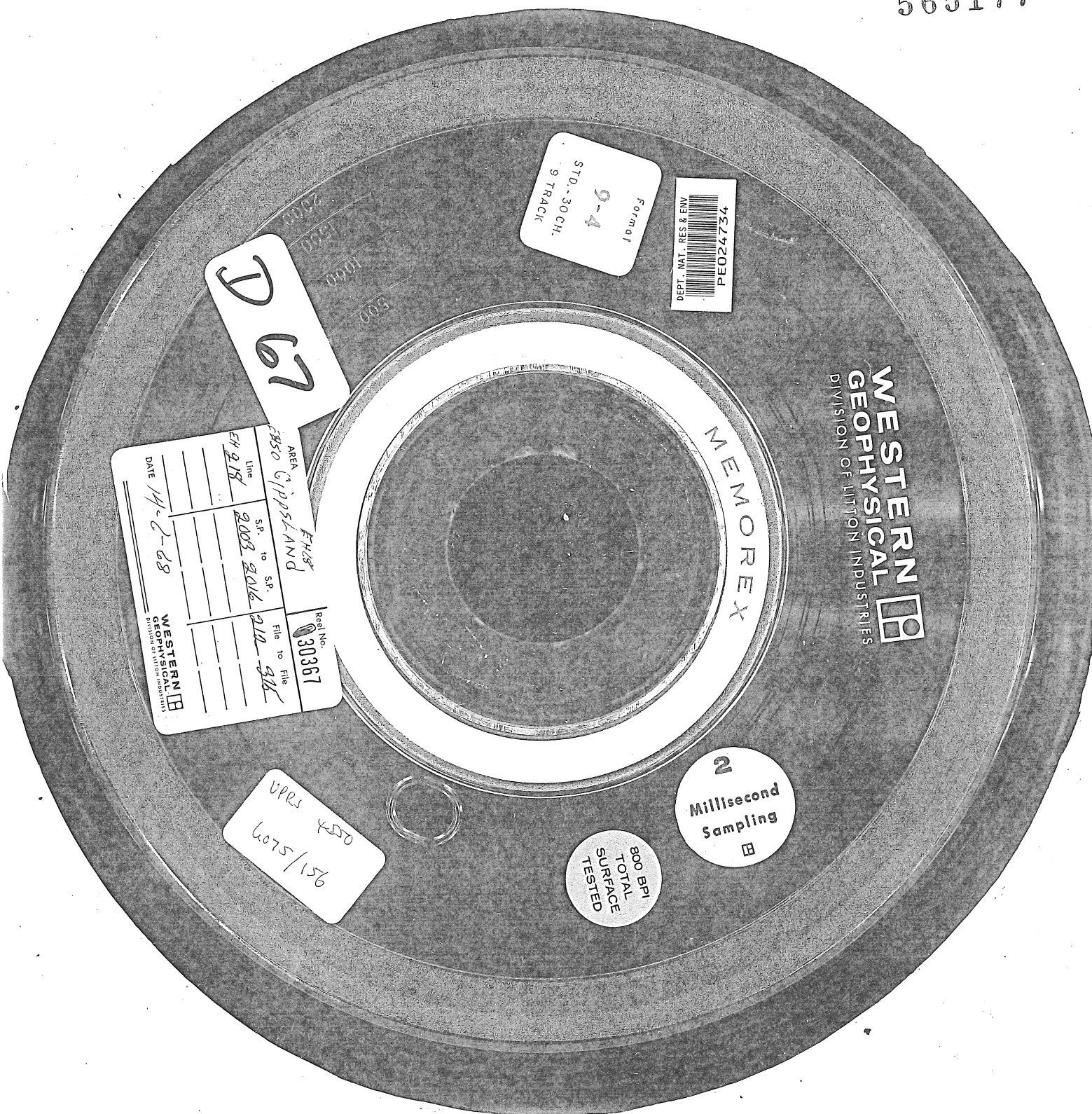


565177



AREA		FHS		Reel No
3850 CIPPSLAND				30367
Line	S.P. to S.P.	File to File		
218	2003 2016	210-218		
DATE	14-2-68			
WESTERN GEOPHYSICAL DIVISION OF LITTON INDUSTRIES				

Format
9-4
STD.-30 CH.
9 TRACK

DEPT. NAT. RES. & ENV
PE024734

MEMOREX

WESTERN
GEOPHYSICAL
DIVISION OF LITTON INDUSTRIES

VPRS 450
6075/156

800 BPI
TOTAL
SURFACE
TESTED

2
Millisecond
Sampling