

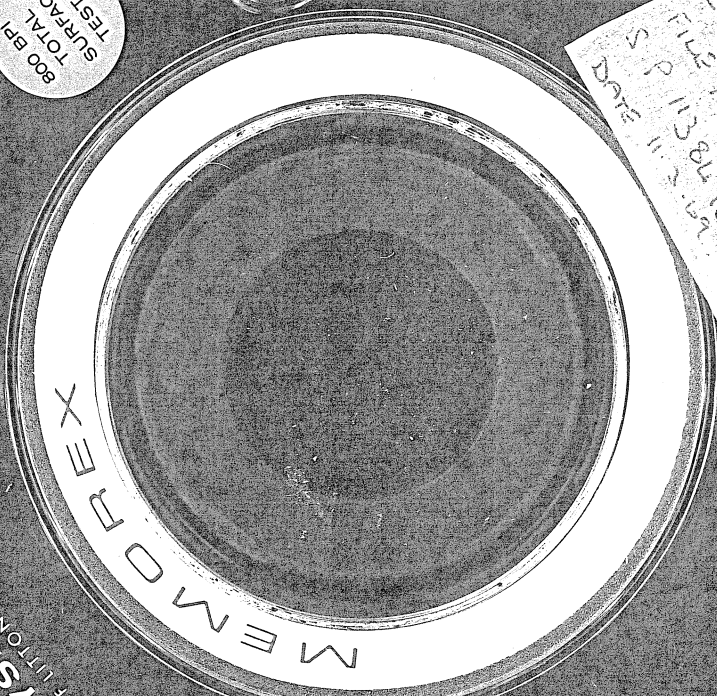
572115

2  
Millisecond  
Sampling

DEPT. NAT. RES. & ENV.  
FE027632

800 BR  
TOTAL  
SURFACE  
TESTED

ESD GIPPLAND  
Q&A 49072  
Line 8499-1572  
FILE 140 To 273  
S P 1138L To 1140  
DATE 11-2-79



WESTERN  
PHYSICAL  
INDUSTRIES

VPRS 4550  
6091/498