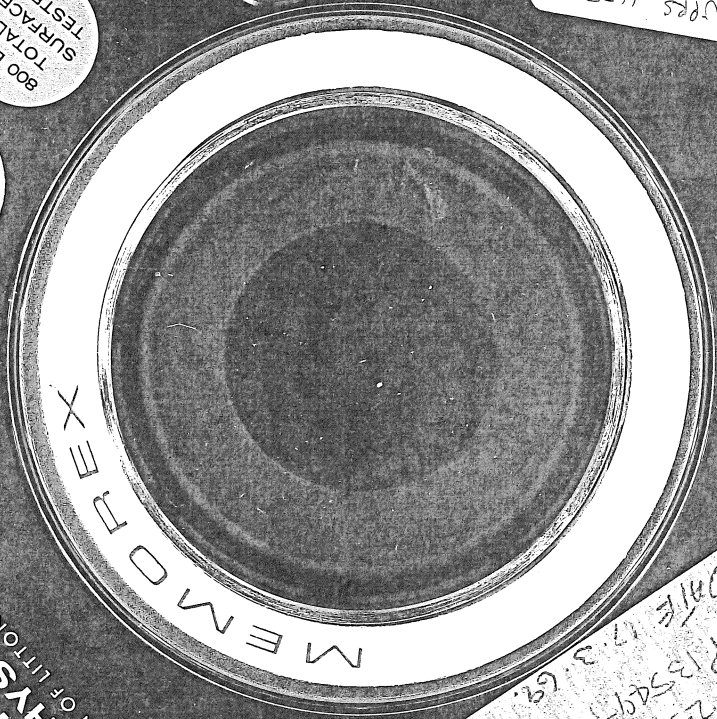


571271

UPRS 4550  
6/8/1/644

800 BP  
TOTAL  
SURFACE  
TESTED

2  
Millisecond  
Sampling



WESTERN  
GEOPHYSICAL  
DIVISION OF LITTON INDUSTRIES

DEPT. NAT. RES. & ENV.  
PE027777

ES50 & PIPESLAND  
REEL 49233  
LINE 66000 TO 682  
FILE 256 TO 282  
SPRINGS TO 13565  
DATE 12.3.69