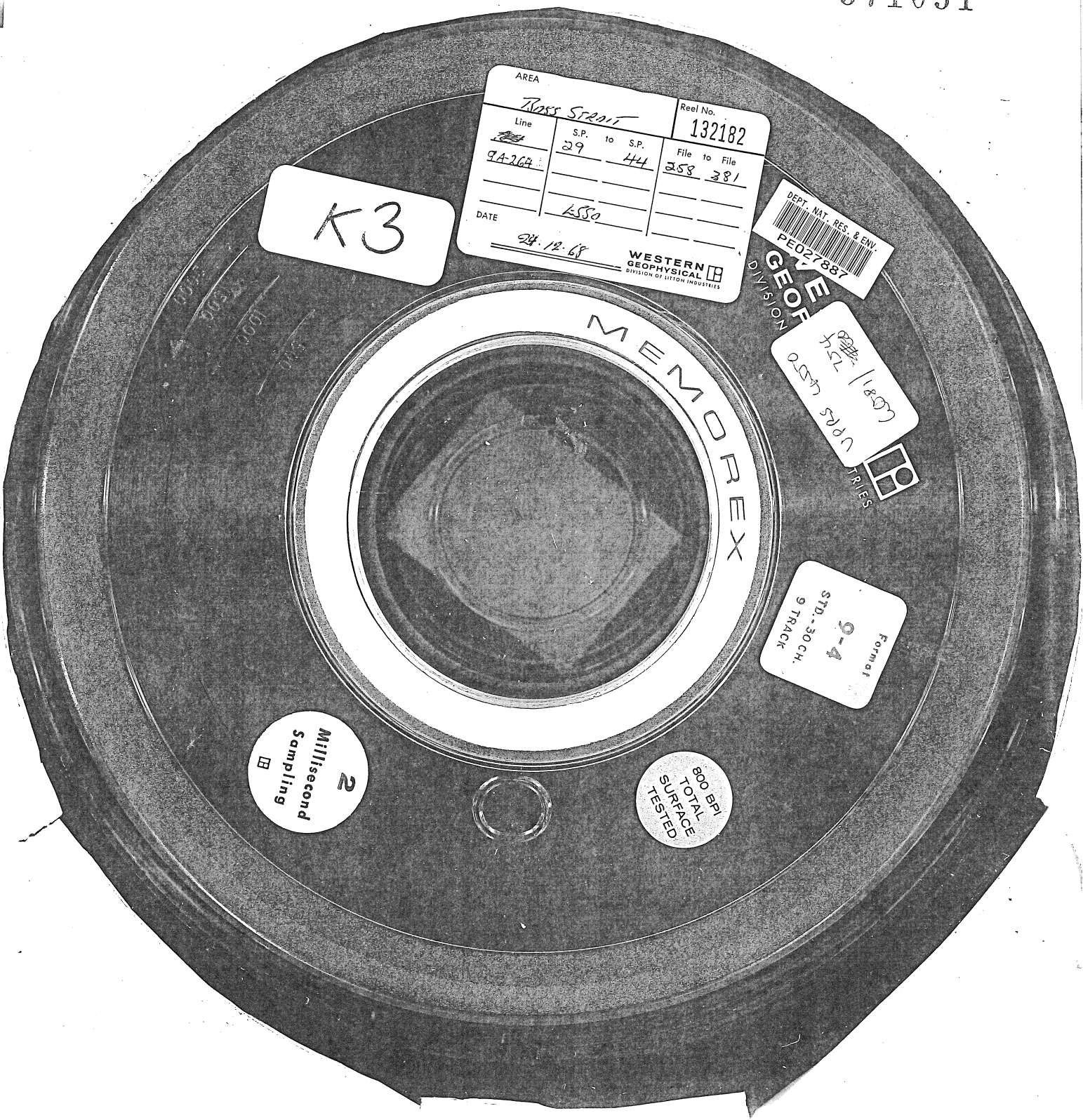


571051



K3

AREA <i>ROSS STRAIT</i>		Reel No. 132182
Line <i>9A-264</i>	S.P. to S.P. <i>29 to 44</i>	File to File <i>358 381</i>
DATE <i>24.12.68</i>	<i>ESSO</i>	

WESTERN
GEOPHYSICAL
DIVISION OF LITTON INDUSTRIES

DEPT. NAT. RES. & ENV.
PEO 27887

DEPT. NAT. RES. & ENV.
PEO 27887

8800-11207
7572
0520 570

GEOELECTRIC
DIVISION

Form #
9-4
STD.-30 CH.
9 TRACK

2
Millisecond
Sampling

800 BPI
TOTAL
SURFACE
TESTED