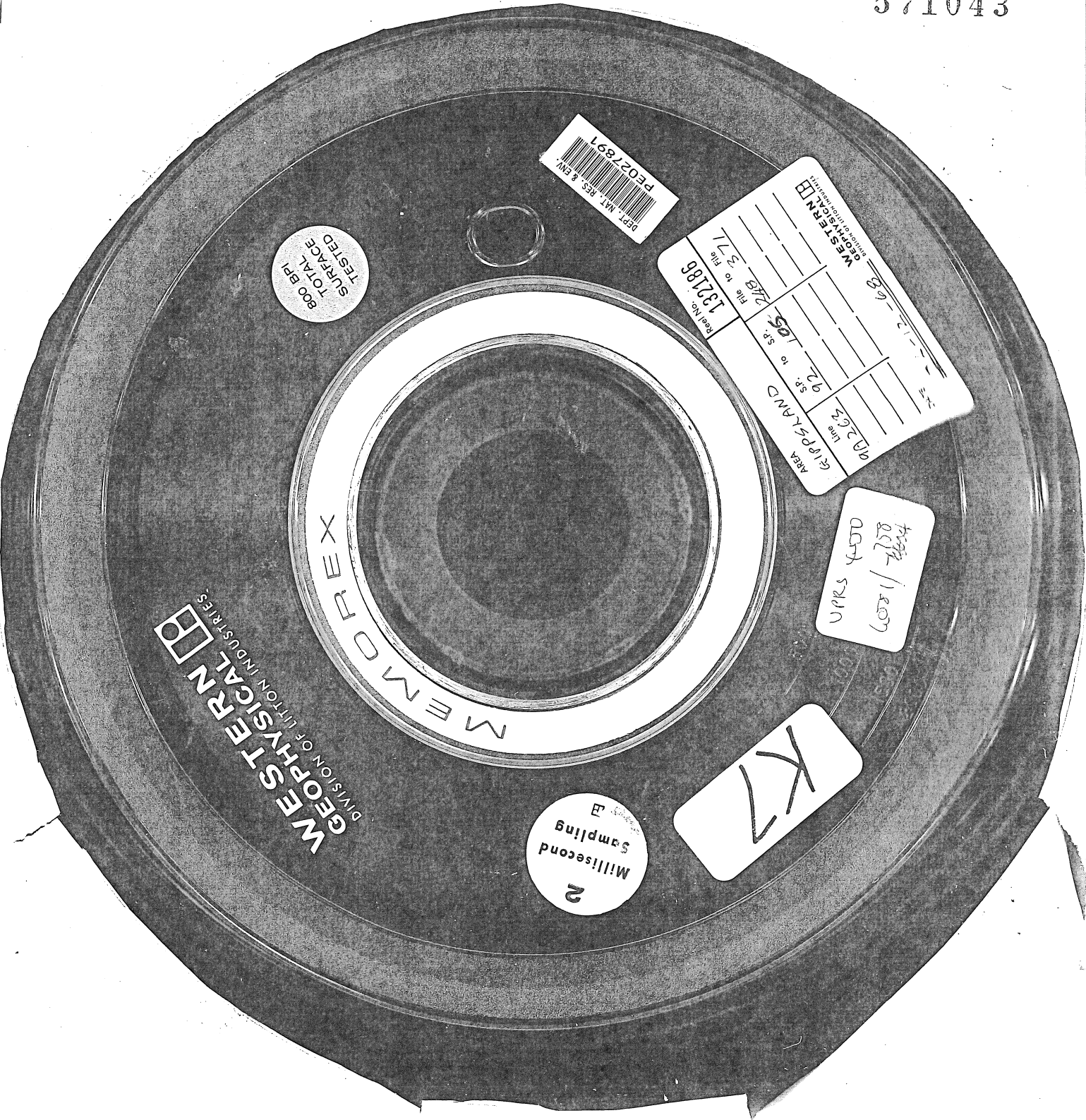


571043



800 BPI
TOTAL
SURFACE
TESTED

DEPT. M.T. RES. & ENV.
PE027891

WESTERN GEOPHYSICAL DIVISION OF LITTON INDUSTRIES
AREA GRAND
Line 92.662
SP. to 05
SP. to 2489
File to 371
Red No. 132186

VIKRS 4500
11/15/07

K2

Millisecond
Sampling
2

WESTERN GEOPHYSICAL
DIVISION OF LITTON INDUSTRIES

MEMOREX