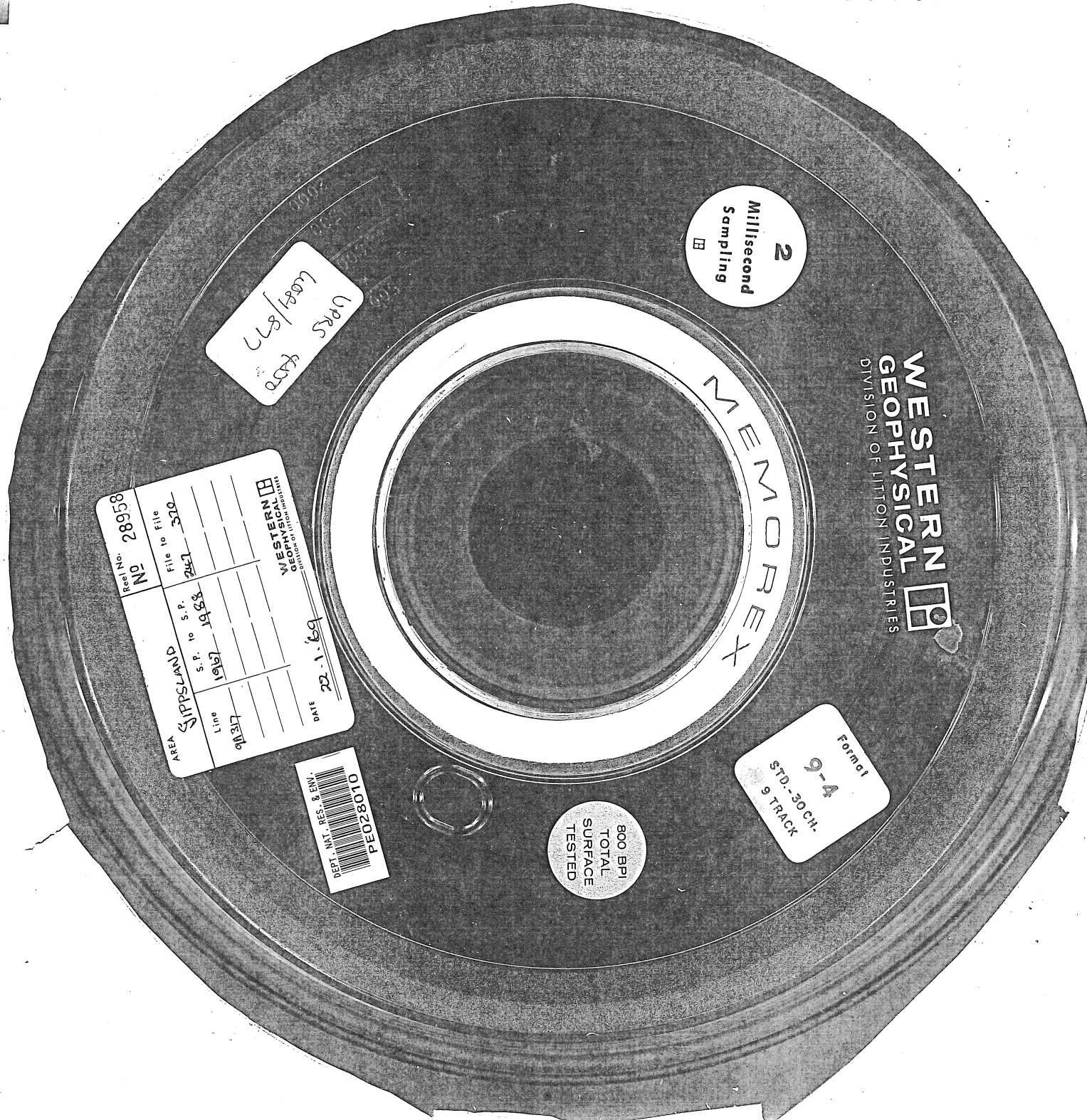


570325



2  
Millisecond  
Sampling

WRS  
4000  
6/21/87

Rec'd No. 28958

AREA SIPPISLAND

No. 10	File to File
2451	310
S.P. to S.P.	
1988	
Line	
1210	

DATE 22. 1. 89

WESTERN  
GEOPHYSICAL  
DIVISION OF LITTON INDUSTRIES

DEPT. INT. RES. & ENV.  
PE028010

800 (BPI)  
TOTAL  
SURFACE  
TESTED

Form 1  
9-4  
STD.-30CH-  
9 TRACK

WESTERN  
GEOPHYSICAL  
DIVISION OF LITTON INDUSTRIES

MEMOREX