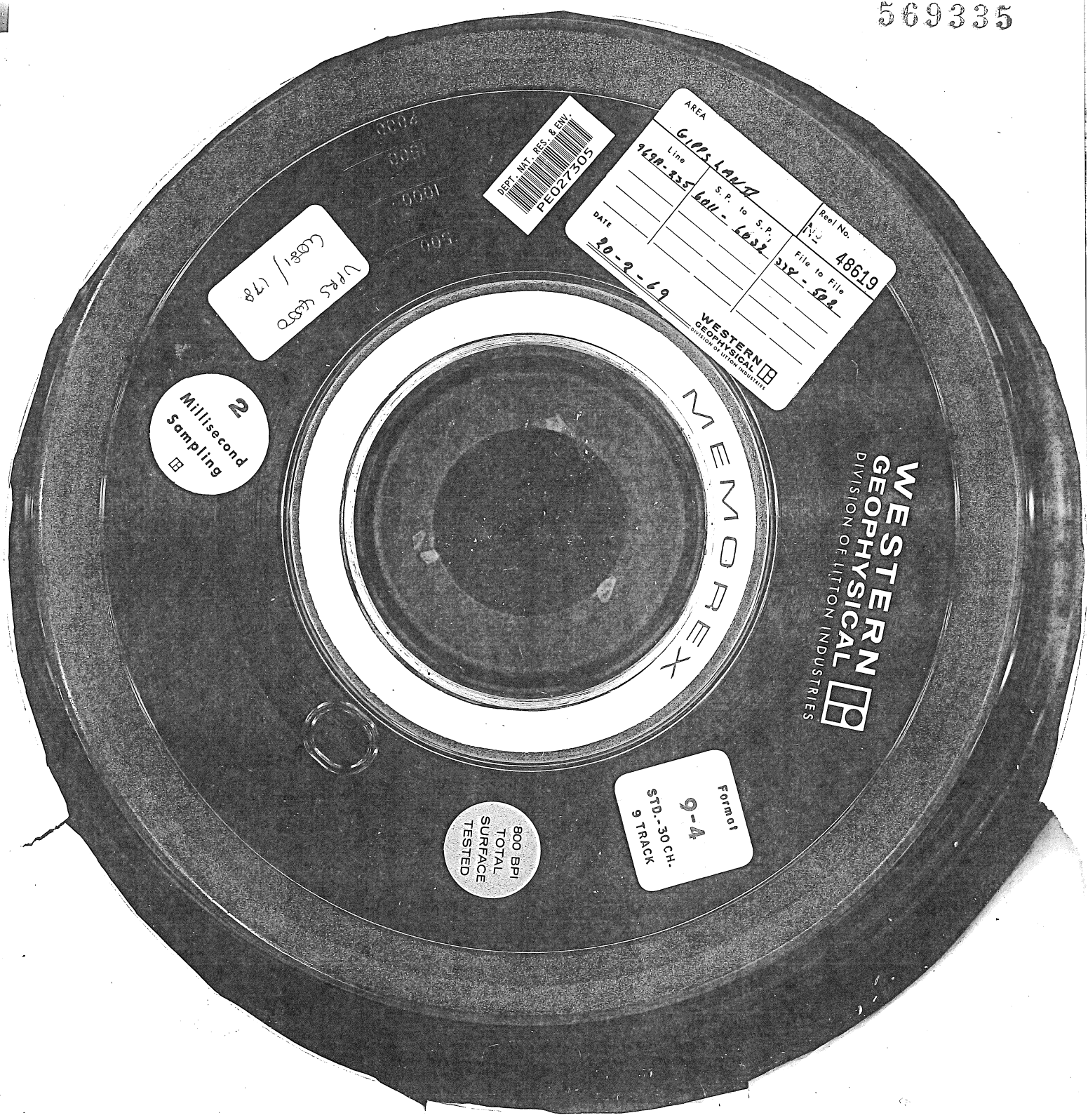


569335



VPRS 4580
6081/178

DEPT. MT. RES. & ENV.
PEO27303

AREA	GIPS LAKE		Reel No.	48619
Line	9690-835	S.P. to S.P.	File to File	328-522
DATE	20-2-69	601-632		

WESTERN
GEOPHYSICAL
DIVISION OF LITTON INDUSTRIES

2
Millisecond
Sampling

MEMOREX
WESTERN
GEOPHYSICAL
DIVISION OF LITTON INDUSTRIES

800 BPI
TOTAL
SURFACE
TESTED

Formal
9-4
STD.-30CH-
9 TRACK