

DEPT. NAT. RES & ENV



PE012669

J2003VICL13001:1482:4

# Schlumberger

## Schlumberger

Wellsite Product  
MWD/LWD

06 JUN 2005

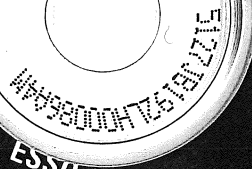
06 JUN 2005

Petroleum Development

©2003 Schlumberger  
All rights reserved.  
Schlumberger disclaimer included.

Product name  
PowerPulse\*  
Gamma Ray  
PE 012 6 6 9

J2003VICL13001:1482:4



Company **ESSO Australia Pty. Ltd.**  
Field **Bream A**  
Well **BMA A10A**  
Location **Australia, Victoria**  
Date **20-May-2005**  
Run **1 to 2, 2258-3381m MD**  
Reference **ASQ-05-06**