



GEOGRAM

(Synthetic Seismogram)

Company: ESSO AUSTRALIA LTD
 Well: SWEETLIPS - 1
 Field: WILDCAT
 Country: AUSTRALIA
 Reference No: 56472 Interval: 185000 to 800000
 Date Logged: 10/8/89 Date Processed: 14/9/89
 Location: 038 06'47.30" S 148 02'08.66" E
 Elevations: KB: 2100 DF: 2070 GL: -5200
 Permanent Datum: MSL Depth Units: METRES

LOG INFORMATION
 FIELD RECORDING Engineer: H. HENOPA Location: Program Version: 322
 COMPUTATION Analyst: ZKATELS Centre: SYD Barline: 161X3
 ELEVATION ABOVE MEAN SEA LEVEL
 Logging Datum: 2100
 Seismic Reference Datum: 000
 Sonic Calibration By Check Shots: YES Sonic Edited By Analyst: YES
 Two-Way Time Sample Interval: 2 ms Environment:

True Vertical Depth Corrections Applied:
 Source of True Vertical Depth Data:
 Maximum Hole Deviation: 0

Run	Date	Tool Type	Bit Size/ Depth	Casing Size/ Depth	Top Depth	Bottom Depth
VSP	Date	Gun Offset	Hydro Offset	Gun Elevation	Hydro Elevation	Gun Admin
2	10-08-89	45.0 M	45.0	3.0 M BELOW SPD	15 M BELOW SPD	0

Equal time slice model of horizontal plane layers.
 Plane acoustic waves at normal incidence.
 No intrinsic attenuation.

POLARITY
 An upgoing wave, reflected by an increase in acoustic impedance with depth, is displayed as a white trough under normal polarity.

SIGNATURES
 All signatures displayed in the Geogram results correspond to a wavelet convolved with a reflection coefficient of -0.5 (A decrease in acoustic impedance with depth).

REMARKS

The well name, location and borehole reference data were furnished by the customer.

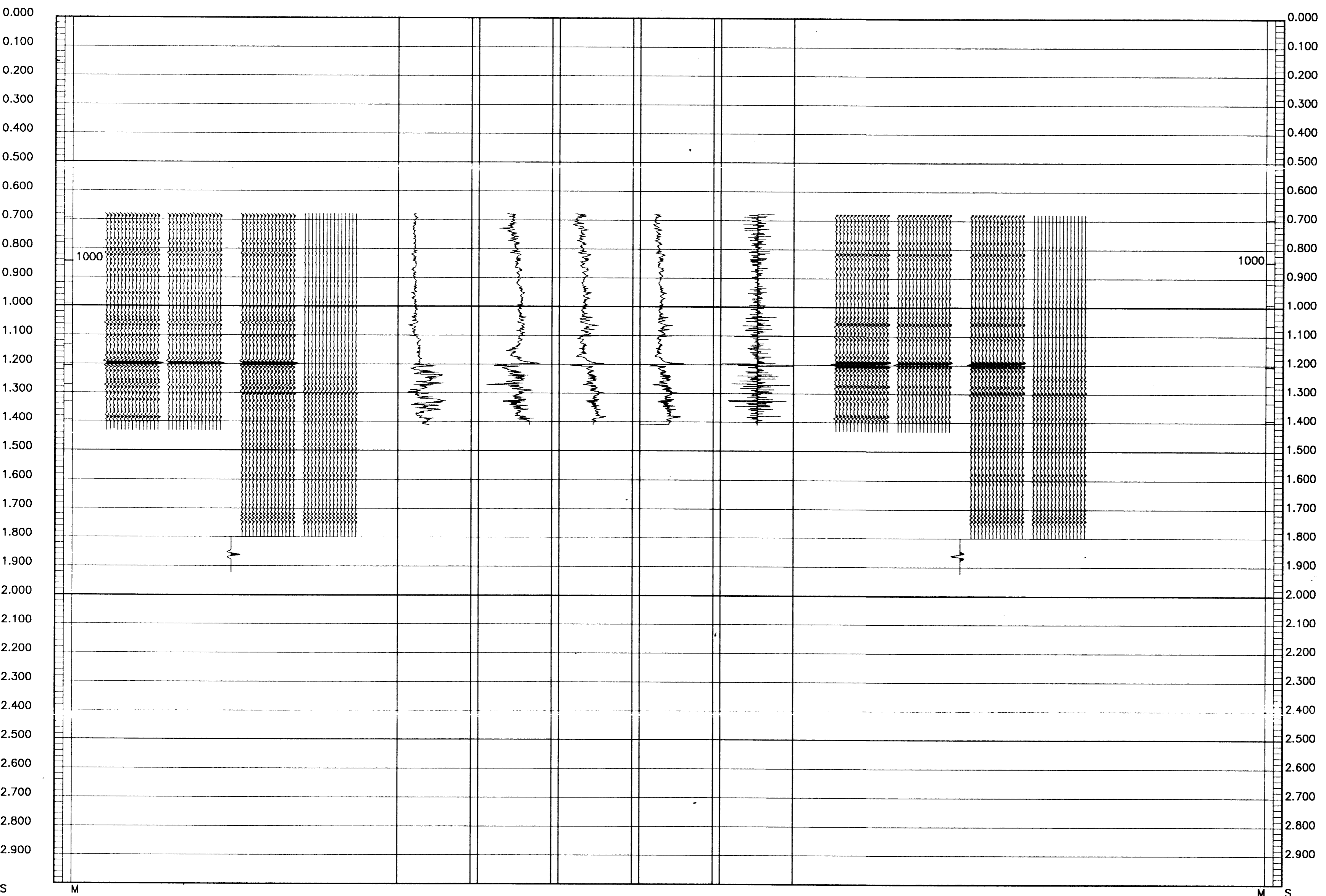
All interpretations are opinions based on inferences from electrical or other measurements and we cannot, and do not guarantee the accuracy or correctness of any interpretations, and we shall not, except in the case of gross or willful negligence on our part, be liable or responsible for any loss, costs, damages or expenses incurred or sustained by anyone resulting from any interpretations made by any of our officers, agents or employees. These interpretations are also subject to Clause 4 of our General Terms and Conditions as set out in our current Price Schedule.

CLIENT = ESSO AUSTRALIA LTD
 FIELD = WILDCAT
 WELL = SWEETLIPS - 1

** GEOGRAM **
 45 HERTZ ZERO PHASE
 RICKER WAVELET
 SWEETLIPS 1

MULTIPLES ONLY REVERSE POLARITY PRIMARYS AND MULTIPLES REVERSE POLARITY
PRIMARYS WITH TRANSMISSION LOSS REVERSE POLARITY
PRIMARYS REVERSE POLARITY
REFLECTION
ACOUSTIC IMPEDANCE
SONIC
DENSITY
GAMMA RAY
MULTIPLES ONLY NORMAL POLARITY
PRIMARYS AND MULTIPLES NORMAL POLARITY
PRIMARYS WITH TRANSMISSION LOSS NORMAL POLARITY
PRIMARYS NORMAL POLARITY

0.200
 -0.200
 50000.000 FSFC
 1000.000 FSFC
 100.000 US/M
 500.000 US/M
 2.800 G/C3
 1.800 G/C3
 200.000 GAPI
 0.000 GAPI



COMPANY ESSO AUSTRALIA LTD
 FIELD WILDCAT
 WELL SWEETLIPS - 1
 COUNTRY AUSTRALIA

