

SEISMIC CALIBRATION LOG

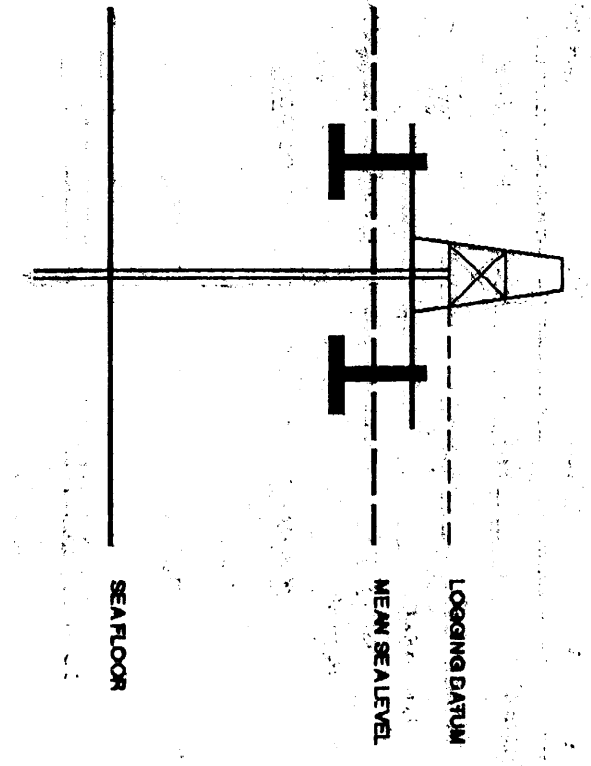
(Adjusted Continuous Velocity Log)



Company: SHELL AUSTRALIA
 Well: GUMMY #1
 Field: GIPSLAND BASIN
 Country: AUSTRALIA
 Well No: 56222
 Interval: 3583.0002 to 1200.00

Date Logged: 3 JUN 90
 Date Processed: 26/1/90
 Location: 38 17 S, 148 44 E
 Elevation: NS: 28.40 DF: 28.00 QL: -155.40
 Permanent Datum: MSL
 Depth Unit: METRES

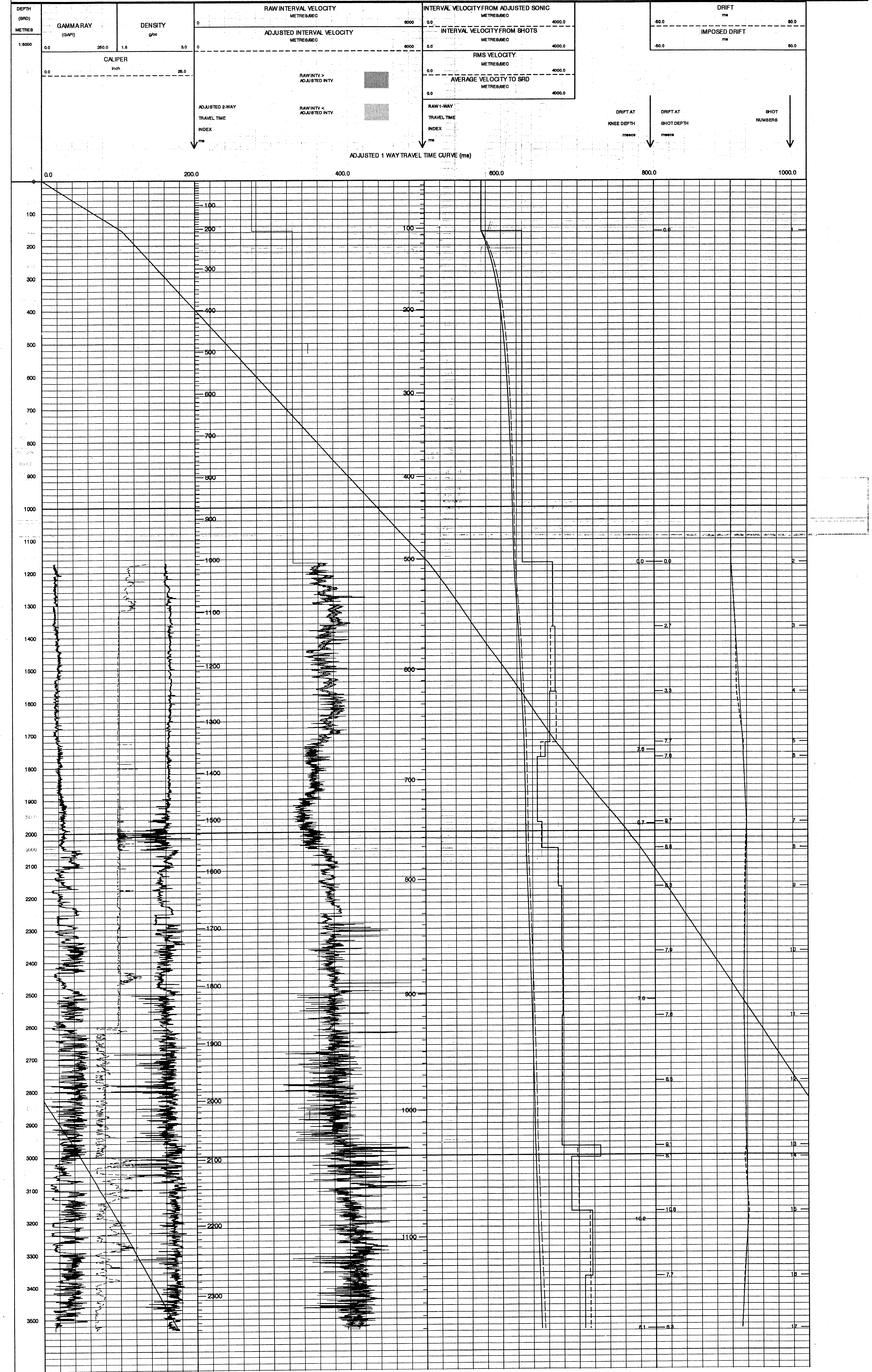
Logging Datum: 28.40
 Seismic Reference Datum: 0.00
 ELEVATION ABOVE MEAN SEA LEVEL



Total Number of Levels: 21
 Depth Reference: SRD
 Time Reference: SRD

Part	Date	Type	Interval	Depth	Depth	Top	Bottom
				Start	End	Depth	Depth
1	5-8-90	40.0	40.0	5.8100 MSL	10.0 BELOW MSL	202.0	200.0

The well name, location and borehole reference data were furnished by the customer.
 All interpretations are optional based on information from electrical or other measurements and we cannot and do not guarantee the accuracy or completeness of any interpretations, and we shall not, except in the case of gross or willful negligence on our part, be liable or responsible for any loss, costs, damage or expense incurred or sustained by anyone resulting from any interpretations made by any of our officers, agents or employees. These interpretations are subject to Clause 4 of our General Terms and Conditions as set out in our current Price Schedule.



COMPANY SHELL AUSTRALIA
 FIELD GIPSLAND BASIN
 WELL GUMMY #1
 COUNTRY AUSTRALIA

