



PE801495

COTUIHY BASIN

AMDEL.
FLAXMIAN, MUSSEL, NAUTILUS, PECTEN, PRAWN.

TABLE 1: WELLS AND INTERVALS SAMPLED FOR SOURCE ROCK ANALYSIS

| Well | Interval Sampled ft |
|------------|------------------------|
| Flaxmans-1 | 5510-5530 |
| | 8090-8150 |
| | 8950-9350 |
| | 9650-9680 |
| | 9950-10050 |
| | 10350-10400 |
| Mussel-1 | 4680-4910 |
| | 7150-7210 |
| | 7730-7910 |
| | 7980-8030 |
| Nautilus-1 | 5950-6950 |
| Pecten-1 | 6930-6960 |
| | 8010-8050 |
| | 9230-9330 |
| Prawn-A1 | *9860 |
| | 9900-9910 |
| | 9940-9950 |
| | 10120-10130 |
| | 10210-10220 |
| | 10280-10290 |

*Core; all other samples cuttings

OIL and GAS DIVISION

07 SEP 1984

HYDROCARBON SOURCE POTENTIAL OF SELECTED
ROCK SAMPLES FROM FIVE EXPLORATION WELLS,
EASTERN OTWAY BASIN

Bass Strait Oil & Gas (Holdings) N.L.

F3/0/0-6901/84

July, 1984

By

AMDEL



The Australian
Mineral Development
Laboratories

Flemington Street, Frewville
South Australia 5063
Phone Adelaide 79 1662
Telex AA82520

Please address all
correspondence to
P.O. Box 114 Eastwood
SA 5063
In reply quote:

amdel

18 July 1984

07 SEP 1984

OIL and GAS DIVISION

F3/0/0
6901/84

FILED IN HYDROCARBON REPORTS BOX.

Bass Strait Oil & Gas (Holdings) NL,
67-69 Palmerston Crescent,
SOUTH MELBOURNE Vic. 3205

Attention: Mr Richard Ingram

REPORT F6901/84

CLIENT REFERENCE: Letter dated 28 May 1984

TITLE: Hydrocarbon source potential of
selected rock samples from five
exploration wells, eastern Otway Basin.

MATERIAL: Cuttings, core

LOCALITIES: FLAXMANS-1, MUSSEL-1, NAUTILUS-1,
PECTEN-1, PRAWN-A1

SAMPLE IDENTIFICATION: As specified in report

DATE RECEIVED: 28 May 1984

WORK REQUIRED: Total organic carbon. Rock-Eval pyrolysis.
Liquid chromatography of extract. Gas
chromatography of saturates. Kerogen
isolation and analysis by pyrolysis-
gas chromatography. Interpretation.

Investigation and Report by: Dr David M. McKirdy

Chief - Fuels Section: Dr Brian G. Steveson



for Dr William G. Spencer
Manager,
Mineral & Materials Sciences Division

cah

Head Office:
Flemington Street, Frewville
South Australia 5063
Telephone (08) 79 1662
Telex: Amdel AA82520
Pilot Plant:
Osman Place
Thebarton, S.A.
Telephone (08) 43 5733
Branch Laboratories:
Melbourne, Vic.
Telephone (03) 645 3093
Perth, W.A.
Telephone (09) 325 7311
Telex: Amdel AA94893
Townsville
Queensland 4814
Telephone (077) 75 1377

1. INTRODUCTION

Nineteen cuttings and one core sample from five petroleum exploration wells in the eastern Otway Basin were received for source rock analysis (Table 1). The resulting analytical data are used to assess the hydrocarbon generating potential (maturity, source richness, kerogen type) of the rocks sampled.

2. ANALYTICAL PROCEDURES

2.1 Sample Preparation

The rock samples (as received) were ground in a Siebtechnik mill for 20-3 secs.

2.2 Total Organic Carbon (TOC)

Total organic carbon was determined by digestion of a known weight (0.2-0.5 g) of powdered rock in 50% HCl to remove carbonates, followed by combustion in oxygen in the induction furnace of a Leco IR-12 Carbon Determinator and measurement of the resultant CO₂ by infra-red detection.

2.3 Rock-Eval Analysis

A 100 mg portion of powdered rock was analysed by the Rock-Eval pyrolysis technique (Girdel IFP-Fina Mark 2 instrument; operating mode, Cycle 1).

2.4 Extractable Organic Matter (EOM)

Powdered rock (10-60 g) was extracted with methylene chloride/methanol (85:15) in a Soxhlet apparatus for 24 hrs. Removal of solvent by careful rotary evaporation gave the crude extract (nominally C₁₅₊ EOM).

2.5 Liquid Chromatography

Asphaltenes were precipitated from the extract with petroleum ether (IP method 143/57), and the asphaltene-free fraction separated into saturated hydrocarbons, aromatic hydrocarbons and polar compounds (resins) by liquid chromatography on 20 parts activated alumina under 80 parts activated silica gel. The saturates were eluted with petroleum ether, the aromatics with petroleum ether/methylene chloride (91:9), and the resins with methanol/methylene chloride (65:35) followed by methanol.

2.6 Gas Chromatography

The saturated hydrocarbons (alkanes) were examined by gas chromatography using the following instrumental parameters:

| | |
|------------------------------------|---|
| Gas chromatograph: | Perkin Elmer Sigma 2 fitted with Grob injector. |
| Column: | 25 m x 0.33 mm fused silica, SGE QC3/BP1 |
| Detector: | FID |
| Injector and detector temperature: | 280°C |
| Carrier gas: | H ₂ at 9 psi |
| Column temperature: | 80°C for 4 mins, then 5° per minute to 295°C and held at 295° until all peaks eluted. |
| Quantitation: | Relative concentrations of individual normal and isoprenoid alkanes obtained by measurement of peak areas with a Spectra-Physics SP4270 integrator. |

2.7 Kerogen Isolation

Solvent-extracted rock powder was digested in 5N HCl on a steam bath, with occasional agitation, for 1-2 hours. The carbonate-free residue was then washed thoroughly with distilled water, before acid digestion in conc. HF/HCl (5:1) for 2-3 hours. The spent acid was carefully decanted and the residue washed in distilled water until neutral. The kerogen concentrate was then dried in air at 50°C.

2.8 Pyrolysis-Gas Chromatography (PGC)

The kerogen concentrate was analysed by pyrolysis-gas chromatography (PGC), as follows:

| | |
|------------------------------------|--|
| Instrument: | Chemical Data Systems Pyroprobe 120 solids pyrolyser (incorporating 382 extended temperature programming option), in tandem with Perkin Elmer Sigma 3 gas chromatograph. |
| Column: | 25 m x 0.33 mm fused silica SGE QC3/BP1 |
| Carrier gas: | He at 36 cm/sec |
| Detector: | FID |
| Injector and detector temperature: | 280°C |
| Sample size: | 5 mg |
| Pyrolysis temperature: | 700°C for 30 sec. |
| Column temperature: | -40°C while trapping pyrolysate on front end of column; then 10°C for 3 min, 10-280°C at 5°/min, and held at 280°C. |

3. RESULTS

TOC and Rock-Eval data on Flaxmans-1, Mussel-1, Nautilus-1, Pecten-1 and Prawn-A1 are listed in Tables 2-6, respectively. Figures 1-5 are cross plots of hydrogen index versus Tmax which demonstrate kerogen type and maturity for the sample suite from each of these wells.

EOM data on five samples from Flaxmans-1, Pecten-1 and Prawn-A1 high-graded by Rock-Eval analysis are presented in Tables 7-11, Figures 6-10 (saturates chromatograms) and Figures 11-15 (n-alkane and isoprenoid distributions).

Kerogen PGC data are summarised in Table 12 and plotted in Figure 16. Figures 17-20 are PGC traces of the four kerogens analysed.

4. DISCUSSION

4.1 Maturity

Rock-Eval pyrolysis data (Figs. 1-5) provide the following estimates of thermal maturity, expressed as vitrinite reflectance (VR):

| Well | Interval ft | Tmax °C | Equiv. VR % |
|------------|----------------|------------|----------------|
| Flaxmans-1 | 8950-10360 | 440-451 | 0.6-0.9 |
| Mussel-1 | 4680-8030 | 421-435 | <0.5 |
| Nautilus-1 | 5950-6950 | 429 | <0.5 |
| Pecten-1 | 8010-9330 | 443-444 | ~0.7 |
| Prawn-A1 | 9860-10290 | 425-437 | 0.4-0.6 |

These results are in reasonable to good agreement with published VR data for Pecten-1, Mussel-1 and Nautilus-1 (Middleton & Falvey, 1983).

The principal rank thresholds for hydrocarbon generation from terrigenous organic matter (after Snowdon & Powell, 1982; Powell & Snowdon, 1983; and Monnier *et al.*, 1983) are as follows:

| Threshold | VR % |
|--------------------------------|---------|
| top oil window (resinite-rich) | 0.45 |
| top gas window | 0.6 |
| top oil window (resinite-poor) | 0.7 |

Oil generation from algal and/or bacterial organic matter commences at VR = 0.5%.

Thus, only one of the samples analysed herein (viz. Flaxmans-1, 10350-10400 ft) comes from within the main zone of oil generation for terrigenous organic matter.

The low proportion of hydrocarbons (<30% of EOM) in the five rock extracts (Tables 7-11) also, in part, reflects this lack of maturity.

4.2 Source Richness

Three quarters of the samples examined have total organic carbon contents (Table 2) which exceed the minimum value (TOC = 0.5%) commonly considered necessary for the generation and expulsion of producible quantities of hydrocarbons from a fine-grained siliciclastic rock (shale, siltstone). TOC values greater than 2% probably indicate the presence of coal in the cuttings.

Source richness is in most cases poor, as indicated by potential hydrocarbon yields ($S_1 + S_2$) of less than 2 kg/tonne. However, the following samples have $S_1 + S_2$ values characteristic of fair to good oil-source rocks:

| Well | Depth ft | $S_1 + S_2$ kg h'c/tonne | Richness |
|------------|-------------|-----------------------------|----------|
| Flaxmans-1 | 9650-9680 | 11.0 | good |
| Pecten-1 | 8010-8050 | 2.1 | fair |
| Prawn-A1 | 9860 | 4.7 | fair |
| | 10210-10220 | 2.7 | fair |
| | 10280-10290 | 4.6 | fair |

4.3 Source Quality and Kerogen Type

Hydrogen indices in the range $HI = 0-190$ (Table 2) suggest that these rocks contain organic matter of humic Type III, tending to inertinitic Type IV, composition (Figs. 1-5).

Low hydrogen index values ($HI < 100$) generally correlate with the presence of dry gas-prone, inertinite-rich dispersed organic matter (DOM).

Four samples appear to contain Type III kerogen which has significant liquids-generating potential. They are as follows:

| Well | Depth ft | Hydrogen Index mg S_2 /g TOC |
|------------|-------------|-----------------------------------|
| Flaxmans-1 | 9650-9680 | 186 |
| Prawn-A1 | 9860 | 176 |
| | 10210-10220 | 189 |
| | 10280-10290 | 179 |

The oil and gas-prone character of these kerogens is demonstrated by their PGC traces (Figs. 17-20). The pyrolysate of all four kerogens contains a high proportion of C_{15+} n-alkenes/n-alkanes (Table 12). The somewhat more oil-prone nature of the Flaxmans-1 (9650-9680 feet) and Prawn-A1 (10280-10290 feet) kerogens (Fig. 16) is reflected in the higher abundance of n-alkyl moieties relative to aromatic products (labelled A).

The terrigenous (land-plant) source affinity of these kerogens, and of kerogen in the Pecten-1 (8010-8050 feet) sample, is confirmed by the high pristane/phytane ratios of their associated EOM ($pr/ph = 3-8$; Tables 7-11). The lower pristane/phytane ratios ($pr/ph \sim 2$) of the Prawn-A1 (9860-9870 and 10210-10220 feet) extracts correlate with anomalously high C_{15+} hydrocarbon yields (83-100 mg/g TOC) and the occurrence of prominent naphthene humps in the saturates chromatograms (Tables 9 and 10, Figs. 8 and 9). Both these samples are from sandy intervals and may contain partially biodegraded reservoir bitumen. Alternatively, they may be contaminated (e.g. by pipe dope).

5. CONCLUSIONS AND RECOMMENDATIONS

1. Preliminary source-rock analysis of Cretaceous sediments from five wells in the eastern Otway Basin indicates that the well sections sampled, viz.

| | |
|------------|-----------------|
| Flaxmans-1 | 5510-10050 feet |
| Mussel-1 | 4680-8030 feet |
| Nautilus-1 | 5950-6950 feet |
| Pecten-1 | 6930-9330 feet |
| Prawn-A1 | 9860-10290 feet |

all lie above the top of the oil-generation window for resinite-poor terrigenous organic matter. One Otway Group sample from below 10300 feet depth in Flaxmans-1 is oil-mature.

2. Siliciclastics represented by the cuttings and core examined generally contain poor quality, gas-prone terrigenous organic matter.
3. Notable exceptions are carbonaceous shale and siltstone from Flaxmans-1 (9650-9680 feet) and Prawn-A1 (9860 and 10210-10290 feet) in which oil and gas-prone, woody-herbaceous, Type III kerogen (HI ~180 mg hydrocarbons/g TOC) is present. This particular organic facies, where it has attained somewhat higher levels of thermal maturity than exist at these two well localities, is a potential source of waxy paraffinic oil of the type found in Port Campbell-4.
4. The foregoing conclusions are based on only twenty spot samples from five exploration wells. Such sampling is totally inadequate and cannot be regarded as a valid assessment of the hydrocarbon source potential of the Cretaceous section in this part of the Otway Basin.
5. It is recommended that a more comprehensive program of source-rock screening by Rock-Eval pyrolysis be undertaken on cuttings from Flaxmans-1, Mussel-1, Pecten-1 and Prawn-A1, paying particular attention to the Otway Group (Eumeralla Formation). Samples high-graded by Rock-Eval analysis should also be subjected to organic petrological examination in order to establish the abundance and identity of the oil-prone liptinite (exinite) macerals.

6. REFERENCES

- MIDDLETON, M.F., and FALVEY, D.A., 1983. Maturation modeling in Otway Basin, Australia. *Bull. Am. Assoc. Petrol. Geol.*, 67, 271-279.
- MONNIER, F., POWELL, T.G., and SNOWDON, L.R., 1983. Qualitative and quantitative aspects of gas generation during maturation of sedimentary organic matter. Examples from Canadian frontier basins. In: BJOROY, M. *et al.* (eds), *Advances in Organic Geochemistry 1981*, Wiley, Chichester, pp.487-495.
- POWELL, T.G., and SNOWDON, L.R., 1983. A composite hydrocarbon generation model - implications for evaluation of basins for oil and gas. *Erdol und Kohle*, 36 (4), 163-170.

SNOWDON, L.R., and POWELL, T.G., 1982. Immature oil and condensate - modification of hydrocarbon generation model for terrestrial organic matter. *Bull. Am. Assoc. Petrol. Geol.*, 66, 775-788.

AMDEL

ROCK-EVAL PYROLYSIS

Client BASS STRAIT OIL AND GAS

Well FLAXMANS #1

| DEPTH | T MAX | S1 | S2 | S3 | S1+S2 | PI | S2/S3 | PC | TOC | HI |
|----------|-------|------|-------|------|-------|------|-------|------|------|-----|
| 5510.00 | 428 | 0.38 | 1.28 | 1.10 | 1.66 | 0.23 | 1.16 | 0.13 | 1.83 | 70 |
| 8090.00 | 361 | 0.03 | 0.05 | 0.23 | 0.08 | 0.37 | 0.21 | 0.00 | 0.25 | 20 |
| 8950.00 | 443 | 0.01 | 0.03 | 0.21 | 0.04 | 0.25 | 0.14 | 0.00 | 0.37 | 8 |
| 9650.00 | 440 | 0.88 | 10.15 | 0.35 | 11.03 | 0.08 | 29.00 | 0.91 | 5.45 | 186 |
| 9950.00 | 330 | 0.01 | 0.03 | 0.21 | 0.04 | 0.25 | 0.14 | 0.00 | 0.31 | 10 |
| 10350.00 | 451 | 0.04 | 0.16 | 0.19 | 0.20 | 0.20 | 0.84 | 0.01 | 0.35 | 46 |

AMDEL

ROCK-EVAL PYROLYSIS

29/05/84

Client BASS STRAIT OIL AND GAS

Well MUSSEL #1

| DEPTH | T MAX | S1 | S2 | S3 | S1+S2 | PI | S2/S3 | PC | TOC | HI | OI |
|---------|-------|------|------|------|-------|------|-------|------|------|----|-----|
| 4680.00 | 435 | 0.08 | 0.35 | 0.75 | 0.43 | 0.19 | 0.46 | 0.03 | 1.00 | 35 | 75 |
| 7150.00 | 421 | 0.11 | 0.44 | 1.16 | 0.55 | 0.20 | 0.37 | 0.04 | 1.03 | 43 | 113 |
| 7730.00 | 429 | 0.09 | 0.45 | 0.89 | 0.54 | 0.17 | 0.50 | 0.04 | 1.35 | 33 | 66 |
| 7980.00 | 428 | 0.54 | 1.22 | 0.96 | 1.76 | 0.31 | 1.27 | 0.14 | 1.70 | 72 | 56 |

AMDEL

ROCK-EVAL PYROLYSIS

29/05/84

| | | | | | | | | | | | |
|---------|-------------------------|------|------|------|-------|------|-------|------|------|----|----|
| Client | BASS STRAIT OIL AND GAS | | | | | | | | | | |
| Well | NAUTILUS #1 | | | | | | | | | | |
| DEPTH | T MAX | S1 | S2 | S3 | S1+S2 | PI | S2/S3 | PC | TOC | HI | OI |
| 5950.00 | 429 | 0.07 | 0.44 | 0.90 | 0.51 | 0.14 | 0.48 | 0.04 | 1.16 | 38 | 78 |

.MDEL

ROCK-EVAL PYROLYSIS

Client BASS STRAIT OIL AND GAS

Well PECTEN #1

| DEPTH | T MAX | S1 | S2 | S3 | S1+S2 | PI | S2/S3 | PC | TOC | HI | |
|---------|-------|------|------|------|-------|------|-------|------|------|-----|----|
| 6930.00 | 455 | 0.03 | 0.00 | 0.27 | 0.03 | 1.00 | 0.00 | 0.00 | 0.25 | 0 | 10 |
| 8010.00 | 443 | 0.10 | 1.97 | 0.31 | 2.07 | 0.05 | 6.35 | 0.17 | 1.76 | 112 | 1 |
| 9230.00 | 444 | 0.03 | 0.34 | 0.26 | 0.37 | 0.08 | 1.30 | 0.03 | 0.63 | 54 | 4 |

4MOEL

ROCK-EVAL PYROLYSIS

Client BASS STRAIT OIL AND GAS

Well PRAWN #A1

| DEPTH | T MAX | S1 | S2 | S3 | S1+S2 | PI | S2/S3 | PC | TOC | HI |
|----------|-------|------|------|------|-------|------|-------|------|------|-----|
| 9860.00 | 425 | 1.09 | 3.60 | 0.66 | 4.69 | 0.23 | 5.45 | 0.39 | 2.04 | 176 |
| 9900.00 | 427 | 0.20 | 0.84 | 0.58 | 1.04 | 0.19 | 1.44 | 0.08 | 0.71 | 118 |
| 9940.00 | 433 | 0.06 | 0.52 | 0.55 | 0.58 | 0.10 | 0.94 | 0.04 | 0.70 | 74 |
| 10120.00 | 437 | 0.11 | 0.78 | 0.58 | 0.89 | 0.12 | 1.34 | 0.07 | 1.07 | 73 |
| 10210.00 | 429 | 0.42 | 2.23 | 0.48 | 2.65 | 0.16 | 4.64 | 0.22 | 1.18 | 189 |
| 10280.00 | 437 | 0.17 | 4.44 | 0.51 | 4.61 | 0.04 | 8.70 | 0.38 | 2.48 | 179 |

KEY TO ROCK-EVAL PYROLYSIS DATA SHEET

| | <u>PARAMETER</u> | <u>SPECIFICITY</u> |
|---------------------------------|---|--|
| T max | position of S ₂ peak in temperature program (°C) | Maturity/Kerogen type |
| S ₁ | kg hydrocarbons (extractable)/tonne rock | Kerogen type/Maturity/Migrated oil |
| S ₂ | kg hydrocarbons (kerogen pyrolysate)/tonne rock | Kerogen type/Maturity |
| S ₃ | kg CO ₂ (organic)/tonne rock | Kerogen type/Maturity * |
| S ₁ + S ₂ | Potential Yield | Organic richness/Kerogen type |
| PI | Production Index (S ₁ /S ₁ + S ₂) | Maturity/Migrated Oil |
| PC | Pyrolysable Carbon (wt. percent) | Organic richness/Kerogen type/Maturity |
| TOC | Total Organic Carbon (wt. percent) | Organic richness |
| HI | Hydrogen Index (mg h'c (S ₂)/g TOC) | Kerogen type/Maturity |
| OI | Oxygen Index (mg CO ₂ (S ₃)/g TOC) | Kerogen type/Maturity * |

*Also subject to interference by CO₂ from decomposition of carbonate minerals.

TABLE 7

AMDEL
SOURCE ROCK ANALYSIS

WELL: FLAXMANS NO.1

SAMPLE: 9650 FT
TYPE OF SAMPLE: CUTTINGS

| | |
|----------------------------|------------|
| total organic carbon | 5.45 % |
| weight of sample extracted | 33.93 g |
| weight of eom | 229.8 mg |
| extracted organic matter | 6773 ppm |
| eom as fraction of toc | 124.3 mg/g |

ANALYSIS OF EXTRACTED ORGANIC MATTER, (%)

| | |
|-------------|------|
| SATURATES | 13.8 |
| AROMATICS | 4.4 |
| RESINS | 17.8 |
| ASPHALTENES | 63.9 |

N-ALKANE DISTRIBUTION IN SATURATES

| C-NO. | % | C-NO. | % | C-NO. | % | C-NO. | % | C-NO. | % |
|-------|------|-------|------|-------|-----|-------|-----|-------|----|
| 12 | 1.6 | 17 | 10.0 | 22 | 6.1 | 27 | 1.7 | 32 | .0 |
| 13 | 4.0 | 18 | 9.4 | 23 | 5.3 | 28 | .8 | 33 | .0 |
| 14 | 7.0 | 19 | 9.1 | 24 | 3.9 | 29 | .5 | 34 | .0 |
| 15 | 9.6 | 20 | 7.9 | 25 | 3.4 | 30 | .3 | 35 | .0 |
| 16 | 10.1 | 21 | 7.0 | 26 | 2.1 | 31 | .2 | 36 | .0 |

ISOPRENOID RATIOS

| | |
|----------------------------|------|
| TMTD/pristane ratio | .52 |
| norpristane/pristane ratio | .27 |
| pristane/phytane ratio | 7.74 |
| pristane/C-17 ratio | .67 |
| phytane/C-18 ratio | .09 |

TABLE 8

AMDCL
SOURCE ROCK ANALYSIS

WELL: PECTEN NO.1

SAMPLE: 8010 FT
TYPE OF SAMPLE: CUTTINGS

| | |
|----------------------------|------------|
| total organic carbon | 1.76 % |
| weight of sample extracted | 56.82 g |
| weight of eom | 126.8 mg |
| extracted organic matter | 2232 ppm |
| eom as fraction of toc | 126.8 mg/g |

ANALYSIS OF EXTRACTED ORGANIC MATTER, (%)

| | |
|-------------|------|
| SATURATES | 5.1 |
| AROMATICS | 3.5 |
| RESINS | 16.6 |
| ASPHALTENES | 74.8 |

N-ALKANE DISTRIBUTION IN SATURATES

| C-NO. | % | C-NO. | % | C-NO. | % | C-NO. | % | C-NO. | % |
|-------|------|-------|------|-------|-----|-------|-----|-------|----|
| 12 | 3.7 | 17 | 12.1 | 22 | 2.7 | 27 | 1.4 | 32 | .0 |
| 13 | 8.6 | 18 | 8.1 | 23 | 2.7 | 28 | .5 | 33 | .0 |
| 14 | 12.9 | 19 | 5.7 | 24 | 2.0 | 29 | .5 | 34 | .0 |
| 15 | 14.5 | 20 | 3.9 | 25 | 2.2 | 30 | .2 | 35 | .0 |
| 16 | 14.0 | 21 | 3.1 | 26 | 1.2 | 31 | .1 | 36 | .0 |

ISOPRENOID RATIOS

| | |
|----------------------------|------|
| TMTD/pristane ratio | .59 |
| nonpristane/pristane ratio | .26 |
| pristane/phytane ratio | 6.38 |
| pristane/C-17 ratio | .99 |
| phytane/C-18 ratio | .23 |

TABLE 9

AMDEL
SOURCE ROCK ANALYSIS

WELL: PRAWN NO. A1

SAMPLE: 9860 FT
TYPE OF SAMPLE: CUTTINGS

| | |
|----------------------------|------------|
| total organic carbon | 2.04 % |
| weight of sample extracted | 15.97 g |
| weight of eom | 147.7 mg |
| extracted organic matter | 9249 ppm |
| eom as fraction of toc | 453.4 mg/g |

ANALYSIS OF EXTRACTED ORGANIC MATTER, (%)

| | |
|-------------|------|
| SATURATES | 13.3 |
| AROMATICS | 5.0 |
| RESINS | 23.1 |
| ASPHALTENES | 58.6 |

N-ALKANE DISTRIBUTION IN SATURATES

| C-NO. | % | C-NO. | % | C-NO. | % | C-NO. | % | C-NO. | % |
|-------|-----|-------|------|-------|-----|-------|-----|-------|-----|
| 12 | .1 | 17 | 5.0 | 22 | 8.8 | 27 | 6.4 | 32 | .7 |
| 13 | .4 | 18 | 6.0 | 23 | 6.7 | 28 | 4.1 | 33 | 1.0 |
| 14 | 1.0 | 19 | 7.6 | 24 | 6.0 | 29 | 4.2 | 34 | .4 |
| 15 | 1.9 | 20 | 9.7 | 25 | 6.2 | 30 | 2.5 | 35 | .2 |
| 16 | 3.2 | 21 | 10.4 | 26 | 5.9 | 31 | 1.6 | 36 | .0 |

ISOPRENOID RATIOS

| | |
|----------------------------|------|
| TMTD/pristane ratio | .22 |
| norpristane/pristane ratio | .34 |
| pristane/phytane ratio | 2.17 |
| pristane/C-17 ratio | 1.02 |
| phytane/C-18 ratio | .39 |

CARBON PREFERENCE INDEX (C-23 TO C-33):

C.P.I. = 1.23

TABLE 10

AMDEL
SOURCE ROCK ANALYSIS

WELL: PRAWN NO.A1

SAMPLE: 10210 FT
TYPE OF SAMPLE: CUTTINGS

| | |
|----------------------------|------------|
| total organic carbon | 1.18 % |
| weight of sample extracted | 9.83 g |
| weight of eom | 44.6 mg |
| extracted organic matter | 4537 ppm |
| eom as fraction of toc | 384.5 mg/g |

ANALYSIS OF EXTRACTED ORGANIC MATTER, (%)

| | |
|-------------|------|
| SATURATES | 17.7 |
| AROMATICS | 8.3 |
| RESINS | 39.9 |
| ASPHALTENES | 34.1 |

N-ALKANE DISTRIBUTION IN SATURATES

| C-NO. | % | C-NO. | % | C-NO. | % | C-NO. | % | C-NO. | % |
|-------|-----|-------|------|-------|-----|-------|-----|-------|----|
| 12 | .2 | 17 | 9.4 | 22 | 6.8 | 27 | 4.1 | 32 | .5 |
| 13 | .7 | 18 | 8.9 | 23 | 5.8 | 28 | 3.0 | 33 | .9 |
| 14 | 2.1 | 19 | 8.8 | 24 | 4.7 | 29 | 2.5 | 34 | .4 |
| 15 | 4.1 | 20 | 10.9 | 25 | 4.3 | 30 | 1.2 | 35 | .3 |
| 16 | 7.3 | 21 | 7.6 | 26 | 4.3 | 31 | 1.0 | 36 | .2 |

ISOPRENOID RATIOS

| | |
|----------------------------|------|
| TMTD/pristane ratio | .15 |
| norpristane/pristane ratio | .40 |
| pristane/phytane ratio | 1.86 |
| pristane/C-17 ratio | .84 |
| phytane/C-18 ratio | .48 |

CARBON PREFERENCE INDEX (C-23 TO C-33):

C.P.I. = 1.15

TABLE 11

AMDEL
SOURCE ROCK ANALYSIS

WELL: PRAWN NO. A1

SAMPLE: 10280 FT
TYPE OF SAMPLE: CUTTINGS

| | |
|----------------------------|-----------|
| total organic carbon | 2.48 % |
| weight of sample extracted | 10.91 g |
| weight of eom | 24.2 mg |
| extracted organic matter | 2218 ppm |
| eom as fraction of toc | 89.4 mg/g |

ANALYSIS OF EXTRACTED ORGANIC MATTER, (%)

| | |
|-------------|------|
| SATURATES | 14.3 |
| AROMATICS | 8.2 |
| RESINS | 4.4 |
| ASPHALTENES | 73.1 |

N-ALKANE DISTRIBUTION IN SATURATES

| C-NO. | % | C-NO. | % | C-NO. | % | C-NO. | % | C-NO. | % |
|-------|------|-------|------|-------|-----|-------|-----|-------|----|
| 12 | .1 | 17 | 10.6 | 22 | 6.7 | 27 | 3.3 | 32 | .2 |
| 13 | .6 | 18 | 9.9 | 23 | 6.4 | 28 | 1.7 | 33 | .5 |
| 14 | 2.8 | 19 | 7.7 | 24 | 5.4 | 29 | 1.8 | 34 | .0 |
| 15 | 6.7 | 20 | 8.1 | 25 | 5.3 | 30 | .6 | 35 | .0 |
| 16 | 10.3 | 21 | 7.1 | 26 | 3.6 | 31 | .6 | 36 | .0 |

ISOPRENOID RATIOS

| | |
|----------------------------|------|
| TMTD/pristane ratio | .19 |
| norpristane/pristane ratio | .29 |
| pristane/phytane ratio | 3.07 |
| pristane/C-17 ratio | .93 |
| phytane/C-18 ratio | .32 |

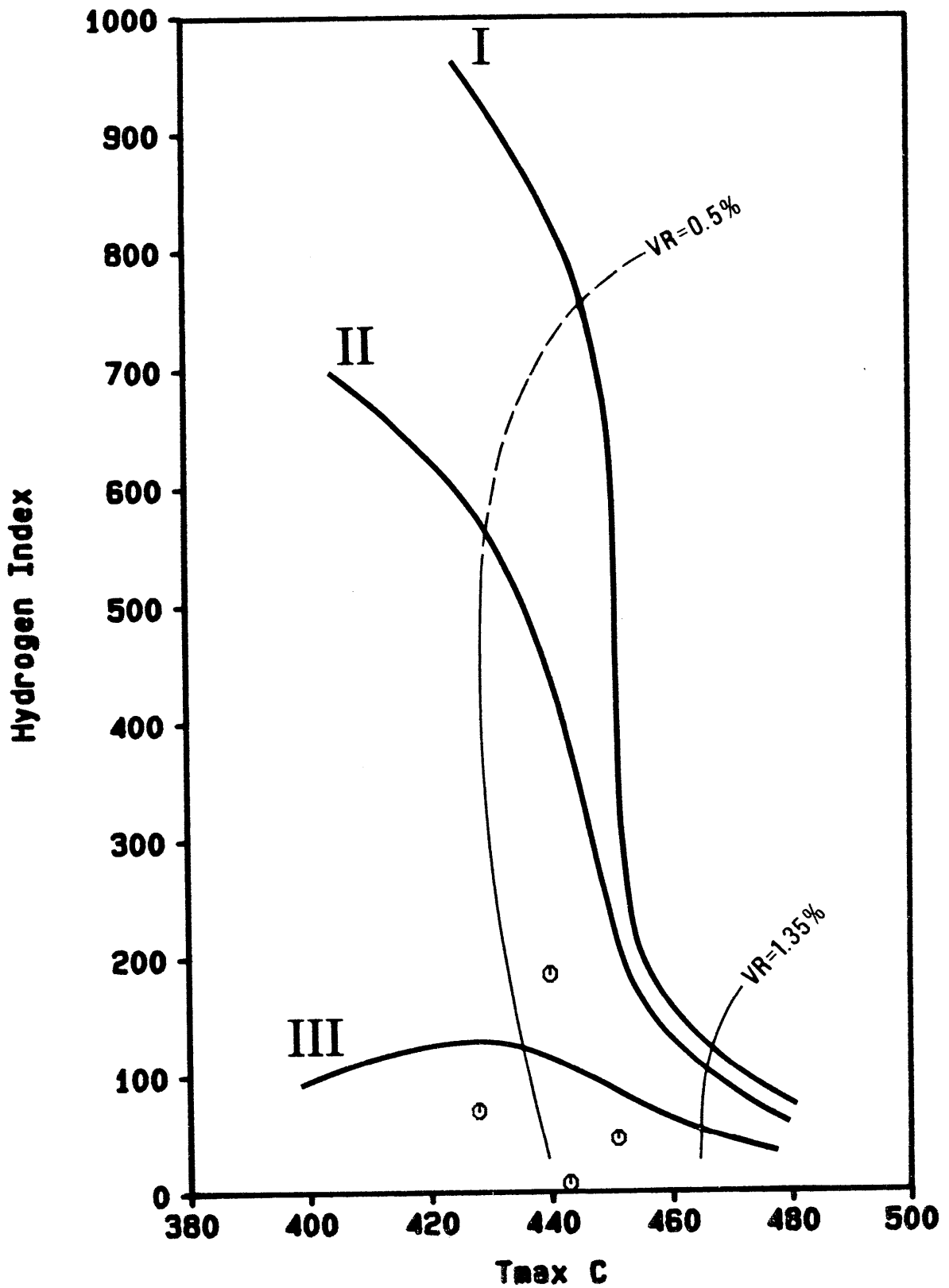
CARBON PREFERENCE INDEX (C-23 TO C-33):

C.P.I. = 1.43

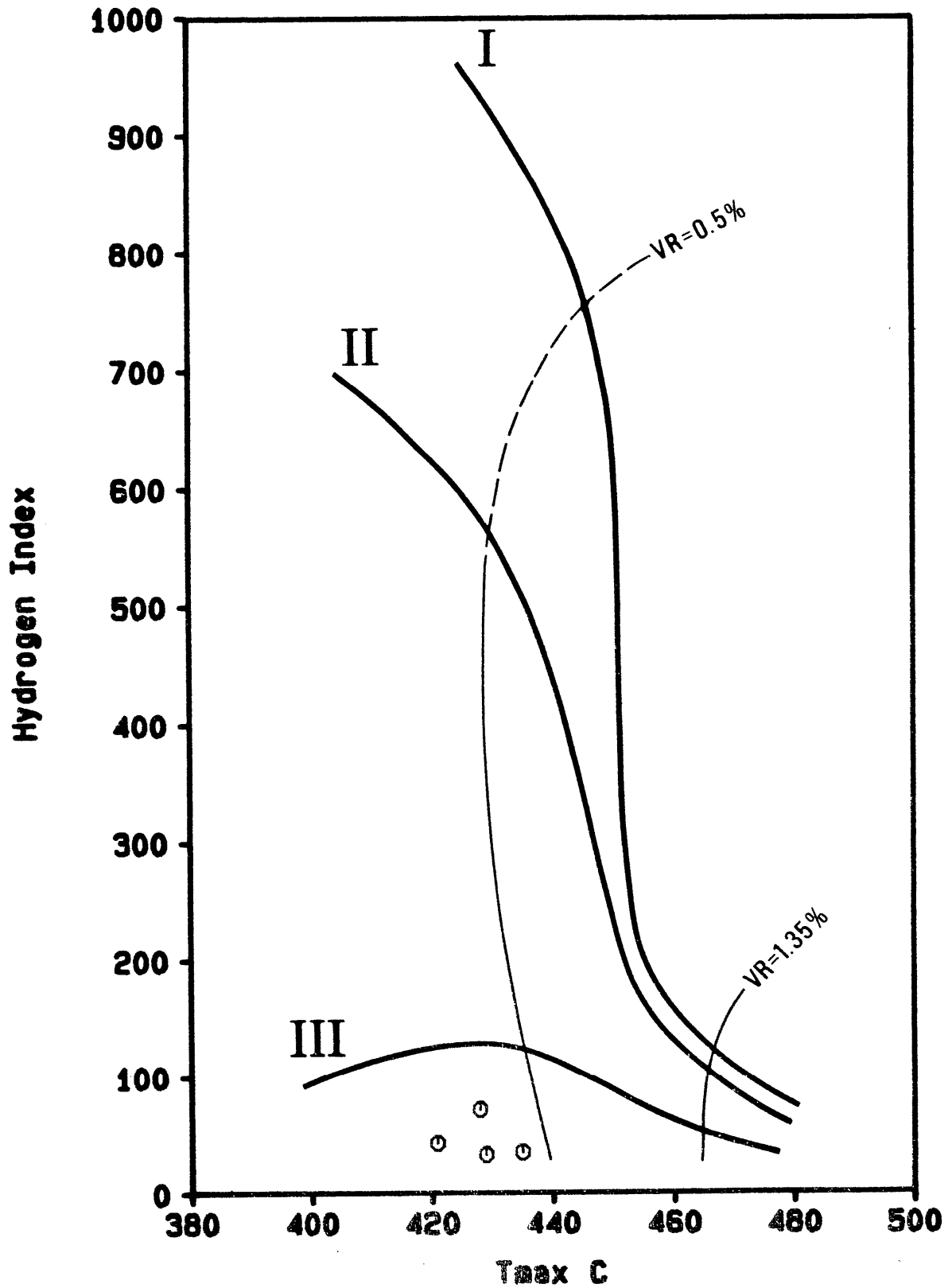
TABLE 12: PYROLYSIS-GC DATA ON KEROGEN CONCENTRATES FROM TWO
EXPLORATION WELLS, EASTERN OTWAY BASIN

| Well | Depth ft | TOC % | Kerogen concentrate % | Wt. loss after pyrolysis % | n-Alkenes + n-Alkanes | | | Toluene n-Heptene | m+p-Xylene n-Octene |
|------------|-------------|----------|-----------------------------|-------------------------------------|-------------------------------------|---------------------------------------|------------------------|----------------------|------------------------|
| | | | | | C ₅ -C ₉ % | C ₁₀ -C ₁₄ % | C ₁₅ + % | | |
| Flaxmans-1 | 9650-9680 | 5.45 | 3.2 | 27.2 | 31 | 23 | 46 | 1.15 | 0.33 |
| Prawn-A1 | 9860 | 2.04 | 2.9 | 9.0 | 27 | 25 | 48 | 1.45 | 0.91 |
| | 10210-10220 | 1.18 | 0.96 | 11.6 | 31 | 27 | 42 | 1.36 | 0.61 |
| | 10280-10290 | 2.48 | 1.6 | 19.6 | 25 | 20 | 55 | 0.74 | 0.46 |

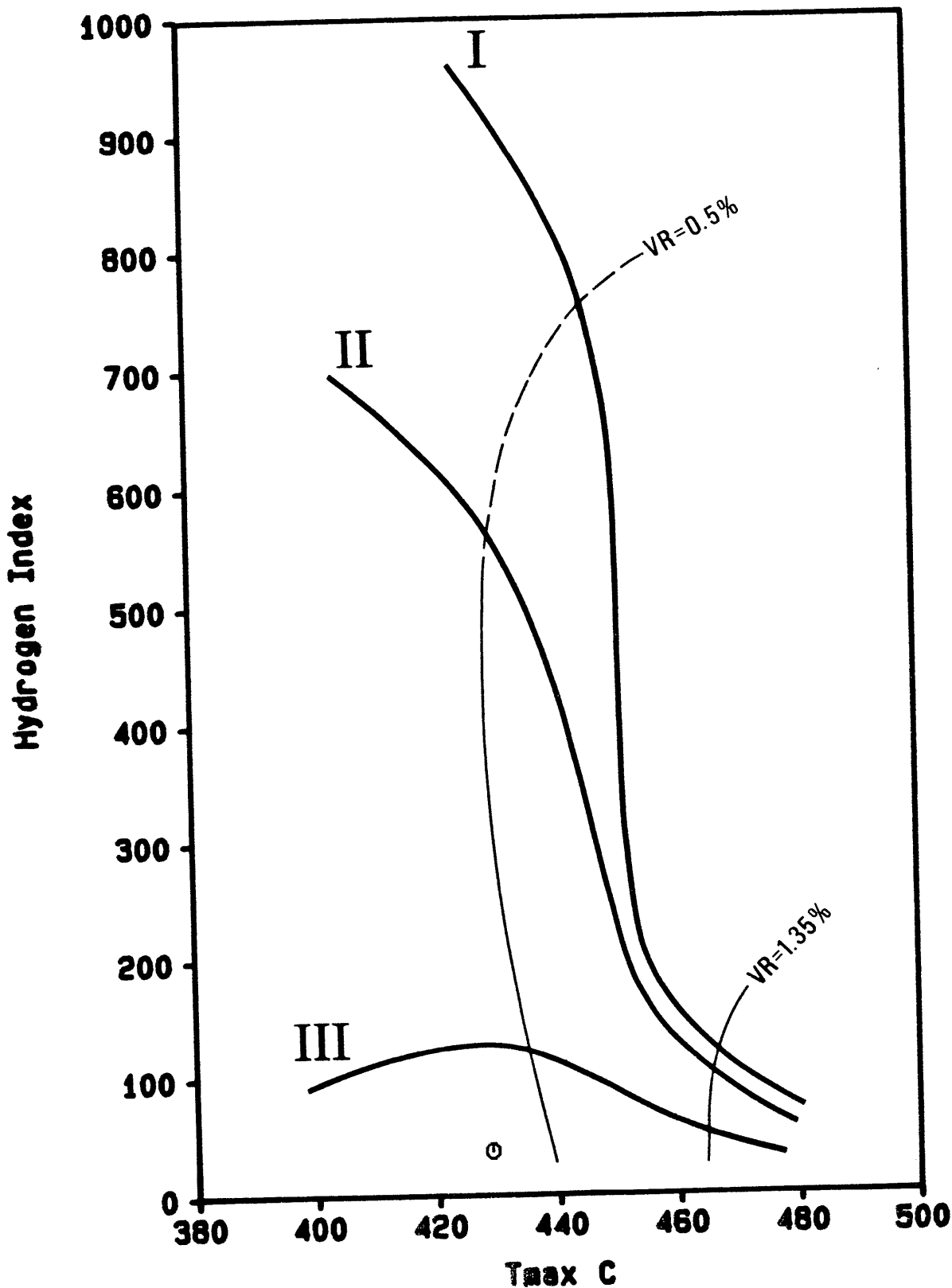
Client : BASS STRAIT OIL AND GAS
Well name : FLAXMANS #1



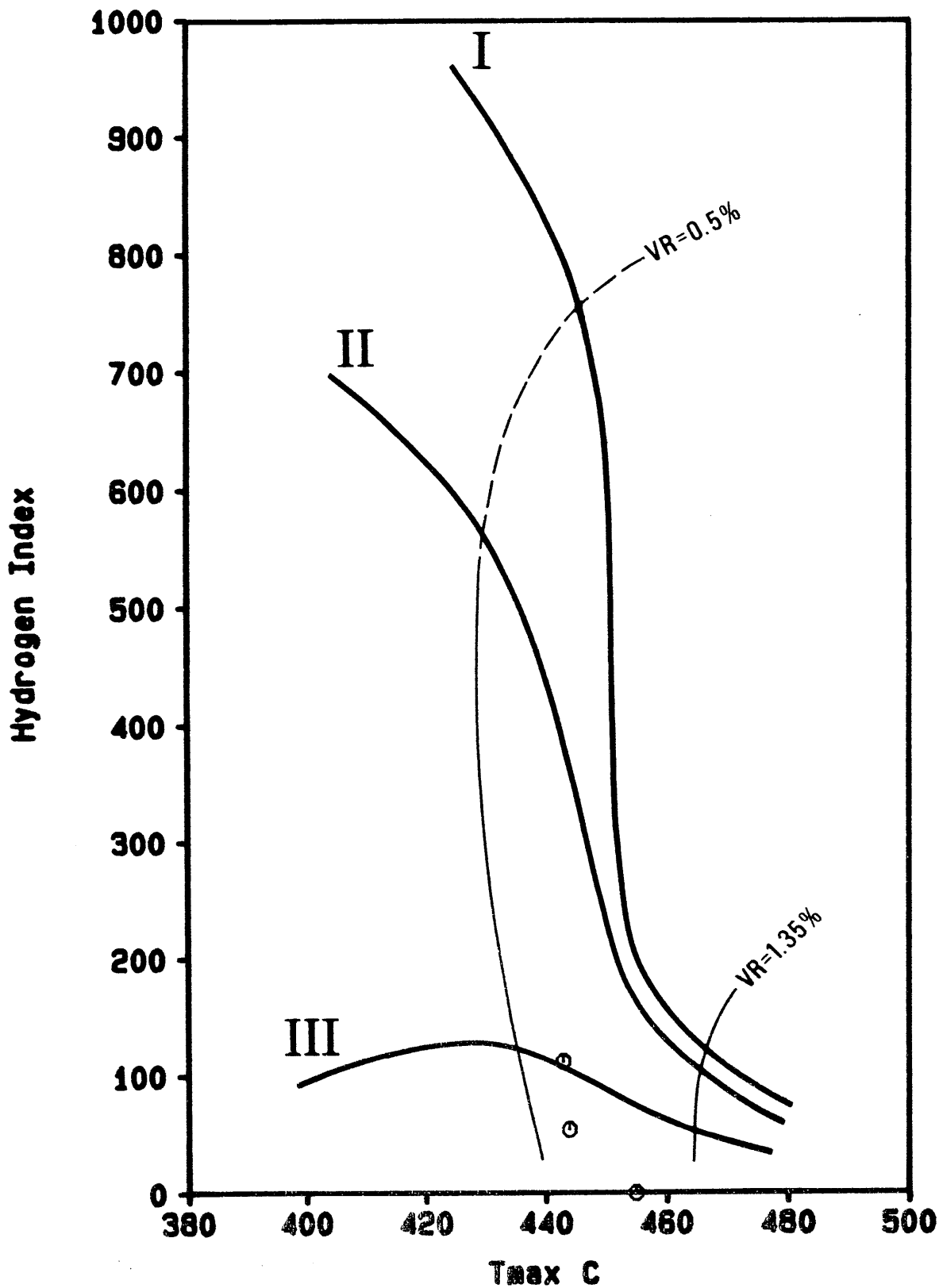
Client : BASS STRAIT OIL AND GAS
Well name : MUSSEL #1



Client : BASS STRAIT OIL AND GAS
Well name : NAUTILUS #1



Client : BASS STRAIT OIL AND GAS
Well name : PECTEN #1



Client : BASS STRAIT OIL AND GAS
Well name : PRAWN #1

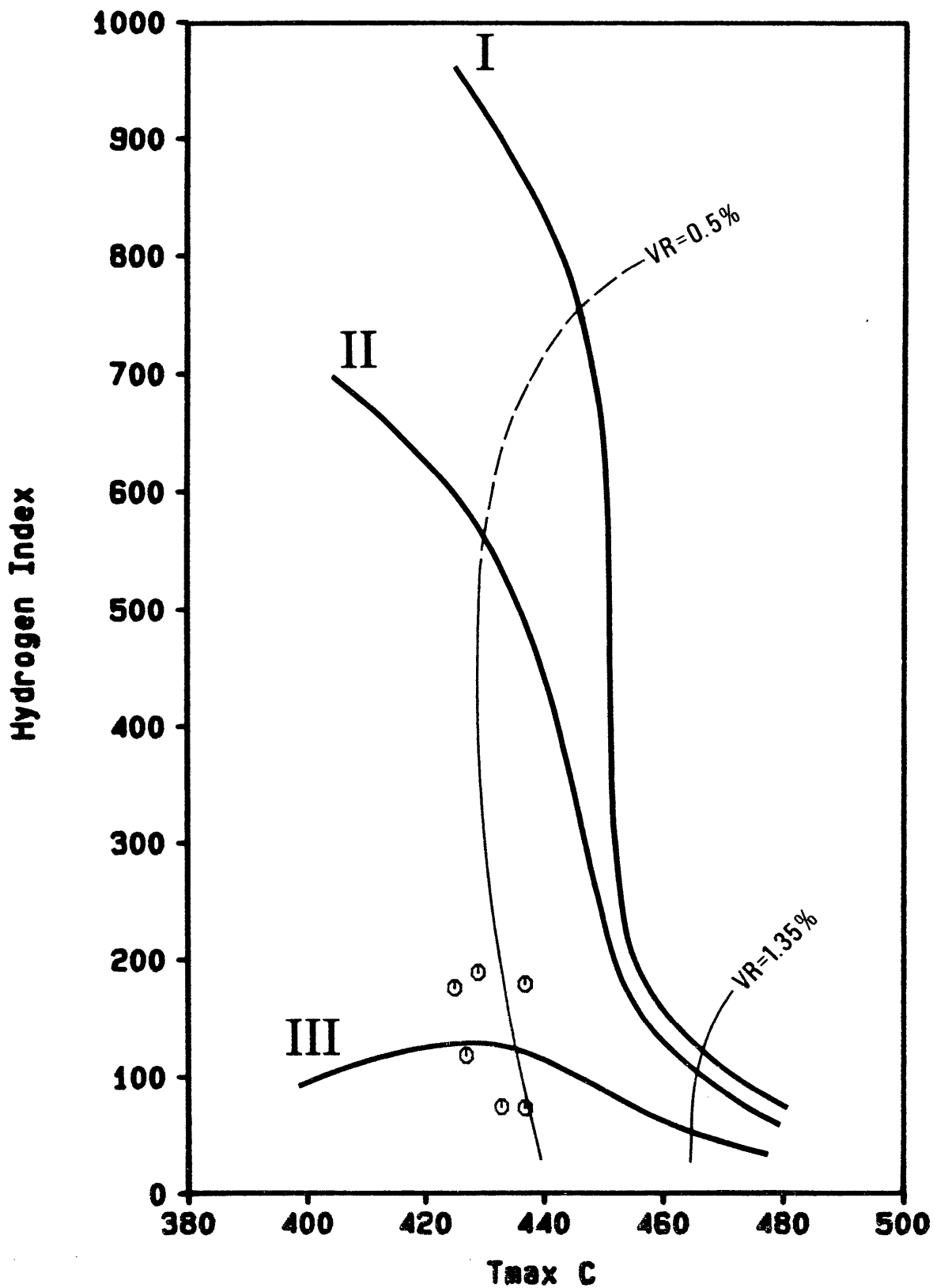


FIGURE 6

FLAYMANS NO.1
9650-9680 FT.
CUTTINGS
SATURATES

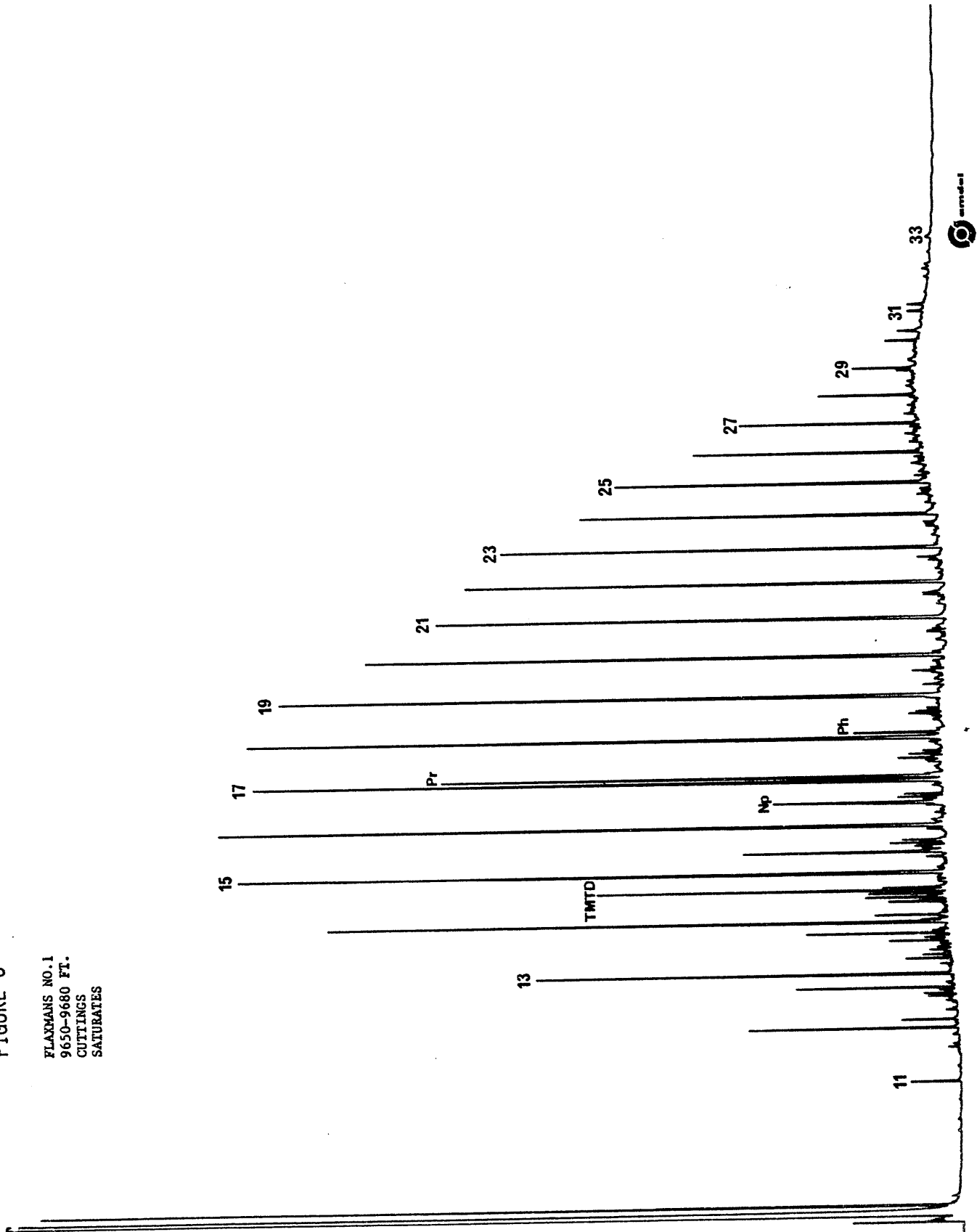


FIGURE 7

PECTEN NO. 1
8010-8050 FT.
CUTTINGS
SATURATES

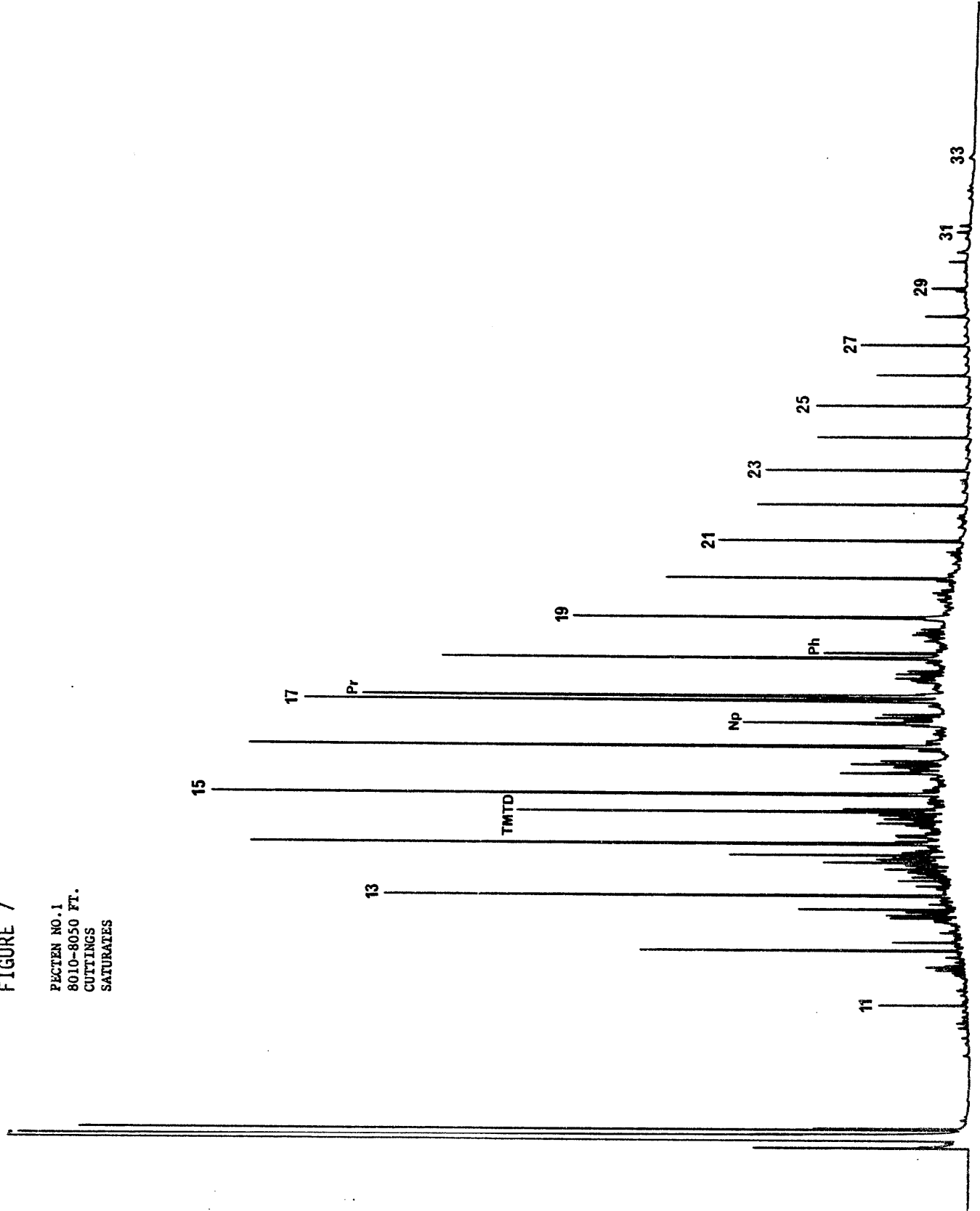


FIGURE 8

PRAWN NO. A1
9860 FT.
CUTTINGS
SATURATES

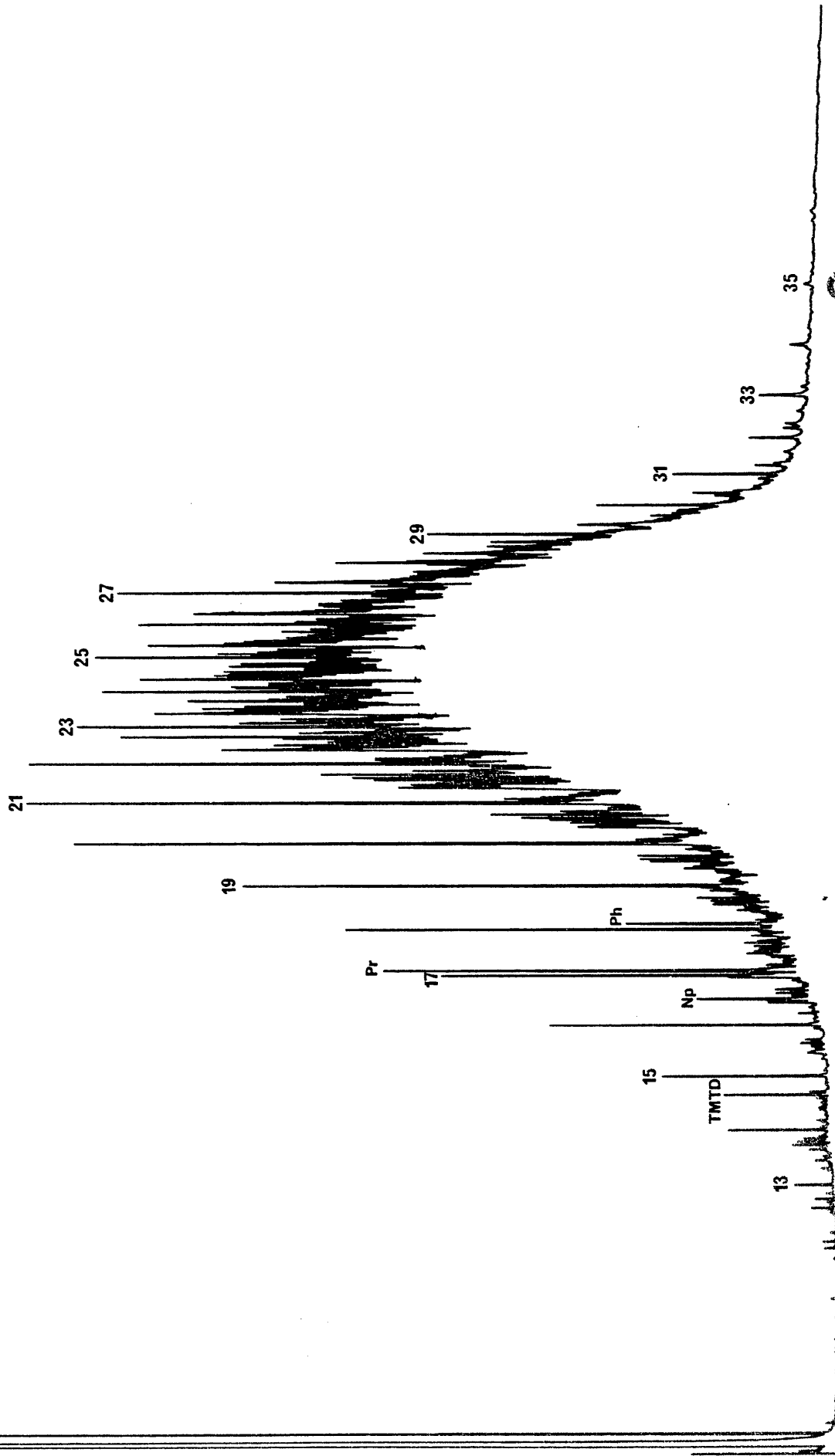


FIGURE 9

PRAWN NO. A1
10210 FT.
CUTTINGS
SATURATES

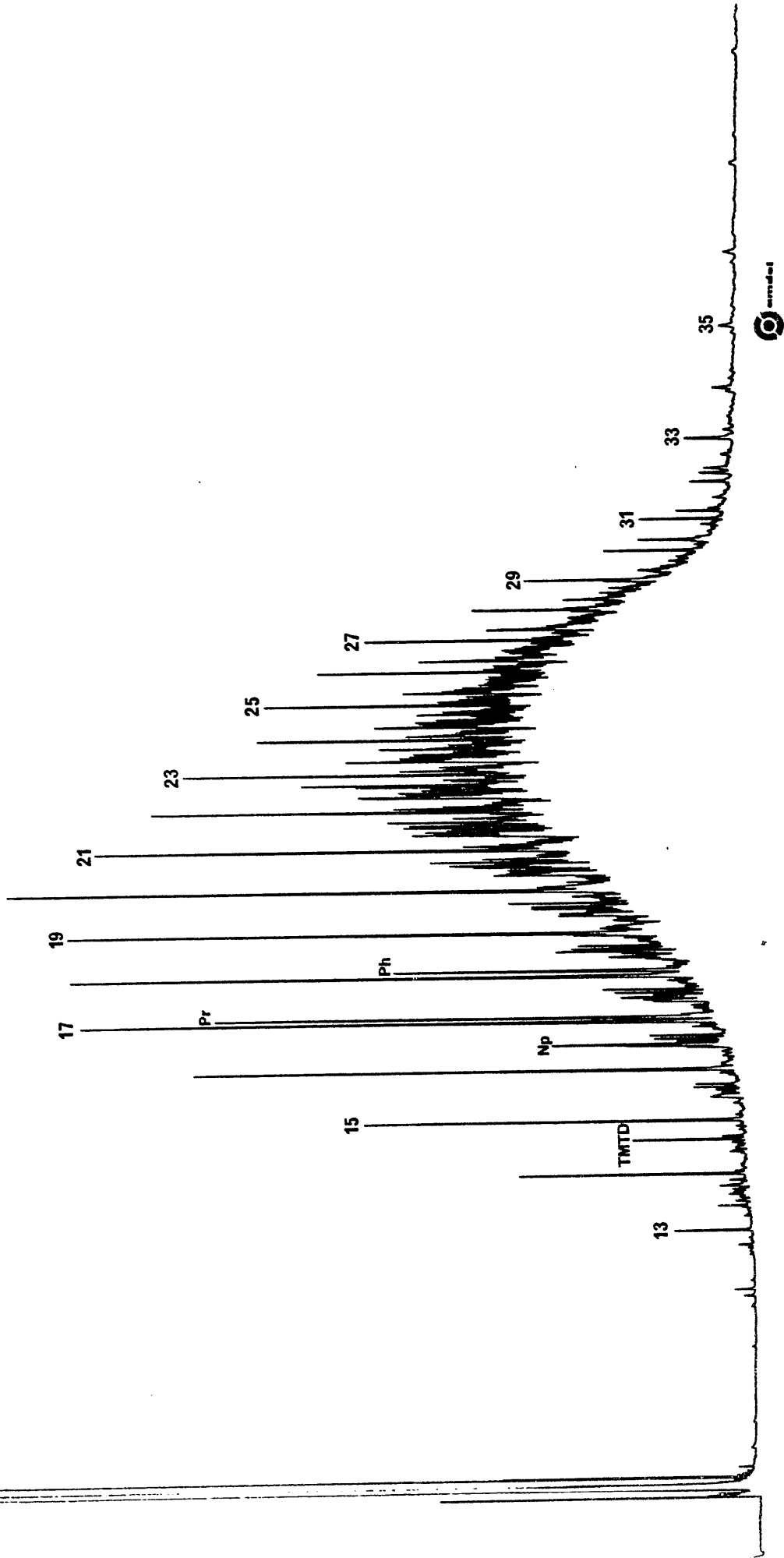


FIGURE 10

PRAWN NO.A1
10280 FT.
CUTTINGS
SATURATES

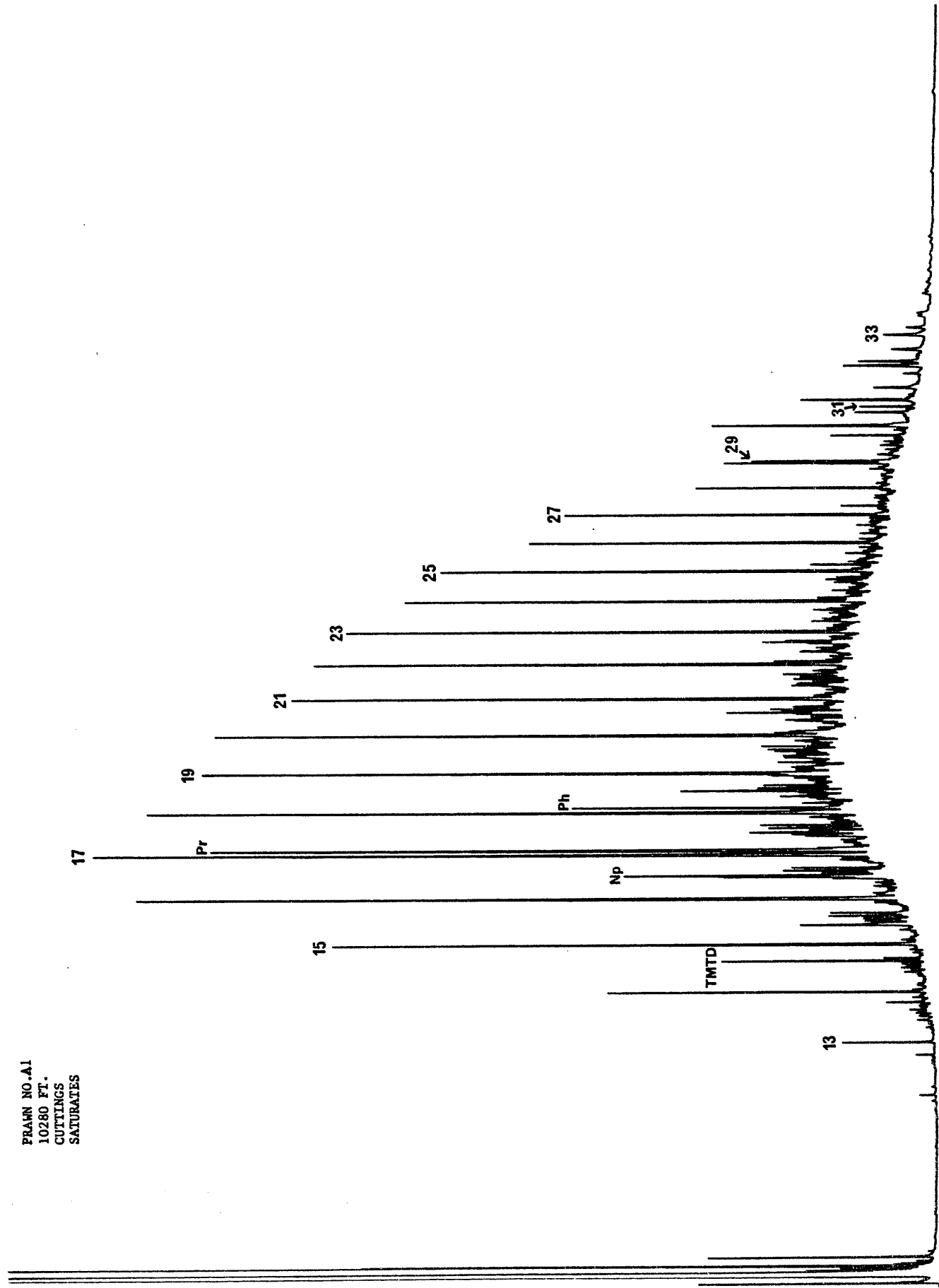


FIGURE 11

FLAXMANS NO. 1
9650 FT

N-ALKANE AND ISOPRENOID DISTRIBUTION IN SATURATES

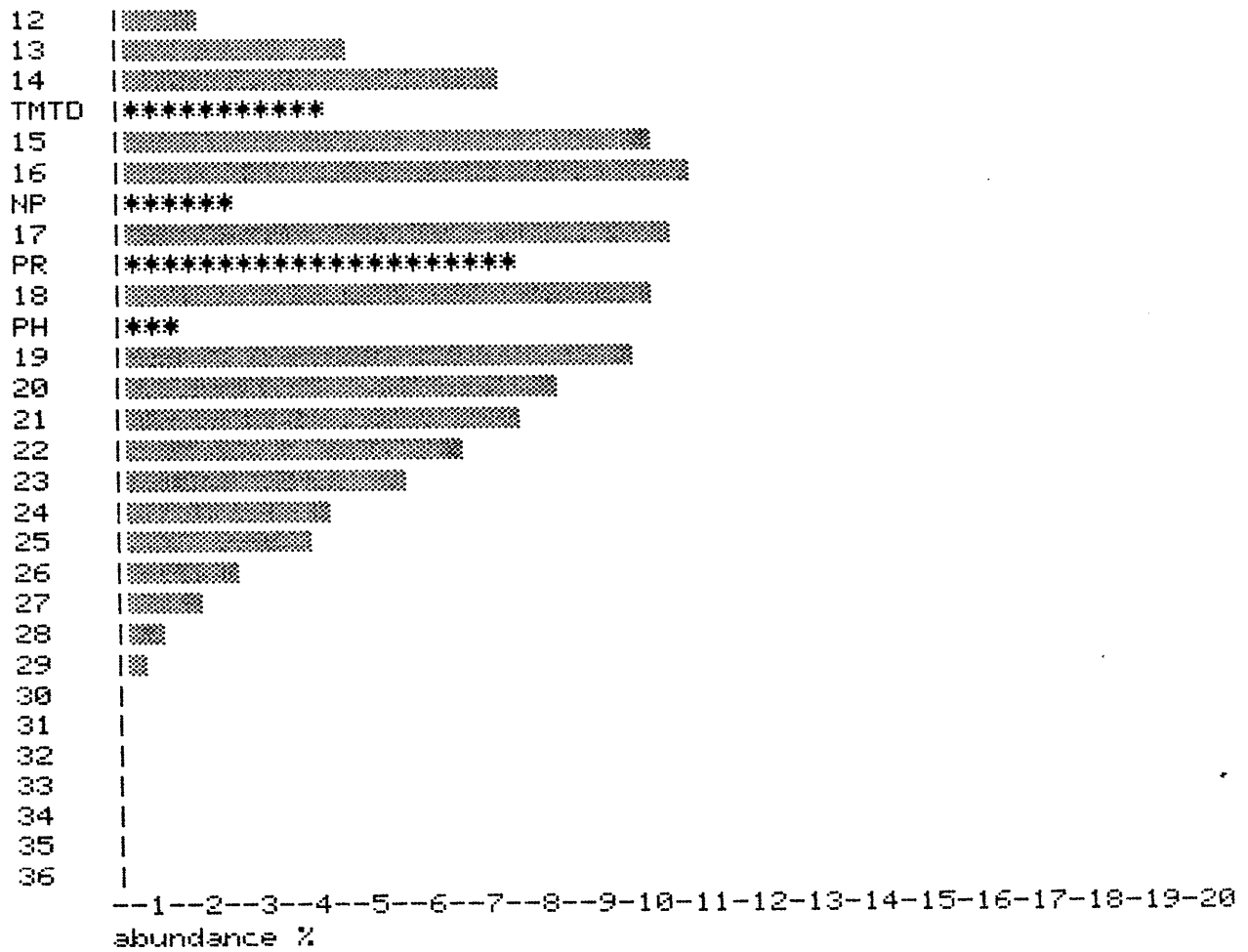


FIGURE 12

PECTEN NO.1
8010 FT

N-ALKANE AND ISOPRENOID DISTRIBUTION IN SATURATES

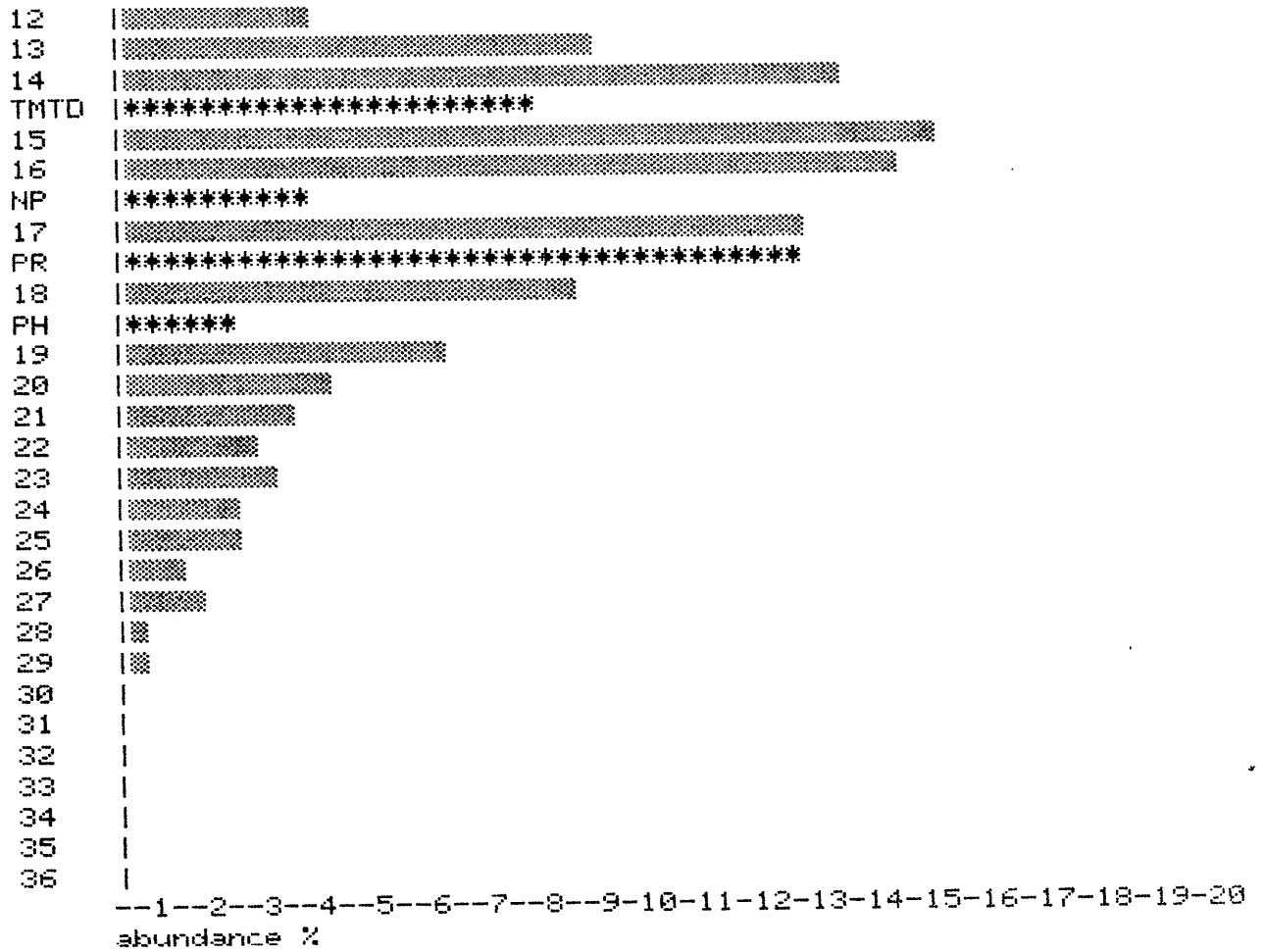


FIGURE 13

PRAWN NO. A1
9860 FT

N-ALKANE AND ISOPRENOID DISTRIBUTION IN SATURATES

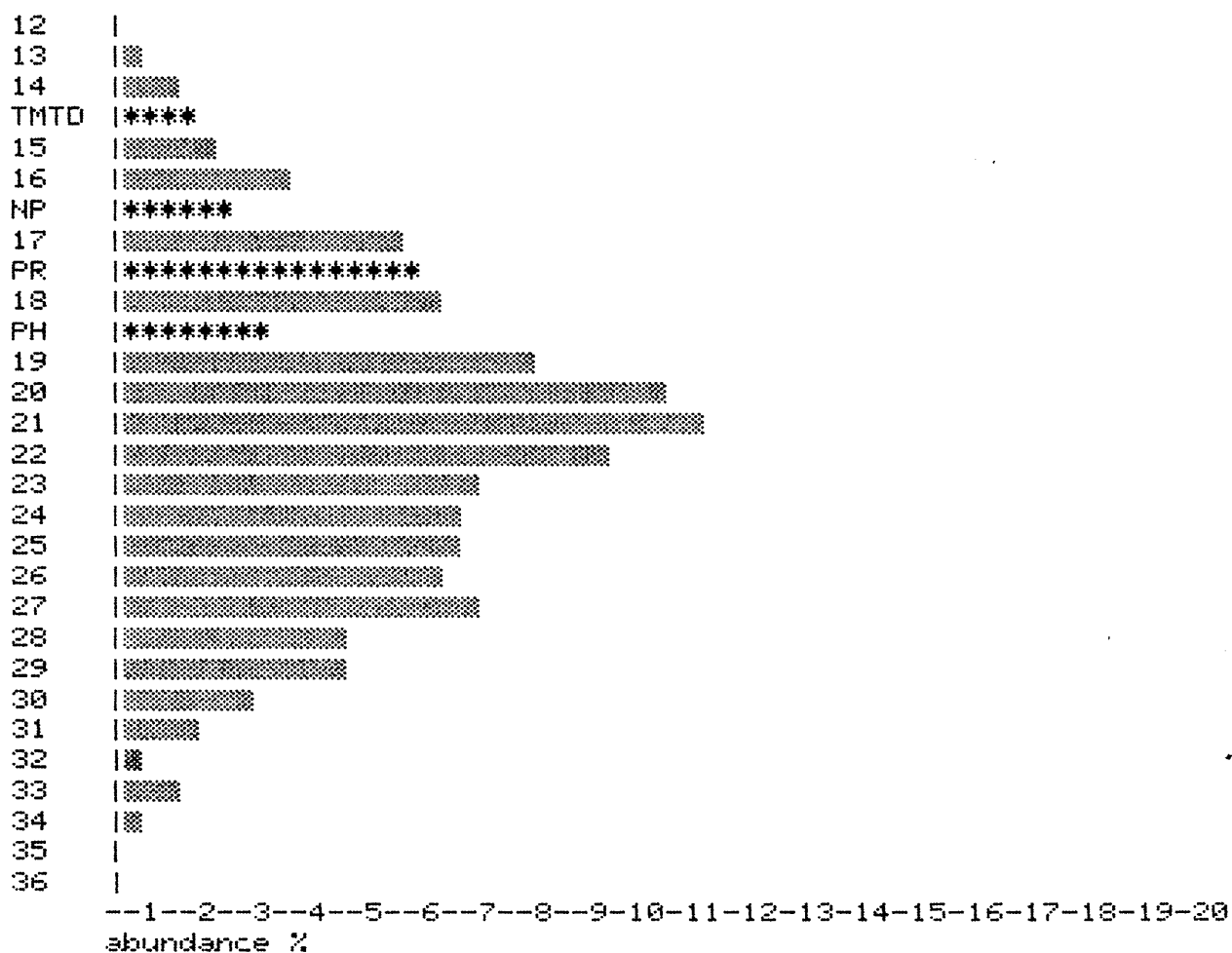


FIGURE 14

PRAWN NO. A1
10210 FT

N-ALKANE AND ISOPRENOID DISTRIBUTION IN SATURATES

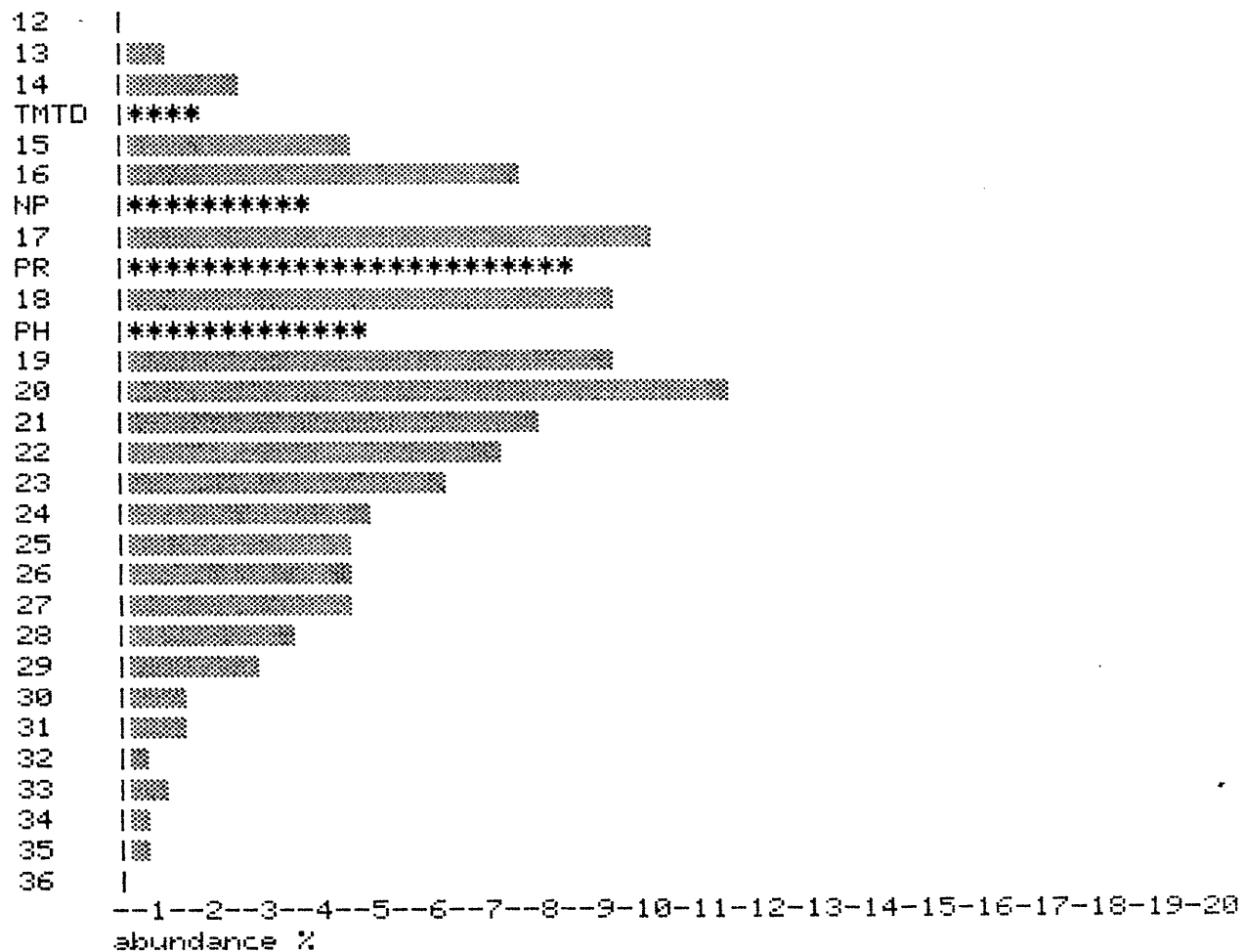


FIGURE 15

PRAWN NO. A1
10280 FT

N-ALKANE AND ISOPRENOID DISTRIBUTION IN SATURATES

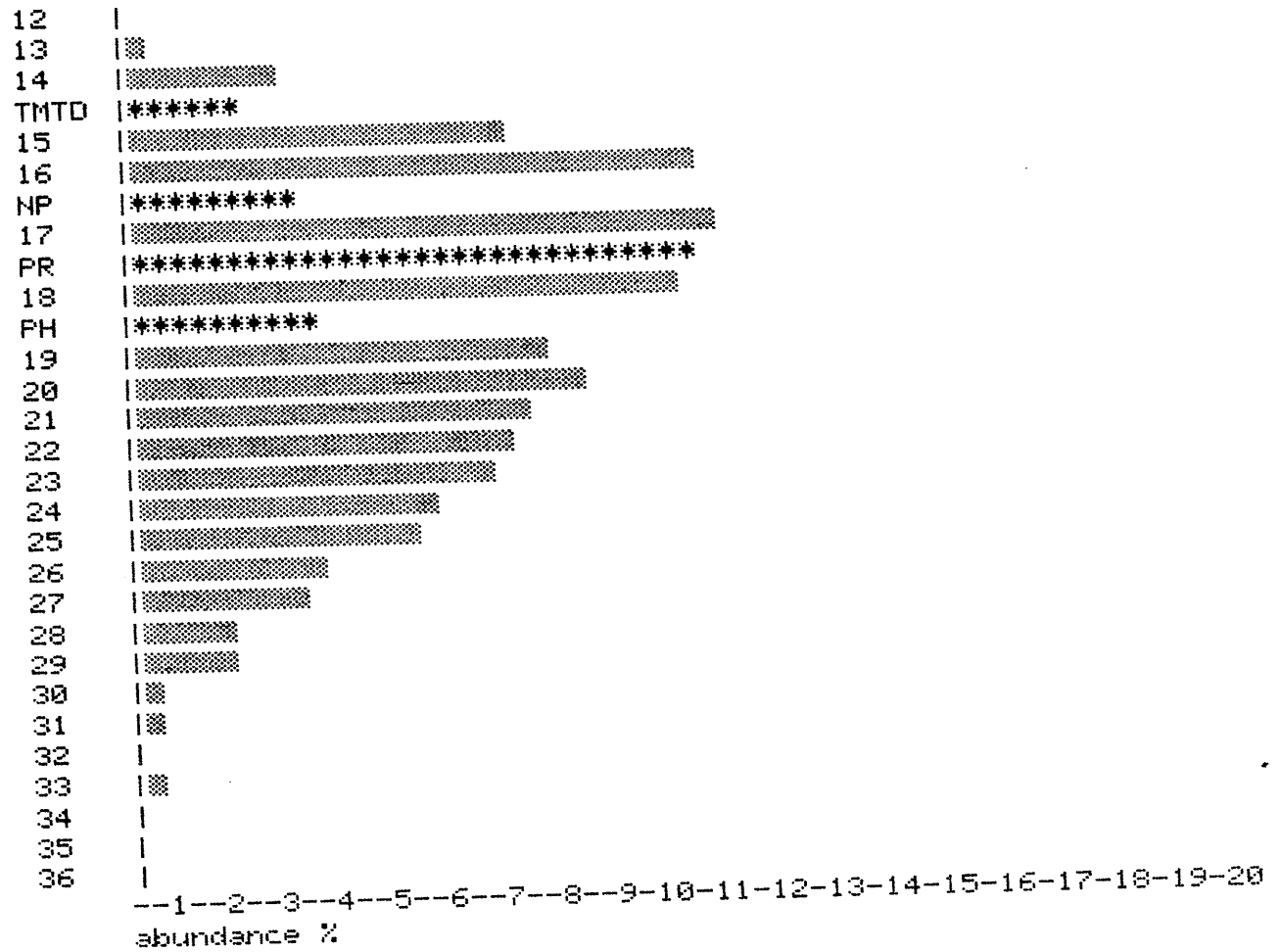
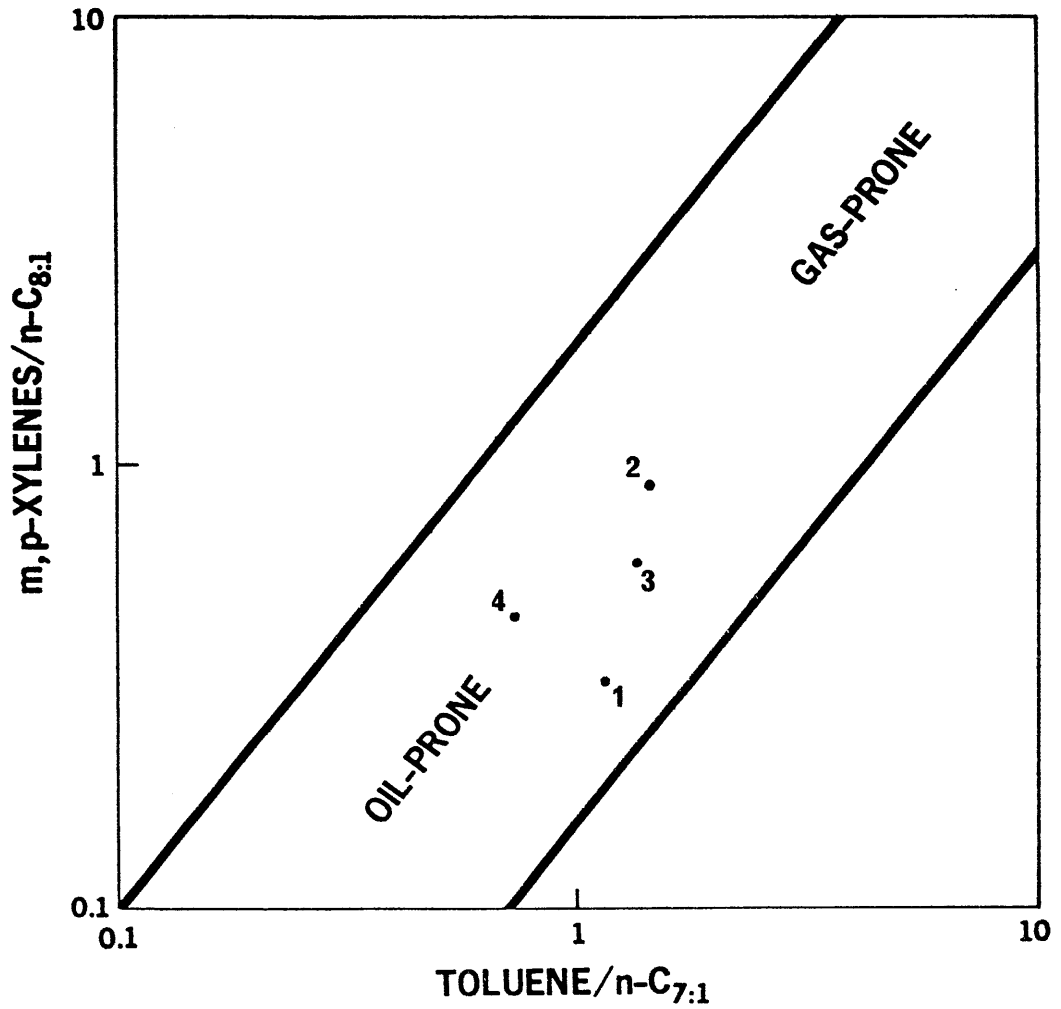


FIGURE 16

SOURCE QUALITY BASED ON
KEROGEN PYROLYSIS-GC



KEY

1. Flaxmans-1, 9650-9680 ft
2. Prawn-A1, 9860 ft
3. Prawn-A1, 10210-10220 ft
4. Prawn-A1, 10280-10290 ft

FIGURE 17

FLAMMANS NO.1
9650-9680 FT.
KEROGEN

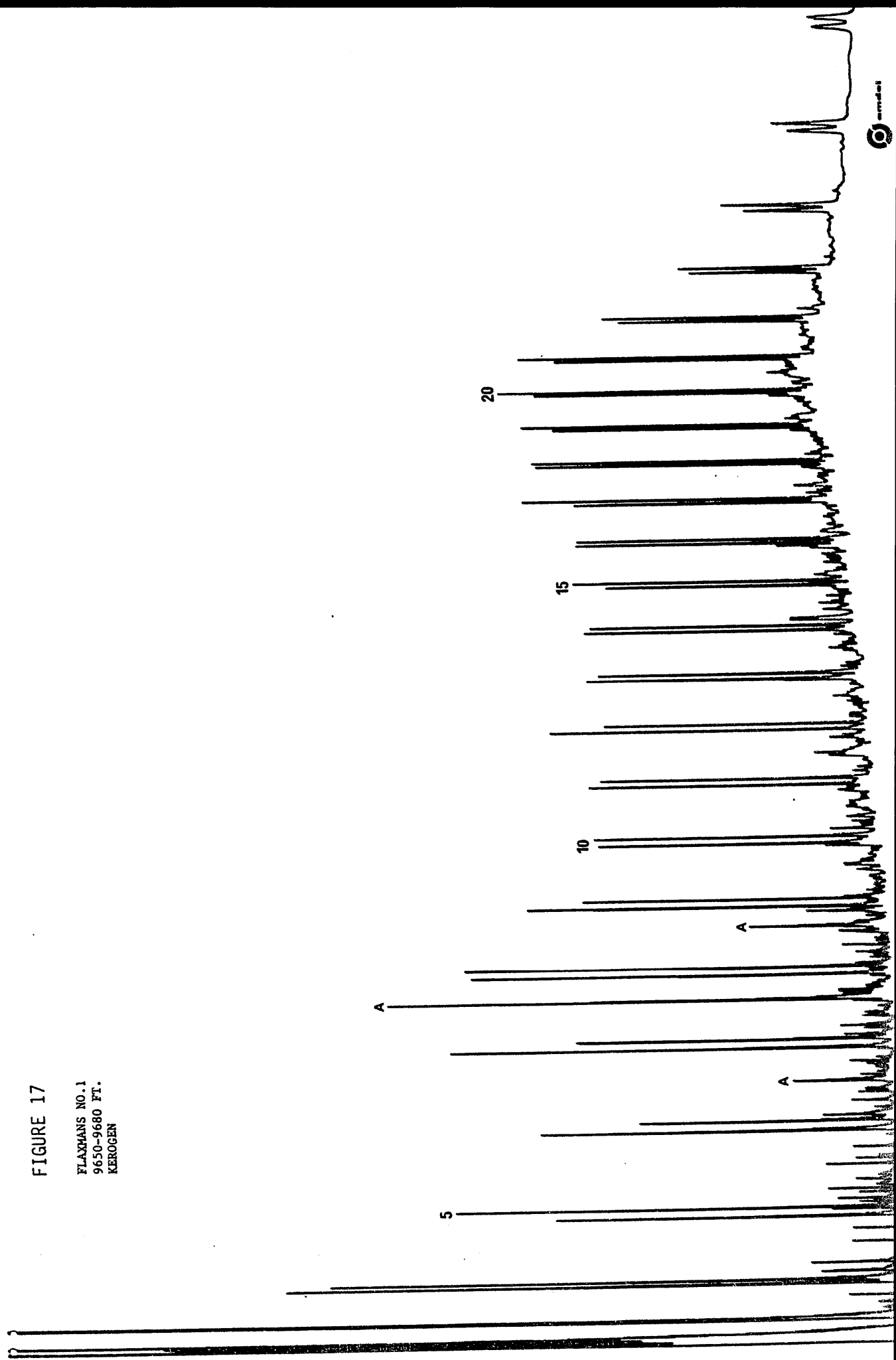


FIGURE 18

PRAIRN NO. A1
9860 FT.
KEROGEN

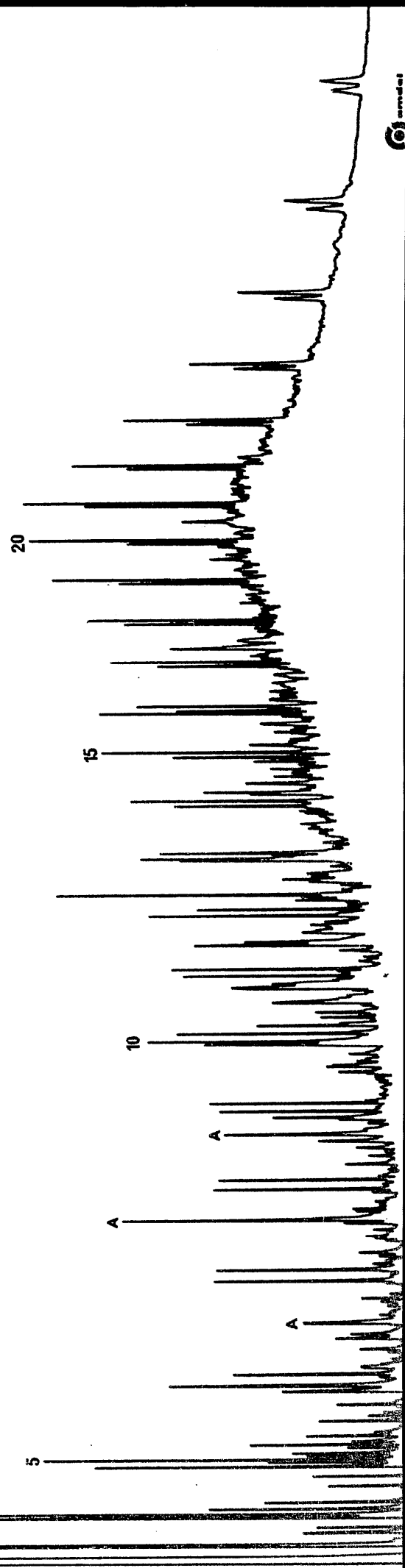




FIGURE 19

FRAME NO. 41
10210 FT.
KEROGEN

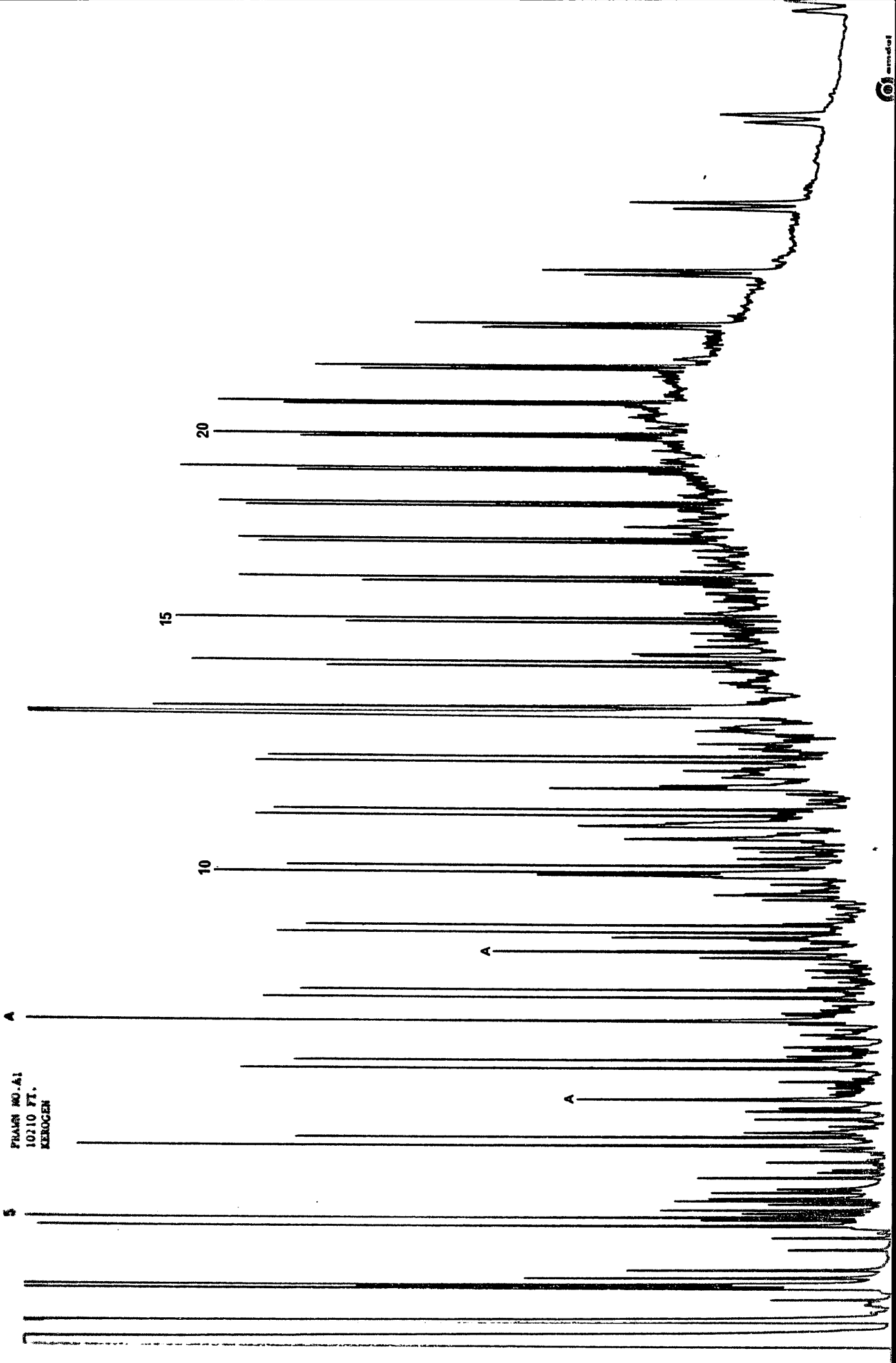


FIGURE 20

FRAME NO. A1
10280 FT.
KEROGEN

