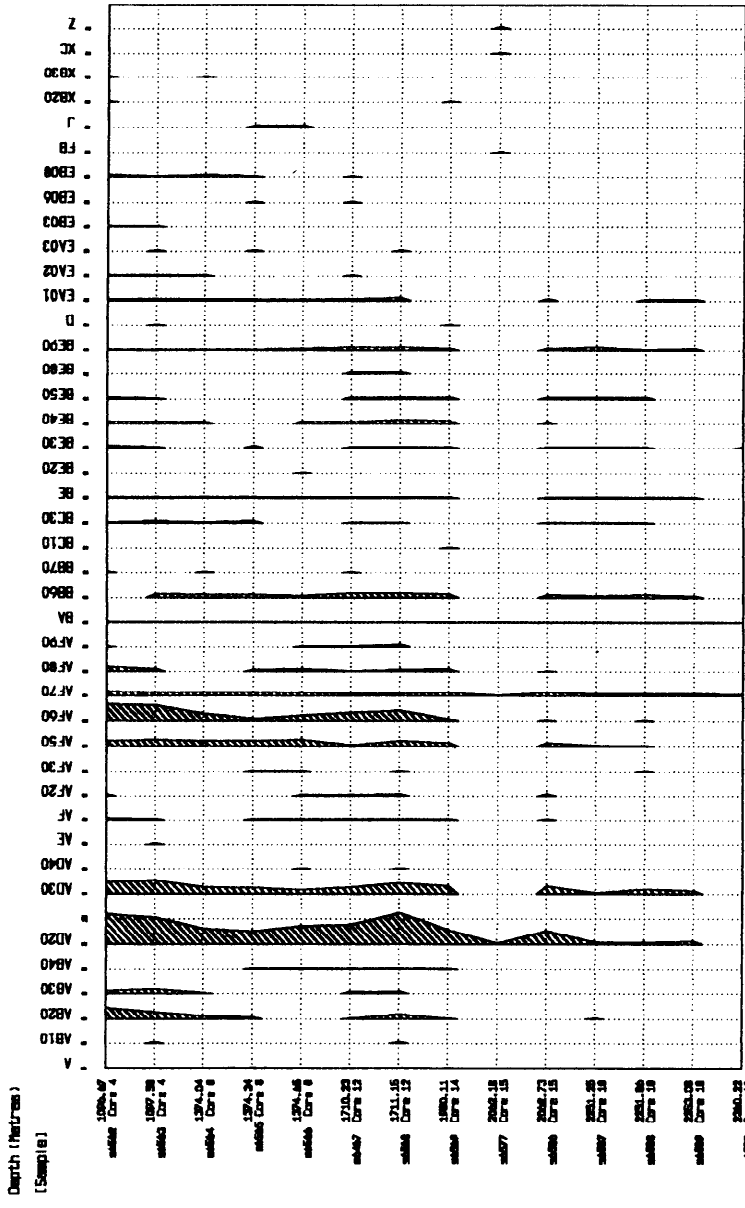


Casterton #1 Phylo-Group Diversity

Spore/Pollen Distribution Chart
(Diversity)

- Land Plant Spores
- ? Bryophyta
- Hepaticeae
- Anthocerotae
- Sporidiales
- Lycopodiales
- Selaginellales
- ARTHROPHYTA
- PTEROPHYTA
- Extinct Ferns
- Dipterocarpaceae
- Osundales
- Schizales
- Cyathales
- Dicraniales
- Hydropteridales
- GYMNOSPERMS - unclassified
- Pallasiaceae/Corymbolaceae
- Coniariales
- Cyclophyta
- CONIFEROPHYTA
- Protodermis (Vol/Lobster/Lord)
- Podocarpaceae
- Araucariaceae
- Pinaceae
- Fungi + Protolungi
- Fungal Spores
- Labiophytids
- Taxodiaceae
- Cymeliales
- Botryococcales
- Zygnematales - Sphaerocarpales
- MICROHYSTRIDIUM GROUP
- Miscellanea
- MESOZOIC
- PALAEZOIC
- CONTAMINATES
- Ecological Group

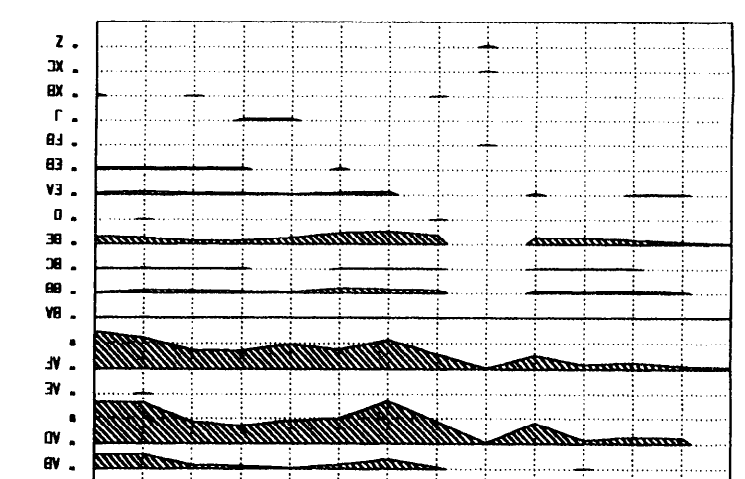


APG Consortium
E-INDEX

Casterton #1 Phylo-Group Diversity

Spore/Pollen Distribution Chart
(Diversity)

- Land Plant Spores
- BRYOPHYTA
- LYCOPHYTA
- ARTHROPHYTA
- PTEROPHYTA
- GYMNOSPERMS - unclassified
- PENIDOSPHEROPHYTA
- CYCADOPHYTA
- CONIFEROPHYTA
- Fungal Spores
- PRASINOPHYTA
- CHLOROPHYTA
- MICROHYSTRIDIUM GROUP
- Miscellanea
- RECORDED FORMS
- CONTAMINATES
- Ecological Group



Casterton #1 Phylo-Group Diversity

Spore/Pollen Distribution Chart
(Diversity)

DEPT. NAT. RES & ENV
PE800758

- Land Plant Spores
- Dryopteridales
- Fungal Spores
- Algal Spores
- Sporose Acritarchs
- Miscellanea
- NON-EMBIOTIC
- Ecological

