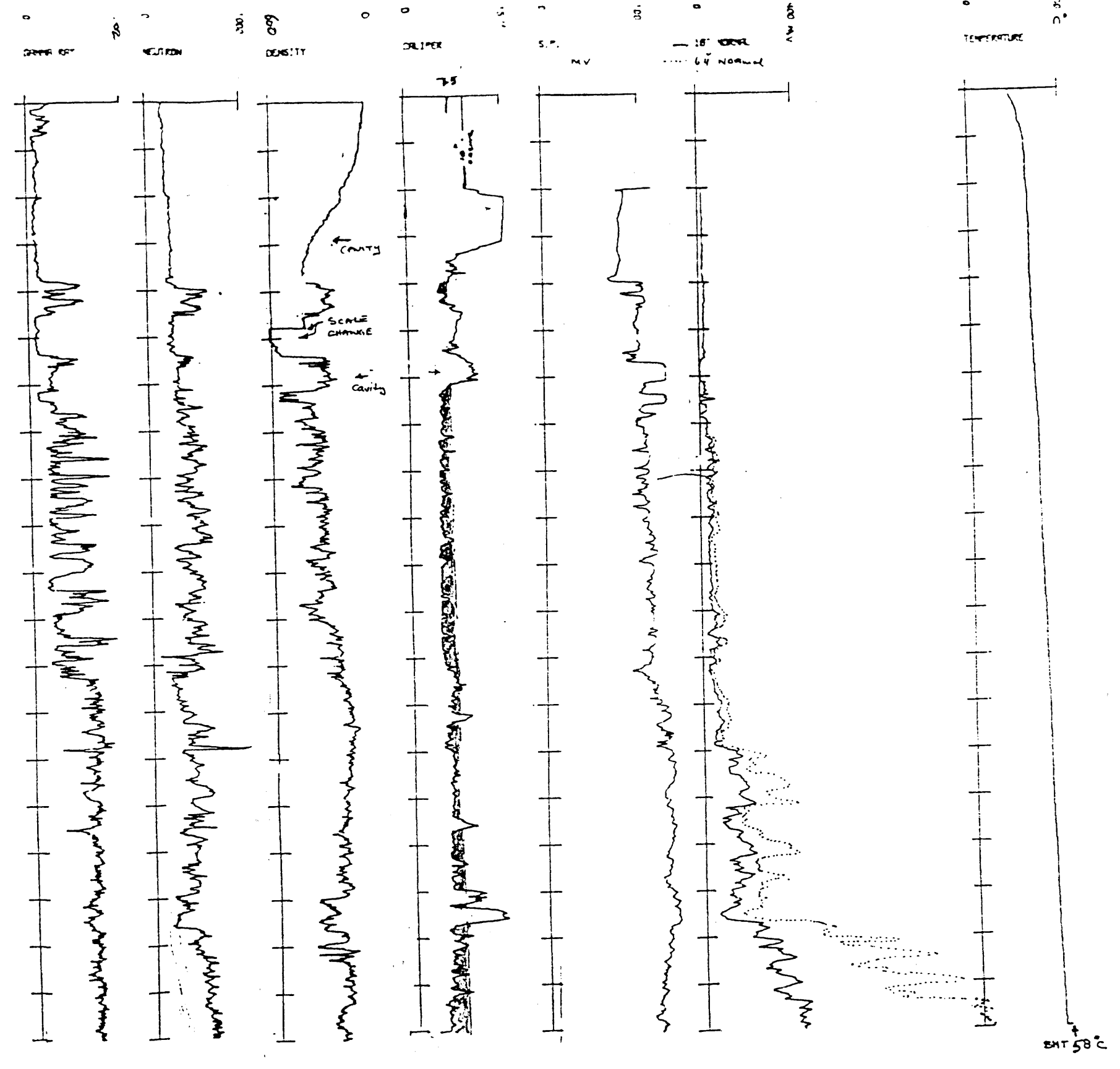
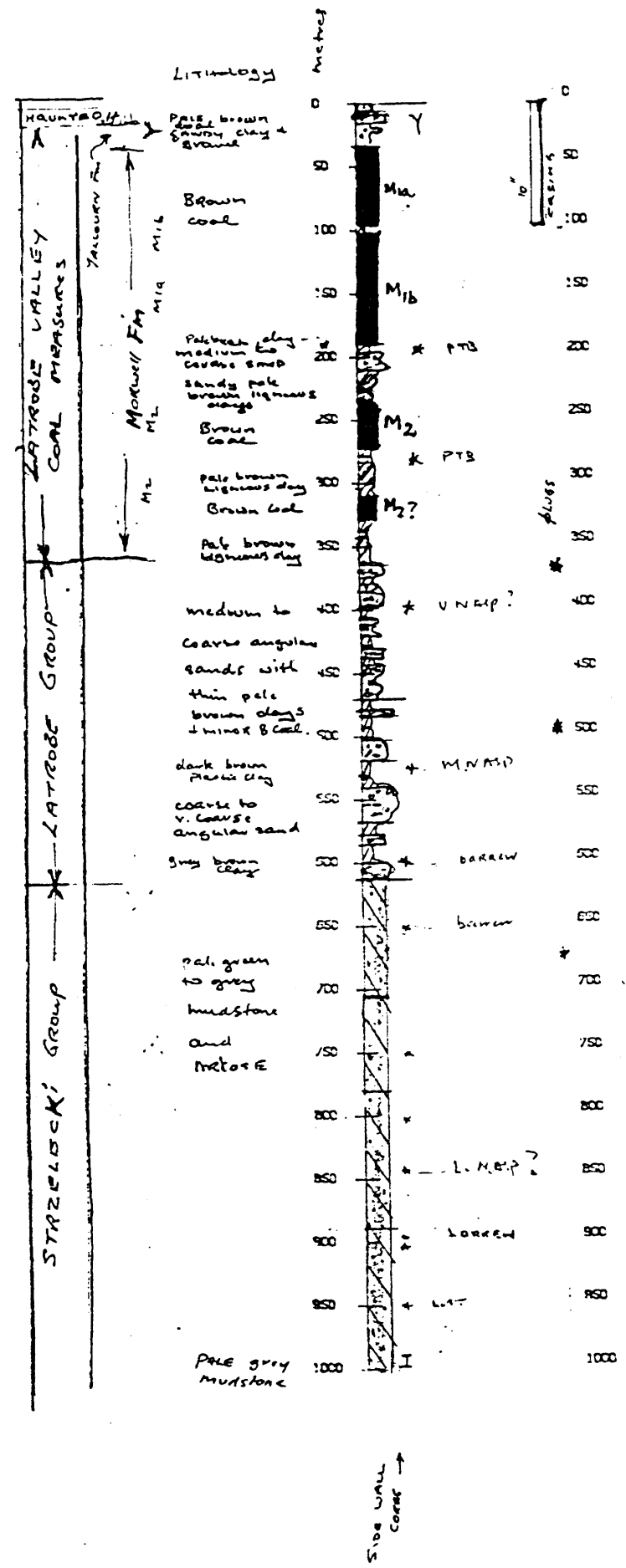


# COMPLETION REPORT

HAZELWOOD 1395	
DRILL NO 29-81-2	
Commenced 1-7-81	
Completed 9-10-81	
TOTAL DEPTH	1004 m
SURFACE ELEV.	623 m
LOCATION	
E	445165.5
N	5762500.0
ZONE 55	
CORE INTERVALS	
SIDEWALL	
	m
	194
	274
	397.5
	530
	592
	650
	750
	800
	840
	885
	900
	950
CORE AT 999 m	
CEMENT PLUGS	
AT 380 m	
	500
	650
PALYNOLOGY	
10 SAMPLES PER PREPARED	
Compiled by JUNE BL	
B. C. Thompson	
BHT: 58°C AT 1000m	



PTB  
V. N.M.S.P.  
M. N.M.S.P.

