



FORAMINIFERAL SEQUENCE
and CORRELATION of
SPEKE # 1,
GIPPSLAND BASIN.

for: AUSTRALIAN AQUITAINE PETROLEUM PTY. LTD.

September 12, 1984.

David Taylor,
23 Ballast Point Road,
BIRCHGROVE, NSW, 2041,
AUSTRALIA.

(02)810 5643

BIOSTRATIGRAPHY from sidewall cores & inferred from E-logs. Depth in metres for sample at base of zone (refer Table 3).		E-LOG PICKS		PALEOENVIRONMENTS (refer Table 4)	
				Estimated Paleodepths (in metres) 0 100 200	
MID	-1174	C/D			Progradation of outer shelf & shelf edge with high energy, biogenic carbonate deposition.
MIOCENE	-1284	D-2			
	-1353	E-1			
		?	1380		
	-1449.5	E-2			High energy deposition of biogenic carbonate on upper continental slope.
EARLY MIOCENE	-1603	G			
		H-1	1cm:100m scale		
	-1712		CHANGE 4cm:100m		un-sampled
inferred EARLY MIOCENE to 2 LATE OLIGOCENE (unsampled)		H-1 to ?H-2?			
inferred EARLY OLIGOCENE (unsampled)		?J-2?			un-sampled
		?	1808		
LATE EOCENE	-1814	?K?	1820		Estuarine
MID EOCENE	-1835	?N?			Estuarine/lagoon with migrating barrier dunes
			1850		
					No foraminifera found in samples below 1835m

N.B. change of vertical scale at 1700m.
 ~~~? ~~~ possible hiatus (inferred)

TABLE 1: INTERPRETED FORAMINIFERAL SEQUENCE in SPEKE # 1.

David Taylor, September 12, 1984.

## INTRODUCTION

Twenty eight sidewall cores were examined from SPEKE # 1 between 2304 and 1051 metres.

No foraminifera were found in the basal four samples at 2304, 1946, 1907.5 and 1848.5 metres, although Helene Martin recovered dino-flagellates from four of these samples, thus indicating a marine influence.

Two sidewall cores were submitted, both with a labelled depth of 1825 metres. However, each represented a distinctly different facies; one being an estuarine glauconitic mudstone with Mid Eocene foraminifera, whilst the other, barren of foraminifera, was probably dune sand.

Unfortunately, there was a gap in sidewall core sampling over the interval between 1814 and 1712 metres. Within this interval, there obviously occurred the rapid transition from Eocene estuarine deposition to the deep oceanic sediments of the Oligocene and the related *Cobia* Event. The composition of this unsampled interval is deduced from E-log interpretation (refer Table 1) and correlations with sequences in adjacent wells (refer Table 2).

The following tables are embodied in this report:-

- TABLE 1:      *INTERPRETED FORAMINIFERAL SEQUENCE in SPEKE # 1 -*  
page 1 of this report.
- TABLE 2:      *INFERRED CORRELATION of SPEKE # 1 with ADJACENT WELLS*  
*for MID EOCENE to EARLY MIOCENE - based on Planktonic*  
*Foraminiferal Biostratigraphy (Letter Zones) and Rock*  
*Stratigraphy - refer this text and Table 1, with data*  
*on adjacent wells in Taylor & Martin, 1983 and Taylor,*  
*1983. - page 4 of this report.*
- TABLE 3:      *PLANKTONIC FORAMINIFERAL DISTRIBUTION - SPEKE # 1 -*  
back of this report.
- TABLE 4:      *BENTHONIC FORAMINIFERAL DISTRIBUTION and SEDIMENT GRAIN*  
*ANALYSIS - SPEKE # 1 - back of this report.*
- TABLE 5:      *MICROPALEONTOLOGICAL DATA SHEET with confidence ratings*  
*for biostratigraphic picks - back of this report.*

BIOSTRATIGRAPHY, PALEOENVIRONMENT and LITHO-UNIT CORRELATIONS.

EOCENE - 2304 to 1907 metres: Despite reports of dinoflagellates, no foraminifera were found at 2304, 1946 and 1907.5 metres, despite the presence of dinoflagellates in these samples (see Palynology Report). This suggests very transient marine influence.

MID EOCENE - ? ZONE N - 1848.5 to 1825 metres  $\equiv$  GURNARD FORMATION  
(E-log interval 1850 to 1820m).

Samples at 1835 and 1825 metres (mudstone SWC # 29/Run 2) contained poorly biostratigraphically diagnostic, planktonic assemblages, probably representing Zone N at the top of the Mid Eocene; possibly straddling the Mid/Late Eocene boundary. It is noted that these samples revealed a ?Middle *N. asperus* microfloral assemblage and was thus designated, following convention, as ?Late Eocene in the accompanying palynological report. However, the dating of Middle *N. asperus* Zone is a contentious one, yet to be resolved.

The benthonic assemblages in these two samples were also of low specific diversity, with assemblages characteristic of estuarine environments during a marine transgressive phase. The transient nature of the transgression is clearly illustrated by the distinctly differing lithologies of the two sidewall cores with the identical depth labels of 1825m. The mudstone of SWC 29/Run 2 is of estuarine, marginal marine origin, being a glauconitic Greensand with foraminiferal and dinoflagellate assemblages (see above and Palynology Report), whilst the quartz sands and limonitic clay of SWC 50/Run 22 is indicative of dune sands and barren of foraminifera, dinoflagellates or other marine indicators; such as glauconite. These two sidewall cores were a minute part of a spatially and temporally migrating barrier dune, estuarine/lagoonal system, analagous to the present day regime of the Gippsland shoreline (refer Taylor, 1983). This unit can be correlated with the GURNARD FORMATION on faunal and lithological grounds; particularly the presence of non calcareous Greensands (refer Table 2 this report and Taylor, l.c.).

LATE EOCENE - ? ZONE K - 1814 metres  $\equiv$  COLQUHOUN FORMATION (E-log  
interval 1820 to 1808m).

The single sample (at 1814m) has a poor planktonic fauna assignable to Zone K at the very top of the Late Eocene. The benthonic fauna is very similar to that of the Mid Eocene unit directly below, thus suggesting the repetition of paleoenvironmental conditions after a hiatus of 2 to 3 million years between the two units.

Most of the glauconite in this Late Eocene unit is oxidized, having the

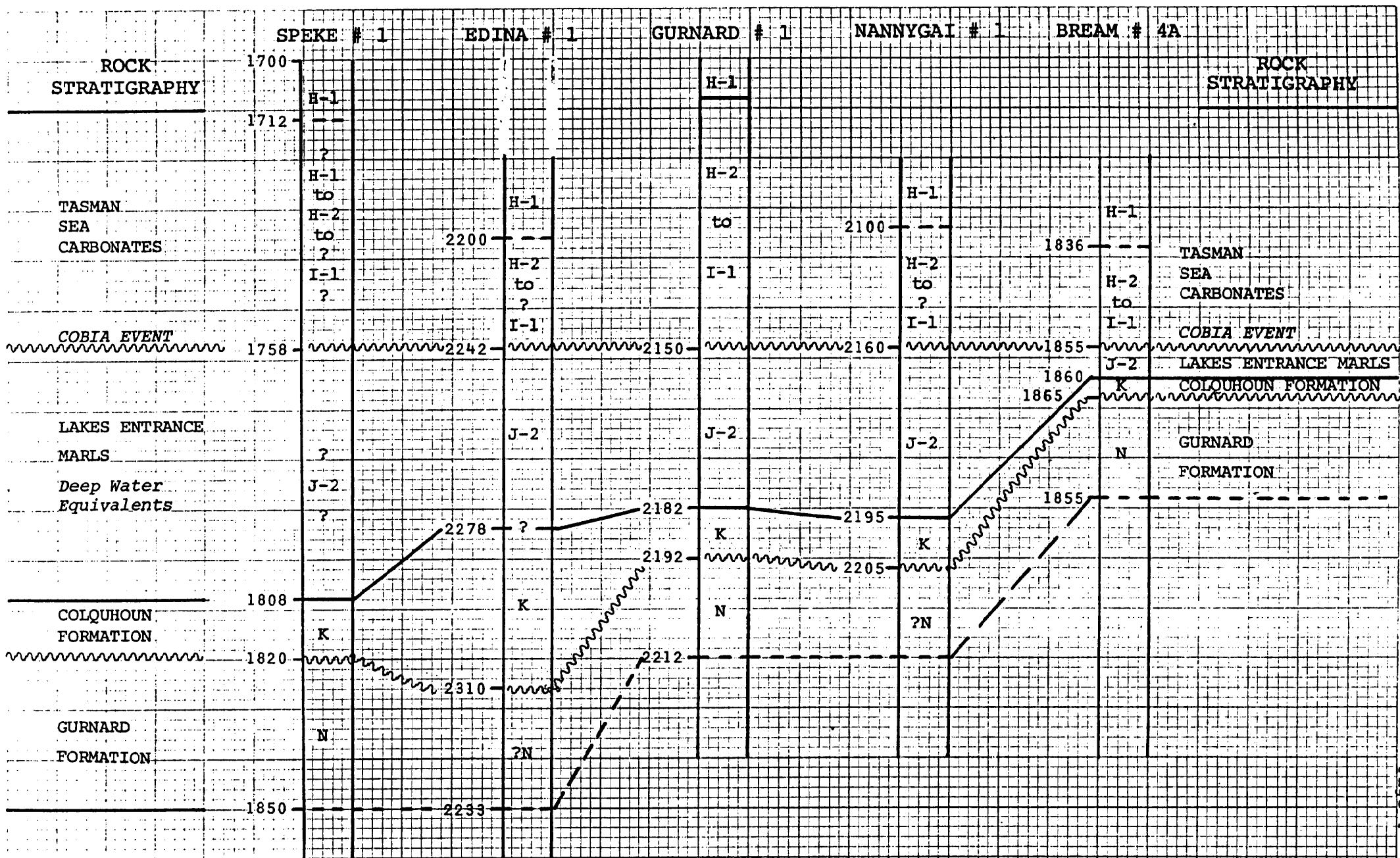


TABLE 2: INFERRED CORRELATION of SPEKE # 1 with ADJACENT WELLS for MID EOCENE to EARLY MIOCENE - based on Planktonic Foraminiferal Biostratigraphy (Letter Zones) and Rock Stratigraphy - refer this text and Table 1, with data on adjacent wells in Taylor & Martin, 1983 and Taylor, 1983.

David Taulor, September 12th, 1984.

appearance of *Brownsand*, rather than that of the *Greensand* of the unit below. Also the Late Eocene sediment is weakly calcareous. Therefore, this Late Eocene unit is equated with the *COLQUHOUN FORMATION* (refer Table 2 this report and Taylor, 1983).

UNSAMPLED INTERVAL between 1814 and 1712 metres: The identities of units within this sequence have been deduced from E-log characters (Table 1 this report) and a knowledge of the sequences in previously drilled wells, adjacent to SPEKE # 1 (refer Table 2 this report).

These units are, in all probability:-

LOWER OLIGOCENE - ZONE J-2  $\equiv$  LAKES ENTRANCE MARLS (E-Log interval 1808 to 1758m).

Probably a unit of calcareous shales, deposited in rapidly increasing depth, truncated by the mid to late Oligocene Hiatus of the *COBIA EVENT* at 1758m. Table 2 shows that this unit was thicker in SPEKE than in other wells. This may be a reflection of variation in depositional rates relative to the shoreline. For instance, the *COLQUHOUN FORMATION* may have persisted longer in EDINA and in fact, may have been deposited in part during J-2 times; this infers that EDINA was closer to availability of terrigenous detritus than SPEKE.

LATE OLIGOCENE to EARLY MIOCENE - ZONES I-1, H-2 and H-1 (E-log interval 1728 to 1712m).

No doubt the interval contained the oceanic *TASMAN SEA CARBONATES*; a conclusion supported by the correlation Table 2 and remarks below regarding the EARLY to MID MIOCENE sequence.

EARLY to MID MIOCENE - ZONES H-1 to D-2 to ? ZONE C.

There appears to have been uninterrupted sedimentation from the Early to Mid Miocene, although assemblages representing every Zone could not be identified due to extreme carbonate diagenesis at some levels; for example, Zone F could not be designated. Richly biogenic carbonate deposition was on the upper continental slope during the Early Miocene, with faunal evidence suggesting progradation of the shelf edge in the Mid Miocene (note E-log change at 1380m). This pattern of shelf progradation was apparent also in the adjacent wells, with sedimentation on the Oligo/Miocene boundary commencing in fairly deep water and rapidly shallowing during the Early Miocene. Thus the unsampled Oligo/Miocene, between 1758 and 1712m in SPEKE # 1 may have been of deeper water origin than that evident at and above 1712m.

REFERENCES.

TAYLOR, David & MARTIN, Helene A, 1983 - Biostratigraphic and Paleoenvironmental Data Package # 1 for Gippsland Basin. for Australian Aquitaine Petroleum Pty. Ltd. July 20, 1983.

TAYLOR, David, 1983 - Time-Facies Relationships of Eocene Marginal-Marine Sediments - Gippsland Basin. for Australian Aquitaine Petroleum Pty. Ltd. November 29, 1983.

| SIDEWALL CORES<br>Depth in metres<br>*2 samples labelled<br>with same depth | PLANKTONIC FORAMINIFERAL BIOSTRATIGRAPHY |                    |                                                |                       |                                   |                                |                           |                             |                          |                        |                        |                                |                        |                                    |                                |                         |                                 |                      |                              |                          |                     |                             |                           |                          |                             |                            |                       |                         |                      |      |                      |     |        |               |                                                                                                                                                                                          |
|-----------------------------------------------------------------------------|------------------------------------------|--------------------|------------------------------------------------|-----------------------|-----------------------------------|--------------------------------|---------------------------|-----------------------------|--------------------------|------------------------|------------------------|--------------------------------|------------------------|------------------------------------|--------------------------------|-------------------------|---------------------------------|----------------------|------------------------------|--------------------------|---------------------|-----------------------------|---------------------------|--------------------------|-----------------------------|----------------------------|-----------------------|-------------------------|----------------------|------|----------------------|-----|--------|---------------|------------------------------------------------------------------------------------------------------------------------------------------------------------------------------------------|
|                                                                             | <i>G'ina angiporooides minima</i>        | <i>G'alia nana</i> | <i>G'ina &amp; G'alia spp indet (&lt;.2mm)</i> | <i>G'alia turgida</i> | <i>G'ina angiporooides (S.S.)</i> | <i>G'quad dehiscens (S.L.)</i> | <i>G'ooides parawoodi</i> | <i>G'ina woodi connecta</i> | <i>G'ina woodi woodi</i> | <i>G'ina pulloides</i> | <i>Cat. dissimilis</i> | <i>G'alia slakensis/mayeri</i> | <i>G'alia continua</i> | <i>G'alia zealandica incognita</i> | <i>G'quad dehiscens (S.S.)</i> | <i>G'ina ciferensis</i> | <i>G'alia zealandica (S.S.)</i> | <i>G'quad advena</i> | <i>G'ooides subquadratus</i> | <i>G'ooides trilobus</i> | <i>G'alia bella</i> | <i>G'alia miozea miozea</i> | <i>G'alia praescitula</i> | <i>Præorb. glomerosa</i> | <i>G'ooides bisphericus</i> | <i>G'alia periphetonda</i> | <i>Orb. suturalis</i> | <i>G'quad altispira</i> | <i>Orb. universa</i> | ZONE | Sample Depth at Base | AGE |        |               |                                                                                                                                                                                          |
| 1051.0 →                                                                    |                                          |                    | D                                              |                       |                                   |                                | x                         |                             |                          |                        |                        |                                |                        |                                    |                                |                         |                                 |                      |                              |                          |                     |                             |                           |                          |                             |                            |                       |                         |                      |      | C/D                  |     |        |               |                                                                                                                                                                                          |
| 1125.0 →                                                                    |                                          |                    |                                                |                       |                                   |                                |                           |                             |                          |                        |                        |                                |                        |                                    |                                |                         |                                 |                      |                              |                          |                     |                             |                           |                          |                             |                            |                       |                         |                      |      |                      |     |        |               |                                                                                                                                                                                          |
| 1174.0 →                                                                    |                                          |                    | D                                              |                       |                                   |                                |                           |                             |                          |                        |                        |                                |                        |                                    |                                |                         |                                 |                      |                              |                          |                     |                             |                           |                          |                             |                            |                       |                         |                      |      |                      | D-2 | 1174   | MIOCENE       |                                                                                                                                                                                          |
| 1284.5 →                                                                    |                                          |                    | D                                              |                       |                                   |                                | x                         |                             |                          |                        |                        |                                |                        |                                    |                                |                         |                                 |                      |                              |                          |                     |                             |                           |                          |                             |                            |                       |                         |                      |      |                      | E-1 | 1284   |               |                                                                                                                                                                                          |
| 1353.0 →                                                                    |                                          |                    |                                                |                       |                                   |                                |                           |                             |                          |                        |                        |                                |                        |                                    |                                |                         |                                 |                      |                              |                          |                     |                             |                           |                          |                             |                            |                       |                         |                      |      |                      |     | 1353   |               |                                                                                                                                                                                          |
| 1380.0 →                                                                    |                                          |                    | D                                              |                       |                                   |                                |                           |                             |                          |                        |                        |                                |                        |                                    |                                |                         |                                 |                      |                              |                          |                     |                             |                           |                          |                             |                            |                       |                         |                      |      |                      |     |        |               |                                                                                                                                                                                          |
| 1399.0 →                                                                    |                                          |                    | D                                              |                       |                                   |                                | x                         | x                           |                          |                        |                        |                                |                        |                                    |                                |                         |                                 |                      |                              |                          |                     |                             |                           |                          |                             |                            |                       |                         |                      |      |                      |     |        |               |                                                                                                                                                                                          |
| 1427.0 →                                                                    |                                          |                    | D                                              |                       |                                   |                                |                           |                             |                          |                        |                        |                                |                        |                                    |                                |                         |                                 |                      |                              |                          |                     |                             |                           |                          |                             |                            |                       |                         |                      |      |                      |     |        |               |                                                                                                                                                                                          |
| 1449.5 →                                                                    |                                          |                    |                                                |                       |                                   |                                |                           |                             |                          |                        |                        |                                |                        |                                    |                                |                         |                                 |                      |                              |                          |                     |                             |                           |                          |                             |                            |                       |                         |                      |      |                      | E-2 | 1449.5 |               |                                                                                                                                                                                          |
| 1480.0 →                                                                    |                                          |                    | indet.                                         |                       |                                   |                                |                           |                             |                          |                        |                        |                                |                        |                                    |                                |                         |                                 |                      |                              |                          |                     |                             |                           |                          |                             |                            |                       |                         |                      |      |                      |     |        |               |                                                                                                                                                                                          |
| 1536.0 →                                                                    |                                          |                    | indet                                          |                       |                                   |                                |                           |                             |                          |                        |                        |                                |                        |                                    |                                |                         |                                 |                      |                              |                          |                     |                             |                           |                          |                             |                            |                       |                         |                      |      |                      |     |        |               |                                                                                                                                                                                          |
| 1603.0 →                                                                    |                                          |                    |                                                |                       |                                   |                                | x                         | x                           | x                        |                        | x                      | x                              |                        |                                    |                                | x                       |                                 |                      |                              |                          |                     |                             |                           |                          |                             |                            |                       |                         |                      |      |                      | G   | 1603   | EARLY MIOCENE | KEY:<br>° = <20 specimens<br>x = >20 specimens<br>D = Dominant >60% specimens<br>www = possible hiatus<br>indet = indeterminate taxa due to diagenesis<br>N.F.F. = no foraminifera found |
| 1615.0 →                                                                    |                                          |                    | D                                              |                       |                                   |                                | x                         | x                           | x                        | x                      |                        |                                |                        |                                    |                                | x                       |                                 |                      |                              |                          |                     |                             |                           |                          |                             |                            |                       |                         |                      |      |                      |     |        |               |                                                                                                                                                                                          |
| 1625.0 →                                                                    |                                          |                    |                                                |                       |                                   |                                |                           | x                           | x                        | x                      |                        | x                              | x                      |                                    |                                |                         |                                 |                      |                              |                          |                     |                             |                           |                          |                             |                            |                       |                         |                      |      |                      |     |        |               |                                                                                                                                                                                          |
| 1650.0 →                                                                    |                                          |                    |                                                |                       |                                   |                                |                           | x                           | x                        | x                      |                        |                                |                        |                                    |                                | x                       |                                 |                      |                              |                          |                     |                             |                           |                          |                             |                            |                       |                         |                      |      |                      |     |        |               |                                                                                                                                                                                          |
| 1675.0 →                                                                    |                                          |                    |                                                |                       |                                   |                                | x                         | x                           | x                        | x                      | x                      | x                              |                        |                                    |                                |                         |                                 |                      |                              |                          |                     |                             |                           |                          |                             |                            |                       |                         |                      |      |                      |     |        |               |                                                                                                                                                                                          |
| 1678.0 →                                                                    |                                          |                    |                                                |                       |                                   |                                |                           | x                           | x                        | x                      |                        | x                              | x                      |                                    |                                | x                       |                                 |                      |                              |                          |                     |                             |                           |                          |                             |                            |                       |                         |                      |      |                      |     |        |               |                                                                                                                                                                                          |
| 1700.0 →                                                                    |                                          |                    |                                                |                       |                                   |                                |                           | x                           | x                        | x                      |                        |                                |                        |                                    |                                |                         |                                 |                      |                              |                          |                     |                             |                           |                          |                             |                            |                       |                         |                      |      |                      |     |        |               |                                                                                                                                                                                          |
| 1705.5 →                                                                    |                                          |                    |                                                |                       |                                   |                                |                           | x                           | x                        | x                      |                        |                                |                        |                                    |                                |                         |                                 |                      |                              |                          |                     |                             |                           |                          |                             |                            |                       |                         |                      |      |                      |     |        |               |                                                                                                                                                                                          |
| 1712.0 →                                                                    |                                          |                    |                                                |                       |                                   |                                | x                         |                             |                          |                        |                        |                                |                        |                                    |                                |                         |                                 |                      |                              |                          |                     |                             |                           |                          |                             |                            |                       |                         |                      |      |                      |     |        |               |                                                                                                                                                                                          |
| 1814.0 →                                                                    |                                          |                    | D                                              |                       |                                   |                                |                           |                             |                          |                        |                        |                                |                        |                                    |                                |                         |                                 |                      |                              |                          |                     |                             |                           |                          |                             |                            |                       |                         |                      |      |                      |     | 1712   |               |                                                                                                                                                                                          |
| *1825.0 →                                                                   |                                          |                    | x                                              | x                     | D                                 |                                |                           |                             |                          |                        |                        |                                |                        |                                    |                                |                         |                                 |                      |                              |                          |                     |                             |                           |                          |                             |                            |                       |                         |                      |      |                      |     | 1814   | LATE EOCENE   |                                                                                                                                                                                          |
| *1825.0 →                                                                   |                                          |                    | N.F.F.                                         |                       |                                   |                                |                           |                             |                          |                        |                        |                                |                        |                                    |                                |                         |                                 |                      |                              |                          |                     |                             |                           |                          |                             |                            |                       |                         |                      |      |                      |     |        |               |                                                                                                                                                                                          |
| 1835.0 →                                                                    |                                          |                    |                                                |                       |                                   |                                |                           |                             |                          |                        |                        |                                |                        |                                    |                                |                         |                                 |                      |                              |                          |                     |                             |                           |                          |                             |                            |                       |                         |                      |      |                      |     |        |               |                                                                                                                                                                                          |
| 1848.5 →                                                                    |                                          |                    | N.F.F.                                         |                       |                                   |                                |                           |                             |                          |                        |                        |                                |                        |                                    |                                |                         |                                 |                      |                              |                          |                     |                             |                           |                          |                             |                            |                       |                         |                      |      |                      |     | 1835   |               |                                                                                                                                                                                          |
| 1907.5 →                                                                    |                                          |                    | N.F.F.                                         |                       |                                   |                                |                           |                             |                          |                        |                        |                                |                        |                                    |                                |                         |                                 |                      |                              |                          |                     |                             |                           |                          |                             |                            |                       |                         |                      |      |                      |     |        |               |                                                                                                                                                                                          |
| 1946.0 →                                                                    |                                          |                    | N.F.F.                                         |                       |                                   |                                |                           |                             |                          |                        |                        |                                |                        |                                    |                                |                         |                                 |                      |                              |                          |                     |                             |                           |                          |                             |                            |                       |                         |                      |      |                      |     |        |               |                                                                                                                                                                                          |
| 2304.0 →                                                                    |                                          |                    | N.F.F.                                         |                       |                                   |                                |                           |                             |                          |                        |                        |                                |                        |                                    |                                |                         |                                 |                      |                              |                          |                     |                             |                           |                          |                             |                            |                       |                         |                      |      |                      |     |        |               |                                                                                                                                                                                          |

TABLE 3: PLANKTONIC FORAMINIFERAL DISTRIBUTION - SPEKE # 1  
David Taylor, September 6, 1984.



| SIDEWALL CORES<br>Depth in metres<br>*2 samples labelled with<br>same depth | SELECTED BENTHONIC FORAMINIFERA |  |  |  |  |  |  |  |  |  |  |  |  |  |  |  |  |  |  |  | BIOGENIC COMPONENTS |               |                                                                                                                             |                                                                                              | RESIDUE LITHOLOGY                                                                                                                                                                              |                  | AGE<br>and<br>E-LOG<br>DEPTHS |                            |
|-----------------------------------------------------------------------------|---------------------------------|--|--|--|--|--|--|--|--|--|--|--|--|--|--|--|--|--|--|--|---------------------|---------------|-----------------------------------------------------------------------------------------------------------------------------|----------------------------------------------------------------------------------------------|------------------------------------------------------------------------------------------------------------------------------------------------------------------------------------------------|------------------|-------------------------------|----------------------------|
|                                                                             |                                 |  |  |  |  |  |  |  |  |  |  |  |  |  |  |  |  |  |  |  |                     |               |                                                                                                                             |                                                                                              | MINOR COMPONENTS                                                                                                                                                                               | MAJOR COMPONENTS |                               |                            |
|                                                                             |                                 |  |  |  |  |  |  |  |  |  |  |  |  |  |  |  |  |  |  |  | FORAM COUNT         | % PLANKTONICS | fish fragments<br>echinoid spines (worn)<br>bryozoal fragment (worn)<br>ostracods<br>molluscan fragments<br>sponge spicules | mica<br>carbonaceous material<br>pyrite<br>limonitic clay<br>m-c subrd-ang qtz<br>glauconite | qtz<br>siltst; clayst<br>recrystall.<br>bimicrite<br>frostcd &<br>fractured qtz<br>calcareous &<br>limonitic<br>clay sdst.<br>pellet<br>glauconite<br>frostcd &<br>fractured qtz<br>clay sdst. |                  |                               |                            |
| 1051.0                                                                      |                                 |  |  |  |  |  |  |  |  |  |  |  |  |  |  |  |  |  |  |  |                     | 2             | 2                                                                                                                           |                                                                                              |                                                                                                                                                                                                | A                | ψψψψψψψψψψψψψψψψ              | MID<br>MIOCENE             |
| 1125.0                                                                      |                                 |  |  |  |  |  |  |  |  |  |  |  |  |  |  |  |  |  |  |  |                     | 2             | 2                                                                                                                           |                                                                                              |                                                                                                                                                                                                | A                | ψψψψψψψψψψψψψψψψ              |                            |
| 1174.0                                                                      | INDET                           |  |  |  |  |  |  |  |  |  |  |  |  |  |  |  |  |  |  |  |                     | 2             | 2                                                                                                                           |                                                                                              |                                                                                                                                                                                                | C                | ψψψψψψψψψψψψψψψψ              |                            |
| 1284.5                                                                      |                                 |  |  |  |  |  |  |  |  |  |  |  |  |  |  |  |  |  |  |  |                     | 2             | 2                                                                                                                           |                                                                                              |                                                                                                                                                                                                | C                | ψψψψψψψψψψψψψψψψ              | 1380                       |
| 1353.0                                                                      |                                 |  |  |  |  |  |  |  |  |  |  |  |  |  |  |  |  |  |  |  |                     | 2             | 2                                                                                                                           |                                                                                              |                                                                                                                                                                                                | C                | ψψψψψψψψψψψψψψψψ              |                            |
| 1380.0                                                                      |                                 |  |  |  |  |  |  |  |  |  |  |  |  |  |  |  |  |  |  |  |                     | 2             | 2                                                                                                                           |                                                                                              |                                                                                                                                                                                                | A                | ψψψψψψψψψψψψψψψψ              |                            |
| 1399.0                                                                      |                                 |  |  |  |  |  |  |  |  |  |  |  |  |  |  |  |  |  |  |  |                     | 2             | 2                                                                                                                           |                                                                                              |                                                                                                                                                                                                | A                | ψψψψψψψψψψψψψψψψ              |                            |
| 1427.0                                                                      |                                 |  |  |  |  |  |  |  |  |  |  |  |  |  |  |  |  |  |  |  |                     | 2             | 2                                                                                                                           |                                                                                              |                                                                                                                                                                                                | A                | ψψψψψψψψψψψψψψψψ              |                            |
| 1449.5                                                                      |                                 |  |  |  |  |  |  |  |  |  |  |  |  |  |  |  |  |  |  |  |                     | 2             | 2                                                                                                                           |                                                                                              |                                                                                                                                                                                                | A                | ψψψψψψψψψψψψψψψψ              |                            |
| 1480.0                                                                      |                                 |  |  |  |  |  |  |  |  |  |  |  |  |  |  |  |  |  |  |  |                     | 2             | 2                                                                                                                           |                                                                                              |                                                                                                                                                                                                | A                | ψψψψψψψψψψψψψψψψ              |                            |
| 1536.0                                                                      |                                 |  |  |  |  |  |  |  |  |  |  |  |  |  |  |  |  |  |  |  |                     | 2             | 2                                                                                                                           |                                                                                              |                                                                                                                                                                                                | A                | ψψψψψψψψψψψψψψψψ              |                            |
| 1603.0                                                                      |                                 |  |  |  |  |  |  |  |  |  |  |  |  |  |  |  |  |  |  |  |                     | 2             | 2                                                                                                                           |                                                                                              |                                                                                                                                                                                                | A                | ψψψψψψψψψψψψψψψψ              |                            |
| 1615.0                                                                      |                                 |  |  |  |  |  |  |  |  |  |  |  |  |  |  |  |  |  |  |  |                     | 500           | 90                                                                                                                          |                                                                                              |                                                                                                                                                                                                | C                | ψψψψψψψψψψψψψψψψ              |                            |
| 1625.0                                                                      |                                 |  |  |  |  |  |  |  |  |  |  |  |  |  |  |  |  |  |  |  |                     | 1000          | 90                                                                                                                          |                                                                                              |                                                                                                                                                                                                | C                | φφφφφφφφφφφφφφφφ              |                            |
| 1650.0                                                                      |                                 |  |  |  |  |  |  |  |  |  |  |  |  |  |  |  |  |  |  |  |                     | 500           | 90                                                                                                                          |                                                                                              |                                                                                                                                                                                                | C                | ψψψψψψψψψψψψψψψψ              |                            |
| 1675.0                                                                      |                                 |  |  |  |  |  |  |  |  |  |  |  |  |  |  |  |  |  |  |  |                     | 2000          | 80                                                                                                                          |                                                                                              |                                                                                                                                                                                                | C                | φφφφφφφφφφφφφφφφ              |                            |
| 1678.0                                                                      |                                 |  |  |  |  |  |  |  |  |  |  |  |  |  |  |  |  |  |  |  |                     | 2000          | 80                                                                                                                          |                                                                                              |                                                                                                                                                                                                | C                | φφφφφφφφφφφφφφφφ              |                            |
| 1700.0                                                                      |                                 |  |  |  |  |  |  |  |  |  |  |  |  |  |  |  |  |  |  |  |                     | 500           | 60                                                                                                                          |                                                                                              |                                                                                                                                                                                                | C                | φφφφφφφφφφφφφφφφ              |                            |
| 1705.5                                                                      |                                 |  |  |  |  |  |  |  |  |  |  |  |  |  |  |  |  |  |  |  |                     | 1000          | 60                                                                                                                          |                                                                                              |                                                                                                                                                                                                | C                | ψψψψψψψψψψψψψψψψ              |                            |
| 1712.0                                                                      |                                 |  |  |  |  |  |  |  |  |  |  |  |  |  |  |  |  |  |  |  |                     | 500           | 40                                                                                                                          |                                                                                              |                                                                                                                                                                                                | D                | ψψψψψψψψψψψψψψψψ              |                            |
| 1814.0                                                                      |                                 |  |  |  |  |  |  |  |  |  |  |  |  |  |  |  |  |  |  |  |                     | ?             | 50                                                                                                                          |                                                                                              |                                                                                                                                                                                                | A                | φφφφφφφφφφφφφφφφ              | 1758 & 1808<br>LATE EOCENE |
| *1825.0                                                                     |                                 |  |  |  |  |  |  |  |  |  |  |  |  |  |  |  |  |  |  |  |                     | 500           | 50                                                                                                                          |                                                                                              |                                                                                                                                                                                                | A                | φφφφφφφφφφφφφφφφ              | MID<br>EOCENE              |
| *1825.0                                                                     | N.F.F.                          |  |  |  |  |  |  |  |  |  |  |  |  |  |  |  |  |  |  |  |                     | -             | -                                                                                                                           |                                                                                              |                                                                                                                                                                                                | r                | Δ-Δ-Δ-Δ-Δ-Δ-Δ-Δ-Δ-Δ           |                            |
| 1835.0                                                                      |                                 |  |  |  |  |  |  |  |  |  |  |  |  |  |  |  |  |  |  |  |                     | 100           | 40                                                                                                                          |                                                                                              |                                                                                                                                                                                                | A                | φφφφφφφφφφφφφφφφ              |                            |
| 1848.5                                                                      | N.F.F.                          |  |  |  |  |  |  |  |  |  |  |  |  |  |  |  |  |  |  |  |                     | -             | -                                                                                                                           |                                                                                              |                                                                                                                                                                                                | A                | Δ-Δ-Δ-Δ-Δ-Δ-Δ-Δ-Δ-Δ           |                            |
| 1907.5                                                                      | N.F.F.                          |  |  |  |  |  |  |  |  |  |  |  |  |  |  |  |  |  |  |  |                     | -             | -                                                                                                                           |                                                                                              |                                                                                                                                                                                                | A                | Δ-Δ-Δ-Δ-Δ-Δ-Δ-Δ-Δ-Δ           |                            |
| 1946.0                                                                      | N.F.F.                          |  |  |  |  |  |  |  |  |  |  |  |  |  |  |  |  |  |  |  |                     | -             | -                                                                                                                           |                                                                                              |                                                                                                                                                                                                | A                | Δ-Δ-Δ-Δ-Δ-Δ-Δ-Δ-Δ-Δ           |                            |
| 2304.0                                                                      | N.F.F.                          |  |  |  |  |  |  |  |  |  |  |  |  |  |  |  |  |  |  |  |                     | -             | -                                                                                                                           |                                                                                              |                                                                                                                                                                                                | A                | Δ-Δ-Δ-Δ-Δ-Δ-Δ-Δ-Δ-Δ           |                            |

KEY: • = <20 specimens  
x = >20 specimens  
D = Dominant >60% specimens  
N.F.F. = No foraminifera found  
INDET = indeterminate taxa due to diagenesis  
~~~~~ = possible hiatus

D = Dominant 5-10% grains
A = Abundant 1-5% grains
C = Common >20 grains
r = rare <20 grains

TABLE 4: BENTHONIC FORAMINIFERAL DISTRIBUTION and SEDIMENT GRAIN ANALYSIS - SPEKE # 1.
David Taylor, September 10, 1984.

TABLE 5

MICROPALAEONTOLOGICAL DATA SHEET

BASIN: GIPPSLAND ELEVATION: KB: 22.0m GL: -55.0m
 WELL NAME: SPEKE # 1 TOTAL DEPTH: 2770m

| AGE | FORAM. ZONULES | HIGHEST DATA | | | | LOWEST DATA | | | | | | |
|----------------|----------------|-----------------|----------------|-----------------|-----|--------------|-----------------|--------|-----------------|-----|--------------|--|
| | | Preferred Depth | Rtg | Alternate Depth | Rtg | Two Way Time | Preferred Depth | Rtg | Alternate Depth | Rtg | Two Way Time | |
| PLEIS-TOCENE | A ₁ | | | | | | | | | | | |
| | A ₂ | | | | | | | | | | | |
| PLIO-CENE | A ₃ | | | | | | | | | | | |
| | A ₄ | | | | | | | | | | | |
| | B ₁ | | | | | | | | | | | |
| | B ₂ | | | | | | | | | | | |
| MIOCENE | LATE | C | 1051 | 2 | | | | | | | | |
| | | MIDDLE | D ₁ | | | | | 1174 | 2 | | | |
| | | | D ₂ | 1284.5 | 1 | | | 1284.5 | 1 | | | |
| | EARLY | E ₁ | 1353 | 1 | | | 1353 | 1 | | | | |
| | | E ₂ | 1427 | 1 | | | 1449.5 | 0 | | | | |
| | | F | | | | | | | | | | |
| | | G | 1603 | 0 | | | 1603 | 0 | | | | |
| | | H ₁ | 1615 | 1 | | | 1712 | 1 | | | | |
| | OLIGOCENE | LATE | H ₂ | *(i) | | | | *(i) | | | | |
| | | | I ₁ | *(i) | | | | *(i) | | | | |
| | | | I ₂ | | | | | | | | | |
| | | EARLY | J ₁ | | | | | | | | | |
| J ₂ | | | *(ii) | | | | | *(ii) | | | | |
| K | | | 1815 | 2 | | | 1815 | 2 | | | | |
| EOC-ENE | Pre-K ¶ | 1825 | | | | 1835 | 2 | | | | | |

COMMENTS: Based on sidewall cores, depth in metres.

*Interval between 1712 and 1815m unsampled; deduced units = (i) between 1758 and 1712m; (ii) between 1808 and 1758m.

¶ Mid Eocene assemblage probably representing Zone N.

CONFIDENCE RATING: 0: SWC or Core - Complete assemblage (very high confidence).
 1: SWC or Core - Almost complete assemblage (high confidence).
 2: SWC or Core - Close to zonule change but able to interpret (low confidence).
 3: Cuttings - Complete assemblage (low confidence).
 4: Cuttings - Incomplete assemblage, next to uninterpretable or SWC with depth suspicion (very low confidence).

NOTE: If an entry is given a 3 or 4 confidence rating, an alternative depth with a better confidence rating should be entered, if possible. If a sample cannot be assigned to one particular zone, then no entry should be made, unless a range of zones is given where the highest possible limit will appear in one zone and the lowest possible limit in another.

DATA RECORDED BY: David Taylor.

DATE: September 12, 1984.

DATA REVISED BY: _____

DATE: _____

REFERENCES.

- COOKSON, I.C. & PIKE, K.M., 1953 - The Tertiary occurrence and distribution of *Podocarpus* (section *Dacrycarpus*) in Australia and Tasmania. *Aust. J. Bot.*-1; 71-82.
- DETTMANN, M.E., 1963 - Upper Mesozoic Microfloras from South-eastern Australia. *Proc. Roy. Soc. Vict.* 77; 1-40.
- LENTIN, J.K. & WILLIAMS, G.L., 1977 - Fossil Dinoflagellates: Index to Genera and Species. *Bedford Institute of Oceanography Report Series/B1-R-77-8 July, 1977.*
- MARTIN, H.A., 1973 - The Palynology of some Tertiary Pleistocene Deposits, Lachlan River Valley, New South Wales. *Aust. J. Bot. Suppl. Ser.* 6; 1-57.
- PARTRIDGE, A.D., 1976 - The Geological Expression of Eustacy in the Early Tertiary of the Gippsland Basin. *APEA Jl*, 16; 73-79.
- STOVER, L.E. & EVITT, R.W., 1978 - Analyses of Pre-Pleistocene organic-walled dinoflagellates. *Stanford University Publications, Geological Sciences Vol.* 15.
- STOVER, L.E., HELBY, R.J. & PARTRIDGE, A.D., 1979 - Introduction to Dinoflagellates. *Earth Resources Foundation, University of Sydney*, August 13-17, 1979.
- STOVER, L.E. & PARTRIDGE, A.D., 1973 - Tertiary and Late Cretaceous Spores and Pollen from the Gippsland Basin, Southeastern Australia. *Roy. Soc. Vict. Proc.*, 85; 237-286.
- STOVER, L.E. & PARTRIDGE, A.D., 1982 - Eocene spore-pollen from the Werillup Formation, Western Australia. *Palynology* 6: 69-95.

| AGE
(not to scale) | SPORE POLLEN
ZONES | DINOFLAGELLATE
ZONES | RANGE | |
|--|------------------------------|-----------------------------|----------------|--------------------------|
| LATE
EOCENE | Upper
<i>N. asperus</i> | <i>P. comptum</i> |

 | |
| | Middle
<i>N. asperus</i> | <i>C. incompositum</i> | | |
| ? ?
MID
EOCENE | Lower
<i>N. asperus</i> | <i>D. heterophlycta</i> |

 | |
| | | <i>W. echinosuturatum</i> | | |
| | | <i>A. diktyoplokus</i> | | |
| ? ? ?
? ? ?
? ? ?
EARLY
EOCENE | <i>P. asperopolus</i> | <i>K. edwardsii</i> |

 | |
| | | <i>K. thompsonae</i> | | |
| | | Upper
<i>M. diversus</i> | | |
| | <i>R. ornatum</i> | | | |
| | <i>R. waipawaense</i> | | | |
| | Middle
<i>M. diversus</i> | | | |
| ? ? ?
PALEOCENE | Lower
<i>M. diversus</i> | <i>A. hyperacanthum</i> |

 | |
| | Upper
<i>L. balmei</i> | <i>A. homomorphum</i> | | |
| | | Lower
<i>L. balmei</i> | | <i>E. crassitabulata</i> |
| | — ? — ? — | <i>T. evittii</i> | | |
| | MAASTRICHTIAN | <i>T. longus</i> | | <i>I. druggii</i> |
| | | | | |

FIGURE 2: DINOFLAGELLATE RANGE CHART. Ranges from Stover, Helby & Partridge, 1979.

AUSTRALIAN AQUITAINE PETROLEUM SPEKE # 1.

Helene A Martin, September 1984.

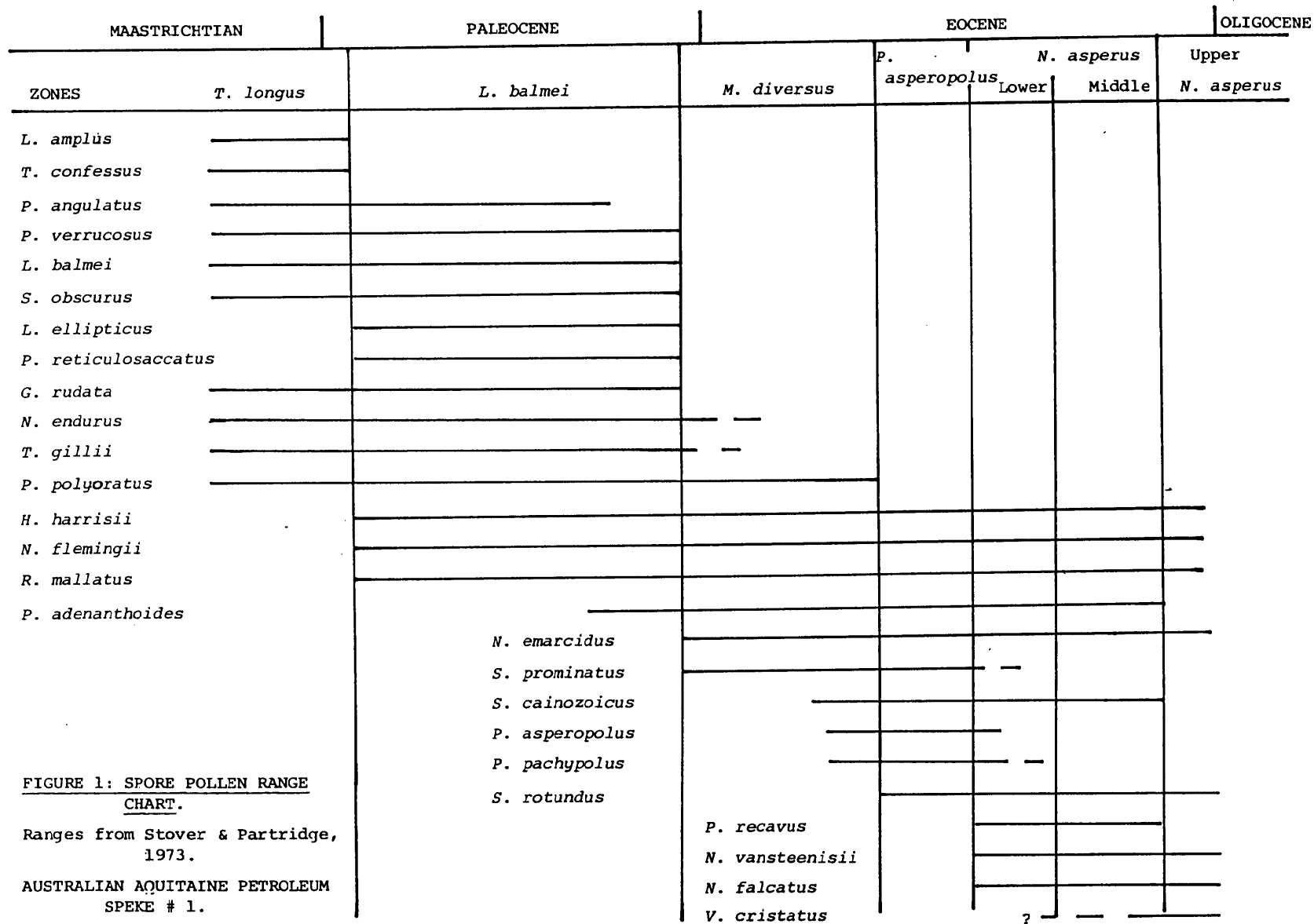


FIGURE 1: SPORE POLLEN RANGE
CHART.

Ranges from Stover & Partridge,
1973.

AUSTRALIAN AQUITAINE PETROLEUM
SPEKE # 1.