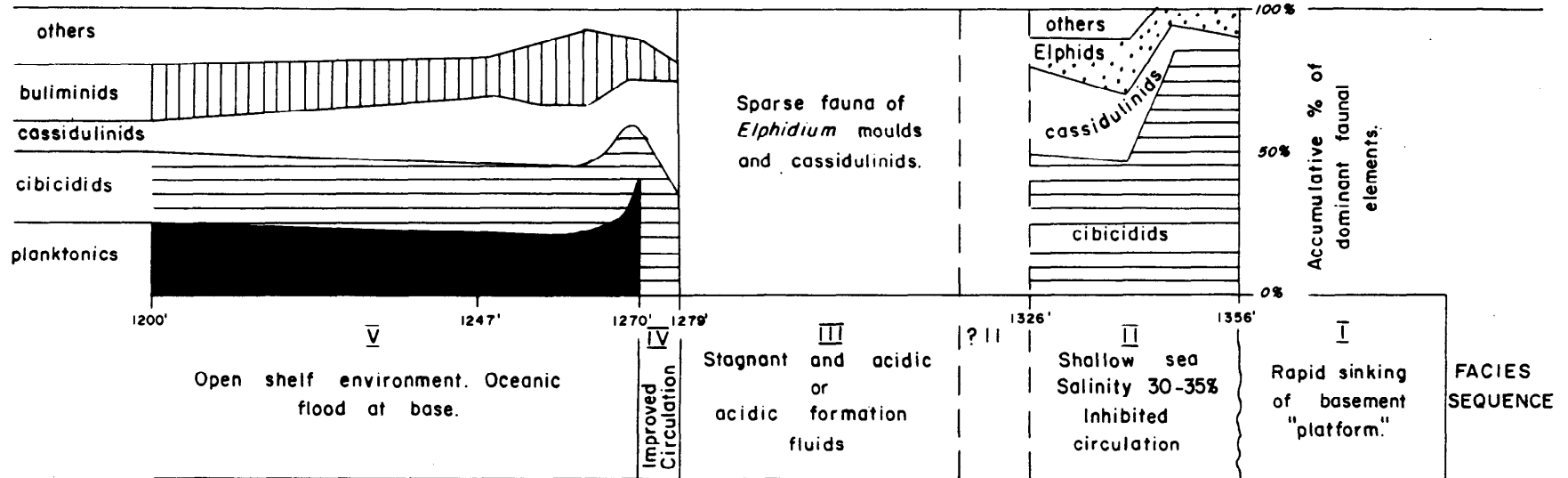
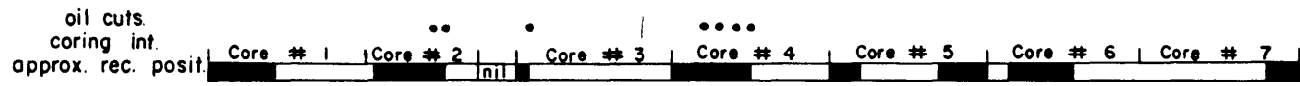
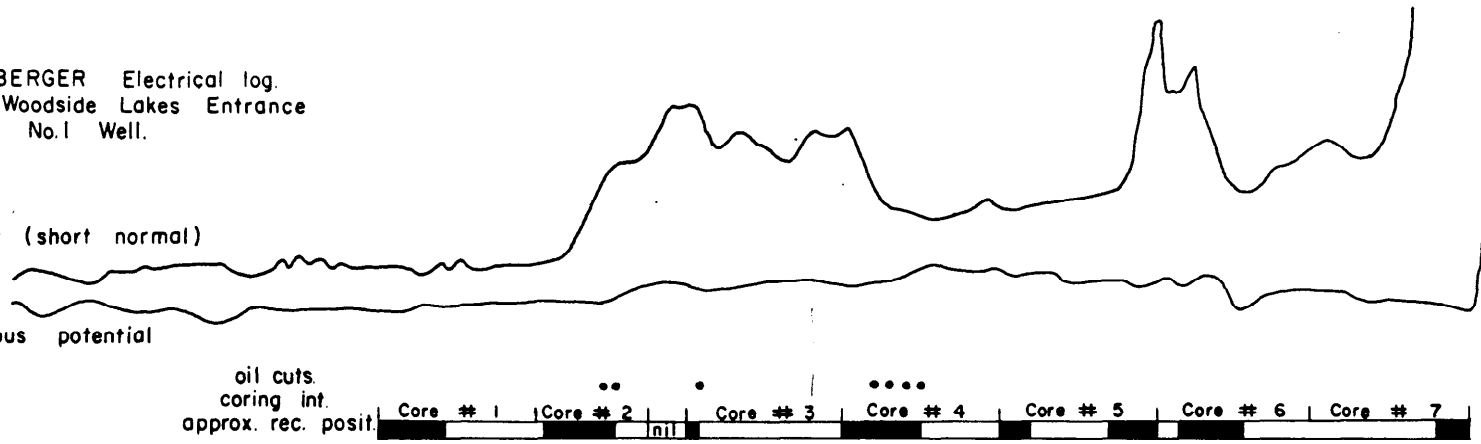


Lakes Entrance - 1.

SCHLUMBERGER Electrical log.
Run 2. Woodside Lakes Entrance
No. 1 Well.

Resistivity (short normal)

Spontaneous potential



PE990082

REVISIONS	Date	Remarks	Checked	FIG. 2-VERTICAL BIO-FACIES SEQUENCE COMPARED WITH E-LOG CHARACTERS WOODSIDE LAKES ENTRANCE No. 1 WELL	Surveyed	DEPARTMENT OF MINES VICTORIA	Issue No.
							Drawn <i>David Taylor</i>
				Traced S.W. & C.G.			
				Checked			
				Passed	Approved		

REFERENCE

SCALE