

BIOSTRATIGRAPHIC LOG - WOODSIDE SOUTH No.1



Drilled by:- Woodside (Lakes Entrance) Oil Company

Drilled in:- Gippsland Basin

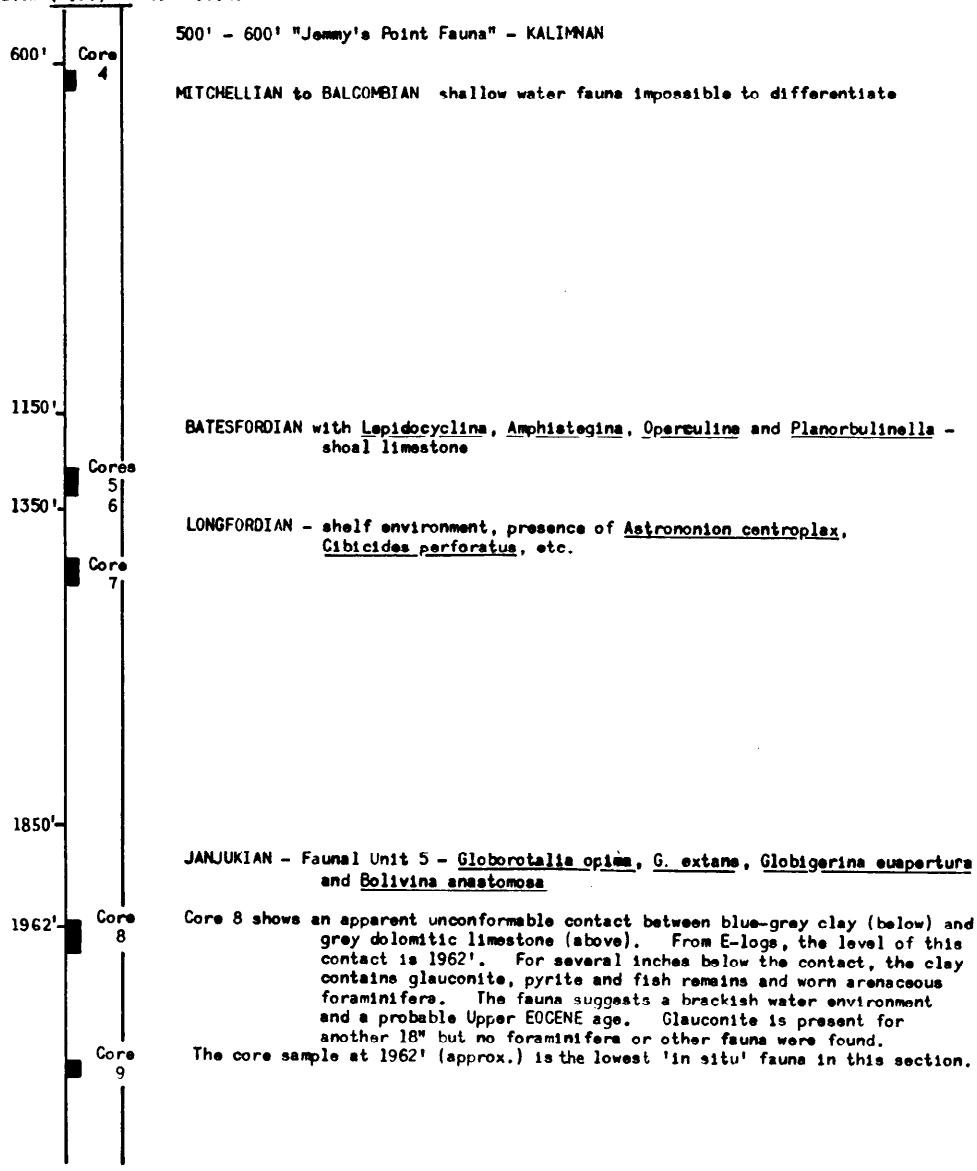
Casing program:- 13 3/8" set at 324'
9 1/2" set at 3,064'

Mud program: no information

Coring program:- as shown
no recovery cores 1 to 3

Mud contamination: heavy below 1960' and persisted
even below 9 1/2" casing shoe

Datum (K.B.) = +46' A.S.L.



T.D. 5819 feet.

David J. Taylor

27th July, 1965