

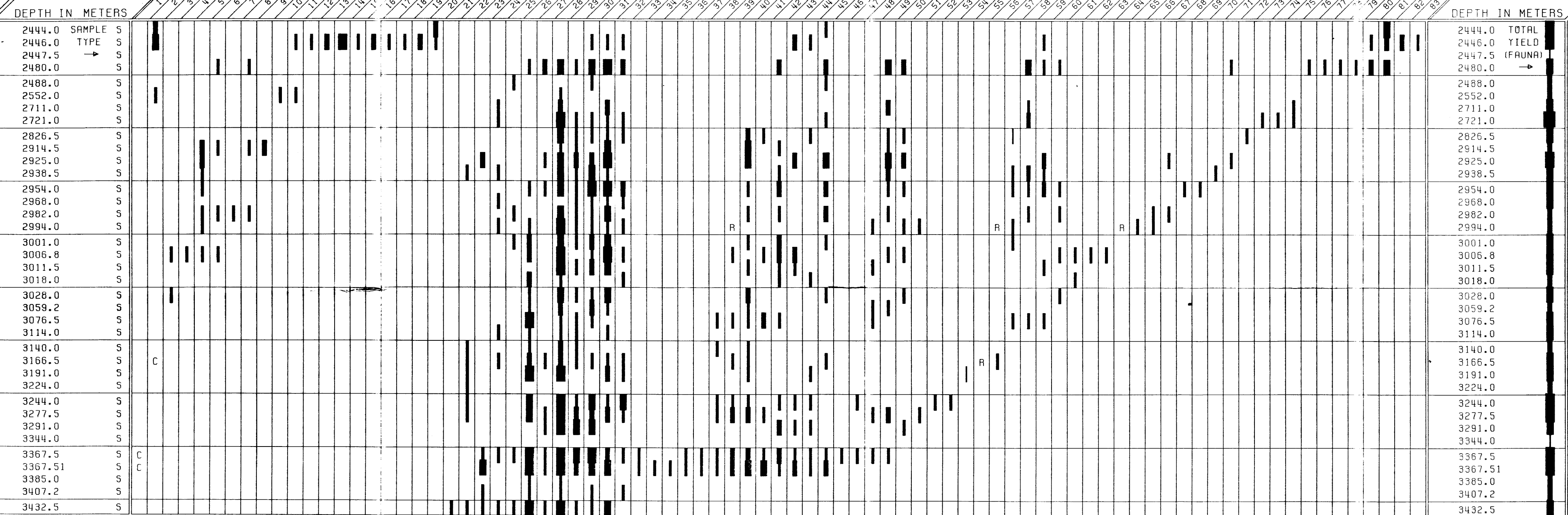
PALYNOLOGICAL RANGE CHART: TRUMPETER-1, GIPPSLAND BASIN.



SPECIES

LEGEND

VERY RARE, RARE, FEW, COMMON, ABUNDANT, VERY ABUNDANT, PRESENT, REWORKED, CONTAMINANT



DEPTH IN METERS

Table with columns for depth, sample type, and yield (fauna) for various depths from 2444.0 to 3432.5 meters.