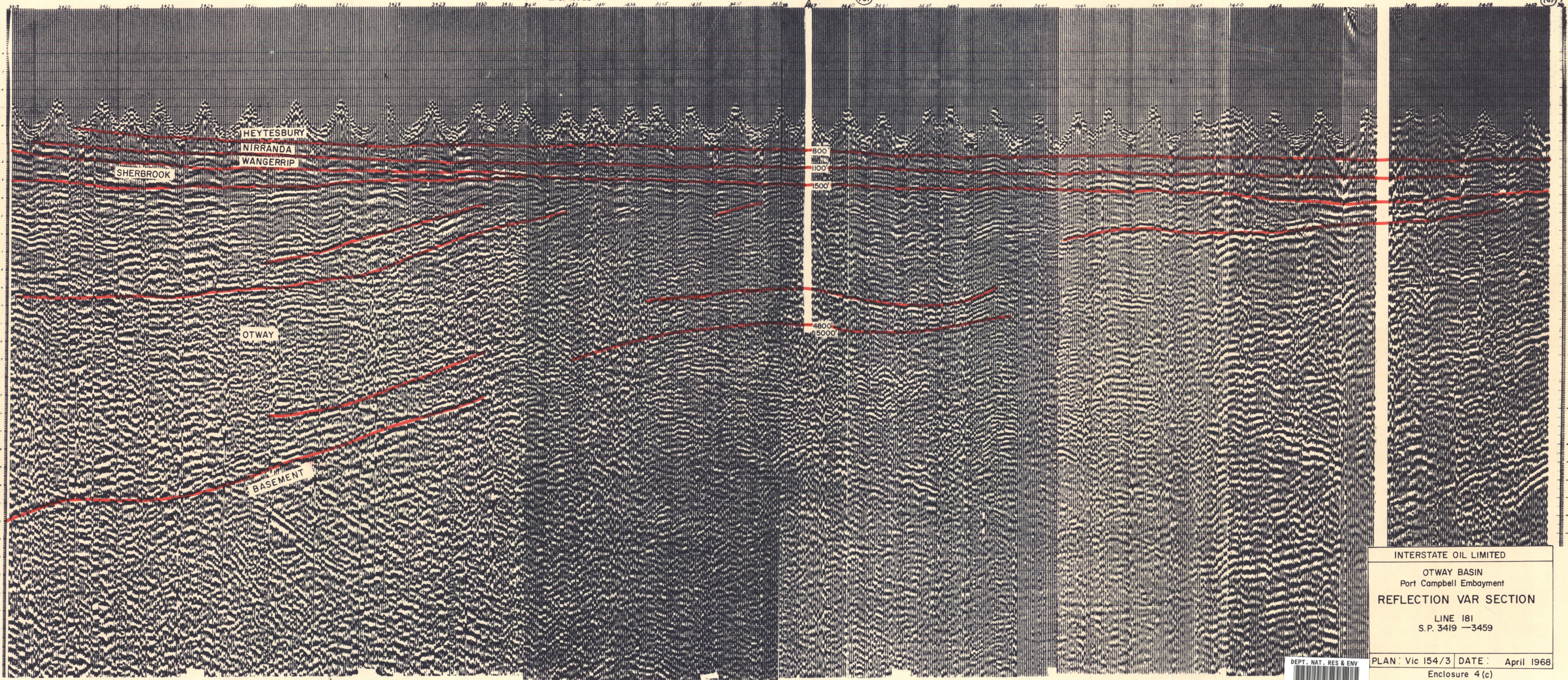


From Broken Hill Area, Pringlids Creek, New South Wales. From Broken Hill Area, Pringlids Creek, New South Wales. Plot on 68 A.V.E.

Purrumbete No.1 (Proposed)

(181)

(181)



INTERSTATE OIL LIMITED
 OTWAY BASIN
 Port Campbell Embayment
REFLECTION VAR SECTION
 LINE 181
 S.P. 3419 —3459

DEPT. NAT. RES & ENV
 PE907873

PLAN: Vic 154/3 DATE: April 1968
 Enclosure 4(c)