



Plate 1: 3060 - 3065 m

Reflected Light

Exsudatinite (primary oil; black veins) occurs with suberinite (moderate grey) in this vitrinite (light grey) rich shale.

Field Dimension: 0.26 x 0.18 mm

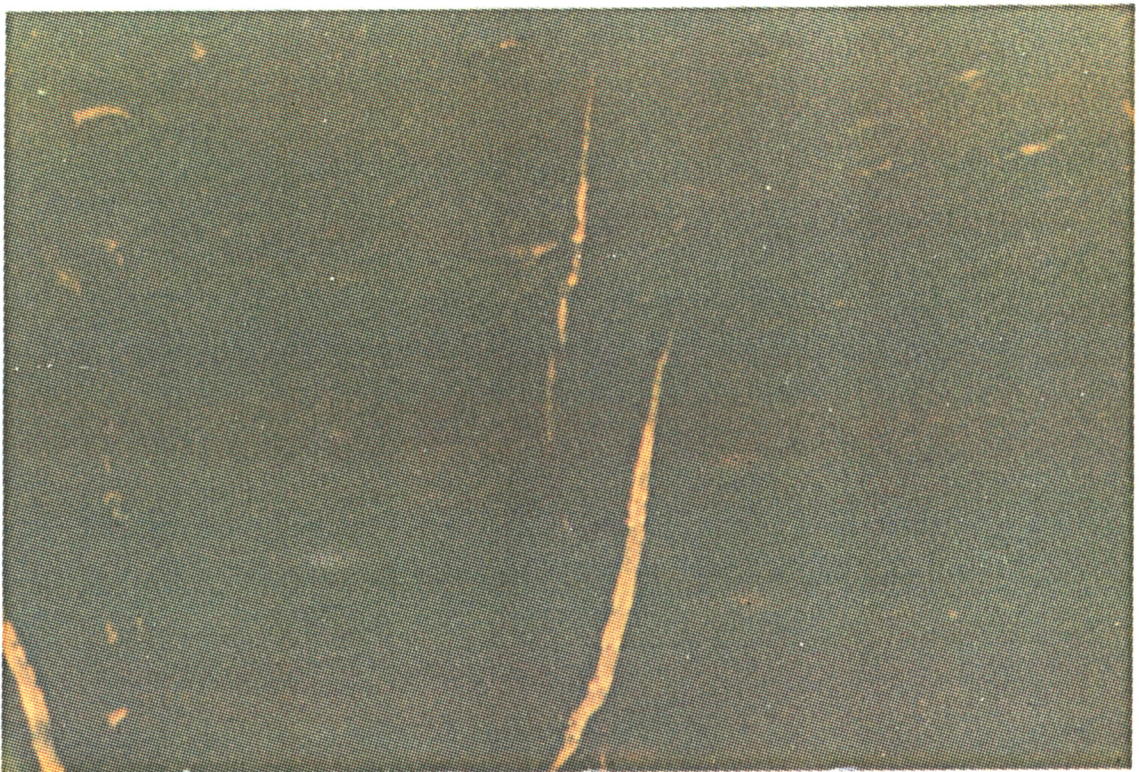


Plate 2: Same field as above

Fluorescence Mode

Exsudatinite and liptodetrinite have a moderate orange fluorescence whilst suberinite fluorescence is notably "dull".