

GEOGRAM*

(Synthetic Seismogram)

* A MARK OF SCHLUMBERGER

Company: BEACH PETROLEUM NL
 Well: WESTGATE - 1
 Field: WILDCAT
 Country: AUSTRALIA
 Reference No: 860311
 Date Logged: 14/03/88
 Location: 038 28' 01.07" S
 Elevation: KB 94.3 M
 Depth: MS
 Date Processed: 30/03/88
 Date: 000 to 302.00
 Log Interval: 0.5
 Scale: 1000
 Units: METRES

LOG INFORMATION
 Acquisition: M. HANSEN
 Location: G.A. Program Version: 282A
 Computer: M. HANSEN
 Operator: E.V. BARKER
 Elevation Above Mean Sea Level: 94.3 M
 Ground Reference Datum: 88.1 M
 Sonic Calibration By Check Sheet: YES
 Sonic Edited By Analyst: YES
 Two-Way Time Sample Interval: 2 ms
 Environment: onshore

This Vertical Depth Correction Applied: NO

Run	Date	Time	Start Depth	End Depth	Start Time	End Time
1	03/03/88	8:15	0.000 M	4.000 M	00:00:00	00:00:00
2	10/03/88	8:15	0.000 M	4.000 M	00:00:00	00:00:00

GENERAL MODEL ASSUMPTIONS
 Equal time after model of wave
 Phase acoustic waves at normal incidence
 No intrinsic attenuation
 POLARITY
 An opacity wave, reflected by an increase in acoustic impedance
 will appear as a white trough under normal polarity.
 SQUATNESS
 All signatures displayed in the Geogram results compared to a wavelet
 convolved with a reflection coefficient of 0.5. A decrease in acoustic
 impedance with depth.

Scale by interval 450 - 900 metres below KB
 Density log interval 200 - 350 metres below KB
 The scale - 500 1000

REMARKS

FIELD HERE

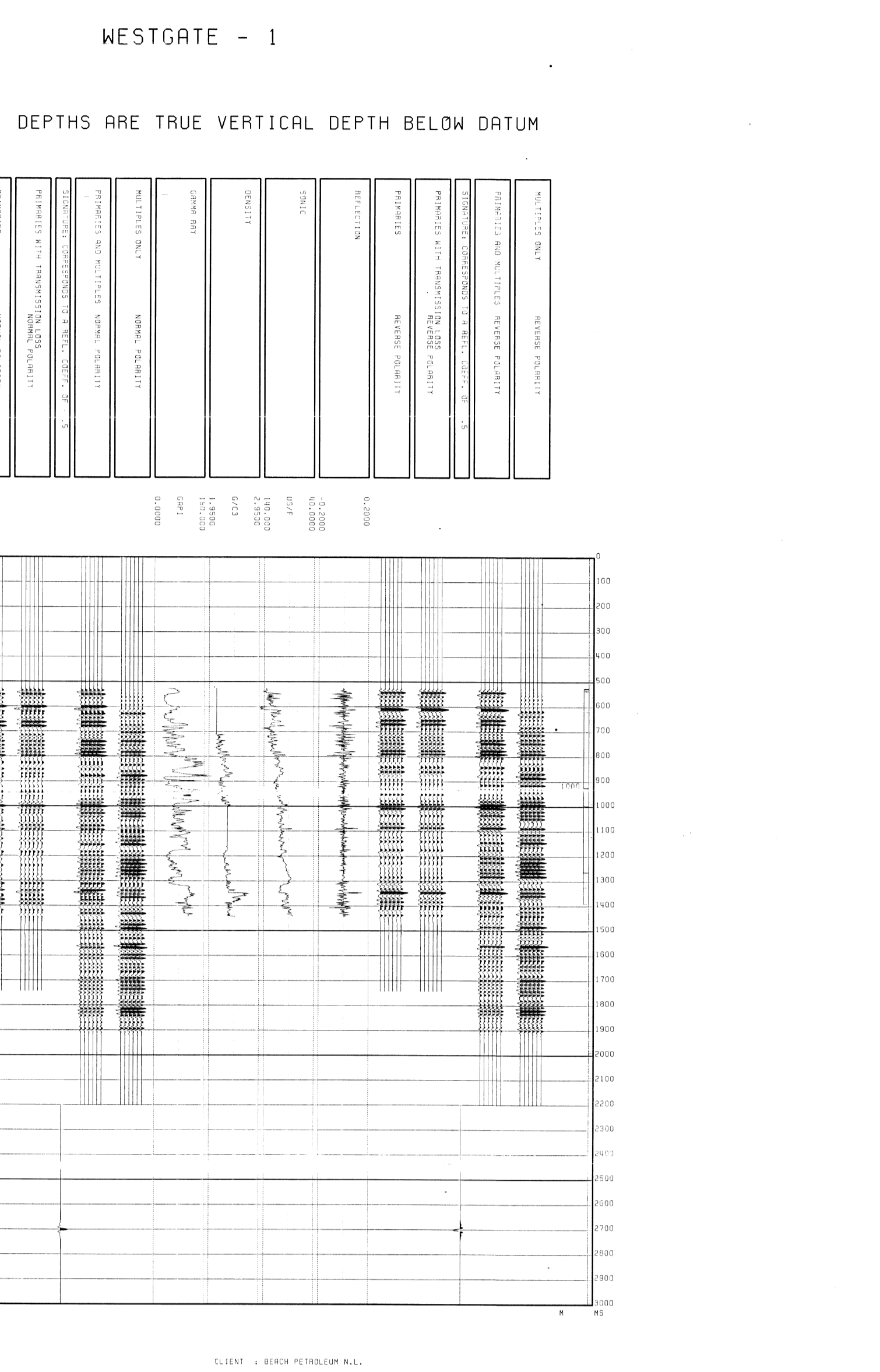
CLIENT : BEACH PETROLEUM N.L.
 FIELD : WILDCAT
 WELL : WESTGATE - 1

SYD-LOG-001 SYD-LOG-002 SYD-LOG-003 SYD-LOG-004 SYD-LOG-005 SYD-LOG-006 SYD-LOG-007 SYD-LOG-008 SYD-LOG-009 SYD-LOG-010

GEOGRAM FROM WST BUTTERWORTH FILTER WAVELET 12-80 HERTZ (48 DB/OCTAVE) NORMAL & REVERSE POLARITY

WESTGATE - 1

DEPTHS ARE TRUE VERTICAL DEPTH BELOW DATUM



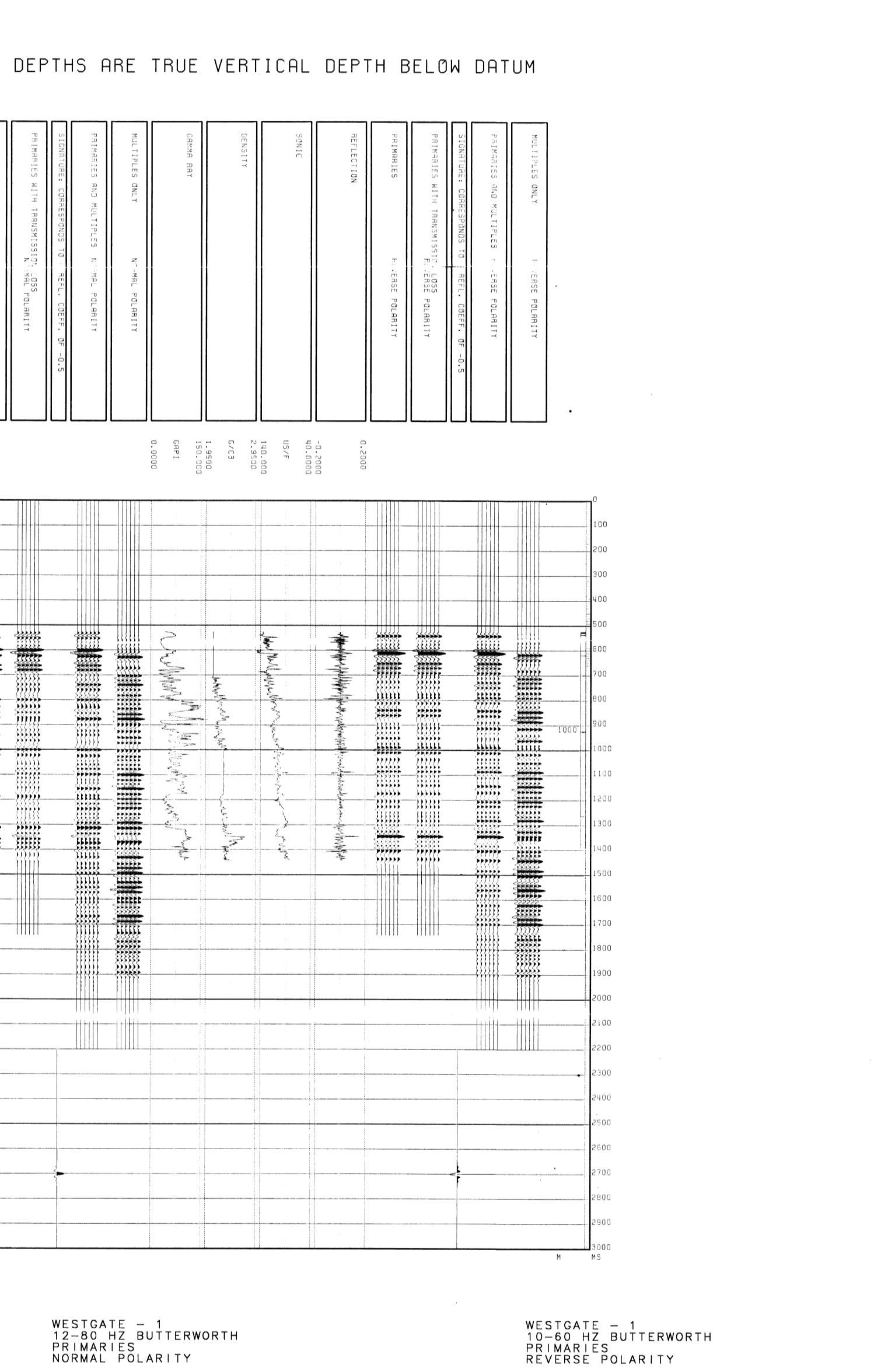
CLIENT : BEACH PETROLEUM N.L.
 FIELD : WILDCAT
 WELL : WESTGATE - 1

SYD-LOG-001 SYD-LOG-002 SYD-LOG-003 SYD-LOG-004 SYD-LOG-005 SYD-LOG-006 SYD-LOG-007 SYD-LOG-008 SYD-LOG-009 SYD-LOG-010

GEOGRAM FROM WST BUTTERWORTH FILTER WAVELET 10-60 HERTZ (48 DB/OCTAVE) NORMAL & REVERSE POLARITY

WESTGATE - 1

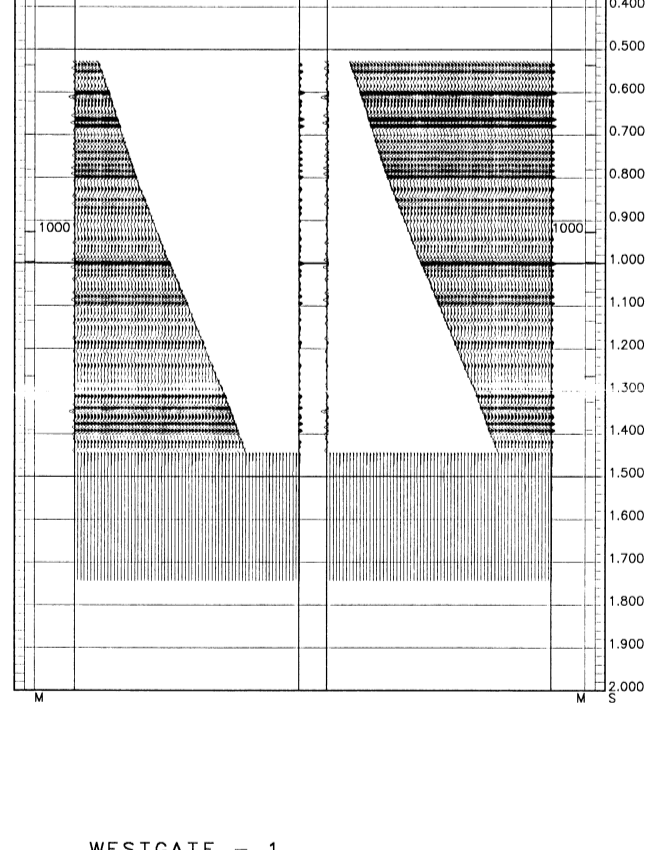
DEPTHS ARE TRUE VERTICAL DEPTH BELOW DATUM



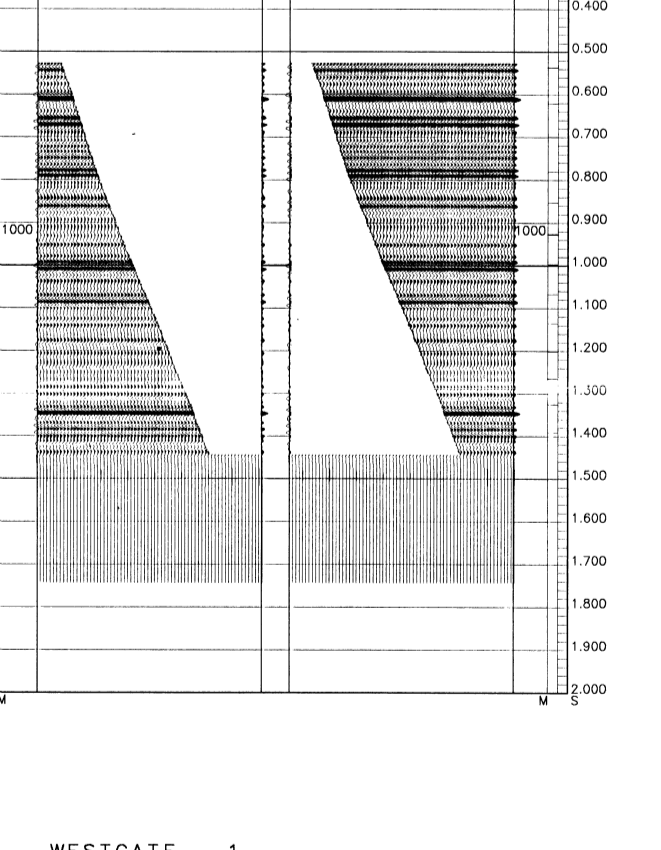
CLIENT : BEACH PETROLEUM N.L.
 FIELD : WILDCAT
 WELL : WESTGATE - 1

SYD-LOG-001 SYD-LOG-002 SYD-LOG-003 SYD-LOG-004 SYD-LOG-005 SYD-LOG-006 SYD-LOG-007 SYD-LOG-008 SYD-LOG-009 SYD-LOG-010

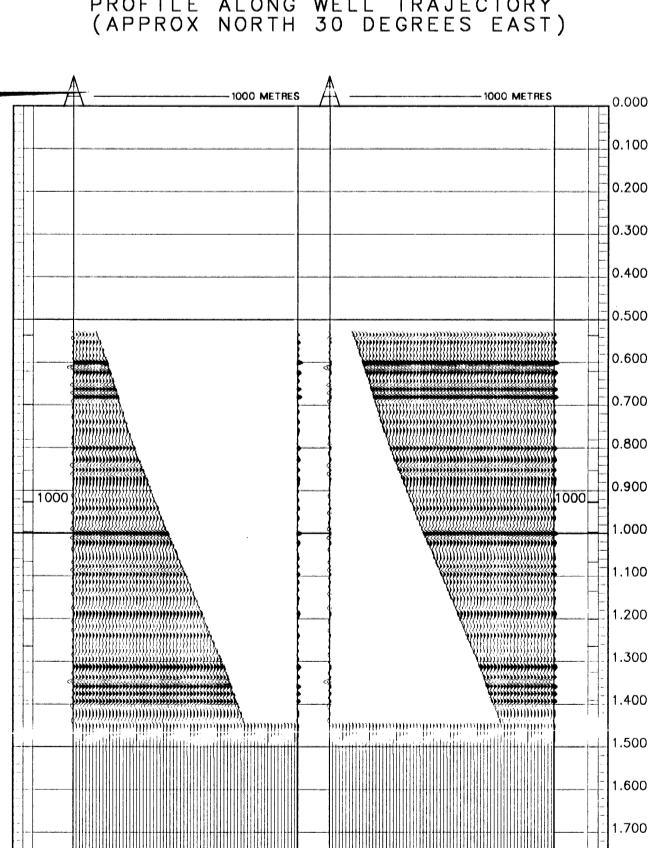
WESTGATE - 1 12-80 HZ BUTTERWORTH PRIMARIES NORMAL POLARITY (PROFILE ALONG WELL TRAJECTORY (APPROX NORTH 30 DEGREES EAST))



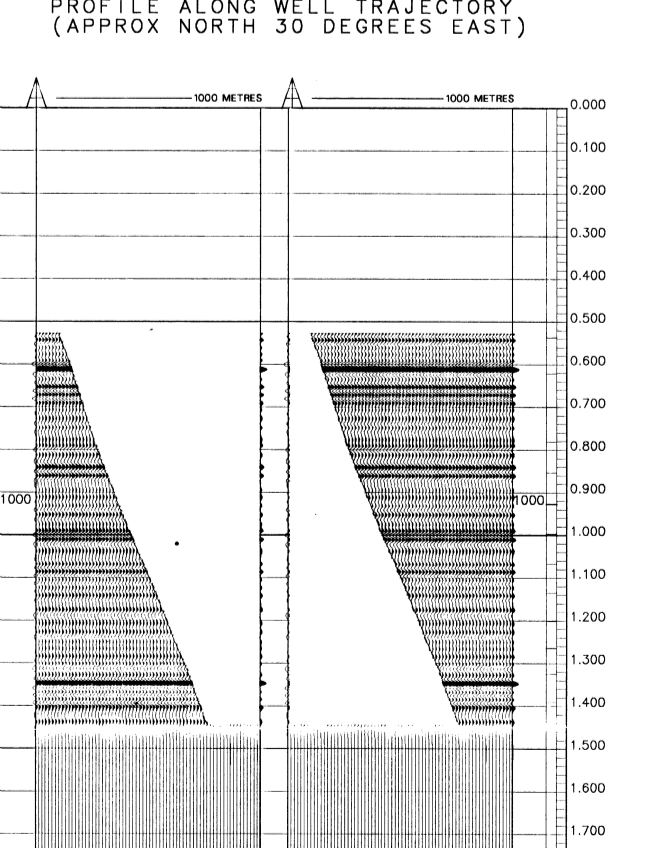
WESTGATE - 1 10-60 HZ BUTTERWORTH PRIMARIES REVERSE POLARITY (PROFILE ALONG WELL TRAJECTORY (APPROX NORTH 30 DEGREES EAST))



WESTGATE - 1 10-60 HZ BUTTERWORTH PRIMARIES NORMAL POLARITY (PROFILE ALONG WELL TRAJECTORY (APPROX NORTH 30 DEGREES EAST))



WESTGATE - 1 12-80 HZ BUTTERWORTH PRIMARIES REVERSE POLARITY (PROFILE ALONG WELL TRAJECTORY (APPROX NORTH 30 DEGREES EAST))



SYD-LOG-001 SYD-LOG-002 SYD-LOG-003 SYD-LOG-004 SYD-LOG-005 SYD-LOG-006 SYD-LOG-007 SYD-LOG-008 SYD-LOG-009 SYD-LOG-010

COMPANY: BEACH PETROLEUM NL
 FIELD: WILDCAT
 WELL: WESTGATE - 1
 COUNTRY: AUSTRALIA

