

# VELOCITY PROFILE

DEPT. NAT. RES & ENV  
PE902239

Using the following logs:  
CALI, RHOB, DT & GR

**PETROLEUM DIVISION**

**Company:** BEACH PETROLEUM NL. 03 FEB 1987

**Well:** WESTGATE - 1

**Field:** WILDCAT

**Country:** AUSTRALIA

**Reference No:** 560311 **Interval:** 00.00 to 1912.00

**Date Logged:** 14/03/86 **Date Processed:** 30/05/86

**Location:** 038 28' 01.02" S 142 53' 12.34" E

**Elevations:** KB: 94.3 M DF: 94.2 M GL: 88.1 M

**Permanent Datum:** MSL **Depth Units:** METRES

FOLD HERE

The well name, location and borehole reference data were furnished by the customer.

All interpretations are opinions based on inferences from electrical or other measurements and we cannot, and do not guarantee the accuracy or correctness of any interpretations, and we shall not, except in the case of gross or willful negligence on our part, be liable or responsible for any loss, costs, damages or expenses incurred or sustained by anyone resulting from any interpretations made by any of our officers, agents or employees. These interpretations are also subject to Clause 4 of our General Terms and Conditions as set out in our current Price Schedule.

FIELD RECORDING: Engineer: O. BOUBE Location: VEA Program Version: VSP/GEO

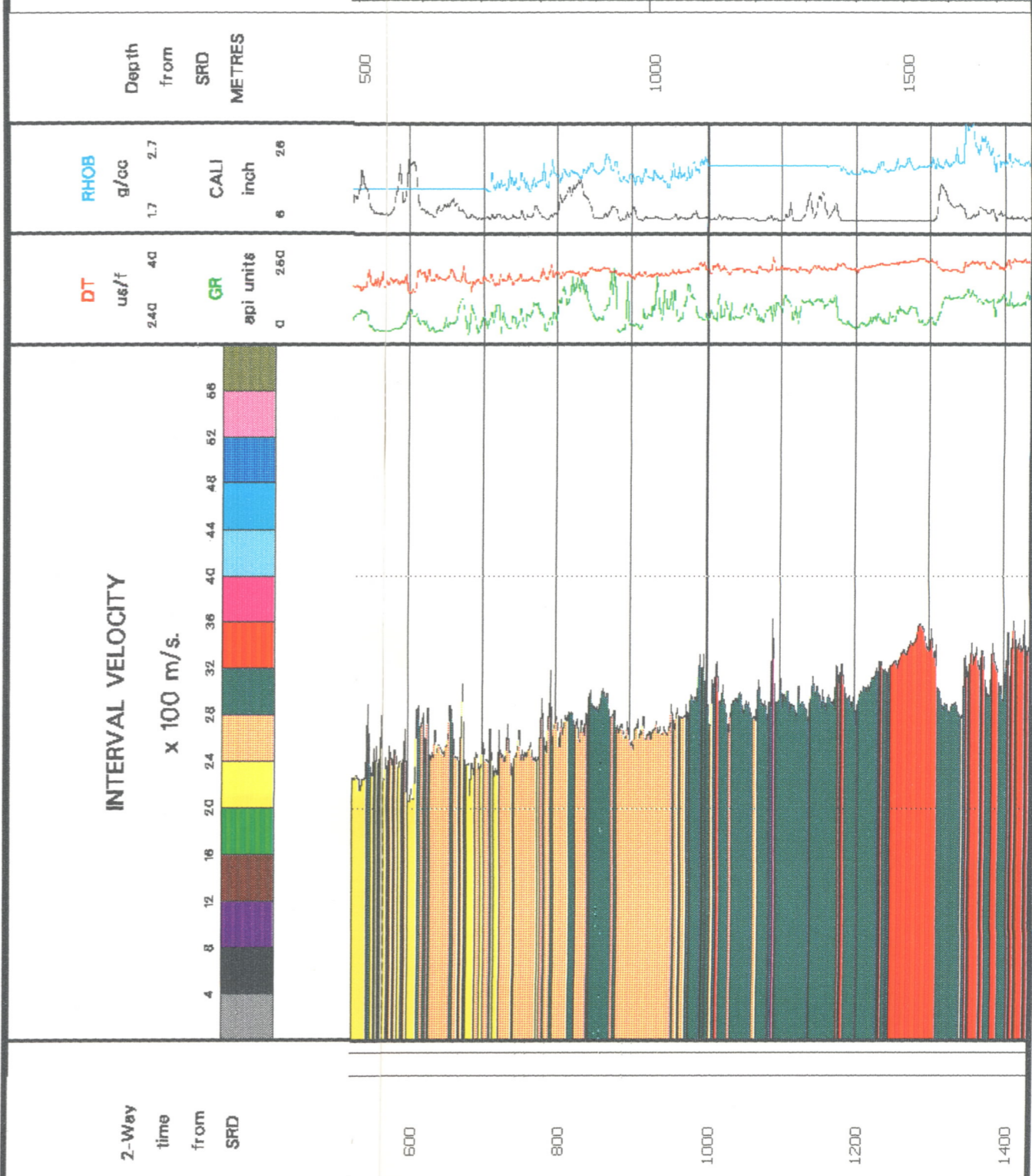
COMPUTATION: Analyst: M. SANDERS Centre: SYJ Baseline: 14.2

MUD MEASUREMENTS:

R<sub>m</sub> = 0.137 R<sub>mf</sub> = 0.128 BHT = 136 Bit Size = 8.5

Remarks:

VERTICAL TIME SCALE - 5.0 IN/SEC



VELOCITY PROFILE

