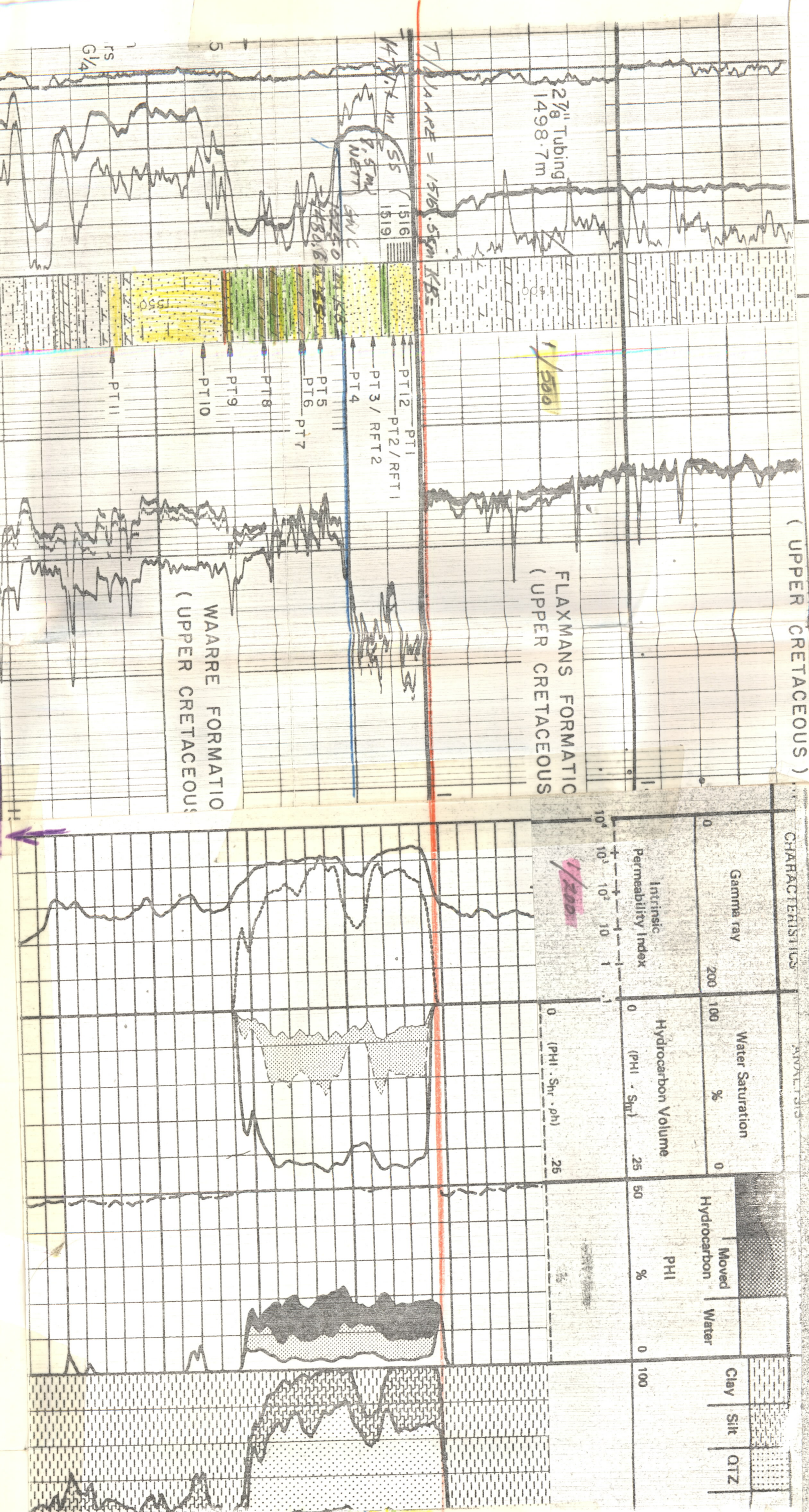


LATEROLOG DEEP
LATEROLOG SHALLOW RAY
MICRO SPHERICALLY FOCUSED LOG RAY

SARABA
An Advanced Synergetic Log System

Using the following logs:
DLL HSFL FDC CNL BSC

COMPANY: BEACH PETROLEUM N.L.
WELL: WALLABY CREEK NO 1
FIELD: WILDCAT
COUNTRY: AUSTRALIA
REFERENCE NO: 230079
DATE LOGGED: 28 MAY 1981
LOCATION: LAT: 38° 34' 47" S
LONG: 142° 26' 19" E



COMPOSITE WELL LOG
BEACH PETROLEUM N.L.
WALLABY CREEK
VICTORIA

LOCATION: LAT: 38°34'17" S (approx)
LONG: 142°26'19" E (approx)
ELEVATION: KB:44.2m O.L. 4m above m.s.l. (approx)
DATE SHODDED: 16 MARCH 1981
DATE COMPLETED: 27 MARCH 1981
LOG COVERAGE: SCHLUMBERGER
D.L.L.-FDC-GR-CAL
R.F.T.-CCL-CBL-VD-GR

LEGEND:
Sandstone
Silty claystone / Clayey siltstone
Claystone
Limestone
Gypsum
Coal
Caliche
Lignite
L
Lignite
L
Lignite

Well: WALLABY CREEK NO 1
Casing Shoe
Dull Stem Test No. 1
RFT No. 2
RFT No. 1
Perforation

Gamma ray
Water Saturation
Permeability Index
Hydrocarbon Volume
PHI
Mud
SH
DTZ

COMPUTED FROM DIRECT DIGITAL WELL LOGS

WELL EVALUATION LOG

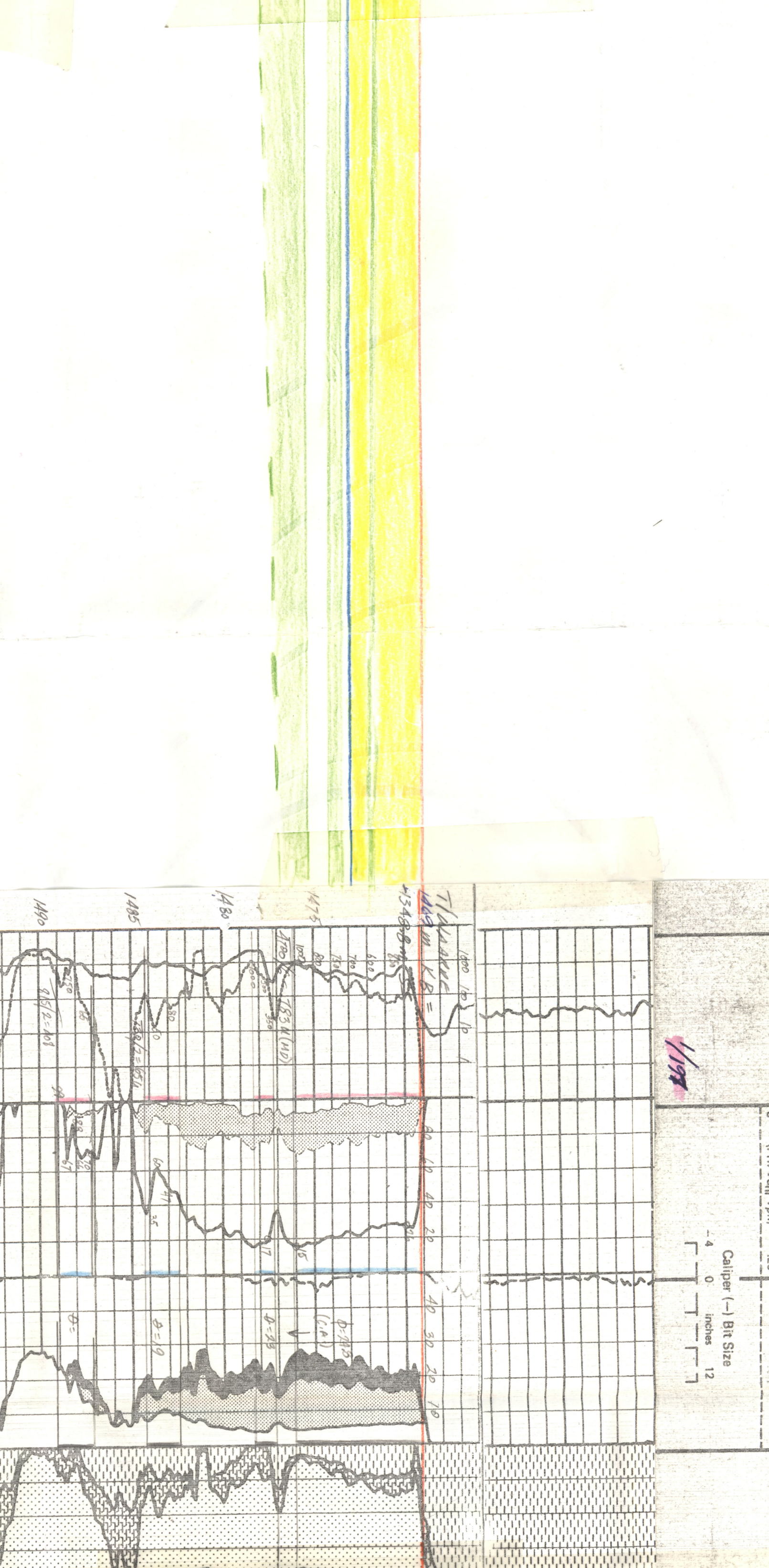
COMPANY: BEACH PETROLEUM N.L.
WELL: NORTH PARARATTE 2
FIELD: WILDCAT
COUNTRY: AUSTRALIA
DATE LOGGED: 28 MAY 1981
LOCATION: LAT: 38° 34' 47" S
LONG: 142° 26' 19" E

LOG COVERAGE: SCHLUMBERGER
D.L.L.-FDC-GR-CAL
R.F.T.-CCL-CBL-VD-GR

LEGEND:
Sandstone
Silty claystone / Clayey siltstone
Claystone
Limestone
Gypsum
Coal
Caliche
Lignite
L
Lignite
L
Lignite

Well: NORTH PARARATTE 2
Casing Shoe
Dull Stem Test No. 1
RFT No. 2
RFT No. 1
Perforation

Gamma ray
Water Saturation
Permeability Index
Hydrocarbon Volume
PHI
Mud
SH
DTZ



COMPOSITE WELL LOG
BEACH PETROLEUM N.L.
WALLABY CREEK
VICTORIA

LOCATION: LAT: 38°34'17" S (approx)
LONG: 142°26'19" E (approx)
ELEVATION: KB:44.2m O.L. 4m above m.s.l. (approx)
DATE SHODDED: 16 MARCH 1981
DATE COMPLETED: 27 MARCH 1981
LOG COVERAGE: SCHLUMBERGER
D.L.L.-FDC-GR-CAL
R.F.T.-CCL-CBL-VD-GR

LEGEND:
Sandstone
Silty claystone / Clayey siltstone
Claystone
Limestone
Gypsum
Coal
Caliche
Lignite
L
Lignite
L
Lignite

Well: NORTH PARARATTE 2
Casing Shoe
Dull Stem Test No. 1
RFT No. 2
RFT No. 1
Perforation

Gamma ray
Water Saturation
Permeability Index
Hydrocarbon Volume
PHI
Mud
SH
DTZ

COMPUTED FROM DIRECT DIGITAL WELL LOGS

WELL EVALUATION LOG

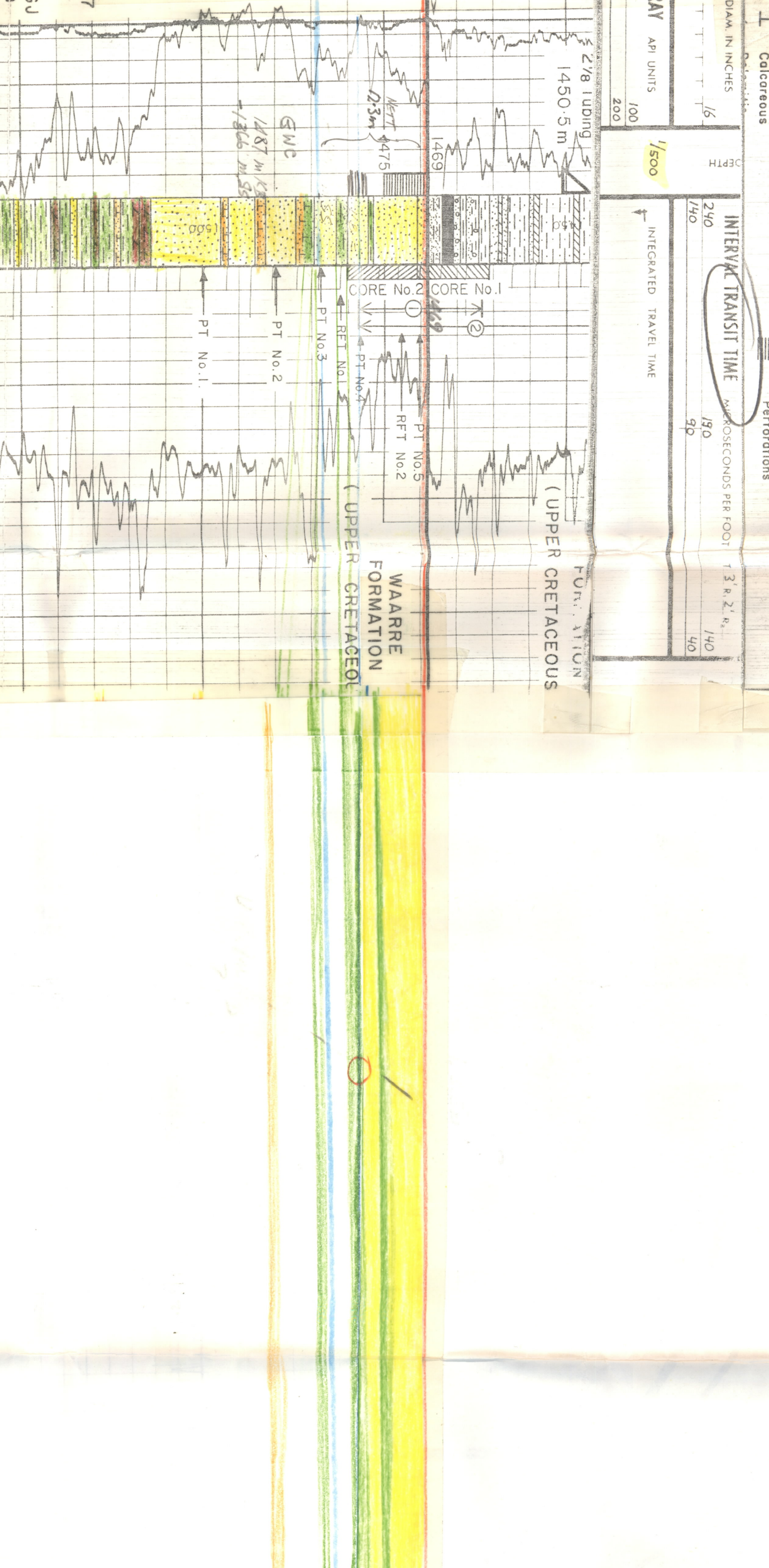
COMPANY: BEACH PETROLEUM N.L.
WELL: NORTH PARARATTE 1
FIELD: WILDCAT
COUNTRY: AUSTRALIA
DATE LOGGED: 31 OCTOBER 1979
LOCATION: LAT: 38° 34' 47" S
LONG: 142° 26' 19" E

LOG COVERAGE: SCHLUMBERGER
D.L.L.-FDC-GR-CAL
R.F.T.-CCL-CBL-VD-GR

LEGEND:
Sandstone
Silty claystone / Clayey siltstone
Claystone
Limestone
Gypsum
Coal
Caliche
Lignite
L
Lignite
L
Lignite

Well: NORTH PARARATTE 1
Casing Shoe
Dull Stem Test No. 1
RFT No. 2
RFT No. 1
Perforation

Gamma ray
Water Saturation
Permeability Index
Hydrocarbon Volume
PHI
Mud
SH
DTZ



COMPOSITE WELL LOG
BEACH PETROLEUM N.L.
WALLABY CREEK
VICTORIA

LOCATION: LAT: 38°34'17" S (approx)
LONG: 142°26'19" E (approx)
ELEVATION: KB:44.2m O.L. 4m above m.s.l. (approx)
DATE SHODDED: 16 MARCH 1981
DATE COMPLETED: 27 MARCH 1981
LOG COVERAGE: SCHLUMBERGER
D.L.L.-FDC-GR-CAL
R.F.T.-CCL-CBL-VD-GR

LEGEND:
Sandstone
Silty claystone / Clayey siltstone
Claystone
Limestone
Gypsum
Coal
Caliche
Lignite
L
Lignite
L
Lignite

Well: NORTH PARARATTE 1
Casing Shoe
Dull Stem Test No. 1
RFT No. 2
RFT No. 1
Perforation

Gamma ray
Water Saturation
Permeability Index
Hydrocarbon Volume
PHI
Mud
SH
DTZ

COMPUTED FROM DIRECT DIGITAL WELL LOGS

WELL EVALUATION LOG

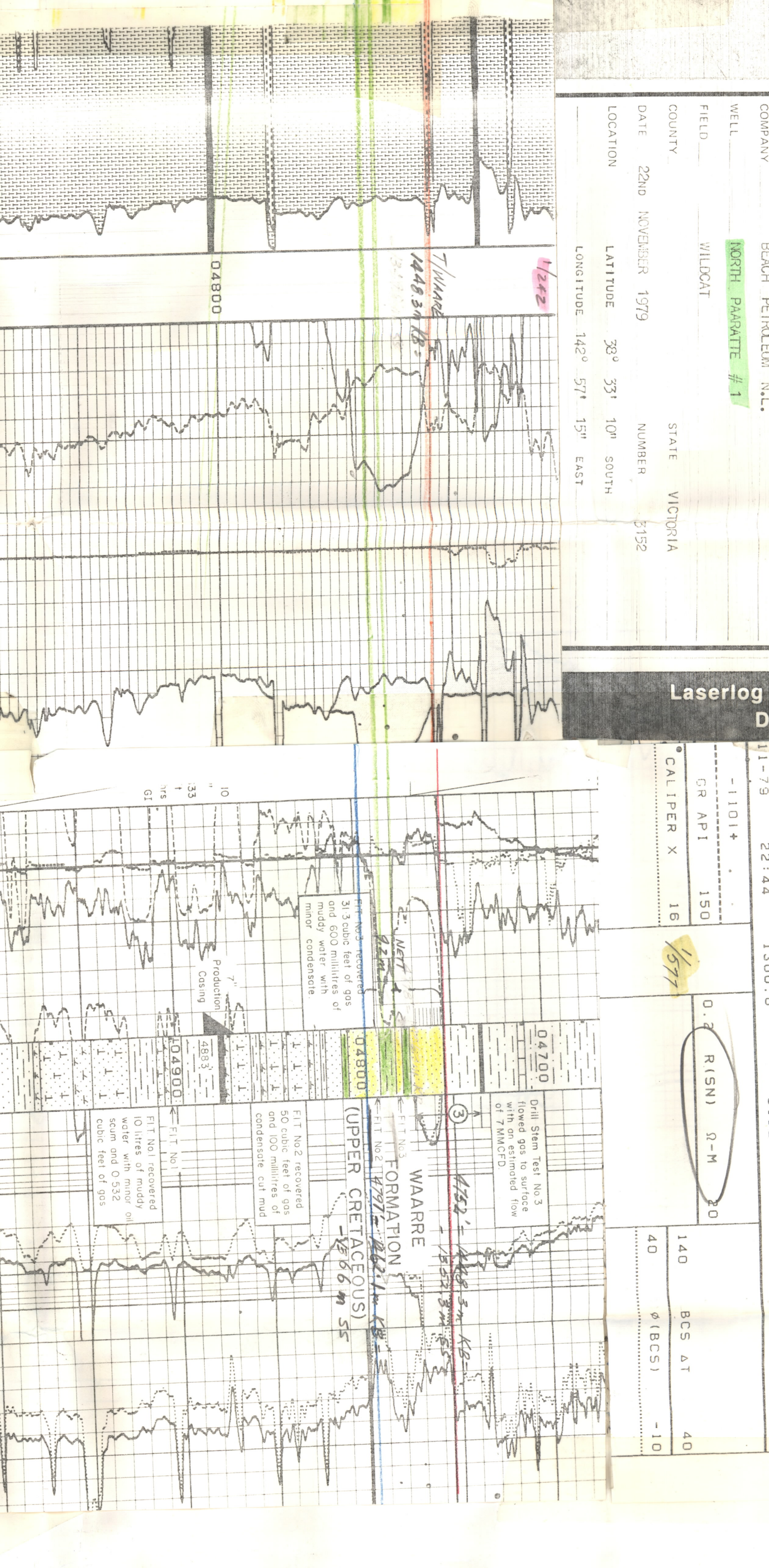
COMPANY: BEACH PETROLEUM N.L.
WELL: NORTH PARARATTE 1
FIELD: WILDCAT
COUNTRY: AUSTRALIA
DATE LOGGED: 31 OCTOBER 1979
LOCATION: LAT: 38° 34' 47" S
LONG: 142° 26' 19" E

LOG COVERAGE: SCHLUMBERGER
D.L.L.-FDC-GR-CAL
R.F.T.-CCL-CBL-VD-GR

LEGEND:
Sandstone
Silty claystone / Clayey siltstone
Claystone
Limestone
Gypsum
Coal
Caliche
Lignite
L
Lignite
L
Lignite

Well: NORTH PARARATTE 1
Casing Shoe
Dull Stem Test No. 1
RFT No. 2
RFT No. 1
Perforation

Gamma ray
Water Saturation
Permeability Index
Hydrocarbon Volume
PHI
Mud
SH
DTZ



COMPOSITE WELL LOG
BEACH PETROLEUM N.L.
WALLABY CREEK
VICTORIA

LOCATION: LAT: 38°34'17" S (approx)
LONG: 142°26'19" E (approx)
ELEVATION: KB:44.2m O.L. 4m above m.s.l. (approx)
DATE SHODDED: 16 MARCH 1981
DATE COMPLETED: 27 MARCH 1981
LOG COVERAGE: SCHLUMBERGER
D.L.L.-FDC-GR-CAL
R.F.T.-CCL-CBL-VD-GR

LEGEND:
Sandstone
Silty claystone / Clayey siltstone
Claystone
Limestone
Gypsum
Coal
Caliche
Lignite
L
Lignite
L
Lignite

Well: NORTH PARARATTE 1
Casing Shoe
Dull Stem Test No. 1
RFT No. 2
RFT No. 1
Perforation

Gamma ray
Water Saturation
Permeability Index
Hydrocarbon Volume
PHI
Mud
SH
DTZ