

COMPANY: BEACH PETROLEUM N.L. *From WCR Vc 2*

WELL: SQUATTER # 1

FIELD: WILDCAT
RIG: D.D.E. # 19
STATE: VICTORIA
NATION: AUSTRALIA
LOCATION: OTHAY BASIN

LATITUDE: 37° 52' 26.00"S
LONGITUDE: 141° 08' 09.00"E

PERMANENT DATUM: MSL
ELEV. OF PERM. DATUM: KB: 61.7 M
LDG MEASURED FROM: KB
61.7 M ABOVE PERM. DATUM
DRLG. MEASURED FROM: KB

GL: 61.4 M
GL: 57.1 M

OTHER SERVICES-
DLL-HSL-GR
LDL-CNL-GR
BHC-GR
CST

PROGRAM
TAPE NO: 28.4
SERVICE
ORDER NO:

DATE: 7 AUG 87
RUN NO: 1

DEPTH-DRILLER: 1500.0 M
DEPTH-LOGGER: 1492.0 M
BTM. LOG INTERVAL: 1492.0 M
TOP LOG INTERVAL: 62.0 M

CASING-DRILLER: 13.0 M 323.6 M
CASING-LOGGER: 16 9 5/8 323.6 M

WEIGHT: 55.0000 LB/F 36.0000 LB/F
BIT SIZE: 17 1/2 12 1/4 8 1/2
DEPTH: 14.0 M 327.0 M 1500.0 M

TYPE FLUID IN HOLE: KCL POLYMER
DENSITY: 9.40 LB/G
VISCOSITY: 41.0 S
PH: 9.5
FLUID LOSS: 7.8 C3
SOURCE OF SAMPLE: FLOWLINE

RH: .232 DHMM AT 11.5 DEGC
RMF: .189 DHMM AT 5.00 DEGC
RMC: .315 DHMM AT 7.00 DEGC

SOURCE RMF/RMC: PRESS /PRESS
RH AT BHT: .050 DHMM AT 132. DEGC
RMF AT BHT: .033 DHMM AT 132. DEGC
RMC AT BHT: .059 DHMM AT 132. DEGC

TIME CIRC. STOPPED: 03:30 (06)
TIME LOGGER ON BTH.: 01:15 (07)

MAX. REC. TEMP: 132.0 DEGC

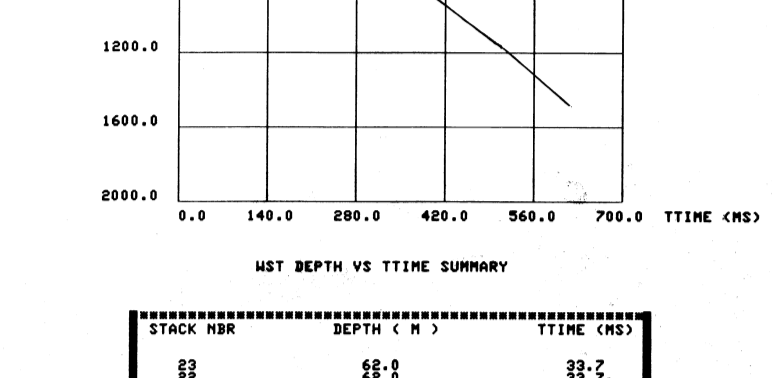
LOGGING UNIT NO: 822
LOGGING UNIT LOC: VEA
RECORDED BY: J. PATEL
WITNESSED BY: J. BOHLER, A. BUFFIN

REMARKS:
EXPLOSIVE CHARGE OFFSET H.R.T. WELL HEAD = 31 M.
HYDROPHONE OFFSET H.R.T. WELL HEAD = 31 M.
EXPLOSIVE CHARGE DEPTH = 1.5 M BELOW G.L.
HYDROPHONE DEPTH = 1 M BELOW G.L.
EXPLOSIVE CHARGE AZIMUTH = 180 DEG H.R.T. WELL HEAD.

EQUIPMENT NUMBERS-
WSC B 735 WSA AB 947 HPS AB 944 CAC B 950
WSI A 766 WSM A 991 WDM AB 446

ALL INTERPRETATIONS ARE OPINIONS BASED ON INFERENCES FROM ELECTRICAL OR OTHER MEASUREMENTS AND WE CANNOT, AND DO NOT GUARANTEE THE ACCURACY OR CORRECTNESS OF ANY INTERPRETATIONS, AND WE SHALL NOT, EXCEPT IN THE CASE OF GROSS OR WILLFUL NEGLIGENCE ON OUR PART, BE LIABLE OR RESPONSIBLE FOR ANY LOSS, COSTS, DAMAGES OR EXPENSES INCURRED OR SUSTAINED BY ANYONE RESULTING FROM ANY INTERPRETATION MADE BY ANY OF OUR OFFICERS, AGENTS OR EMPLOYEES. THESE INTERPRETATIONS ARE ALSO SUBJECT TO OUR GENERAL TERMS AND CONDITIONS AS SET OUT IN OUR CURRENT PRICE SCHEDULE.

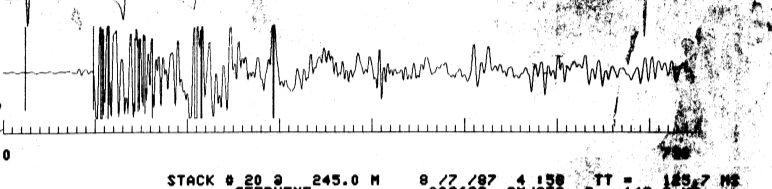
CP 28.4 FILE 3 07-AUG-87 05:55
DATA ACQUIRED



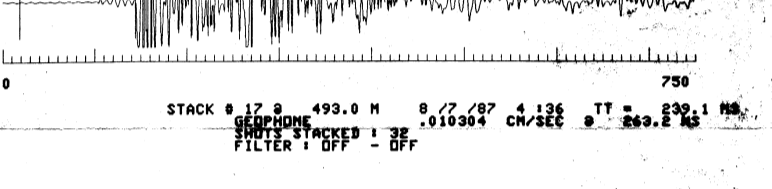
HST DEPTH VS TTIME SUMMARY

STACK NBR	DEPTH (M)	TIME (MS)
23	62.0	33.7
21	150.0	37.7
20	245.0	41.7
17	493.0	49.1
16	565.0	51.4
14	720.0	54.1
13	795.0	56.9
11	825.0	57.9
10	898.0	59.5
9	1025.0	62.5
8	1161.0	64.9
7	1225.0	66.6
6	1298.0	68.2
5	1367.0	69.7
4	1395.0	70.7
3	1413.0	71.7
2	1492.0	621.5

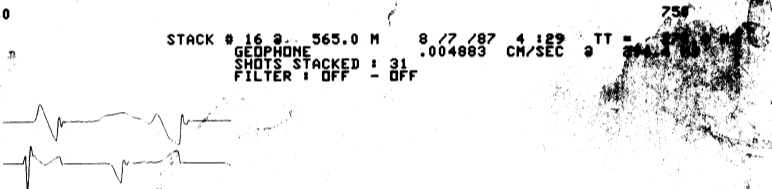
STACK # 23 @ 62.0 M 8 / 7 / 87 5.133 TT = 33.7 MS
GEOPHONE .010127 CM/SEC @ 54.1 MS
SHOTS STACKED : 38
FILTER : OFF - OFF



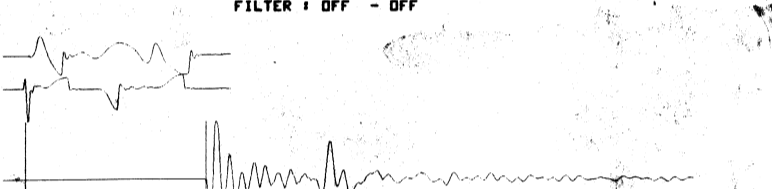
STACK # 21 @ 150.0 M 8 / 7 / 87 5.112 TT = 37.7 MS
GEOPHONE .010302 CM/SEC @ 57.2 MS
SHOTS STACKED : 37
FILTER : OFF - OFF



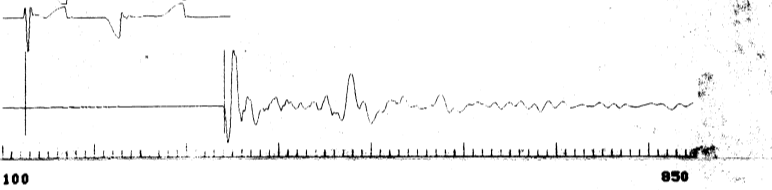
STACK # 20 @ 245.0 M 8 / 7 / 87 4.158 TT = 41.7 MS
GEOPHONE .009692 CM/SEC @ 143.8 MS
SHOTS STACKED : 35
FILTER : OFF - OFF



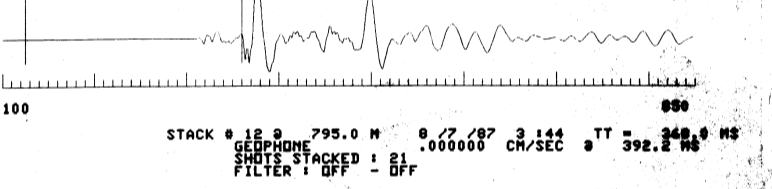
STACK # 17 @ 493.0 M 8 / 7 / 87 4.136 TT = 49.1 MS
GEOPHONE .010304 CM/SEC @ 269.8 MS
SHOTS STACKED : 32
FILTER : OFF - OFF



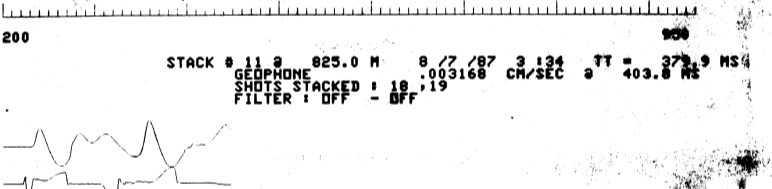
STACK # 16 @ 565.0 M 8 / 7 / 87 4.129 TT = 51.4 MS
GEOPHONE .004883 CM/SEC @ 284.7 MS
SHOTS STACKED : 31
FILTER : OFF - OFF



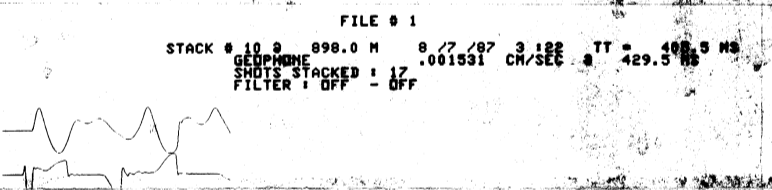
STACK # 14 @ 720.0 M 8 / 7 / 87 4.121 TT = 54.1 MS
GEOPHONE .007104 CM/SEC @ 320.3 MS
SHOTS STACKED : 29
FILTER : OFF - OFF



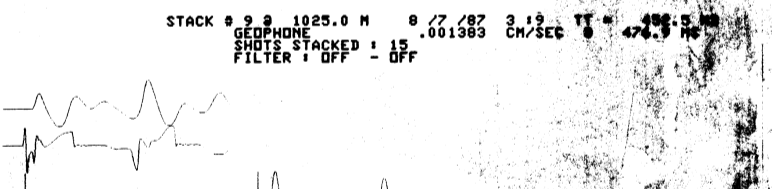
STACK # 13 @ 795.0 M 8 / 7 / 87 4.113 TT = 56.9 MS
GEOPHONE .005839 CM/SEC @ 340.1 MS
SHOTS STACKED : 25
FILTER : OFF - OFF



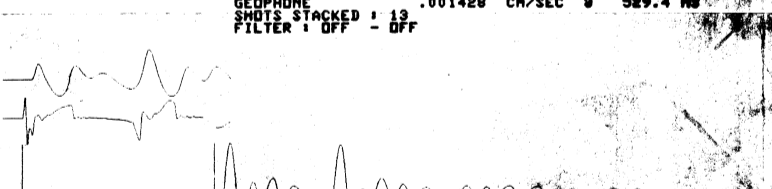
STACK # 11 @ 825.0 M 8 / 7 / 87 3.124 TT = 57.9 MS
GEOPHONE .003168 CM/SEC @ 403.8 MS
SHOTS STACKED : 19
FILTER : OFF - OFF



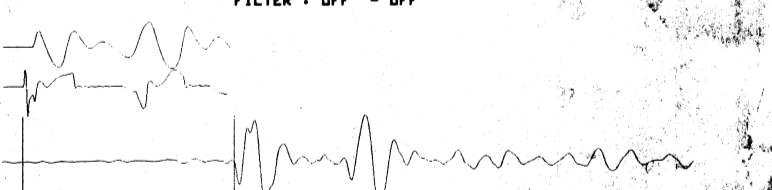
STACK # 10 @ 898.0 M 8 / 7 / 87 3.122 TT = 59.5 MS
GEOPHONE .001531 CM/SEC @ 429.5 MS
SHOTS STACKED : 17
FILTER : OFF - OFF



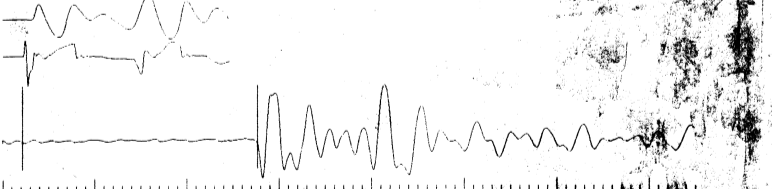
STACK # 9 @ 1025.0 M 8 / 7 / 87 3.119 TT = 62.5 MS
GEOPHONE .001383 CM/SEC @ 476.9 MS
SHOTS STACKED : 15
FILTER : OFF - OFF



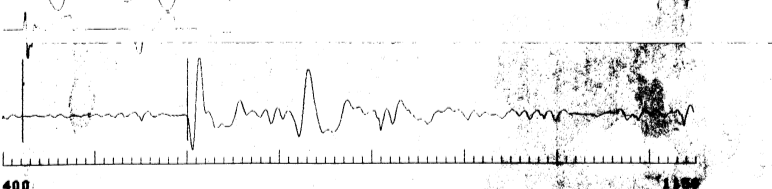
STACK # 8 @ 1161.0 M 8 / 7 / 87 2.157 TT = 64.9 MS
GEOPHONE .000855 CM/SEC @ 529.4 MS
SHOTS STACKED : 13
FILTER : OFF - OFF



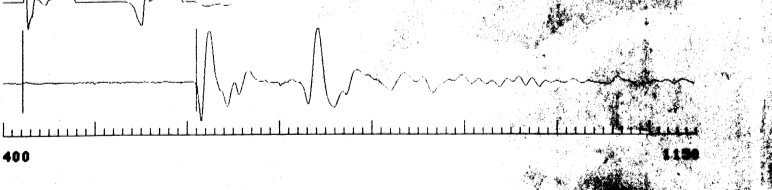
STACK # 7 @ 1225.0 M 8 / 7 / 87 2.152 TT = 66.6 MS
GEOPHONE .000607 CM/SEC @ 559.6 MS
SHOTS STACKED : 12
FILTER : OFF - OFF



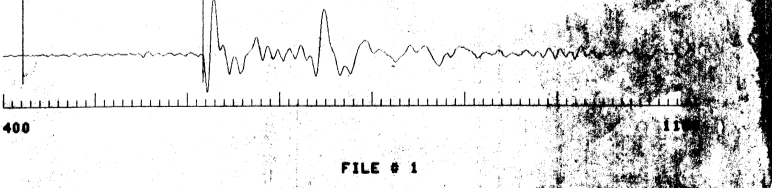
STACK # 6 @ 1298.0 M 8 / 7 / 87 2.146 TT = 68.2 MS
GEOPHONE .000692 CM/SEC @ 579.7 MS
SHOTS STACKED : 11
FILTER : OFF - OFF



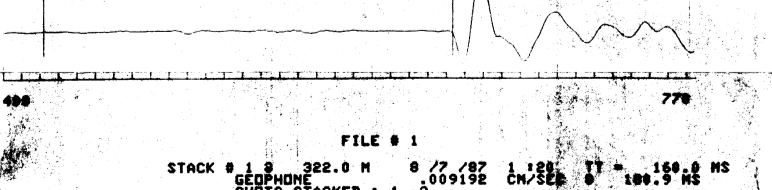
STACK # 5 @ 1367.0 M 8 / 7 / 87 2.137 TT = 69.7 MS
GEOPHONE .000855 CM/SEC @ 599.3 MS
SHOTS STACKED : 9
FILTER : OFF - OFF



STACK # 4 @ 1395.0 M 8 / 7 / 87 2.130 TT = 69.7 MS
GEOPHONE .000692 CM/SEC @ 609.3 MS
SHOTS STACKED : 8
FILTER : OFF - OFF



STACK # 3 @ 1413.0 M 8 / 7 / 87 2.117 TT = 71.7 MS
GEOPHONE .000692 CM/SEC @ 621.5 MS
SHOTS STACKED : 6
FILTER : OFF - OFF



STACK # 2 @ 1492.0 M 8 / 7 / 87 1.120 TT = 160.0 MS
GEOPHONE .000613 CM/SEC @ 642.6 MS
SHOTS STACKED : 1
FILTER : OFF - OFF

