

SKULL CREEK WEST No.1

CORE No. 1 & 2

1291.50

1292.50

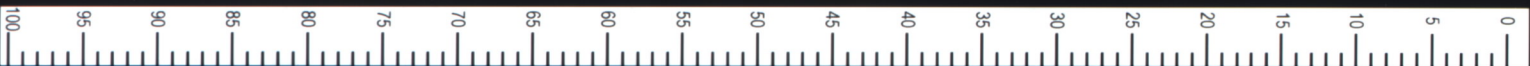
1293.50

1294.50

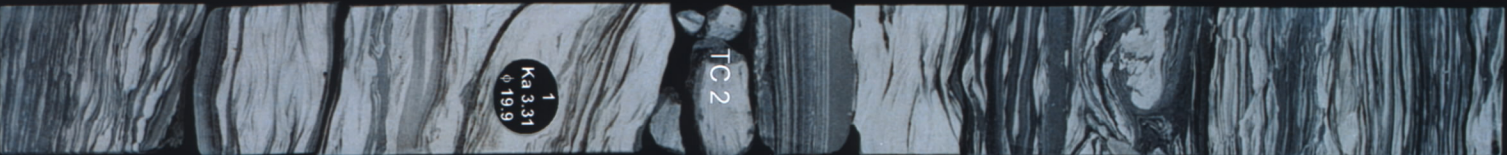
DEPT. NAT. RES & ENV



PE907584



1290.70



1
Ka 3.31
φ 19.9

TC 2



2
Ka 3.36
φ 17.4



3
Ka 5.9
φ 17.0

3V
Ka 0.13
φ 9.4



GREY SCALE



COLOUR REFERENCE

