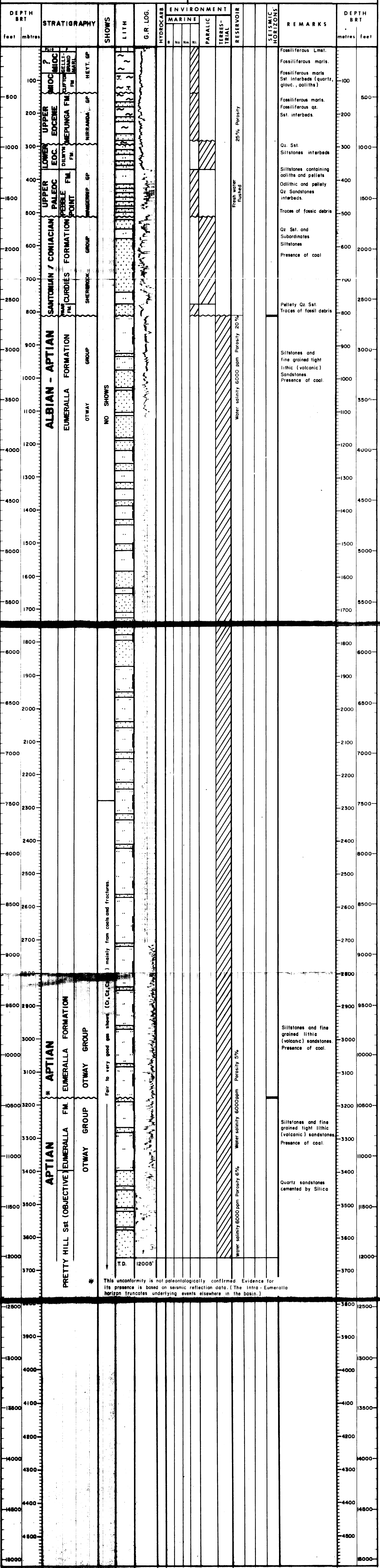


LAT: 38° 31' 57" LONG: 143° 08' 34"
LINE NO: 71-43 SP. 300' E. of 281 PERMIT: PEP 6
ELEV. RT: + 528 ft. SPUDDED: 18-2-74
WATER DEPTH: - ft. COMPLETED: 9-5-74
TOTAL DEPTH: 12,005 ft. STATUS: PBA

SHELL DEVELOPMENT (AUST) PTY. LTD.

OTWAY BASIN W680 ROSS CREEK - I STRATIGRAPHIC SUMMARY LOG Scale 1:5000



mainly from coals and fractures.

Fair to very good gas shows (C₁, C₂, C₃)

T.D. 12005'

* This unconformity is not paleontologically confirmed. Evidence for its presence is based on seismic reflection data. (The Intra-Eumeralla horizon truncates underlying events elsewhere in the basin.)

25% Porosity

Fresh water flushed

Water salinity 6000 ppm Porosity 20%

Water salinity 6000 ppm Porosity 5%

Water salinity 6000 ppm Porosity 6%

Water salinity 6000 ppm Porosity 6%

HEYT. GP

NIRRANGA. GP

SHERRWOOD. GP

OTWAY GROUP

OTWAY GROUP

OTWAY GROUP

OTWAY GROUP

OTWAY GROUP

OTWAY GROUP