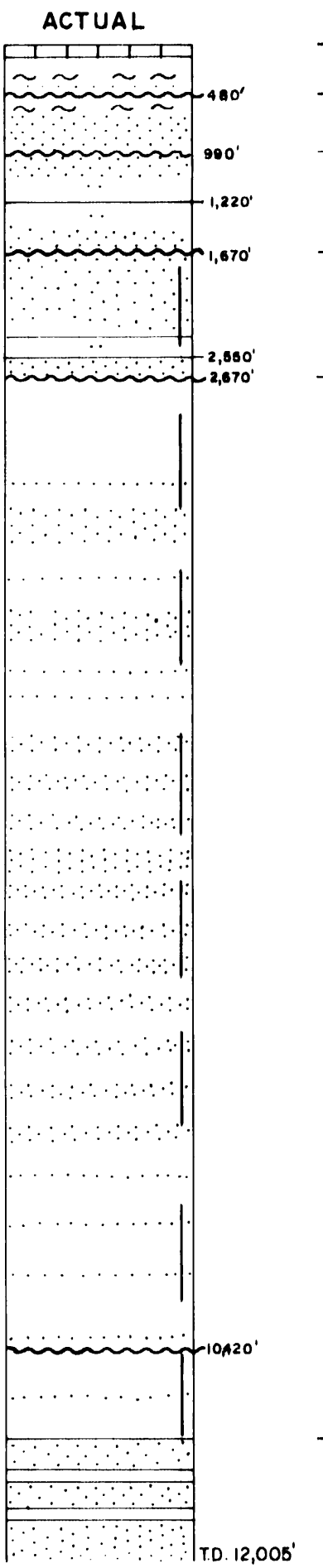
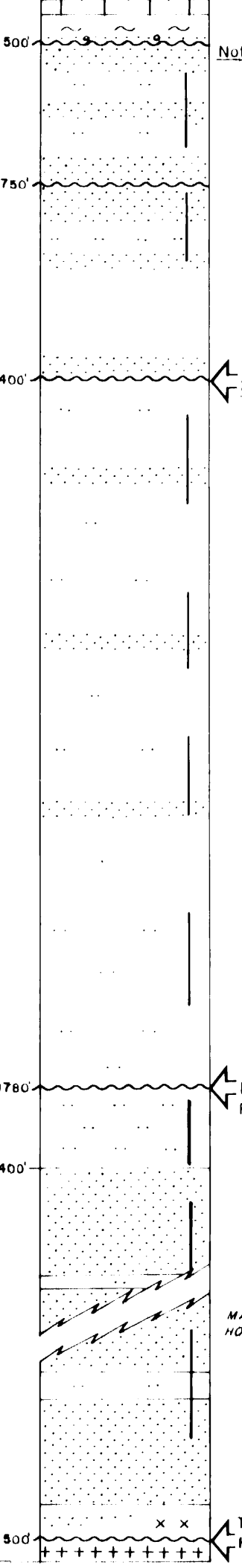


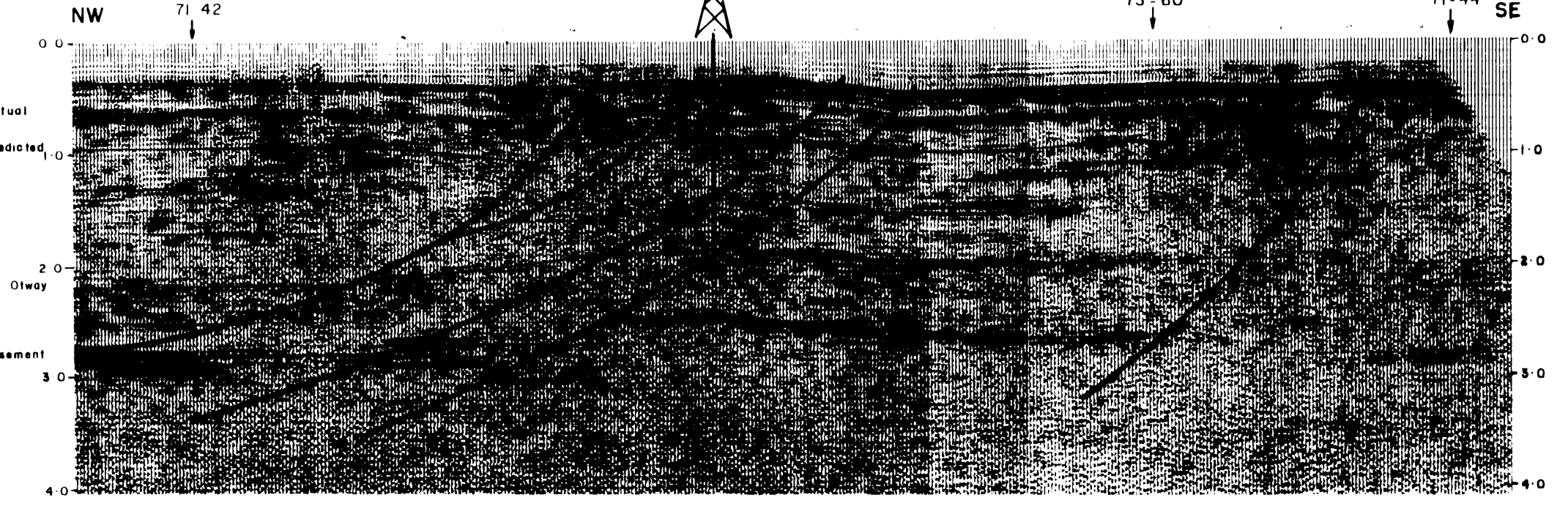
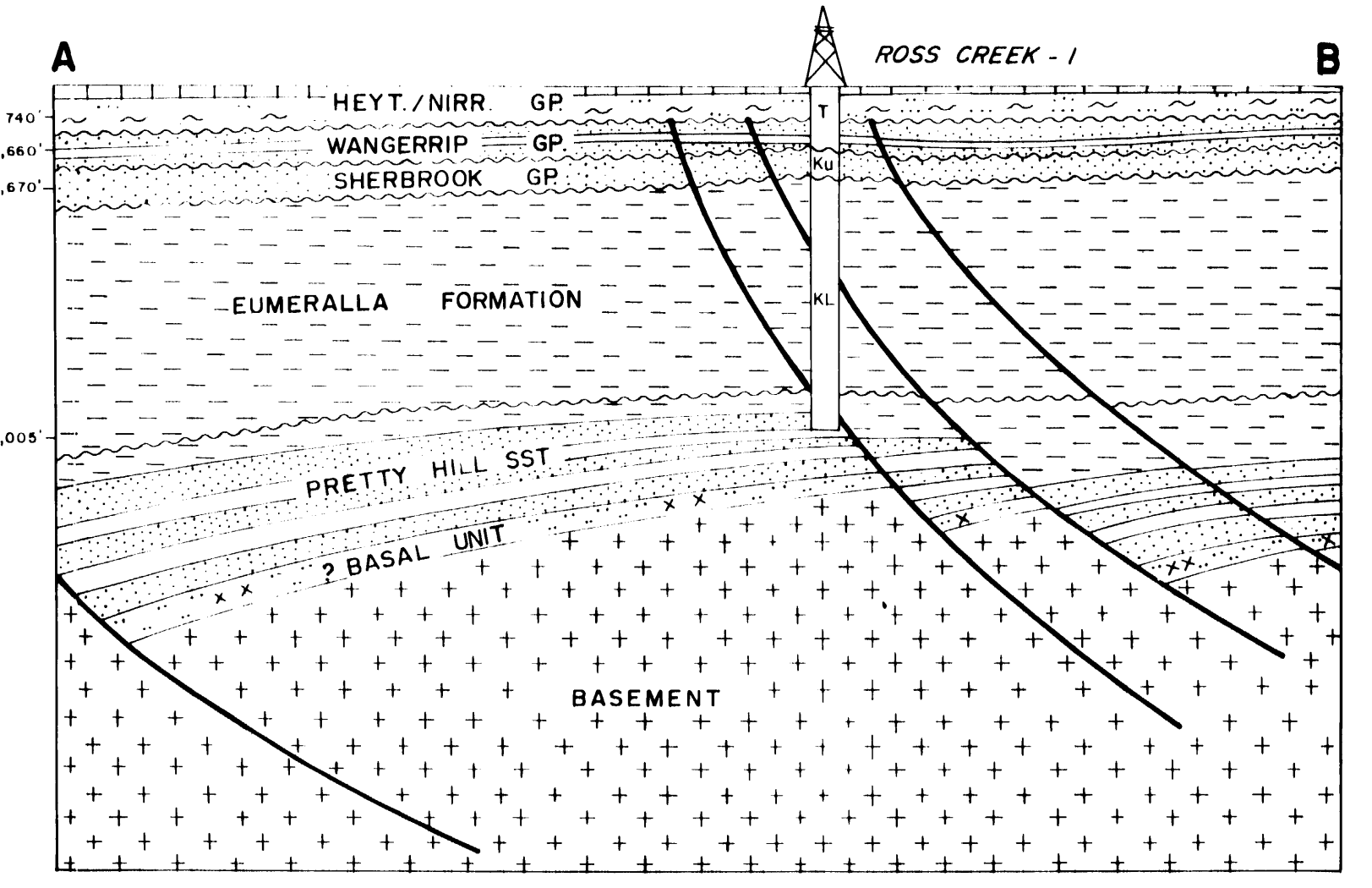
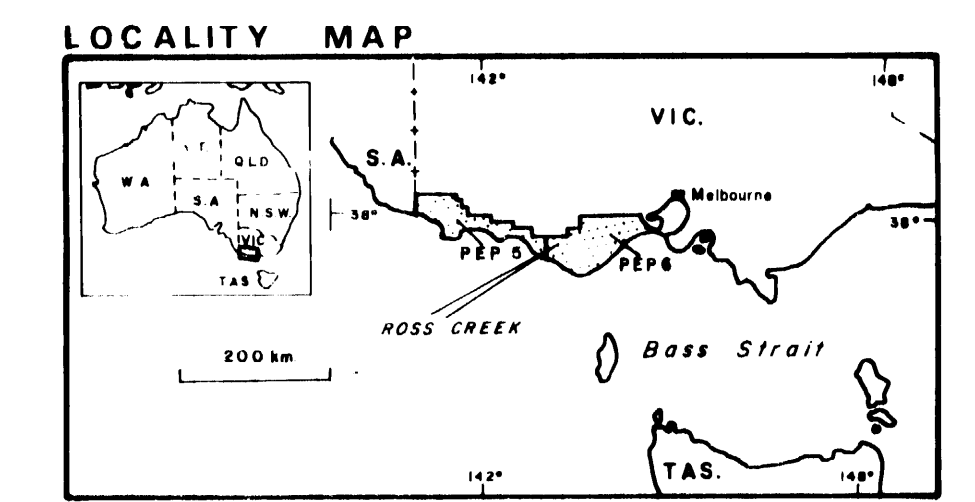
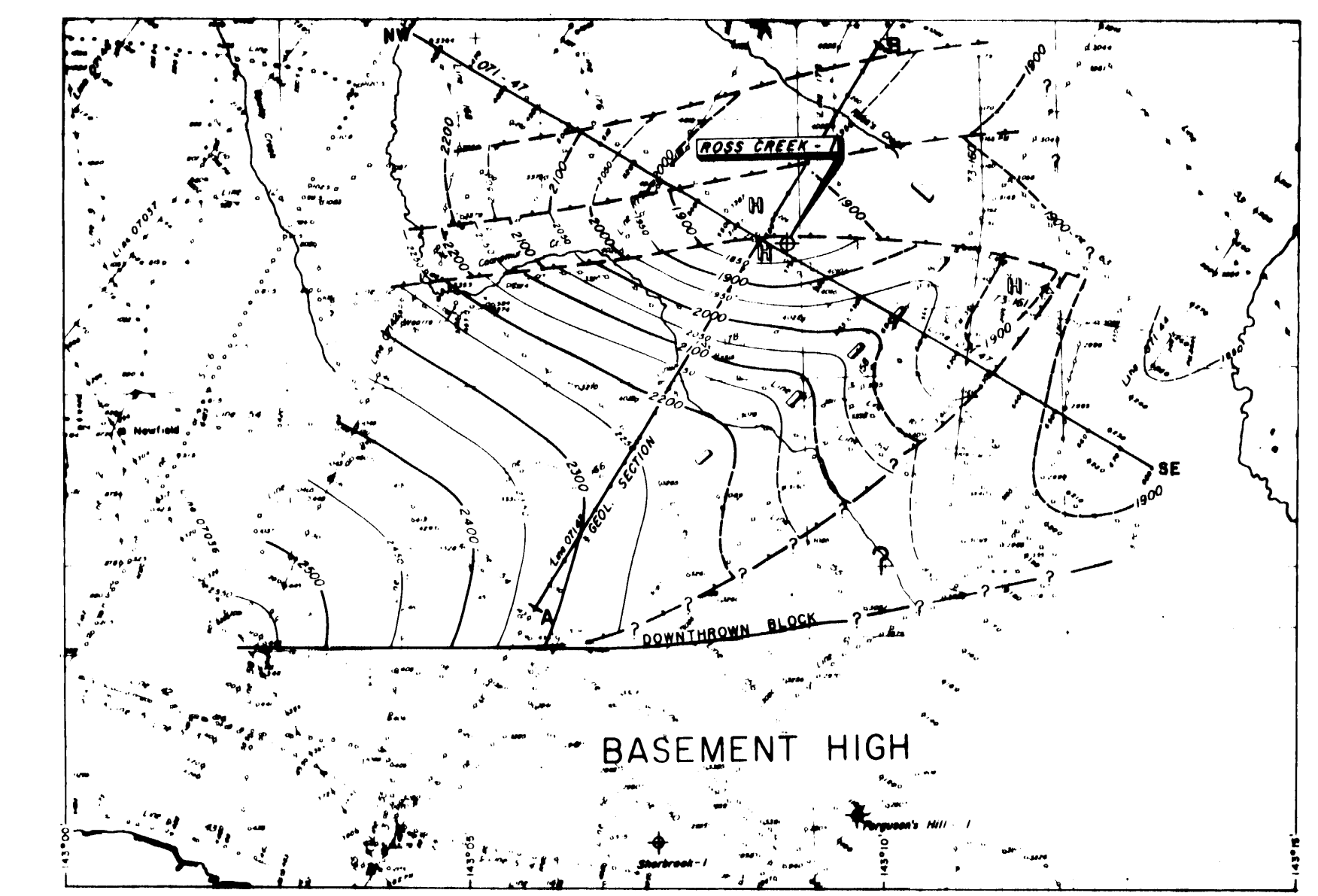
ROSS CREEK - 1



PREDICTED



Note: Scale 1 cm = 500'
All depths below D.F. (±528')



DEPT. NAT. RES & ENV
PE907128

SHELL DEVELOPMENT (AUSTRALIA) PTY. LTD.

OTWAY BASIN W.C.D.

PEP 6

ROSS CREEK-1 SUMMARY SHEET

Author: South Aust. Team Date: July, 1974

Report No: SDA 184 Drawing No: 7820 Encl. 8