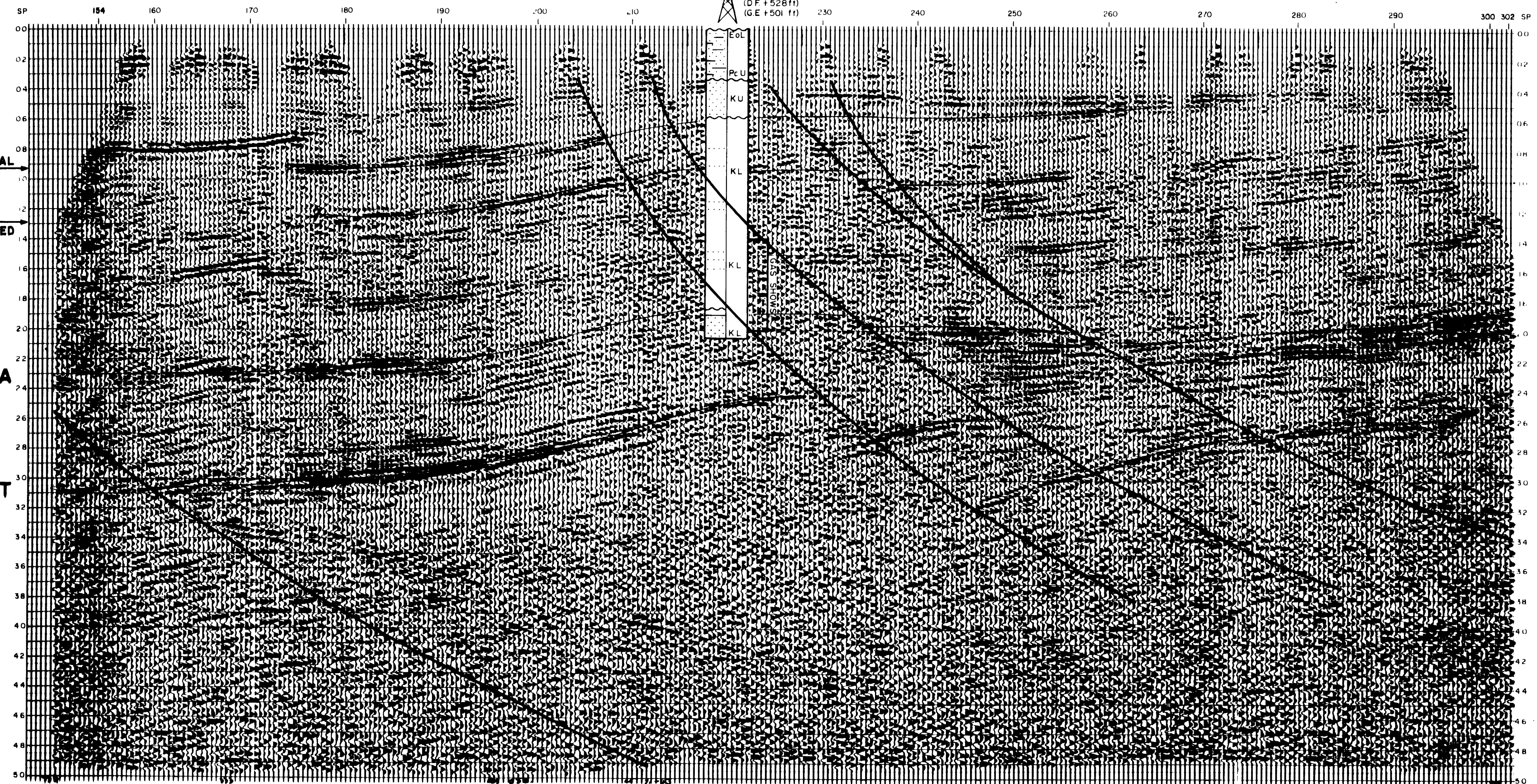
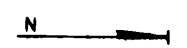


DP	264
V	T
6100	0
6100	350
7500	825
8900	1600
13500	3000
18000	5000

51-47
Ross Creek -1

DP	150	DP	120
V	T	V	T
6200	0	6100	0
7500	350	6100	350
8900	825	7500	825
13500	1600	9500	1600
18000	3000	13500	3000
		18000	5000

(D.F. +528 ft)
(G.E. +501 ft)



FINAL STACK

LINE 71-43
SP'S 154 - 302
AREA WARRNAMBOOL - POMORNEIT
LOCATION VICTORIA, AUSTRALIA
DATE MARCH 1971 DATUM SEA LEVEL

SHELL DEVELOPMENT (AUSTRALIA) PTY. LTD.

FIELD RECORDING DATA

RECORDED BY: GSI PARTY 827
ENERGY SOURCE: DYNAMITE
INSTRUMENTS: 10000 OPS SAMPLE RATE: 2MS
GAIN CONTROL: ASC RECORDING FILTER: HIGH TO LOW
ENERGY PATTERN: 8 IN LINE SOFT APART

SPREAD: 24 GROUP GAP SPLIT GROUP INTERVAL: 300 FT
SHOT POINT INTERVAL: 800 FT
SHOT TYPE: 8 IN DIGITAL SEIS INTERVAL: 24 AT 10 FT
SPREAD LENGTH: 488-5418 M MULTPLICITY: 8 FOLD

DIGITAL PROCESSING SEQUENCE

SAMPLE RATE: 4MS

- RECORD SPLIT
- TRUE AMPLITUDE RECOVERY
- EDIT
- TIME VARIANT DECONVOLUTION 20PTS X 4MS 4 GATES
- TIME VARIANT SCALING 5 GATES OF 30MS EACH
- 8 FOLD COMMON DEPTH POINT GATHER
- VELOCITY ANALYSIS VELOCITY PANS
- NORMAL MOVEOUT
- DATUM STATICS
- AUTOMATIC RESIDUAL STATICS
- COMMON DEPTH POINT STACK
- TIME VARIANT FILTER

GEOPHYSICAL SERVICE INTERNATIONAL
1973 Rep.

DEPT. NAT. RES. & ENV.
PE907118

SHELL DEVELOPMENT (AUSTRALIA) PTY. LTD.

OTWAY BASIN, PEP 6
ROSS CREEK AREA

INTERPRETED SEISMIC LINE

71-43 W 270
S.P. 154 - 302 ROSS CREEK -1
Scale 1:

Author: South Aust. Team	Date: July 1974	Encl. 9
Report No: S.D.A. 184	Drawing No: 7557-1	