

Schlumberger

SYDNEY COMPUTING CENTRE



VELOCITY PROFILE

Using the following logs:
CALL, RHOB, DT & GR

Company: BEACH PETROLEUM NL. **PETROLEUM DIVISION**

Well: PRINCES - 1

Field: WILDCAT **03 FEB 1987 W.C.R ENC**
1-4

Country: AUSTRALIA

Reference No: 560406 Interval: 1140.00 to 290.00

Date Logged: 04/04/86 Date Processed: 26/05/86

Location: 038 29' 32" S 142 59' 20" E

Elevations: KB: 115.5 M DF: 115.4 M GL: 109.5 M

Permanent Datum: MSL Depth Units: METRES

FOLD HERE The well name, location and borehole reference data were furnished by the customer.

All interpretations are opinions based on inferences from electrical or other measurements and we cannot, and do not guarantee the accuracy or correctness of any interpretations, and we shall not, except in the case of gross or willful negligence on our part, be liable or responsible for any loss, costs, damages or expenses incurred or sustained by anyone resulting from any interpretations made by any of our officers, agents or employees. These interpretations are also subject to Clause 4 of our General Terms and Conditions as set out in our current Price Schedule.

FIELD RECORDING: Engineer: O. BOUBE Location: OEA Program Version: VSP/CEO
 COMPUTATION: Analyst: M. SANDERS Centre: SYJ Baseline: 14.2

MUD MEASUREMENTS:

R_m = 0.133

R_{mf} = 0.131

BHT =

110

Bit Size =

8.5

Remarks:

VERTICAL TIME SCALE - 7.5 IN/SEC

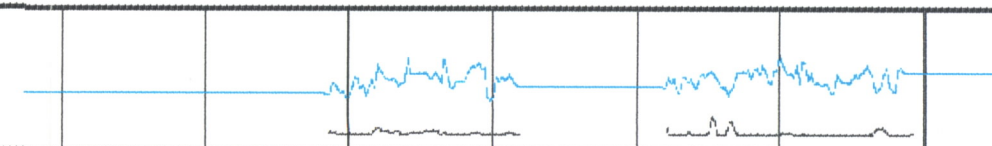
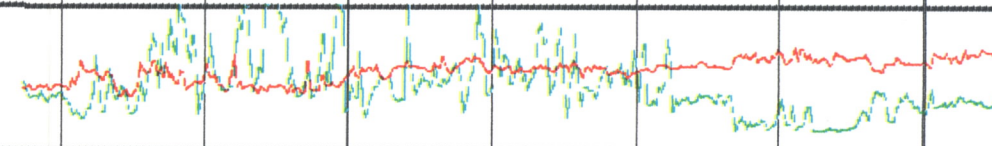
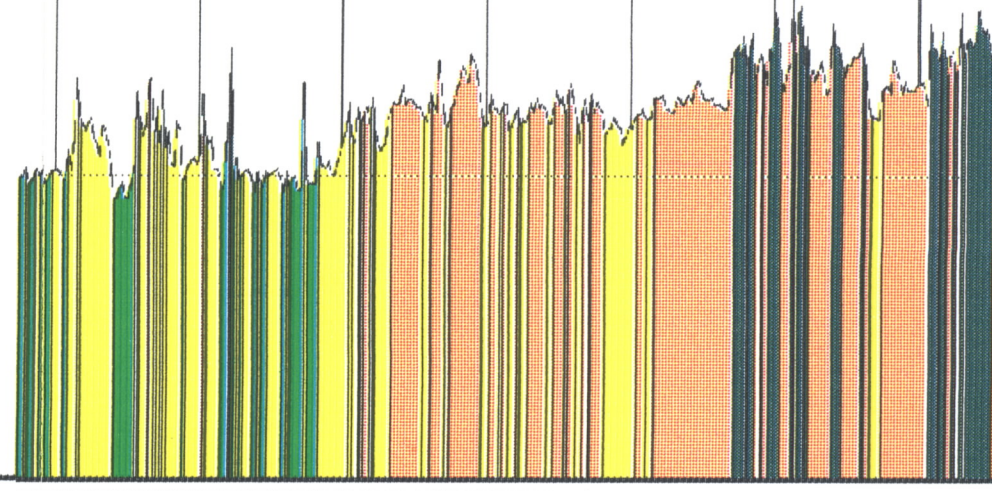
2-Way time from SRD

INTERVAL VELOCITY x 100 m/s.

DT us/ft 240 40
RHOB g/cc 1.7 2.7
GR epi units 0 200
CALI inch 0 20

Depth from SRD METRES 500 1000

400 600 800 1000



Schlumberger

VELOCITY PROFILE