

COMPUTER PROCESSED LOG

Schlumberger

An Advanced Synergetic Log System



SARABAND *

Using the following logs:
DIL NSFL FDC CML BHC

COMPANY: BEACH PETROLEUM N.L.
 WELL: NORTH PAARTEE NO 2
 FIELD: OTWAY BASIN
 COUNTRY: AUSTRALIA
 REFERENCE NO: 230089
 DATE LOGGED: 09 FEB 1981
 LOCATION: LAT: 38° 39' 07"S
 LONG: 142° 58' 19.5"E
 ELEVATION: KB _____ OF 120.2m GL 117m

FOLD HERE: The well name, location and borehole reference data were furnished by the customer.

All interpretations are opinions based on inferences from electrical or other measurements and we cannot, and do not guarantee the accuracy or correctness of any interpretation, and we shall not, except in the case of gross or willful negligence on our part, be liable or responsible for any loss, costs, damages or expenses incurred or sustained by anyone resulting from any interpretation made by any of our officers, agents or employees. These interpretations are also subject to Clause 4 of our General Terms and Conditions as set out in our current Price Schedule.

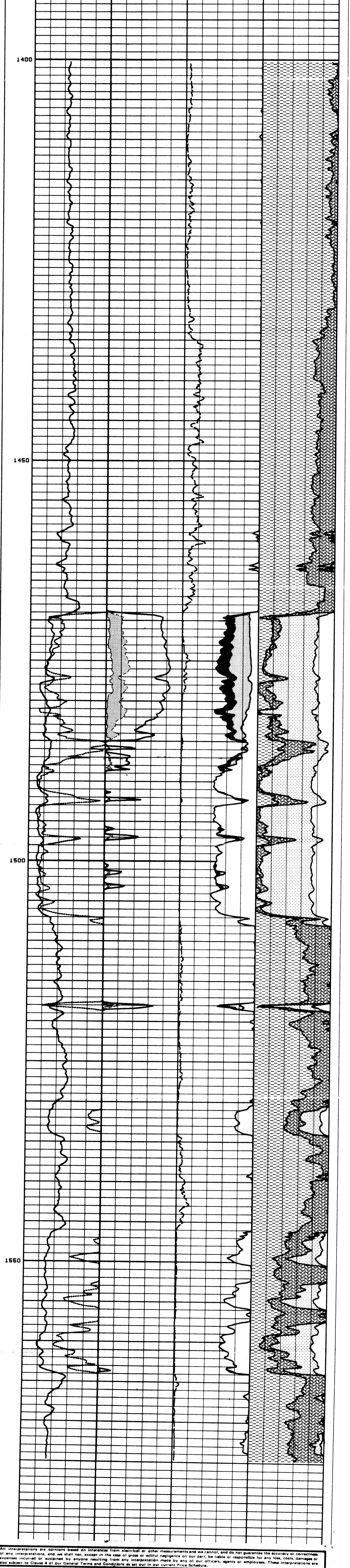
Field Recording	Engineer: RUCHT	Truck No: 3703	Location: QEA	C.C. Job No.
Office Recording	Comp. Center: KLJ	Program No: 0	Analyst: BORLAND	230089
Mud Measurements	R _m = 2.4 @ 125°C	R _{mf} 2.5 @ 25°C	BHT = 55°C	Bit Size 8.5

COMPUTATION PARAMETERS

Depth Interval	From	To	R _w @ 75	PHI max	PHI N-clay	PHI D-clay	PHI N-sho	ρ ma	SSP (CWSP)	ρHY (ROP)	GR Sand	GR Shale		
											MINIDAGI	MAXIDALIM	MINIDAKI	MAXIDASH
1575	1400		.23	30	55	18	28	2.65	-84	.5	30	50	72	108

REMARKS:
a = 1.0
m = 1.7
n = 1.8

DEPTH	FORMATION CHARACTERISTICS	HYDROCARBON ANALYSIS	POROSITY ANALYSIS % OF BULK VOL.		BULK VOL. ANALYSIS % OF BULK VOL.				
			Moved	Water	Clay	Silt	QTZ	PHI	
	Gamma ray	Water Saturation							
	Intrinsic Permeability Index	Hydrocarbon Volume							



All interpretations are opinions based on inferences from electrical or other measurements and we cannot, and do not guarantee the accuracy or correctness of any interpretation, and we shall not, except in the case of gross or willful negligence on our part, be liable or responsible for any loss, costs, damages or expenses incurred or sustained by anyone resulting from any interpretation made by any of our officers, agents or employees. These interpretations are also subject to Clause 4 of our General Terms and Conditions as set out in our current Price Schedule.

COMPANY: BEACH PETROLEUM N.L.
 WELL: NORTH PAARTEE NO 2
 FIELD: OTWAY BASIN
 COUNTRY: AUSTRALIA DATE: 29 JULY 1981

