



ENCLOSURE 6A

GO INTERNATIONAL
WIRELINE SERVICES
MICRO-GUARD LOG
 GO INTERNATIONAL AUSTRALIA PTY. LTD.

FILE NO.

COMPANY BEACH PETROLEUM N.L.

WELL NORTH PAARATTE # 1

FIELD WILDCAT

STATE VICTORIA

LOCATION: 38° 35' 10" SOUTH
142° 57' 15" EAST

SEC TWP RGE 304

Other Services: 1ES / BCS
CDL / CMS
LL
SFT

Permanent Datum GROUND LEVEL Elev. 304
 Log Measured from KELLY BUSHING 11 ft. Above Permanent Datum
 Drilling Measured from KELLY BUSHING

Date 22ND NOV 1979

Run No. ONE

Depth-Driller 5033'

Depth-Logger 5033'

Bottom Logged Interval 4000'

Top Logged Interval 950'

Casing-Driller 1360'

Casing-Logger 1360'

Bit Size 8 1/2"

Type Fluid in Hole SEVERE MUD GEL

Density and Viscosity 9.8 @ 40

pH and Fluid Loss 9.5 @ 6.2 cc

Source of Sample FLOURLINE

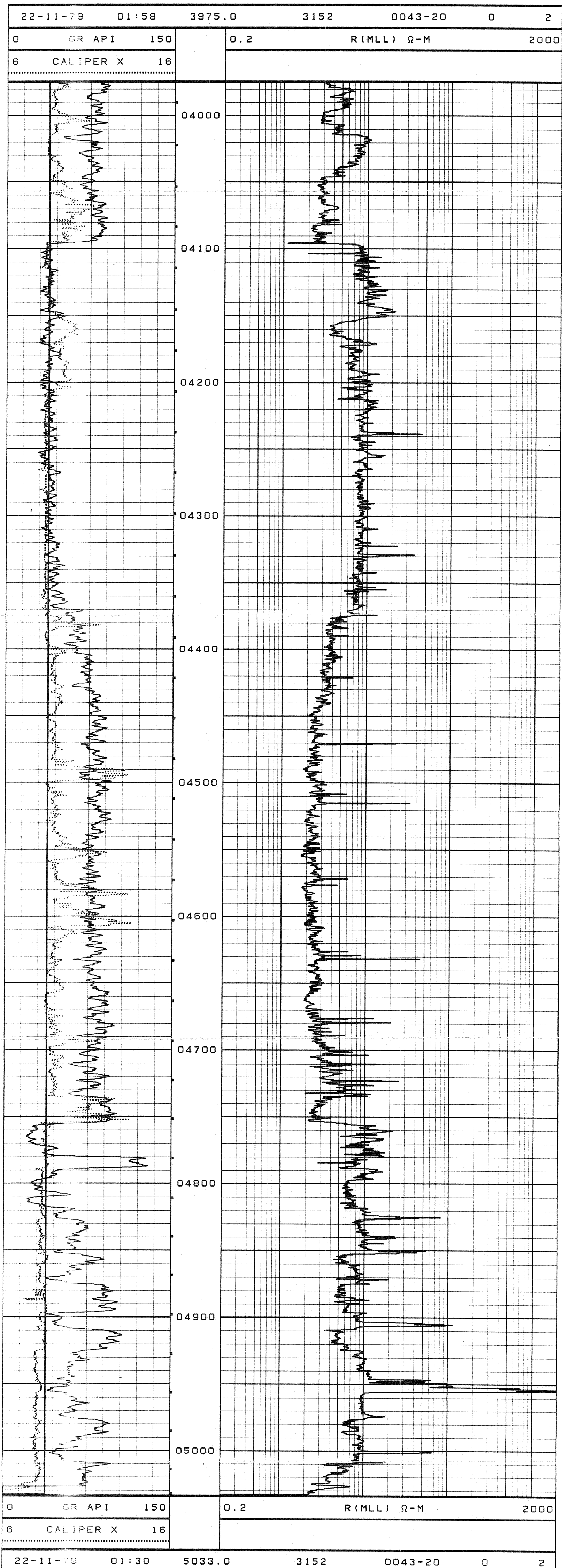
Rm @ Meas. Temp. 2.64 @ 65 °F

Rmf @ Meas. Temp. 1.74 @ 65 °F

Rmc @ Meas. Temp. 2.17 @ 65 °F

Time Since Circ. 9 HOURS
 Max. Rec. Temp. Deg. F. 132
 Equip. No. and location 900-7L BOWA
 Recorded by L. WILDT
 Witnessed by MR. D. HARRISON

Changes in Mud Type or Additional Samples				Scale Changes			
Date	Sample No.	Type Log	Depth	Scale Up Hole	Scale Down Hole		
Type Fluid in Hole							
Dens. Visc.							
pH Fluid Loss							
Source of Sample							
Rm @ Meas. Temp.	@ °F	@ °F	Run No.	Tool Type	Tool Position	S. O.	Tool No.
Rmf @ Meas. Temp.	@ °F	@ °F	ONE	PAD	EXCENT	NONE	3032
Rmc @ Meas. Temp.	@ °F	@ °F					
Equipment Data							
Source Rmf Rmc							
Rm @ BHT	@ °F	@ °F					
Rmf @ BHT	@ °F	@ °F					
Rmc @ BHT	@ °F	@ °F					
Rm From Log Run with Pad Closed: Run 1 1, 2 Run 2 Run 3							
Remarks:							



Company	BEACH PETROLEUM N.L.	GO FR	5032'
Well	NORTH PAARATTE # 1	GO TD	5033'
Field	WILDCAT	DRLR TD	5068'
State	VICTORIA	Elev.	
		KB	315'
		DF	314'
		GL	304'