

Schlumberger

SYDNEY
COMPUTING
CENTRE

VELOCITY PROFILE

Using the following logs:
CALL, RHOB, DT & GR
From W.C.R.

Company: BEACH PETROLEUM NL
03 FEB 1987

Well: NAJABA - 1A
PETROLEUM DIVISION

Field: WILDCAT

Country: AUSTRALIA

Reference No: 560706
Interval: 3412.00 to 170.00

Date Logged: 24/06/86
Date Processed: 10/07/86

Location: 037 54' 13" S
141 03' 50" E

Elevations: KB: 57.7 M DF: 57.4 M GL: 51.7 M

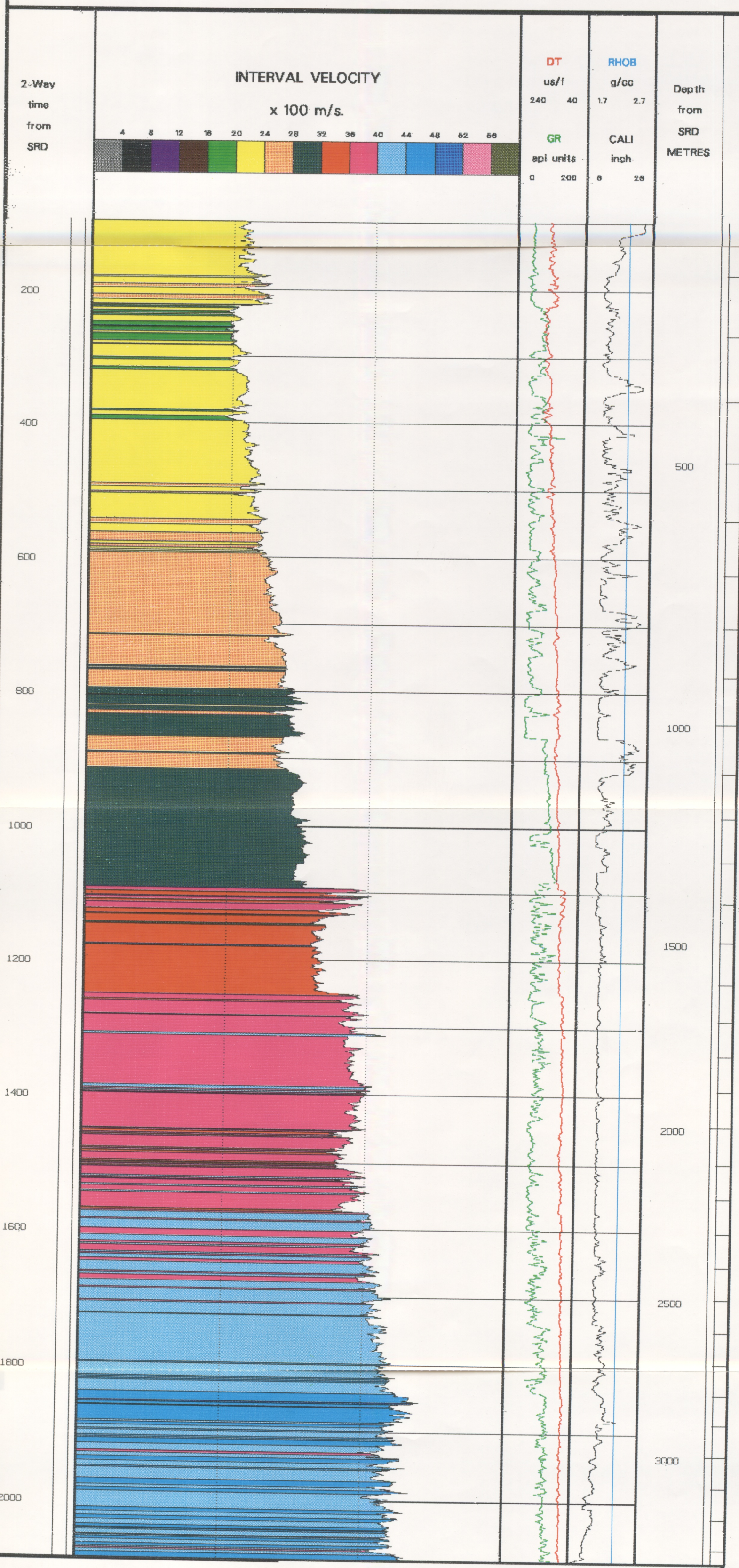
Permanent Datum: MSL
Depth Units: METRES

FOLD HERE The well name, location and borehole reference data were furnished by the customer.

All interpretations are opinions based on inferences from electrical or other measurements and we cannot, and do not guarantee the accuracy or correctness of any interpretations, and we shall not, except in the case of gross or willful negligence on our part, be liable or responsible for any loss, costs, damages or expenses incurred or sustained by anyone resulting from any interpretations made by any of our officers, agents or employees. These interpretations are also subject to Clause 4 of our General Terms and Conditions as set out in our current Price Schedule.

FIELD RECORDING:	Engineer:	A. JAMAL	Location:	VEA	Program Version:	VSP/GEO	
COMPUTATION:	Analyst:	M. SANDERS	Centre:	SYJ	Baseline:	14.2	
MUD MEASUREMENTS:							
R _m	0.023	R _{mf}	0.018	BHT	116	Bit Size	8.5

Remarks: VERTICAL TIME SCALE - 7.5 IN/SEC



Schlumberger

VELOCITY PROFILE